

ADDENDUM NO.1

For

INVITATION FOR BID (IFB)

WINDOW REPLACEMENT

AT THE

COMMUNITY HOUSE

TOWN OF LONGMEADOW

MASSACHUSETTS

May 16, 2011

This document serves as Addendum No.1 for the Invitation for Bid (IFB) for the Town of Longmeadow Window Replacement at the Community House, 735 Longmeadow Street, Longmeadow, MA. This Addendum forms part of the IFB and modifies the original document. Acknowledge the receipt of all addenda numbers issued on the BID SUBMISSION FORM. Failure to do so may subject the bidder to disqualification.

The following changes and/or additions are to be made to the original Invitation for Bid dated April 27, 2011:

1) CHANGE OF BID DEADLINE:

The original bid documents reference the bid deadline as 11:00am on Wednesday, May 18, 2011. Modify all reference to the 'Bid Deadline' throughout the original bid documents, and **revise the bid deadline to, 11:00am on Friday, May 20, 2011.**

2) ACCEPTABLE ALTERNATIVE SUBSTITUTE WINDOW:

The referenced **Attachment A** for Pella Windows is acceptable for the profile and construction however there will still be the requirement that proposed product must meet the material and finish requirement as specified in IFB section 08 25 13 – 'Aluminum Clad Wood Ultimate Insert Double Hung and Roundtop Windows'. The finish requirements must still be as stated in Section 2.5 – 'FINISH' of the bid documents:

- A. Exterior: Fluoropolymer modified acrylic topcoat applied over primer. Meets or exceeds AAMA 2605 requirements.
  - 1. Standard Color: Stone White
- B. Interior: Treated bare mixed grain Douglas Fir.

The window interiors shall be stained and polyurethane finish off site (by manufacturer or contractor) PRIOR to installation. Stain and finish to match the building standard color and finish.

3) MANDATORY PRE-BID CONFERENCE ATTENDANCE LIST:

The list of those that attended and registered at the mandatory pre-bid conference held at 10:00am on Tuesday, May 10, 2011 for the Community House and Town Hall window replacement include the following:

- R.A.C. Builders, Inc., Christopher Herberger
- Garland Construction, Michael Avis
- Action Windows and Siding, Felix Kotovnikov
- R&R Window Contractors, Inc., Don Campbell
- Diversified Construction Services, LLC., Brandon Hall
- Kronenberger & Sons Restorations, Inc., Jay Veillette
- Pella Windows & Doors, Don Schabacker
- Inglewood Development, Chris Burger
- A&A Window, Dan Cabral

- 4) SKETCHES FOR COMMUNITY HOUSE WINDOW INSTALLATION:  
The referenced **ATTACHMENT B** includes sketches for Community House window installation.
- 5) QUESTION AND RESPONSE:

**QUESTION:**

The specifications listed all of the manufacturer options for the muntin bars. What is required?

**RESPONSE:**

Provide Simulated Divided Lites (SDL) for all windows.

**QUESTION:**

The specifications listed all of the manufacturer options for the interior wood species

**RESPONSE:**

Town Hall – The interior wood shall be pine and painted. Windows shall be factory primed.

Windows shall be finish painted off-site prior to installation by window manufacturer or by contractor. On-site finish painting shall be for touch-up work only.

Community House – Provide standard random grained Douglas Fir wood on window interiors.

Windows shall be stained to match the existing woodwork and prefinished off-site by window manufacturer or by contractor. On-site finishing shall be for touch-up work only.

**QUESTION:**

The Marvin ultimate insert double hung units can not be made as a radius unit. They might be able to make them as a fixed casement insert unit. If a single hung unit is used (Magnum series) the frame depth is approx 5 9/16". This would mean that the window opening would have to be modified.

**RESPONSE:**

The roundtop windows on the Town Hall and Community House will not be required to be operable however the exterior appearance of the staggered window sash assembly must be maintained. Contractor shall provide all modifications necessary for complete installation.

**QUESTION:**

Another option for the radius units would be fixed over awning, but that would change the look, (the mull would be wider than a check rail). Cost would be between Magnum Radius unit and a fixed radius casement.

**RESPONSE:**

See response to question 3.

**QUESTION:**

Was the glazing compound tested for asbestos?

**RESPONSE:**

Longmeadow had a consultant test window components for regulated material. The glazing compound was found negative for asbestos.

**QUESTION:**

No construction details were provided. Can some detail be provided?

**RESPONSE:**

Additional details are provided hereto.

**QUESTION:**

Can a lift be used on the exterior?

**RESPONSE:**

Yes. The Contractor shall be required to restore any/all surfaces and materials disturbed or damaged by the use and operation of a lift. Any/all disturbed or damaged surfaces shall be restored to their original condition.

**QUESTION:**

Will substitute window manufactures be entertained?

**RESPONSE:**

The Marvin window types specified establish the standard for acceptance. If a substitution is proposed, a sample (actual mock-up) of the substitution shall be submitted to Longmeadow by Thursday (May 12, 2011) for review. The decision regarding the substitution will be made by agents and consultants of the Town of Longmeadow.

## **ATTACHMENT A**



HUNG

## PRODUCT SELECTION GUIDE

### Size and Performance Data



#### ARCHITECT SERIES\*

#### DESIGNER SERIES\*

#### PELLA® (PROLINE)

Clad LX

Wood LX

Clad SE

Clad

Clad

#### SIZES

Standard Double-Hung vent/fixed sizes	●	●	●	●	●
Transom sizes	●	●	●	●	●
Egress sizes	●	●	●	●	●
Single-Hung	●	●	—	—	—
Simulated-Hung	●	●	—	—	—
Single-Hung—arch head	●	●	—	—	—
Contemporary sash split	—	—	—	●	—
Cottage sash split	●	●	●	●	—
Variable sash split	●	●	—	—	—
Special sizes available	●	●	●	●	●

#### PERFORMANCE

Meets or Exceeds AAMA/WDMA Ratings	H-LC30-LC50 Hallmark Certified	H-LC30-LC45 Hallmark Certified	H-LC30-LC50 Hallmark Certified	H-LC30-LC50 Hallmark Certified	H-R30-R50 Hallmark Certified
Air Infiltration (cfm/ft <sup>2</sup> of frame @ 1.57 psf wind pressure)	0.3	0.3	0.3	0.3	0.3
Water Resistance	4.5-7.5 psf	4.5-6.75 psf	4.5-7.5 psf	4.5-7.5 psf	4.5-7.5 psf
Design Pressure	30-50 psf	30-45 psf	30-50 psf	30-50 psf	30-50 psf
With HurricaneShield® Impact-Resistant Glass	H-LC55-60 Hallmark Certified	H-LC55-60 Hallmark Certified	H-LC55-60 Hallmark Certified	—	—

#### OTHER PERFORMANCE CRITERIA

Forced Entry Resistance Level (Minimum Security Grade) <sub>2</sub>	10	10	10	10	10
Maximum Operating Force (lb) Initiate Motion/Maintain Motion	50/35	50/35	50/35	50/35	45/30

### MONUMENTAL SINGLE-, SIMULATED-, AND DOUBLE-HUNG

#### ARCHITECT SERIES® MONUMENTAL

Clad

Wood

#### SIZES

Special sizes only—Built-to-order in 1/4" increments  
(Includes transoms, egress sizes, arch heads, contemporary sash split, cottage sash split, variable sash split)

●

●

#### PERFORMANCE

Air Infiltration (cfm/ft <sup>2</sup> of frame @ 1.57 psf wind pressure)	0.3	0.3
Water Resistance	4.5 psf	4.5 psf
Design Pressure	30 psf	30 psf
Structural Test Pressure	45 psf	45 psf

(-) = Not Applicable

(1) Maximum performance for single unit when glazed with the appropriate glass thickness.  
See Design Data pages in this section for specific product performance class and grade values.

(2) The higher the level, the greater the product's ability to resist forced entry.



HUNG

PRODUCT SELECTION GUIDE

Features and Options



	ARCHITECT SERIES*		DESIGNER SERIES*	PELLA* (PROLINE)
	Clad	Wood		
<b>GLAZING</b>				
* Advanced Low-E insulating glass with argon	(S)	S	O	O
NaturalSun Low-E insulating glass with argon	O	O	O	O
SunDefense™ Low-E with argon	O	O	O	O
SunDefense Dual Low-E with argon	O	O	-	O
Clear insulating glass	O	O	-	S
Double glazing—exterior single pane of Solar-E™ or clear glass; plus an interior hinged glass panel of Low-E, clear or obscure	-	-	O	-
Triple glazing—exterior dual pane of Low-E insulating glass with argon or clear IG; plus an interior hinged glass panel of Low-E, clear or obscure	-	-	O	-
Non-Impact laminated	-	-	O	-
Low-E with bronze, gray or green tint	O	O	O	-
HurricaneShield® Impact-Resistant glass	O	O	-	-
Obscure glass	O	O	O	O
<b>EXTERIOR</b>				
EnduraClad® aluminum-clad exterior	S	-	S	S
* EnduraClad Plus aluminum-clad exterior	(S)	-	O	-
Primed wood exterior	-	S	-	-
Unfinished mahogany wood exterior	-	O	-	-
<b>Cladding Colors</b>				
White, Tan or Brown	S	-	S	S
* 24 feature colors <sub>1</sub> <b>CLASSIC White</b>	O	-	O	O
Custom colors <sub>2</sub>	O	-	O	-
<b>INTERIOR</b>				
Unfinished wood interior	S	S	S	S
Factory-primed interior	O	O	O	O
* Prefinished White interior <b>Town Hall</b>	O	O	O	O
* Prefinished stain interior <sub>2</sub> <b>Community</b>	O	O	O	O
<b>WOOD TYPES</b>				
* Pine <b>Town Hall</b>	S	S	S	S
Mahogany (Clad and wood LX only)	O	O	-	-
Alder (Clad LX only)	O	-	-	-
* Douglas Fir (Clad LX only) <b>Com. Blk</b>	O	-	-	-

	ARCHITECT SERIES*		DESIGNER SERIES*	PELLA* (PROLINE)
	Clad	Wood		
<b>HARDWARE</b>				
* Sash lifts	(S)	S	S	O <sub>2</sub>
<b>Finishes</b>				
Champagne, White or Brown	S	S	S	S
Bright Brass, Satin Nickel or <b>Oil-Rubbed Bronze</b>	(O)	O	O	O
<b>Sash Locks</b>				
Recessed	-	-	S	-
Surface-mounted	S	S	-	S
Spoon-shaped (surface-mounted)	O	O	-	-
<b>Tilt-Wash Cleaning</b>				
Tilt to interior on both sashes	S	S	S	S
<b>SCREENS</b>				
Full-Size InView® screens	O	O	O	O
* Half-Size InView screens	O	O	O	-
Full-Size Vivid View® screens	O	O	O	O
Half-Size Vivid View screens	O	O	O	-
<b>GRILLES</b>				
<b>Integral Light Technology® Grilles</b>				
* Traditional, Prairie, Diamond, New England, Top Row, <b>as Requested</b> , Victorian, Custom	O	O	-	-
<b>Removable Pine Wood Interior Grilles</b>				
Traditional	O	O	-	O
Prairie, Custom	O	O	-	-
<b>Removable Between-Glass Grilles</b>				
Traditional, Prairie, Top Row, Cross, New England, Custom	-	-	O	-
<b>Grilles-Between-the-Glass</b>				
Traditional, Prairie, Cross, Top Row, Custom-Equally Divided	O	O	-	O
<b>Simulated-Divided-Light<sub>3</sub> Grilles</b>				
Traditional, 9-Lite Prairie, Cross, Top Row, Custom-Equally Divided	-	-	-	O
<b>WINDOW FASHIONS<sub>4</sub></b>				
<b>Cellular Fabric Shades</b>				
Between-glass bottom-up	-	-	O	-
Between-glass top-down	-	-	O	-
<b>Slimshade® Blinds</b>				
Between-glass bottom-up	-	-	O	-
Between-glass tilt-only	-	-	O	-
<b>Between-Glass Decorative Options<sub>1</sub></b>				
Decorative panels	-	-	O	-

S = Standard; O = Optional; (-) = Not Available

(1) See the Clad/Wood Overview section for feature color options. Poplar White, Putty, Hartford Green, Black and Brick Red are the only feature color options available for Pella\* (ProLine).

(2) Contact your local Pella sales representative for current color options.

(3) Available with Low-E argon-insulated glass only.

(4) For detailed information see the Between-the-Glass Options in the Clad/Wood Overview section.



HUNG

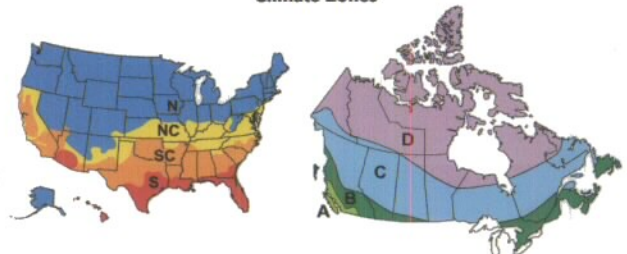
# GLAZING PERFORMANCE - TOTAL UNIT

Architect Series® Clad



Type of Glazing	U-Factor <sub>1</sub>	SHGC	VLT %	CR	Shaded Areas Meet ENERGY STAR® Performance Criteria in Zones Shown									
					U. S.				Canada <sub>2</sub>					
					Zone				ER	Zone				
					N	NC	SC	S		A	B	C	D	
11/16" clear IG with 2.5 mm glass	0.47	0.60	63	43										
with grilles-between-the-glass	0.47	0.54	56	43										
with integral grilles	0.47	0.54	56	43										
11/16" Advanced Low-E IG with argon with 2.5mm glass	0.30	0.28	54	58						17				
with grilles-between-the-glass	0.30	0.26	48	58						16				
with integral grilles	0.30	0.26	48	58						16				
11/16" NaturalSun Low-E IG with argon with 2.5mm glass	0.32	0.54	60	56						29				
with grilles-between-the-glass	0.32	0.49	54	56						27				
with integral grilles	0.32	0.49	54	56						27				
11/16" SunDefense™ Low-E IG with argon with 2.5 mm glass	0.29	0.21	50	58						14				
with grilles-between-the-glass	0.29	0.19	44	58						13				
with integral grilles	0.30	0.19	44	58						12				
11/16" SunDefense™ Dual Low-E IG with argon with 2.5 mm glass	0.26	0.20	46	48						17				
with grilles-between-the-glass	0.26	0.18	41	48						16				
with integral grilles	0.26	0.18	41	48						16				
<b>TINTED GLAZING</b>														
11/16" Bronze Advanced Low-E IG w/ argon with 5 mm/3 mm Low-E	0.30	0.25	34	56						15				
with grilles-between-the-glass	0.32	0.23	31	56										
with integral grilles	0.32	0.23	31	56										
11/16" Gray Advanced Low-E IG w/ argon with 5 mm/3 mm Low-E	0.30	0.23	30	56						14				
with grilles-between-the-glass	0.32	0.21	26	56										
with integral grilles	0.32	0.21	26	56										
11/16" Green Advanced Low-E IG w/ argon with 5 mm/3 mm Low-E	0.30	0.24	42	56						15				
with grilles-between-the-glass	0.32	0.22	37	56										
with integral grilles	0.32	0.22	37	56										
<b>HIGH ALTITUDE GLAZING</b>														
11/16" Advanced Low-E HA IG with 2.5mm glass	0.33	0.29	54	54										
with grilles-between-the-glass	0.33	0.26	48	54										
with integral grilles	0.34	0.26	48	54										
11/16" NaturalSun Low-E HA IG with 2.5mm glass	0.35	0.54	60	53						26				
with grilles-between-the-glass	0.35	0.48	54	53						22				
with integral grilles	0.36	0.48	54	53						21				
11/16" SunDefense™ Low-E HA IG with 2.5 mm glass	0.33	0.21	50	55										
with grilles-between-the-glass	0.33	0.19	44	55										
with integral grilles	0.33	0.19	44	55										
11/16" SunDefense™ Dual Low-E HA IG with 2.5 mm glass	0.28	0.20	46	44						15				
with grilles-between-the-glass	0.28	0.18	41	44						14				
with integral grilles	0.29	0.18	41	44										

Climate Zones



R-Value = 1/U-Factor  
 SHGC = Solar Heat Gain Coefficient  
 VLT % = Visible Light Transmission  
 CR = Condensation Resistance  
 ER = Canadian Energy Rating

(1) Glazing performance values are calculated based on NFRC 100.  
 (2) The values shown are based on Canada's updated ENERGY STAR® 2010 initiative.





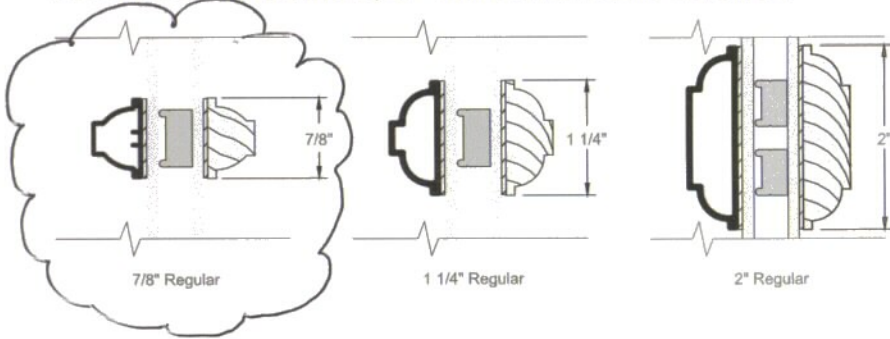
HUNG

**GRILLE TYPES**

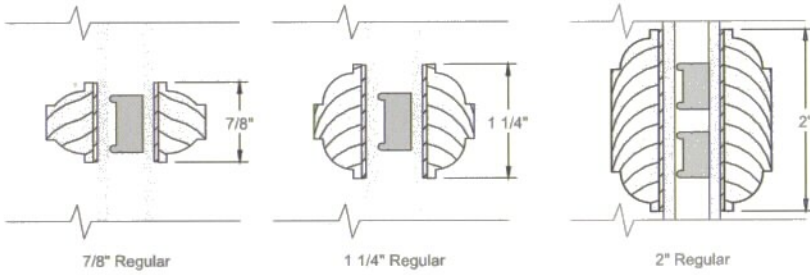
Typical Grille Profiles



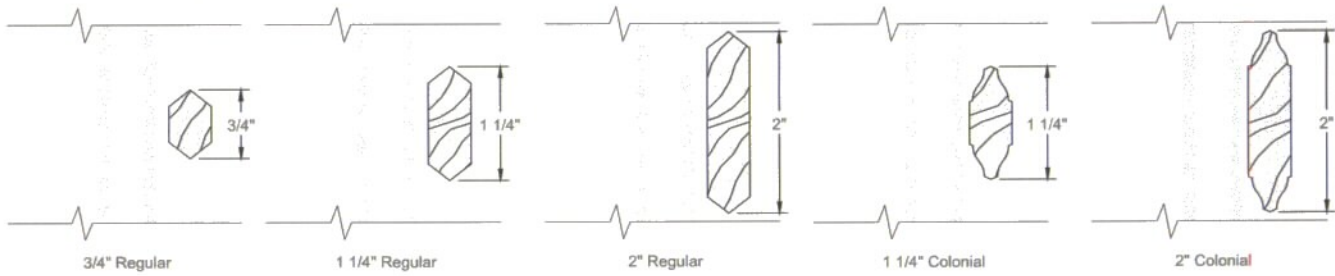
**INTEGRAL LIGHT TECHNOLOGY® GRILLES WITH CLAD EXTERIOR,**



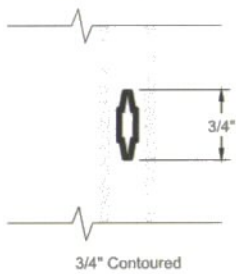
**INTEGRAL LIGHT TECHNOLOGY GRILLES WITH WOOD EXTERIOR<sub>2</sub>**



**REMOVABLE INTERIOR PINE GRILLES**



**3/4" GRILLES-BETWEEN-THE-GLASS**



(1) Available in Pine, Mahogany, Alder or Douglas Fir to match complete unit.

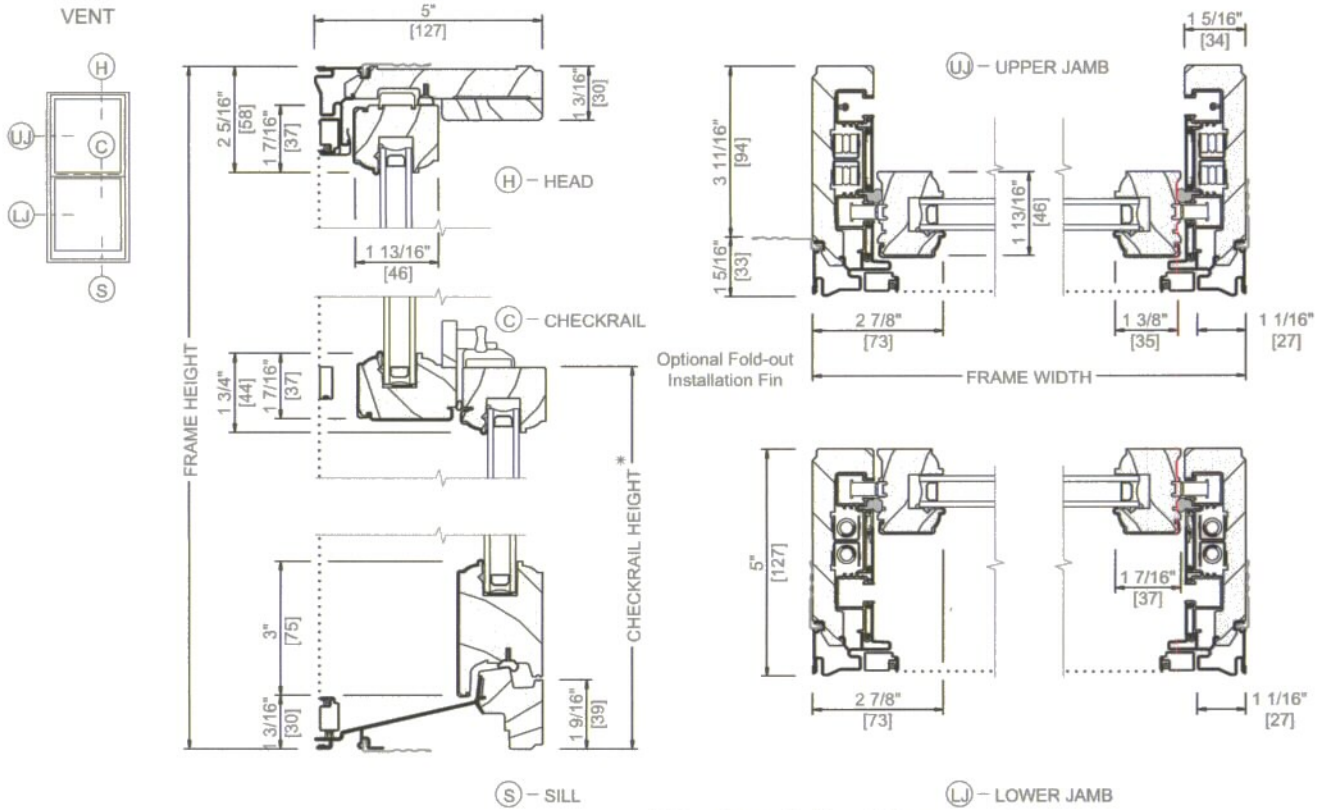
(2) Available in Pine or Mahogany to match complete unit.



HUNG

UNIT SECTIONS

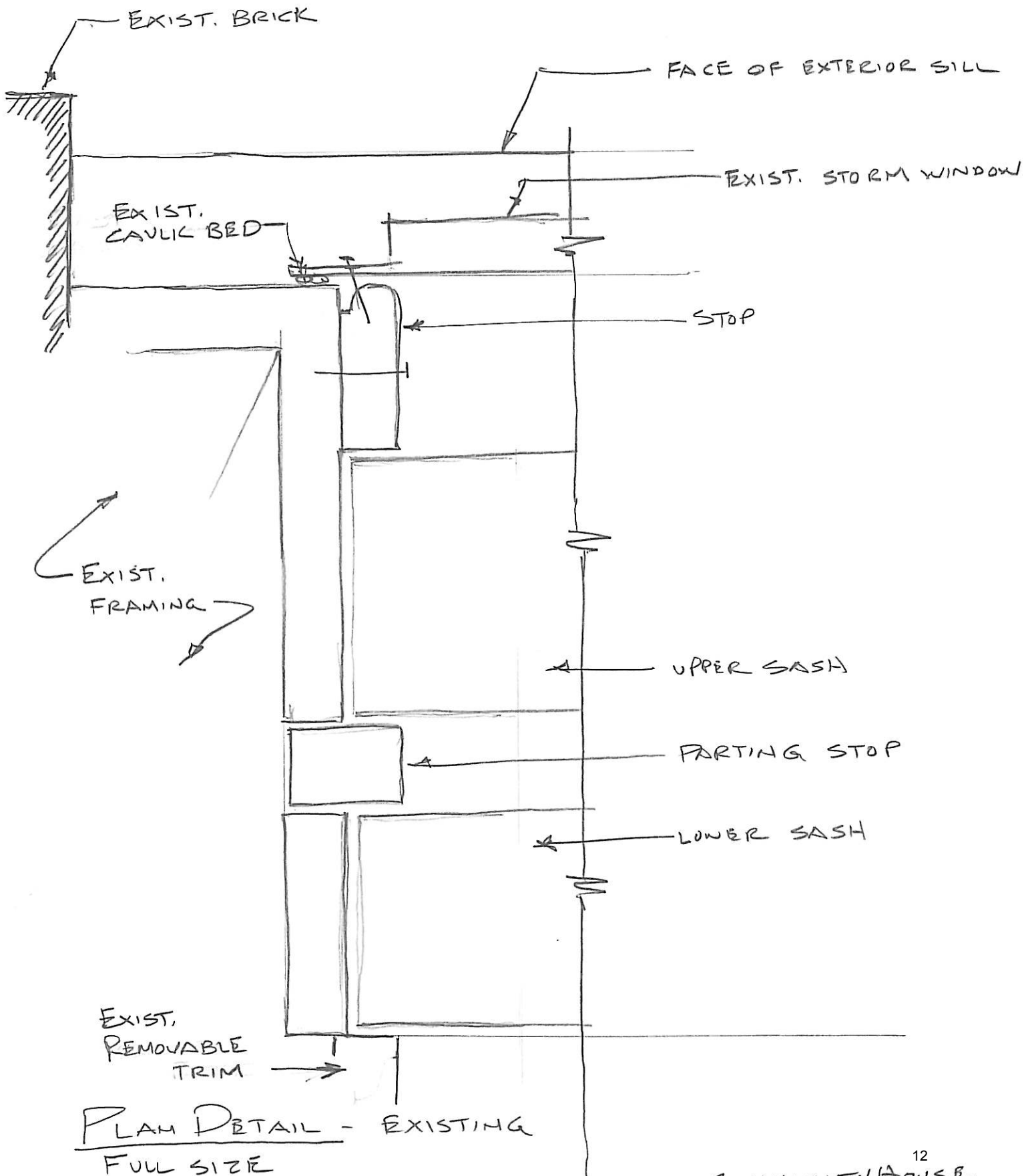
Aluminum-Clad Wood  
LX Single- and Double-Hung

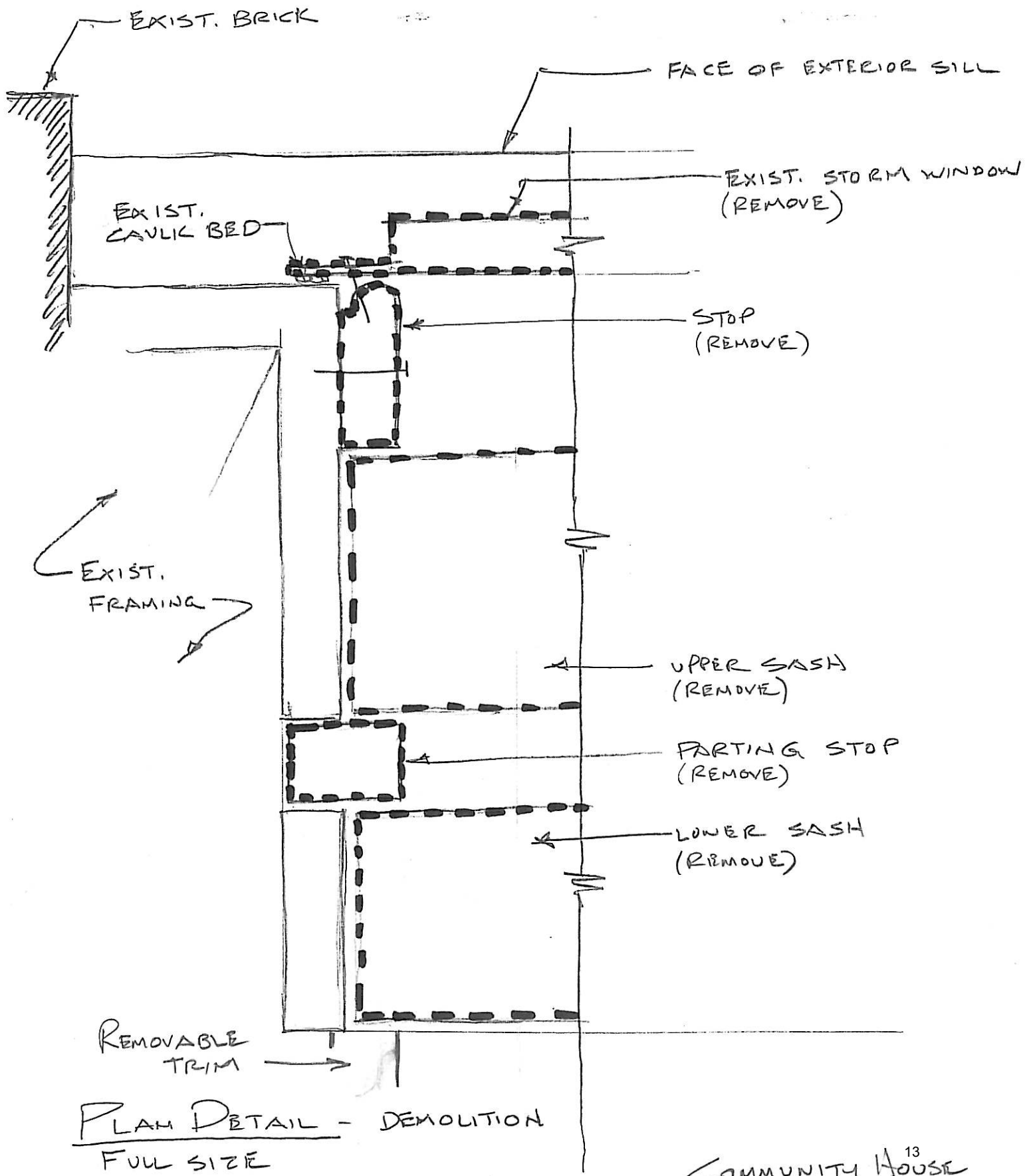


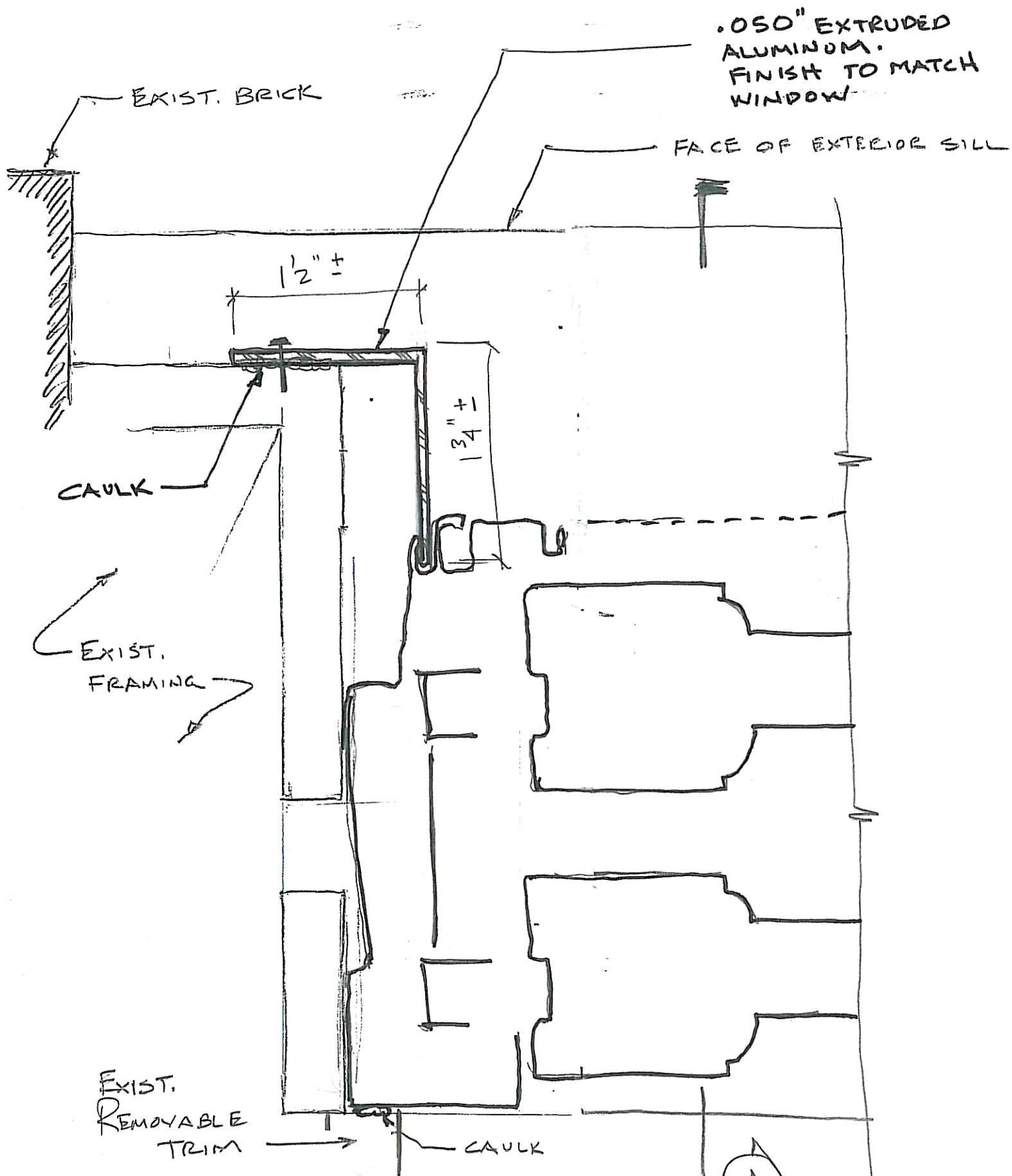
\* Dimension required for ordering units with unequal sash.

Scale 3" = 1' 0"  
All dimensions are approximate.

## **ATTACHMENT B**







.050" EXTRUDED ALUMINUM. FINISH TO MATCH WINDOW

EXIST. BRICK

FACE OF EXTERIOR SILL

1/2" ±

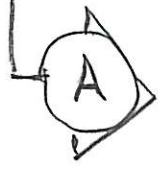
3/4" ±

CAULK

EXIST. FRAMING

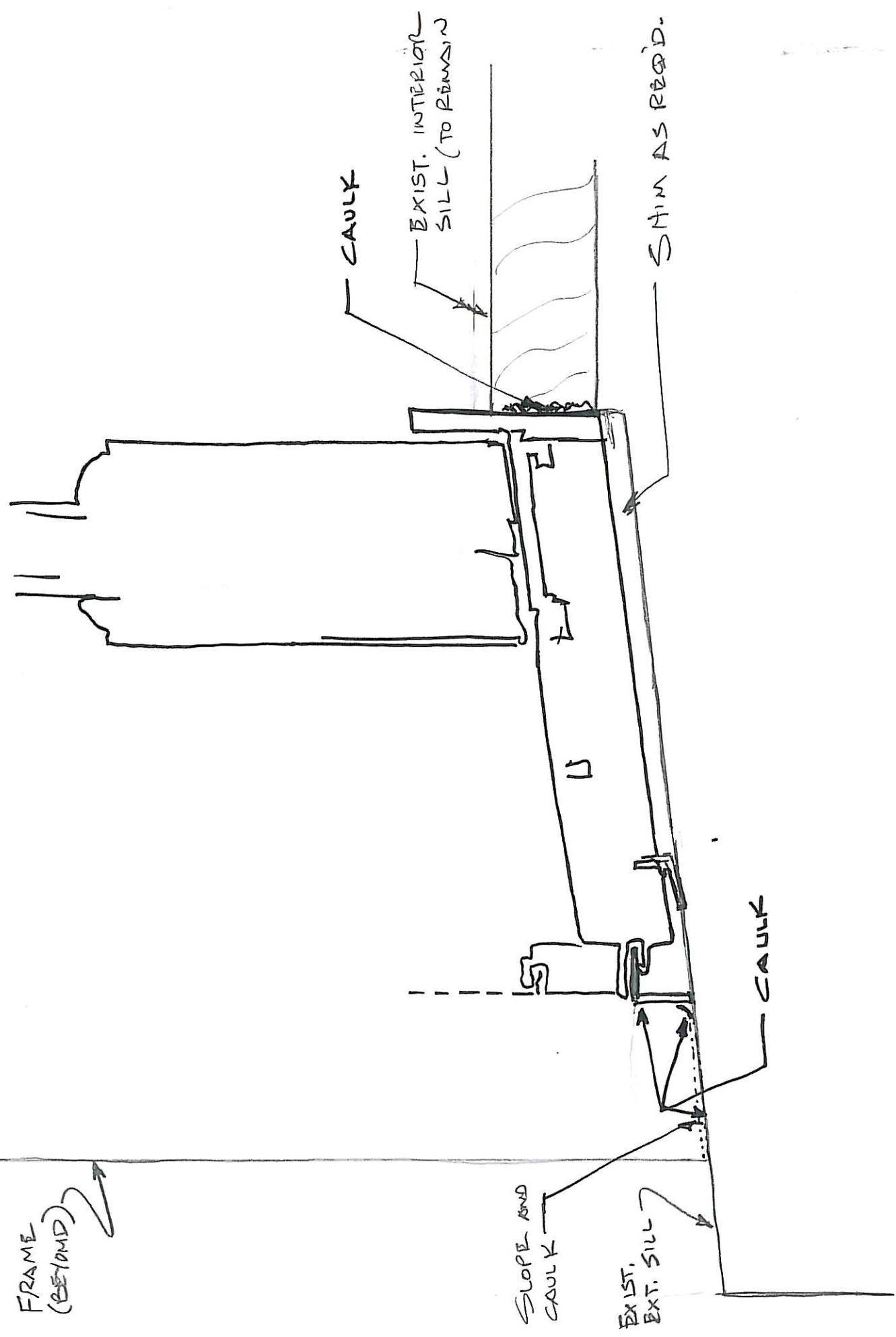
EXIST. REMOVABLE TRIM

CAULK



PLAN DETAIL - NEW WORK  
FULL SIZE

FRAME  
(BEYOND)



SECTION A  
FULL SIZE

COMMUNITY HOUSE