

SHEET KEYNOTES

- CONSTRUCTION DEWATERING WATER TO BE DISCHARGED TO THE GRIT REMOVAL EFFLUENT CHANNEL AT THE NW CORNER OF THE HEADWORKS STRUCTURE. MODIFY GRATING TO ALLOW PIPE TO DISCHARGE INTO CHANNEL AND REPAIR GRATING AT COMPLETION OF DEWATERING PUMPING.
- TUPS BYPASS PIPING (SEE SHEET 050-CY-108) MAY BE ROUTED TO THE GRIT REMOVAL EFFLUENT CHANNEL AT THE NW CORNER OF THE HEADWORKS STRUCTURE RATHER THAN TO AERATION BASINS 1 AND 2 AT THE CONTRACTOR'S OPTION. PIPE MAY BE ROUTED INDIVIDUALLY OR COMBINED INTO A DEWATERING PIPE WITH APPROPRIATE BACKFLOW PROTECTION.

GENERAL NOTES

- SEE 010-G-006 FOR OVERALL EXISTING CONDITIONS SITE PLAN.
- SEE 010-G-007 FOR OVERALL SITE LAYOUT PLAN AND FACILITY KEY.
- ELECTRICAL WORK SHOWN ON THESE DRAWINGS FOR INFORMATION ONLY. SEE ELECTRICAL SITE DRAWINGS 050-E-103 THROUGH 050-E-302 FOR MORE INFORMATION.
- TEMPORARY PIPING AND PUMP STATIONS ARE SHOWN ON THIS AND THE FOLLOWING SHEETS AS DASHED AND IS FOR INFORMATION ONLY. THE CONTRACTOR IS RESPONSIBLE FOR ALL TEMPORARY PIPING PER THE SPECIFICATIONS. TEMPORARY PUMP STATION AND TEMPORARY PIPING MUST BE ROUTED TO ACCOMMODATE EXISTING TRAFFIC FLOWS TO ALL FACILITIES. PRIOR TO CONSTRUCTION, OBTAIN APPROVAL OF LOCATIONS BY OWNER.
- AT ALL PIPE CROSSINGS, SEE PIPE TRENCH CROSSING STANDARD DETAIL (3123-120)

ORIGINAL DOCUMENT SIGNED BY REGISTRANT ON DECEMBER 16, 2014.

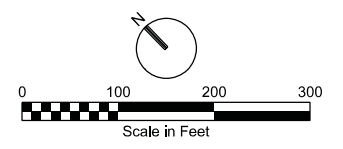
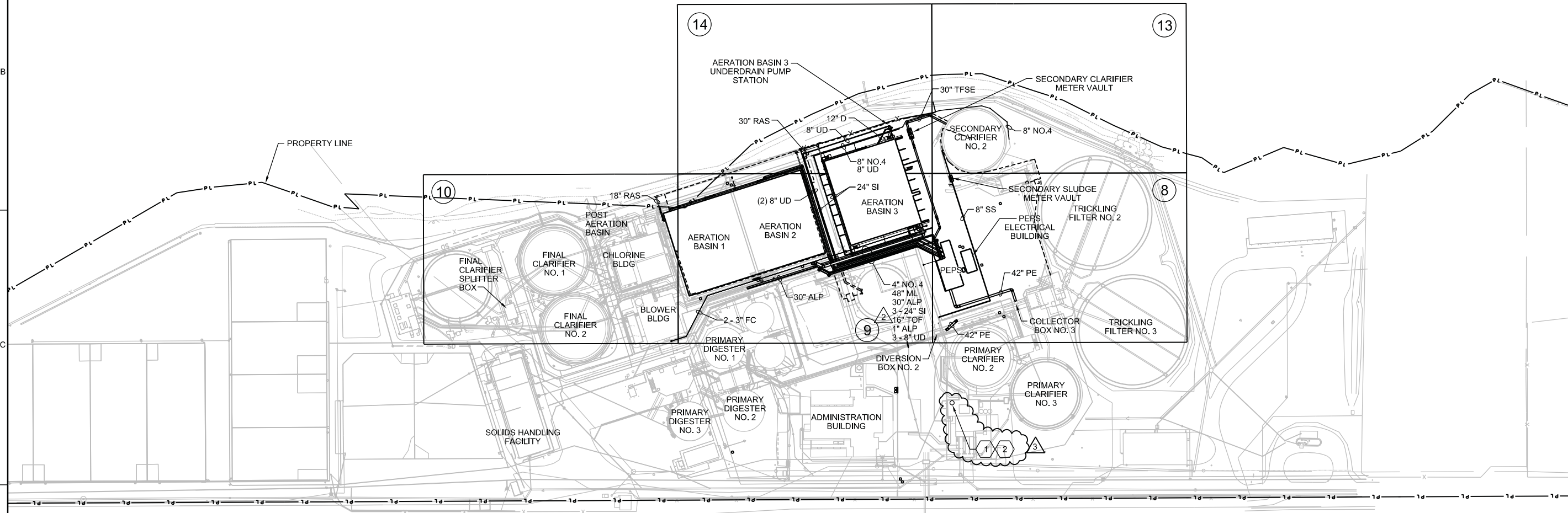
ORIGINAL DOCUMENT STORED AT CH2MHILL/BOISE, ID.

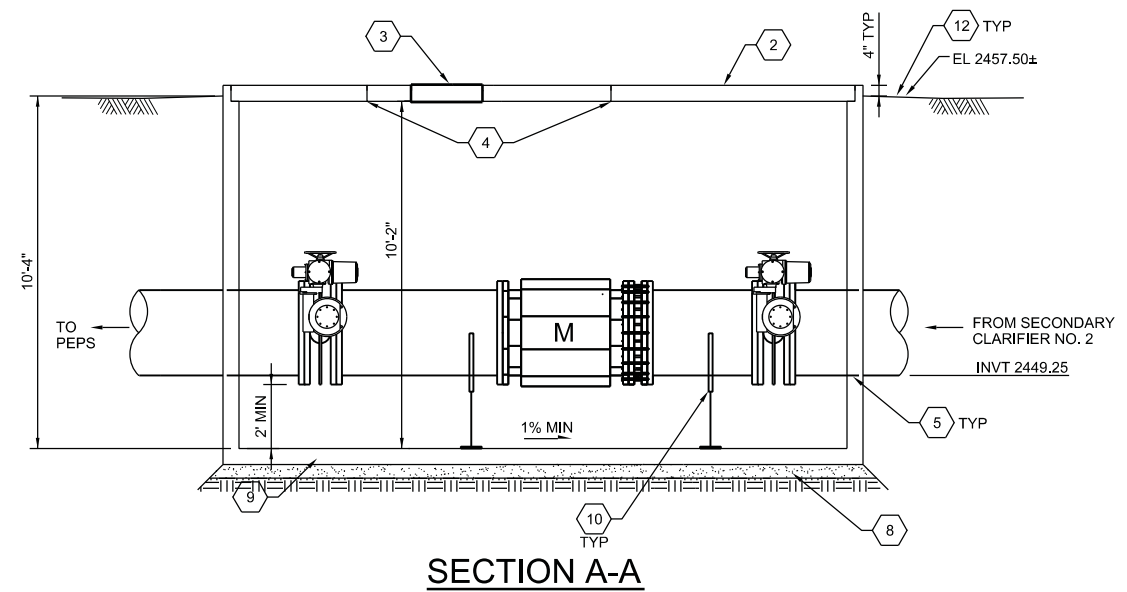
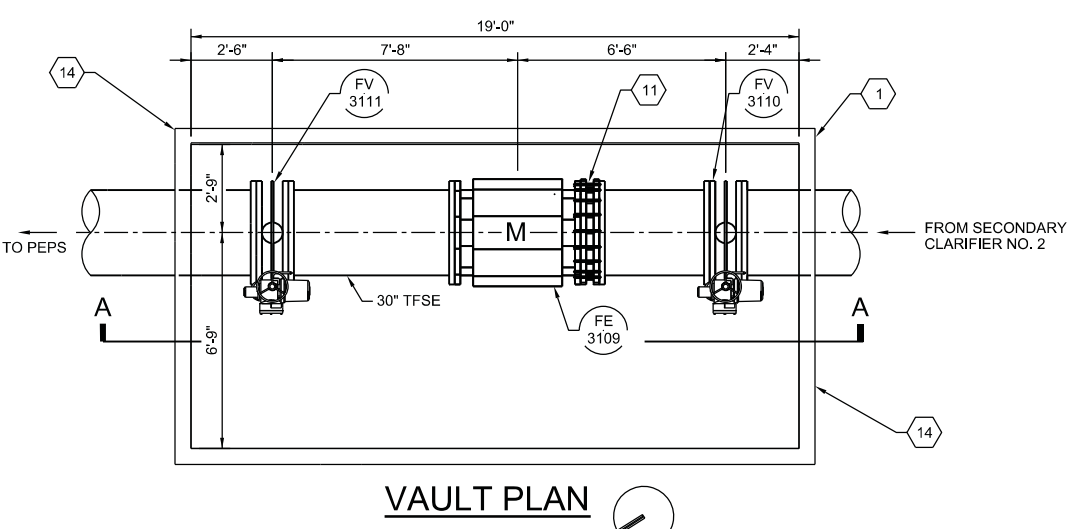
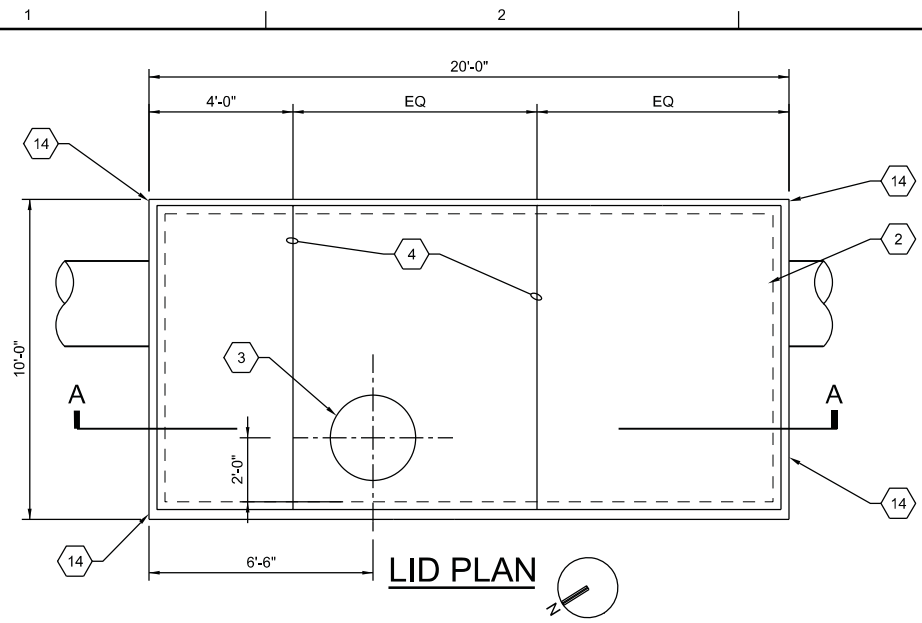
NO.	DATE	REVISION	BY	APVD
3	2015/03/23	ADDENDUM 6	AT	LF
2	2015/03/06	ADDENDUM 4	AT	LF
1	2015/02/13	ADDENDUM 1	AT	LF

NAMPA WWTP PHASE 1 UPGRADES
PROJECT GROUP A
CITY OF NAMPA
NAMPA, IDAHO

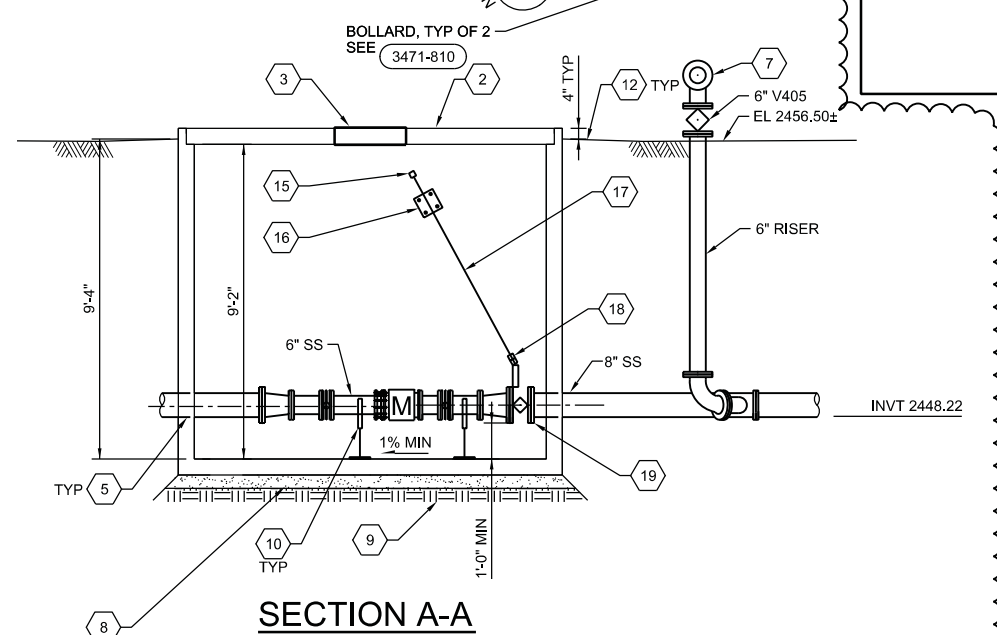
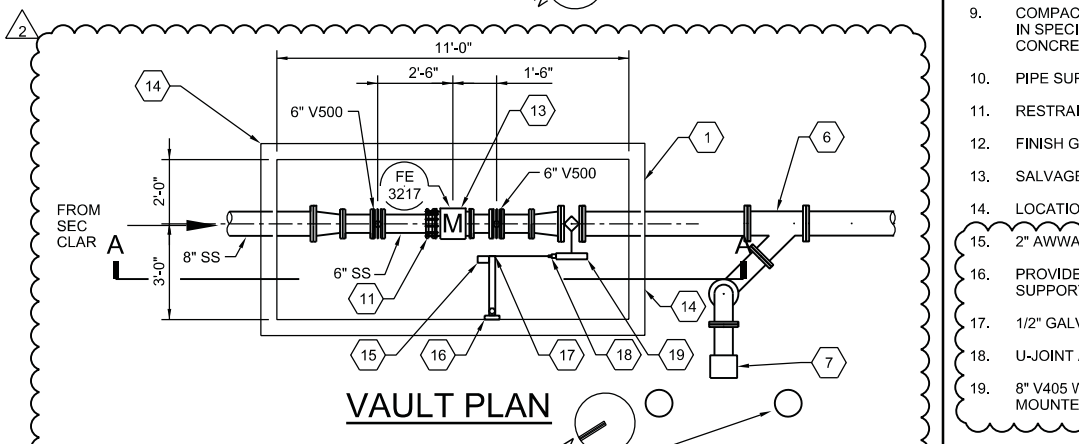
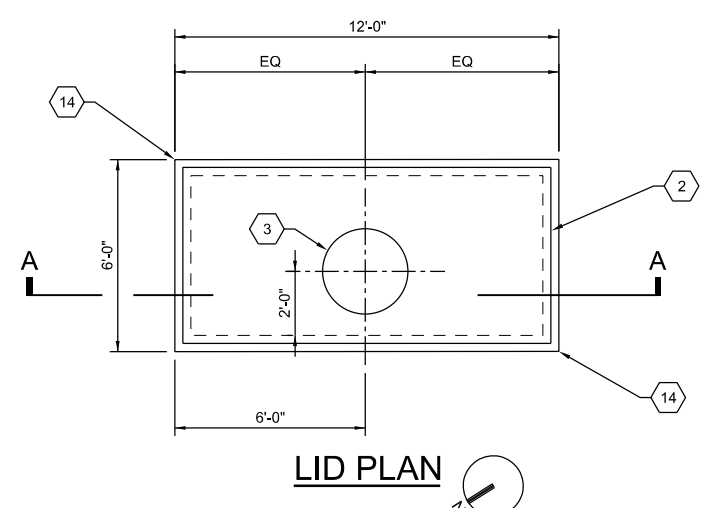
CH2MHILL
CIVIL
OVERALL YARD PIPING PLAN

AS NOTED
VERIFY SCALE
BAR IS ONE INCH ON ORIGINAL DRAWING.
DATE DECEMBER 2014
PROJ 480770
DWG 050-CY-100
SHEET 42 of 157





A SECONDARY CLARIFIER METER VAULT
1"=3'



B SECONDARY SLUDGE METER VAULT
1"=3'

GENERAL NOTES

- A. SEE SITE PLANS AND FACILITY DRAWINGS FOR WORK BEYOND VAULT.
- B. REVIEW VALVE AND ACTUATOR SIZE AND ORIENTATION WITH OWNER AND ENGINEER PRIOR TO CONSTRUCTION.

- SHEET KEYNOTES**
1. PRECAST CONCRETE VAULT, SEE SPECIFICATION SECTION 33 05 26 - PRECAST CONCRETE UTILITY STRUCTURE.
 2. HS-20 TRAFFIC RATED CONCRETE REMOVABLE LID PANELS
 3. 32" DIA TRAFFIC RATED MANHOLE COVER AND FRAME, SIM ISPPWC SD-507
 4. LID PANEL JOINT
 5. WALL PENETRATION, SEE 4027-607
 6. 8X8X6 LATERAL.
 7. 6" CAM STYLE QUICK CONNECT COUPLING TO MATCH OWNER'S HOSE COUPLING.
 8. 6" MIN COMPACTED GRANULAR BEDDING
 9. COMPACTED SUBGRADE, PREPARE AS SPECIFIED IN SPECIFICATION SECTION 33 05 26 - PRECAST CONCRETE UTILITY STRUCTURE.
 10. PIPE SUPPORT, SEE 4005-501
 11. RESTRAINED FLANGED COUPLING ADAPTOR
 12. FINISH GRADE
 13. SALVAGED FLOW METER
 14. LOCATION CONTROL POINT, SEE SHEET C-100.
 15. 2" AWWA NUT ACCESSIBLE FROM MANHOLE.
 16. PROVIDE BRACKET ANCHORED TO WALL TO SUPPORT ROD.
 17. 1/2" GALVANIZED STEEL ROD.
 18. U-JOINT ATTACHED TO GEAR OPERATOR STEM.
 19. 8" V405 WITH GEAR OPERATOR AND VALVE MOUNTED HORIZONTALLY.

ORIGINAL DOCUMENT SIGNED BY REGISTRANT ON DECEMBER 16, 2014.
ORIGINAL DOCUMENT STORED AT CH2MHILL/BOISE, ID.

NO.	DATE	REVISION	BY	APVD
2	20150323	ADDENDUM 6		
1	20150216	ADDENDUM 2		

NAMPA WWTP PHASE 1 UPGRADES
PROJECT GROUP A
CITY OF NAMPA
NAMPA, IDAHO

CH2MHILL
CIVIL

VAULT PLANS, SECTIONS, AND DETAILS

AS NOTED
VERIFY SCALE
BAR IS ONE INCH ON ORIGINAL DRAWING.

DATE	DECEMBER 2014
PROJ	480770
DWG	050-CY-301
SHEET	48 of 157

GENERAL SHEET NOTES

A. SEE DUCT BANK SCHEDULE FOR SITE ELECTRICAL CIRCUIT DETAILS.

SHEET KEYNOTES

1. MEDIUM VOLTAGE UTILITY FEEDER. CONTRACTOR SHALL PROVIDE TRENCH, CONDUIT, AND CONCRETE ENCASEMENT. UTILITY SHALL PROVIDE CONDUCTORS AND TERMINATIONS. COORDINATE WORK WITH UTILITY.
2. FOR WORK IN AERATION BASIN 1, SEE DWGS 421-E-111 AND 421-E-112.
3. FOR WORK IN AERATION BASIN 2, SEE DWGS 422-E-111 AND 422-E-112.
4. FOR WORK IN AERATION BASIN 3, SEE DWGS 423-E-111 AND 423-E-112.
5. ROUTE SMFOC CABLE BY INTERCEPTING EXISTING 2" CONDUIT ON NORTH SIDE OF BUILDING. EXTEND CONDUIT FROM ROOF ENTRANCE TO 2003 NCPSP.
6. PROVIDE 60A DISCONNECT ON A WOOD POST PEDESTAL TO PROVIDE POWER FOR TEMPORARY UTILITY PUMP STATION (TUPS).
7. REMOVE EXISTING SPARE SECONDARY EFFLUENT PUMP STARTER IN MCC 5B. INSTALL NEW 50A CB AND CUBICLE IN EXISTING GE 7700 LINE CONTROL CENTER MCC FOR TUPS.
8. ROUTE CIRCUIT TO MCC-5B. USE EXISTING 2" CONDUIT FOR ROUTING TO ELECTRICAL ROOM.
9. INSTALL 2003NCPSP ABOVE DOOR IN ELECTRICAL ROOM.
10. PROVIDE FIBER OPTIC CIRCUIT TO BLOWER BUILDING. FOR CONTINUATION SEE DWG 435-E-111.
11. INTERRUPT EXISTING CIRCUITS TO SECONDARY CLARIFIER NO. 2, TFEPS, AND SITE LIGHTING, AND EXTEND TO HH-15P AND EXISTING HH-E AS SHOWN. SEE KEY NOTE 4 ON DWG 050-D-113 AND KEYNOTE 21 ON DWG 050-D-108.
12. INTERRUPT EXISTING CIRCUITS TO PRIMARY CLARIFIER NO. 1 AND TO DEWATERING RECEPTACLES THAT WILL BE DISRUPTED BY DEMOLISHING HH-C. RECONNECT TO LOADS AT JUNCTION BOX. PROVIDE NEW CONDUCTORS FROM HH-B TO JUNCTION BOX. PROVIDE WATERPROOF SPLICE IN HH-B.
13. ASSUME THE FOLLOWING CIRCUITS:
 [1"C-3#10,1#10G], [1"C-3#10,1#10G], [1"C-10#12,1#12G].

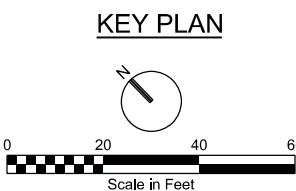
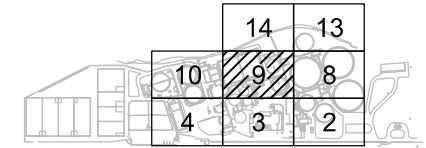
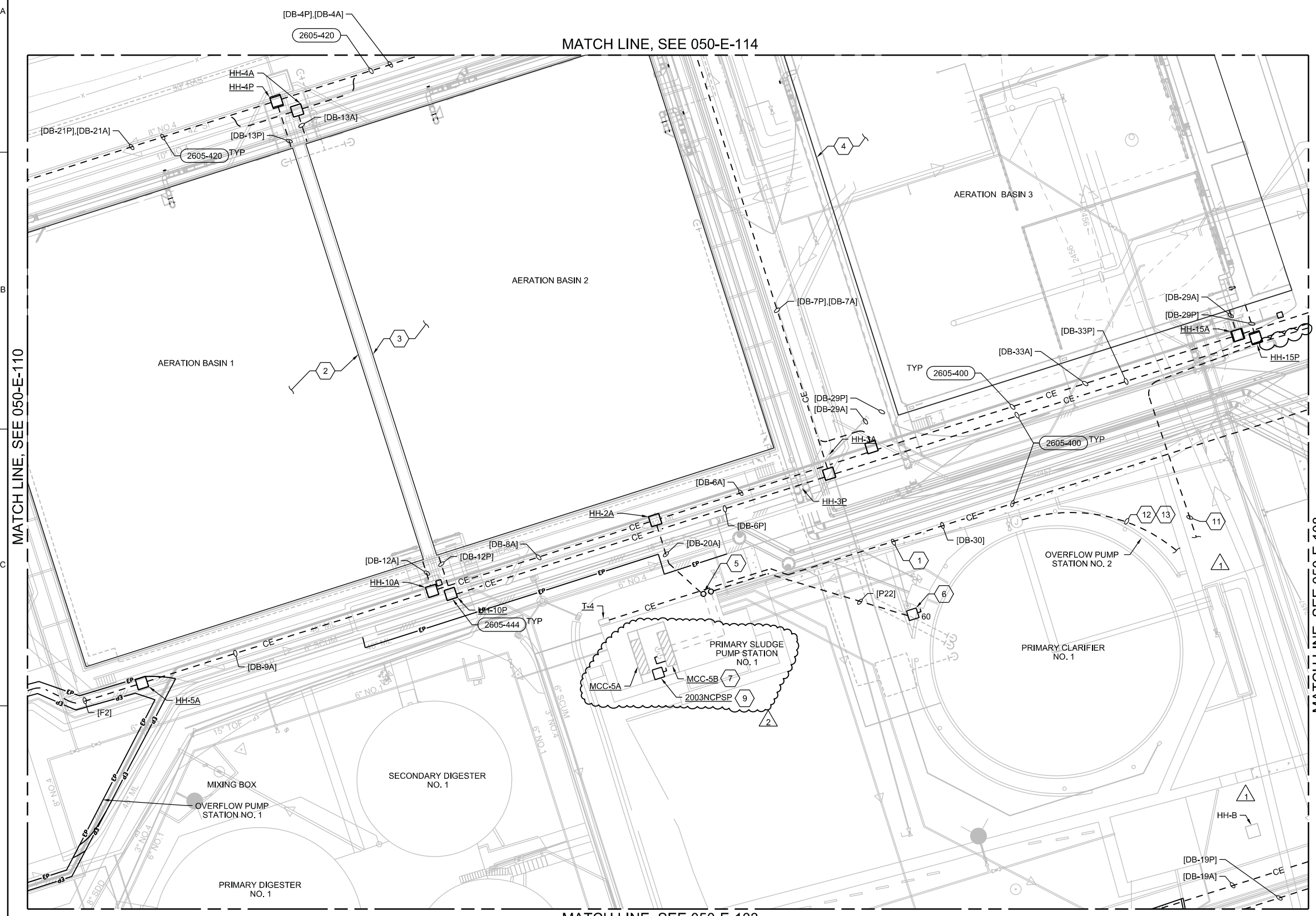


ORIGINAL DOCUMENT STORED AT CH2MHILL/BOISE, ID.

NO.	DATE	REVISION	BY	APVD
2	2015/03/23	ADDENDUM 6		
1	2015/03/03	ADDENDUM 4		

NO.	DATE	REVISION	BY	APVD
2	2015/03/23	ADDENDUM 6		
1	2015/03/03	ADDENDUM 4		

NAMPA WWTP PHASE 1 UPGRADES	
PROJECT GROUP A	
CITY OF NAMPA	
NAMPA, IDAHO	
AS NOTED	
VERIFY SCALE	
BAR IS ONE INCH ON ORIGINAL DRAWING.	
DATE	DECEMBER 2014
PROJ	480770
DWG	050-E-109
SHEET	55 of 157



MATCH LINE, SEE 050-E-110

MATCH LINE, SEE 050-E-108

MATCH LINE, SEE 050-E-114

MATCH LINE, SEE 050-E-103

1 2 3 4 5 6

GENERAL SHEET NOTES

- NOTES:
- COORDINATE MIXER LOCATION WITH MIXER'S MANUFACTURER. FOR AERATION BASIN MIXER INSTALLATION, SEE 1 TYP OF 3.
 - PROVIDE AND INSTALL WALL MOUNTED 33"x33"x5.5" FIBERGLASS LIFE RING CABINET, SAFETY YELLOW, NON-LOCKING T-HANDLE WITH 30" LIFE RING AND 90' ROPE WITH FLOAT AS MANUFACTURED BY CHEYENNE MANUFACTURING INC.
 - DISTRIBUTION HEADERS ARE SHOWN FOR ILLUSTRATION PURPOSES ONLY. COORDINATE FINAL LOCATION AND DIMENSIONS WITH FINE BUBBLE AIR DIFFUSER SYSTEM MANUFACTURER.
 - DRILL 1" HOLE AT LOW POINT AT THE BOTTOM OF THE 16" SI.
 - CONNECT TFSE BYPASS PIPING TO THE 16" SI WALL PENETRATION.
 - REMOVE EXISTING SUMP PUMP, BASE ELBOW, PIPE & RAILS AND SALVAGE TO CITY. INSTALL NEW SYSTEM AS SHOWN.

ORIGINAL DOCUMENT SIGNED BY REGISTRANT ON DECEMBER 16, 2014.

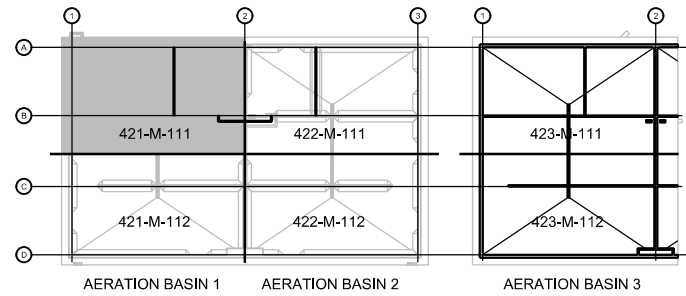
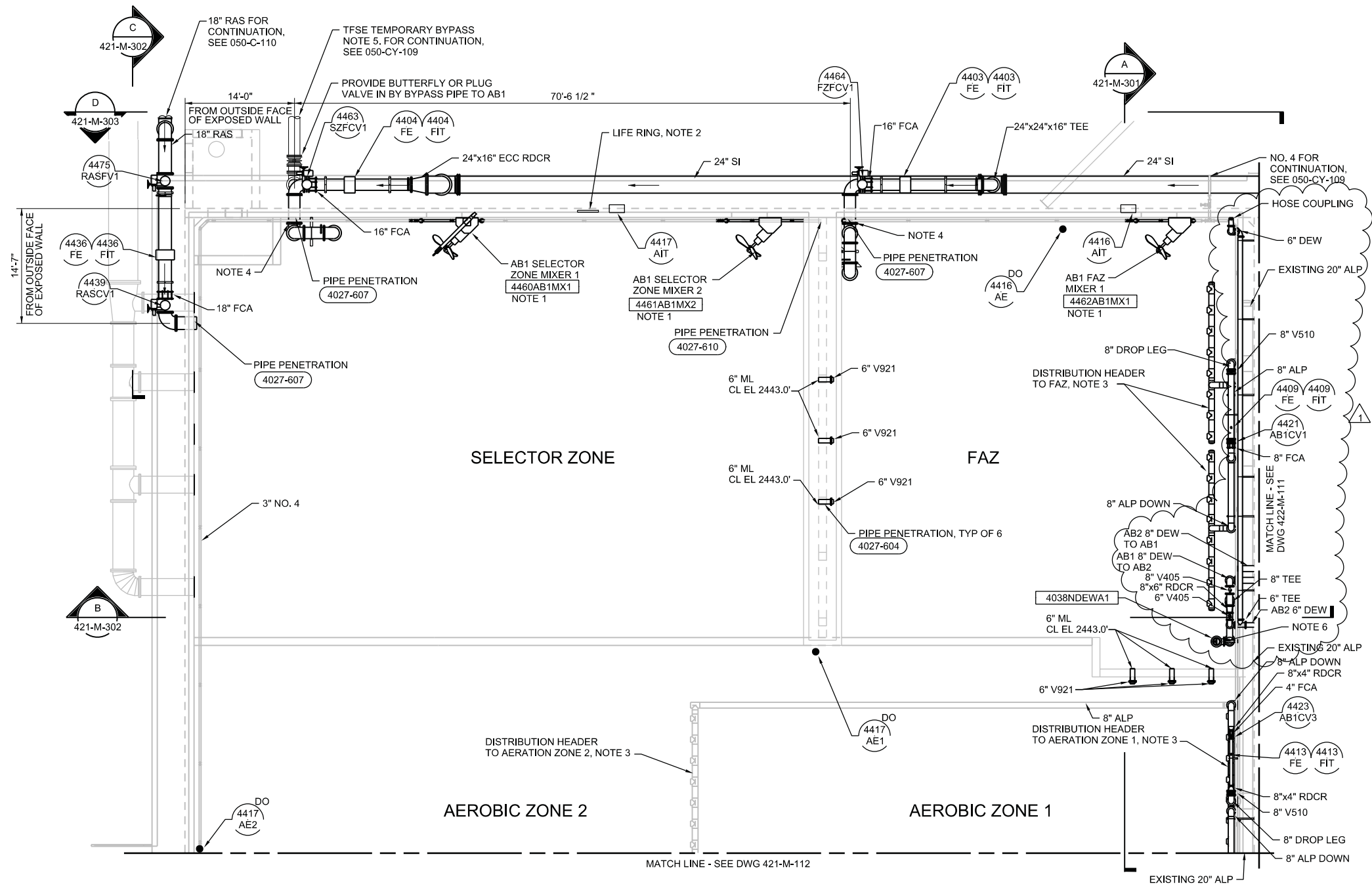


ORIGINAL DOCUMENT STORED AT CH2MHILL/BOISE, ID.

NO.	DATE	DSGN	CHK	REVISION	BY	APVD
1	2015/03/23	ADDENDUM 6	JAP			

NAMPA WWTP PHASE 1 UPGRADES
PROJECT GROUP A
CITY OF NAMPA
NAMPA, IDAHO

AS NOTED	
VERIFY SCALE	
BAR IS ONE INCH ON ORIGINAL DRAWING.	
DATE	DECEMBER 2014
PROJ	480770
DWG	421-M-111
SHEET	111 of 157



AERATION BASIN 1 NORTH PLAN
1/8"=1'-0"



KEY PLAN
NTS

REUSE OF DOCUMENTS: THIS DOCUMENT, AND THE IDEAS AND DESIGNS INCORPORATED HEREIN, AS AN INSTRUMENT OF PROFESSIONAL SERVICE, IS THE PROPERTY OF CH2M HILL AND IS NOT TO BE USED, IN WHOLE OR IN PART, FOR ANY OTHER PROJECT WITHOUT THE WRITTEN AUTHORIZATION OF CH2M HILL. © CH2M HILL 2013. ALL RIGHTS RESERVED.

NO.	DATE	DR	CHK	REVISION	BY	APVD
1	2015/03/26	ADDENDUM 6	JAP			

APVD: G THOMPSON
CHK: J PIGMAN
DR: A ARANGO

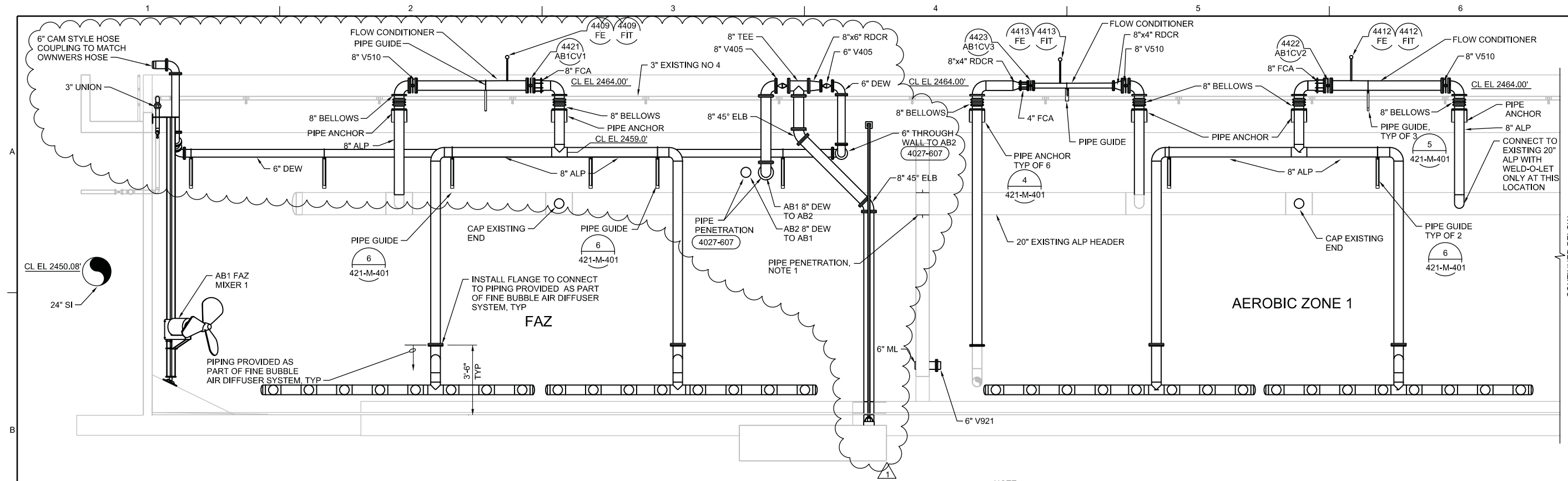
NAMPA WWTP PHASE 1 UPGRADES
PROJECT GROUP A
CITY OF NAMPA
NAMPA, IDAHO

CH2MHILL
PROCESS MECHANICAL
AERATION BASIN 1 SECTIONS

AS NOTED
VERIFY SCALE
BAR IS ONE INCH ON ORIGINAL DRAWING.
0 1"

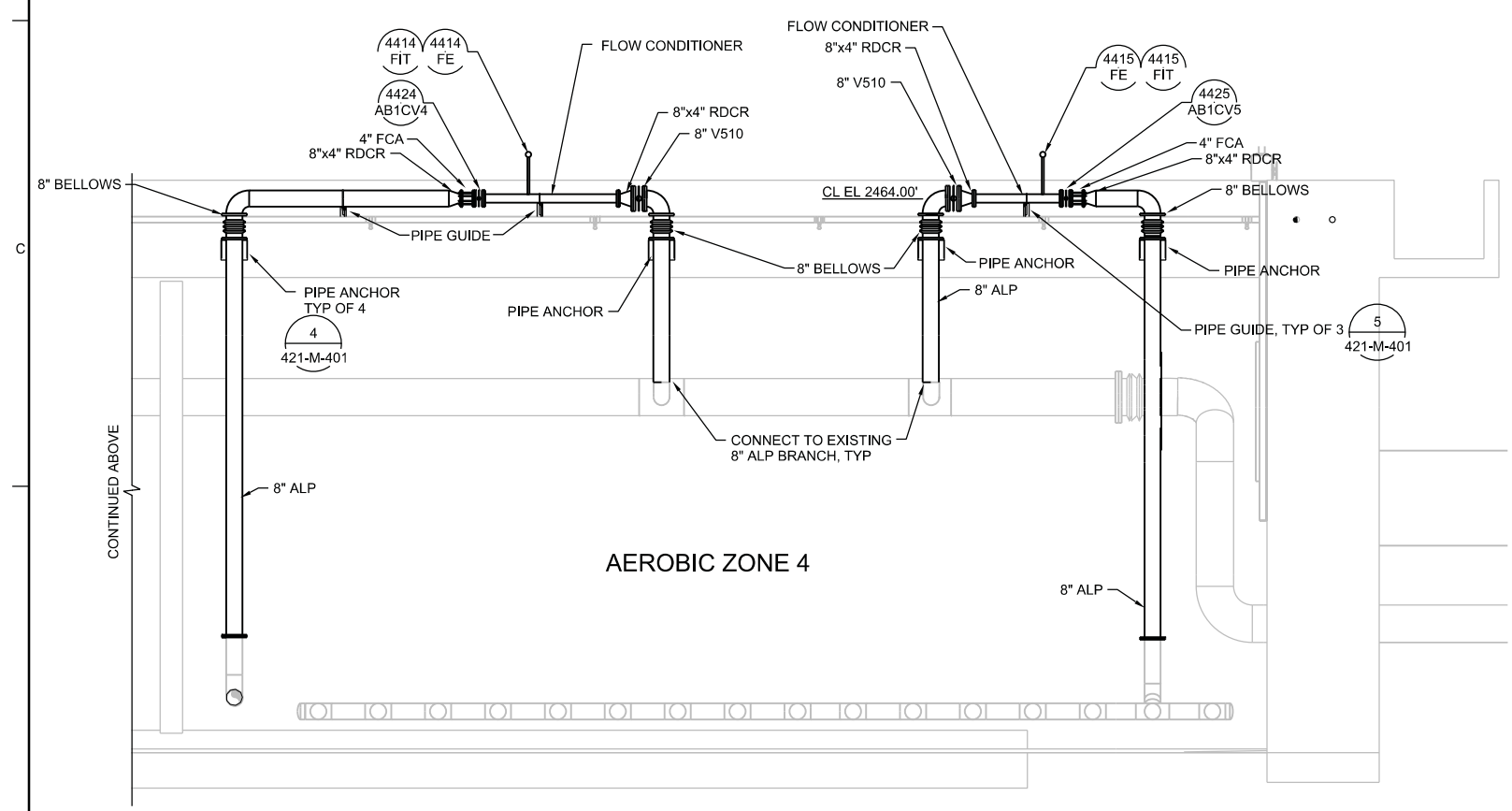
DATE	DECEMBER 2014
PROJ	480770
DWG	421-M-301
SHEET	113 of 157

BID DOCUMENTS

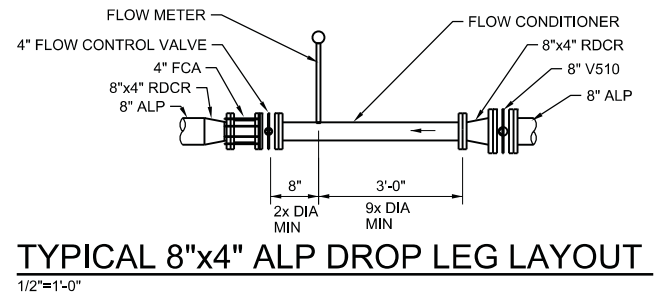


A SECTION
1/4"=1'-0"
421-M-111
421-M-112

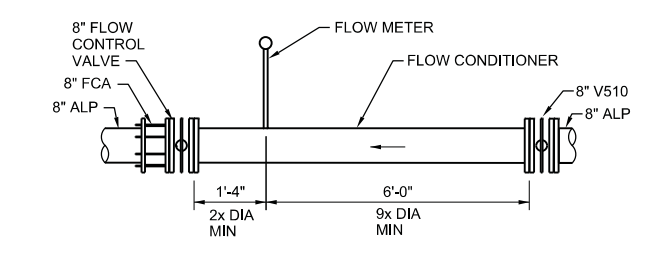
NOTE:
1. SLEEVE PIPE SIMILAR TO DETAIL 4027-604 EXCEPT SPLIT SLEEVE AND WELD AROUND PIPE AND DO NOT USE SEALANT.



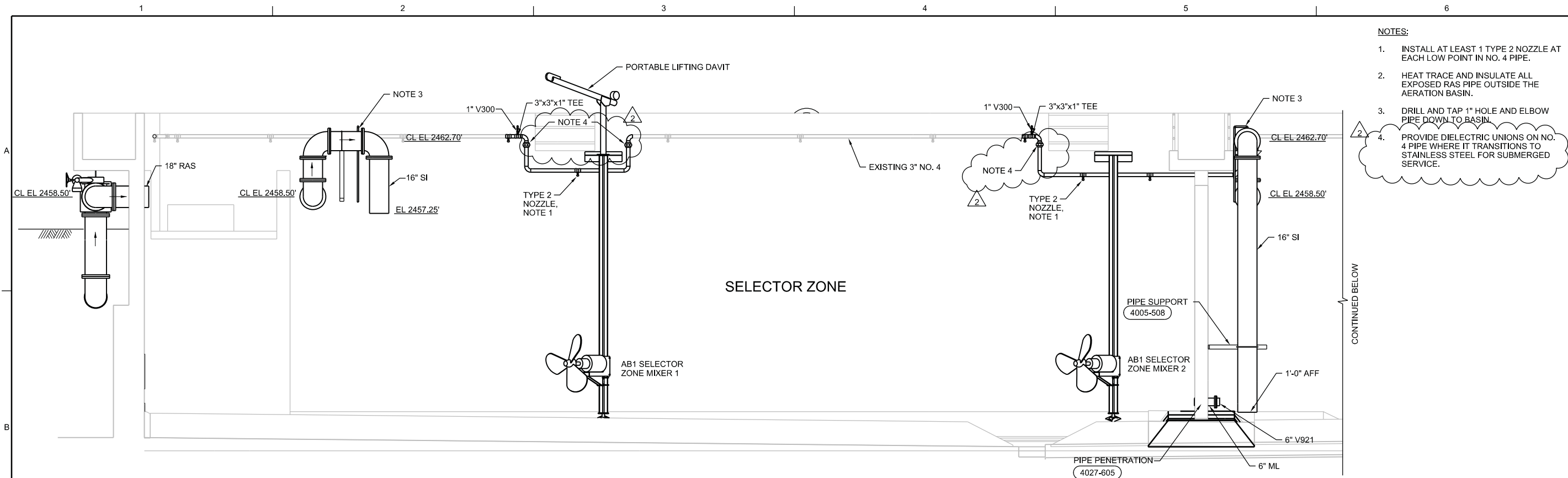
A SECTION
1/4"=1'-0"
421-M-111
421-M-112



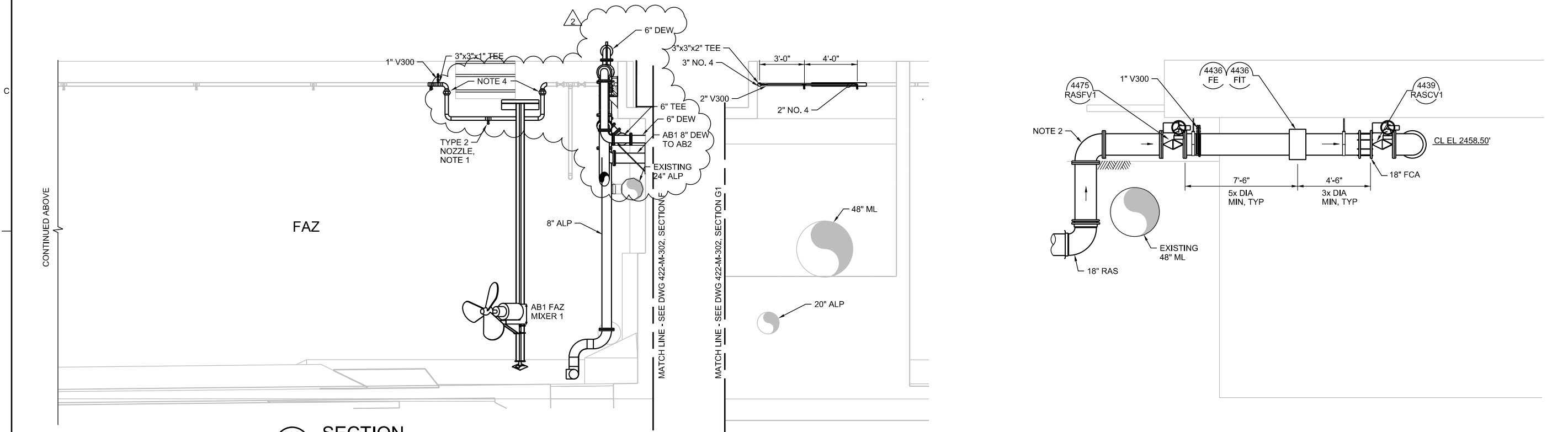
TYPICAL 8"x4" ALP DROP LEG LAYOUT
1/2"=1'-0"



TYPICAL 8" ALP DROP LEG LAYOUT
1/2"=1'-0"



B SECTION
1/4"=1'-0"
421-M-111



B SECTION
1/4"=1'-0"
421-M-111

B1 SECTION
1/4"=1'-0"
421-M-112

C SECTION
1/4"=1'-0"
421-M-111

- NOTES:**
- INSTALL AT LEAST 1 TYPE 2 NOZZLE AT EACH LOW POINT IN NO. 4 PIPE.
 - HEAT TRACE AND INSULATE ALL EXPOSED RAS PIPE OUTSIDE THE AERATION BASIN.
 - DRILL AND TAP 1" HOLE AND ELBOW PIPE DOWN TO BASIN.
 - PROVIDE DIELECTRIC UNIONS ON NO. 4 PIPE WHERE IT TRANSITIONS TO STAINLESS STEEL FOR SUBMERGED SERVICE.

ORIGINAL DOCUMENT SIGNED BY REGISTRANT ON DECEMBER 16, 2014.

PROFESSIONAL ENGINEER REGISTERED STATE OF IDAHO 3755 LAWRENCE M. FEITKETHER

ORIGINAL DOCUMENT STORED AT CH2MHILL/BOISE, ID.

NO.	DATE	REVISION	BY	APVD
2	2015/03/26	ADDENDUM 6	JAP	L.FEITKETHER
1	2015/02/13	ADDENDUM 1	JAP	L.FEITKETHER

NAMPA WWTP PHASE 1 UPGRADES
PROJECT GROUP A
CITY OF NAMPA
NAMPA, IDAHO

CH2MHILL	
PROCESS MECHANICAL	AERATION BASIN 1 SECTIONS
AS NOTED	VERIFY SCALE
BAR IS ONE INCH ON ORIGINAL DRAWING.	
DATE	DECEMBER 2014
PROJ	480770
DWG	421-M-302
SHEET	114 of 157

GENERAL SHEET NOTES

NOTES:

- COORDINATE MIXER LOCATION WITH MIXER'S MANUFACTURER. FOR AERATION BASIN MIXER INSTALLATION, SEE 421-M-401 TYP OF 3.
- PROVIDE AND INSTALL WALL MOUNTED 33"x33"x5.5" FIBERGLASS LIFE RING CABINET, SAFETY YELLOW, NON-LOCKING T-HANDLE WITH 30" LIFE RING AND 90° ROPE WITH FLOAT AS MANUFACTURED BY CHEYENNE MANUFACTURING INC.
- DISTRIBUTION HEADERS ARE SHOWN FOR ILLUSTRATION PURPOSES ONLY. COORDINATE FINAL LOCATION AND DIMENSIONS WITH FINE BUBBLE AIR DIFFUSER SYSTEM MANUFACTURER.
- DRILL 1" HOLE AT LOW POINT AT THE BOTTOM OF THE 16" SI.
- PROVIDE AND INSTALL 6" FEMALE CAMLOCK AT THE TOP OF 6" BD PIPE.
- REMOVE EXISTING SUMP PUMP, BASE ELBOW, PIPE & RAILS AND SALVAGE TO CITY. INSTALL NEW SYSTEM AS SHOWN.

ORIGINAL DOCUMENT SIGNED BY REGISTRANT ON DECEMBER 16, 2014.

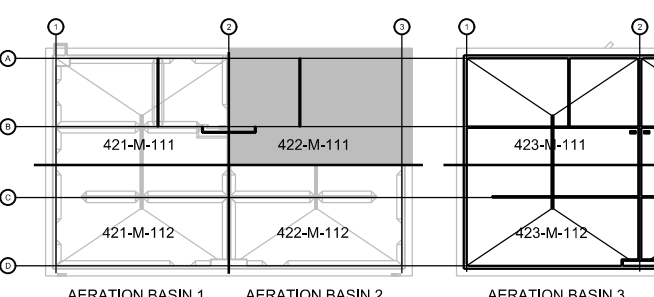
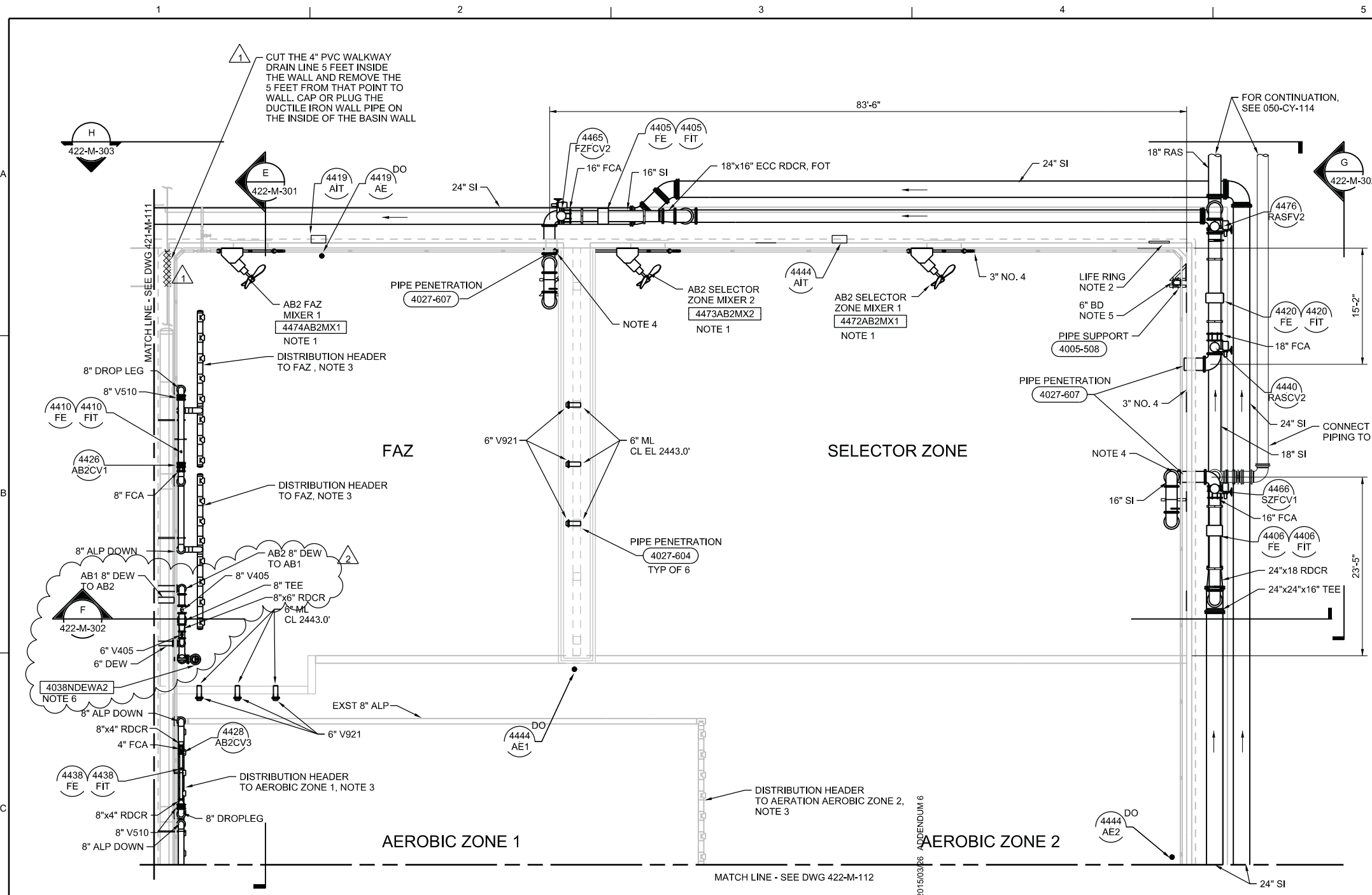


ORIGINAL DOCUMENT STORED AT CH2MHILL/BOISE, ID.

NO.	DATE	REVISION	BY	APVD
2	2015/03/26	ADDENDUM 6	J PIGMAN	G THOMPSON
1	2015/02/13	ADDENDUM 1	L FEITKETHER	G THOMPSON

NAMPA WWTP PHASE 1 UPGRADES	
PROJECT GROUP A	
CITY OF NAMPA	
NAMPA, IDAHO	

CH2MHILL	
PROCESS MECHANICAL	
AERATION BASIN 2 NORTH PLAN	
AS NOTED	
VERIFY SCALE	
BAR IS ONE INCH ON ORIGINAL DRAWING.	
DATE	DECEMBER 2014
PROJ	480770
DWG	422-M-111
SHEET	126 of 157



AERATION BASIN 2 NORTH PLAN
1/8"=1'-0"

KEY PLAN
NTS



NO.	DATE	REVISION	BY	APVD
1	2015/03/26	ADDENDUM 6	JAP	G THOMPSON

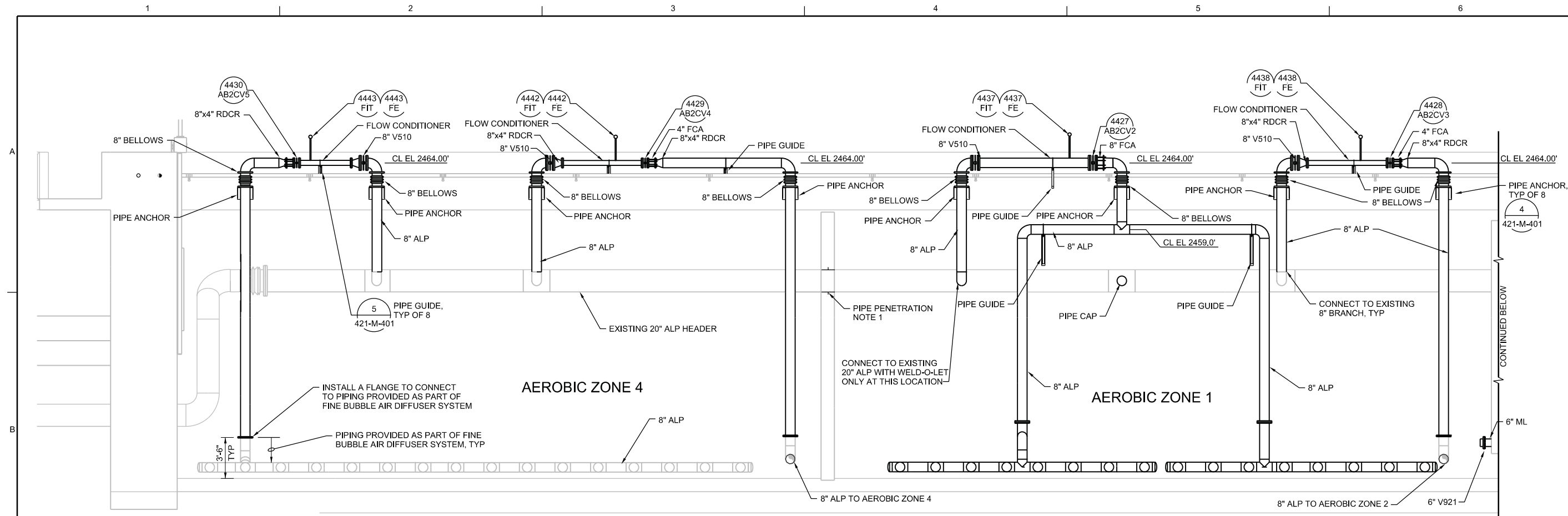
DR	CHK	APVD
A ARANGO	J PIGMAN	L FELTKETHER

NAMPA WWTP PHASE 1 UPGRADES
PROJECT GROUP A
CITY OF NAMPA
NAMPA, IDAHO

PROCESS MECHANICAL
AERATION BASIN 2
SECTIONS

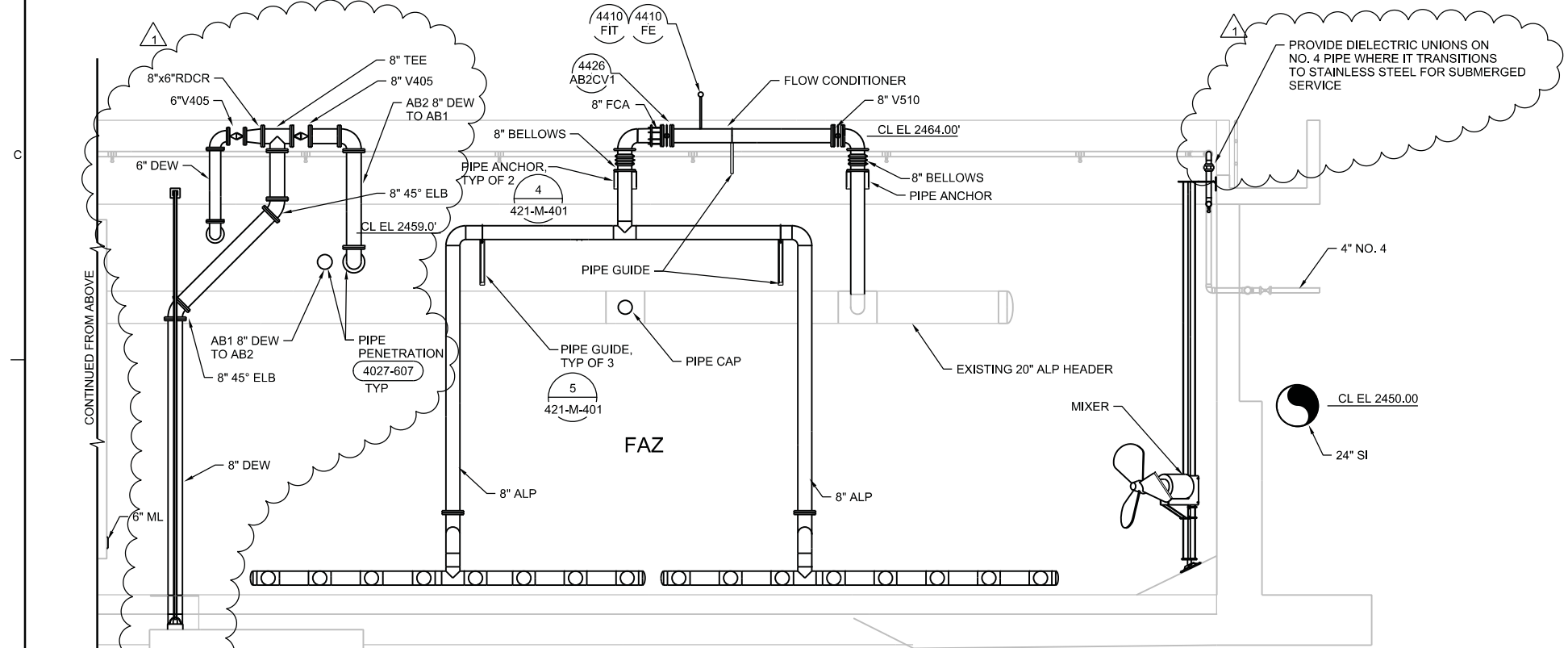
AS NOTED
VERIFY SCALE
BAR IS ONE INCH ON ORIGINAL DRAWING.
DATE DECEMBER 2014
PROJ 480770
DWG 422-M-301
SHEET 128 of 157

BID DOCUMENTS

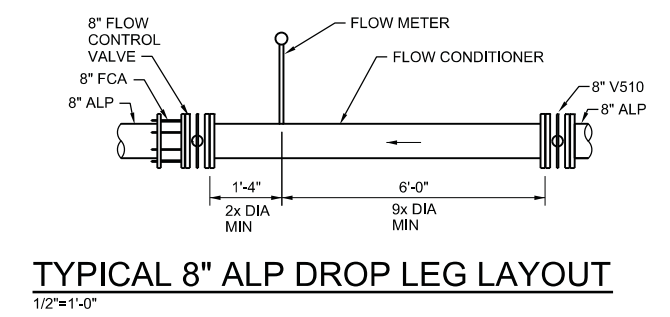
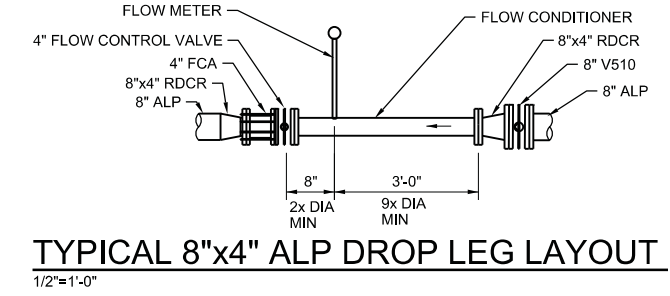


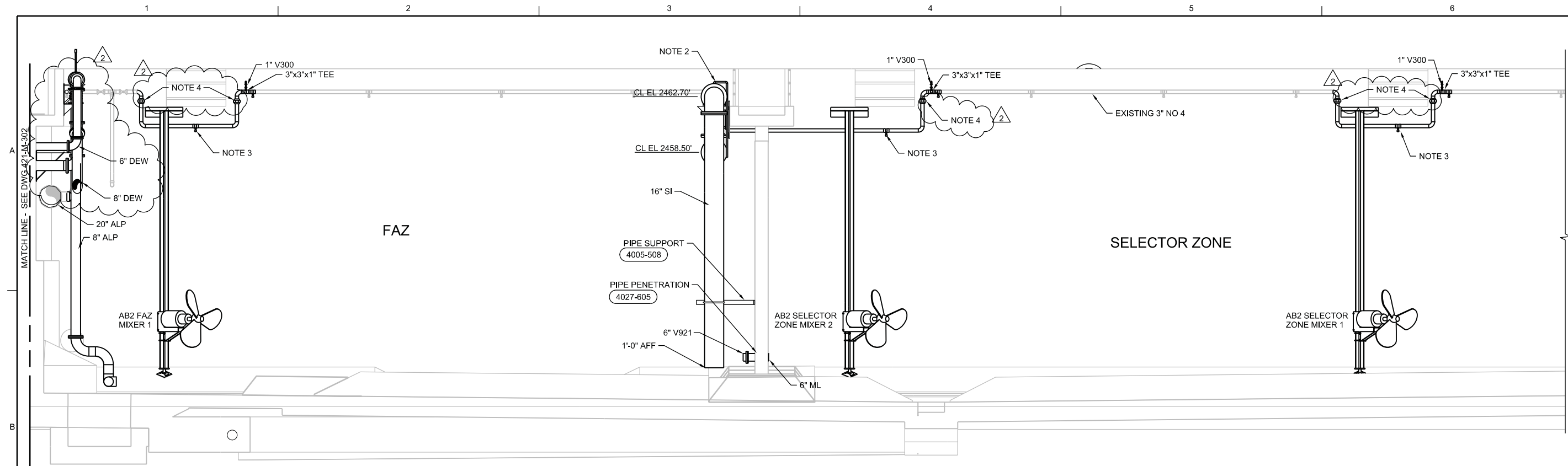
- NOTES:
1. SLEEVE PIPE SIMILAR TO DETAIL 4027-604 EXCEPT SPLIT SLEEVE AND WELD AROUND PIPE AND DO NOT USE SEALANT.

E SECTION
1/4"=1'-0"
422-M-111
422-M-112



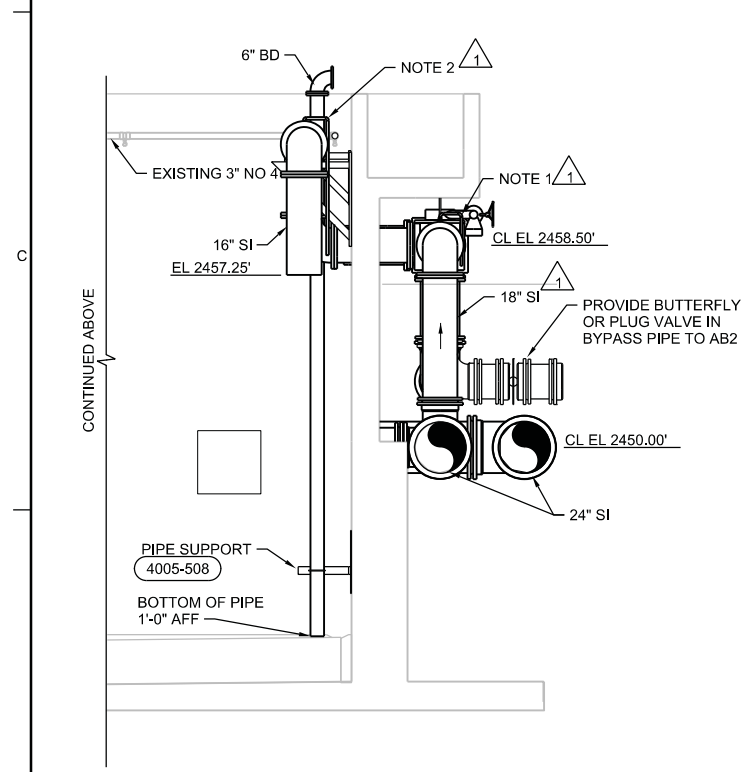
E SECTION
1/4"=1'-0"
422-M-111
422-M-112



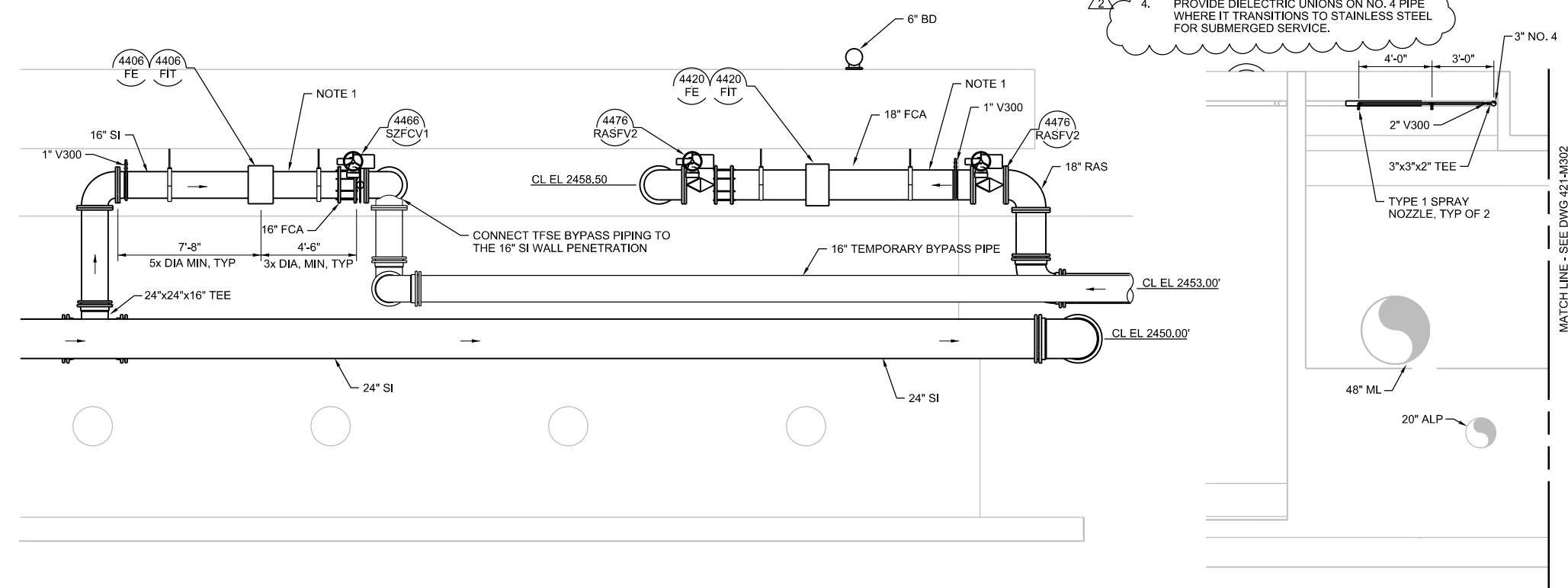


F SECTION
1/4"=1'-0"
422-M-111

- NOTES:
- HEAT TRACE AND INSULATE ALL EXPOSED RAS AND SI PIPES OUTSIDE THE AERATION BASINS.
 - DRILL AND TAP 1" HOLE, AND ELBOW PIPE DOWN TO BASIN.
 - INSTALL AT LEAST 1 TYPE 2 NOZZLE AT EACH LOW POINT IN NO. 4 PIPE.
 - PROVIDE DIELECTRIC UNIONS ON NO. 4 PIPE WHERE IT TRANSITIONS TO STAINLESS STEEL FOR SUBMERGED SERVICE.



F SECTION
1/4"=1'-0"
422-M-111



G SECTION
1/4"=1'-0"
422-M-111

G1 SECTION
1/4"=1'-0"
422-M-111

ORIGINAL DOCUMENT SIGNED BY REGISTRANT ON DECEMBER 16, 2014.

PROFESSIONAL ENGINEER REGISTERED STATE OF IDAHO 3755 LAWRENCE M. FEITKETHER

ORIGINAL DOCUMENT STORED AT CH2MHILL/BOISE, ID.

NO.	DATE	REVISION	CHK	DR	APVD
2	201503/26	ADDENDUM 6	JAP	L	APVD
1	201502/18	ADDENDUM 1	JAP	L	APVD

CONTINUED BELOW

REVISIONS: J PIGMAN, L FEITKETHER, G THOMPSON

CH2MHILL
PROCESS MECHANICAL
AERATION BASIN 2 SECTIONS

NAMPA WWTP PHASE 1 UPGRADES
PROJECT GROUP A
CITY OF NAMPA
NAMPA, IDAHO

AS NOTED
VERIFY SCALE
BAR IS ONE INCH ON ORIGINAL DRAWING.
DATE: DECEMBER 2014
PROJ: 480770
DWG: 422-M-302
SHEET: 129 of 157

REUSE OF DOCUMENTS: THIS DOCUMENT, AND THE IDEAS AND DESIGNS INCORPORATED HEREIN, AS AN INSTRUMENT OF PROFESSIONAL SERVICE, IS THE PROPERTY OF CH2MHILL AND IS NOT TO BE USED, IN WHOLE OR IN PART, FOR ANY OTHER PROJECT WITHOUT THE WRITTEN AUTHORIZATION OF CH2MHILL.

BID DOCUMENTS

1 2 3 4 5 6

GENERAL SHEET NOTES

- NOTES:
- DRILL A 1" HOLE AT THE TOP OF THE PIPE.
 - COORDINATE MIXER LOCATION WITH MIXER'S MANUFACTURER. FOR AERATION BASIN MIXER INSTALLATION, SEE TYP OF 3.
 - PROVIDE AND INSTALL WALL MOUNTED 33"x33"x5.5" FIBERGLASS LIFE RING CABINET, SAFETY YELLOW, NON-LOCKING T-HANDLE WITH 30" LIFE RING AND 90' ROPE WITH FLOAT AS MANUFACTURED BY CHEYENE MANUFACTURING INC.
 - DISTRIBUTION HEADERS ARE SHOWN FOR ILLUSTRATION PURPOSES ONLY. COORDINATE FINAL LOCATION AND DIMENSIONS WITH FINE BUBBLE AIR DIFFUSER SYSTEM MANUFACTURER.
 - PROVIDE AND INSTALL 6" FEMALE CAMLOCK AT THE TOP OF 6" BD PIPE
 - PROVIDE 3"x3"x1" TEES AT 5'-0" O.C. PROVIDE TYPE 2 NOZZLES IN EVERY OTHER TEE FOR A 10'-0" NOZZLE SPACING. CAP REMAINING TEES FOR FUTURE NOZZLES.
 - COORDINATE DEWATERING SUMP PUMP DAVIT CRANE LOCATION WITH DIMENSIONS OF ACTUAL DEWATERING SUMP PUMP FURNISHED.

ORIGINAL DOCUMENT SIGNED BY REGISTRANT ON DECEMBER 16, 2014.



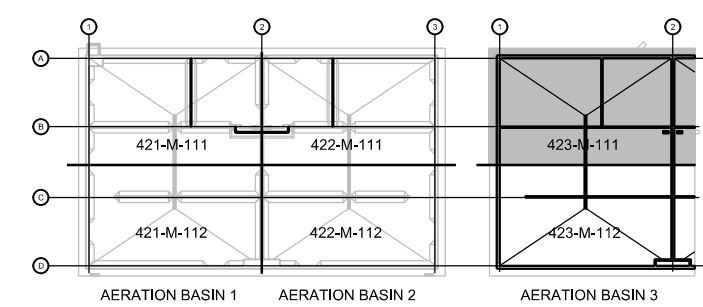
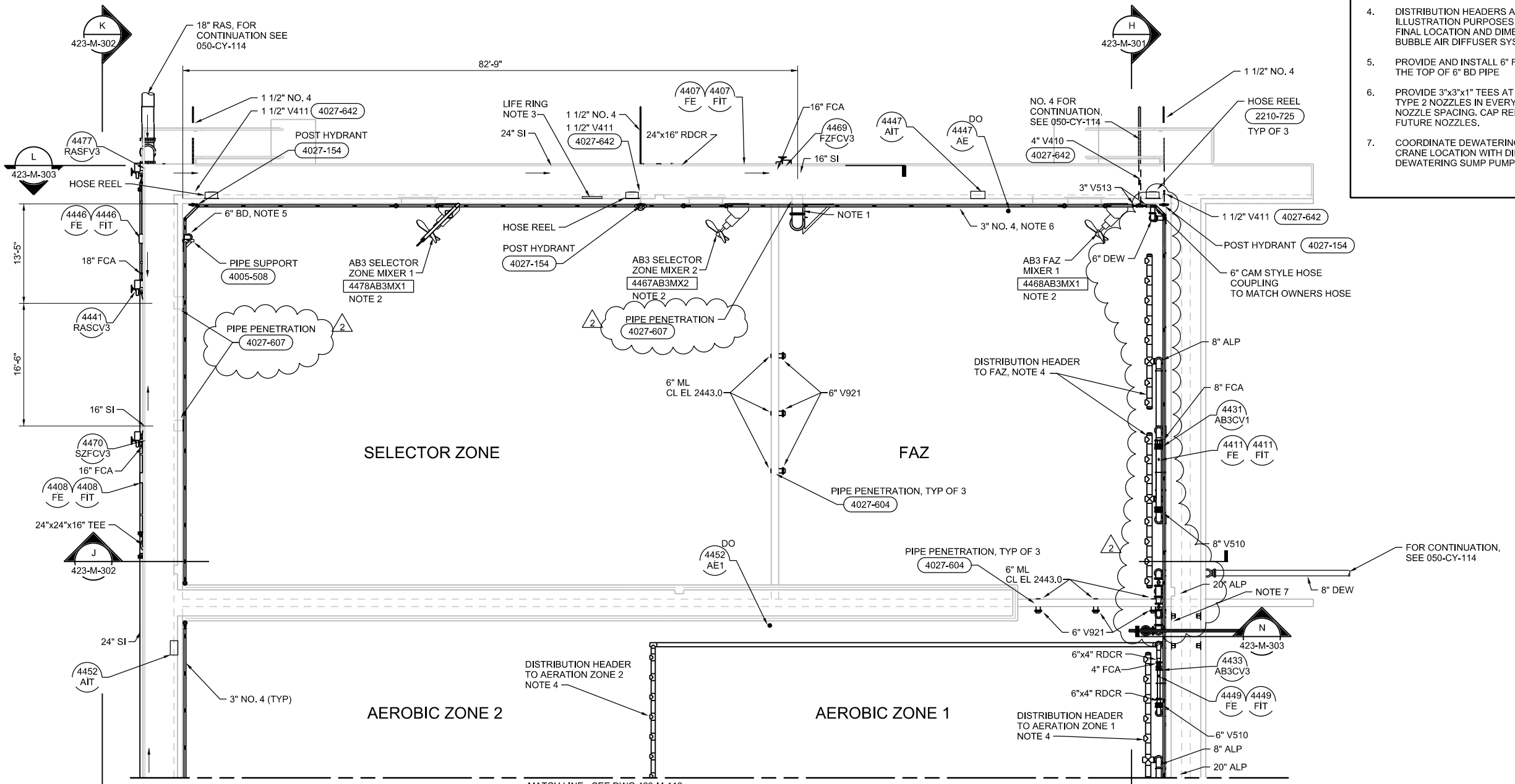
ORIGINAL DOCUMENT STORED AT CH2MHILL/BOISE, ID.

NO.	DATE	DSGN	DR	CHK	REVISION	BY	APVD
2	2015/03/26	ADDENDUM 6		J PIGMAN		JAP	L FEITKETHER
1	2015/02/27	ADDENDUM 3		J PIGMAN		JAP	L FEITKETHER

NAMPA WWTP PHASE 1 UPGRADES
PROJECT GROUP A
CITY OF NAMPA
NAMPA, IDAHO

CH2MHILL
PROCESS MECHANICAL
AERATION BASIN 3 NORTH PLAN

AS NOTED
VERIFY SCALE
BAR IS ONE INCH ON ORIGINAL DRAWING.
DATE: DECEMBER 2014
PROJ: 480770
DWG: 423-M-111
SHEET: 147 of 157



AERATION BASIN 3 NORTH PLAN
1/8"=1'-0"

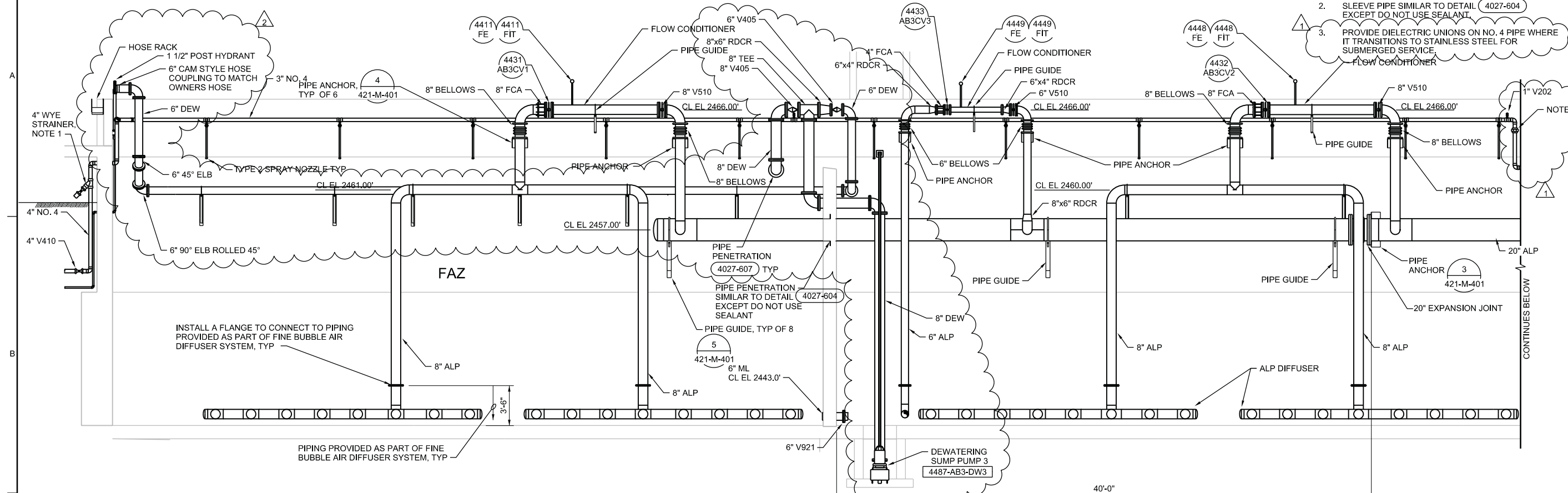
KEY PLAN
NTS

- NOTES:
1. INSTALL WYE STRAINER UPSIDE DOWN AND REPLACE DRAIN PLUG WITH 1/2" V300.
 2. SLEEVE PIPE SIMILAR TO DETAIL 4027-604 EXCEPT DO NOT USE SEALANT.
 3. PROVIDE DIELECTRIC UNIONS ON NO. 4 PIPE WHERE IT TRANSITIONS TO STAINLESS STEEL FOR SUBMERGED SERVICE.

ORIGINAL DOCUMENT SIGNED BY REGISTRANT ON DECEMBER 16, 2014.

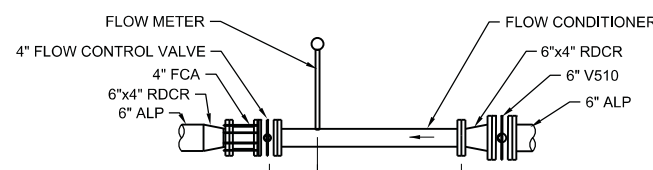
PROFESSIONAL ENGINEER REGISTERED STATE OF IDAHO 3755 LAWRENCE M. FEITKETHNER

ORIGINAL DOCUMENT STORED AT CH2MHILL/BOISE, ID.

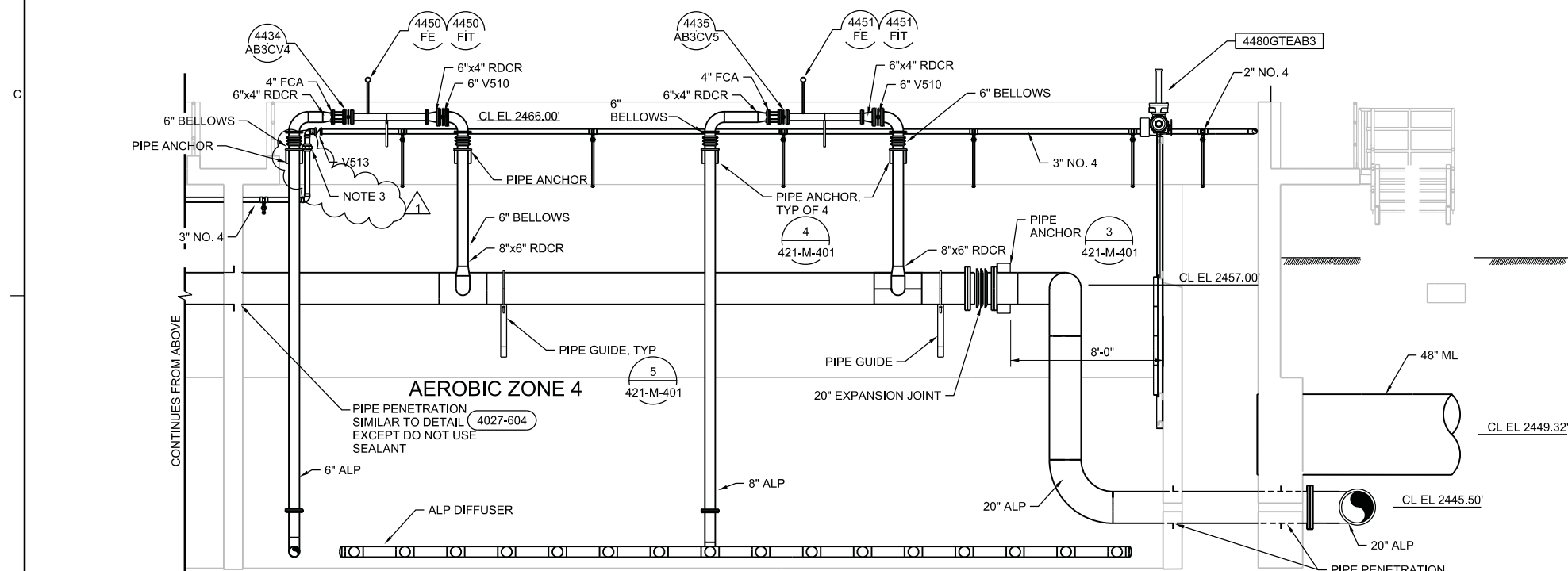


H SECTION
1/4"=1'-0"

423-M-111
423-M-112

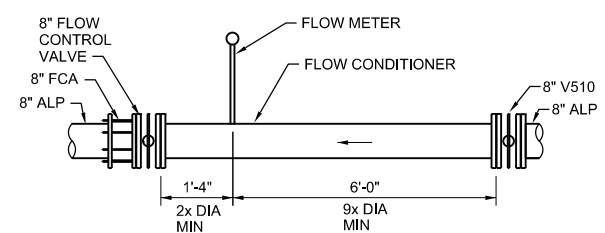


TYPICAL 6" ALP DROP LEG LAYOUT
1/2"=1'-0"



H SECTION
1/4"=1'-0"

423-M-111
423-M-112



TYPICAL 8" ALP DROP LEG LAYOUT
1/2"=1'-0"

NO.	DATE	DR	CHK	REVISION	BY	APVD
1	2015/03/26	A ARANGO	J PIGMAN	ADDENDUM 6	JAP	G THOMPSON

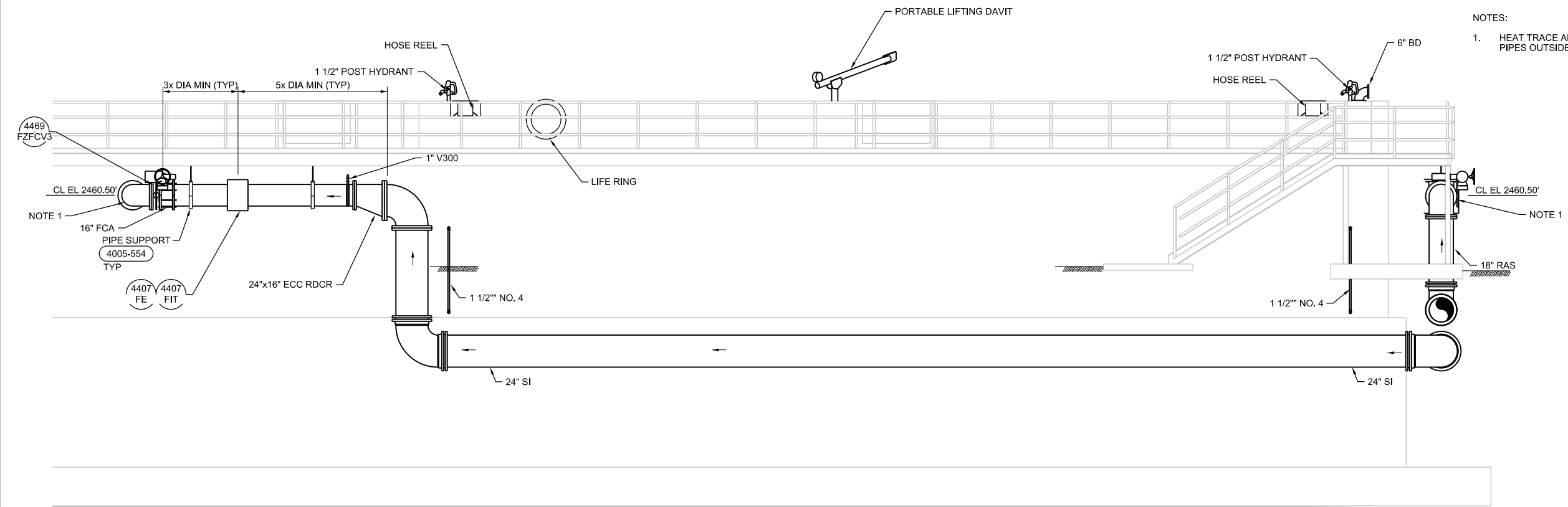
NAMPA WWTP PHASE 1 UPGRADES
PROJECT GROUP A
CITY OF NAMPA
NAMPA, IDAHO

CH2MHILL

PROCESS MECHANICAL
AERATION BASIN 3 SECTIONS

AS NOTED
VERIFY SCALE
BAR IS ONE INCH ON ORIGINAL DRAWING.
DATE DECEMBER 2014
PROJ 480770
DWG 423-M-301
SHEET 149 of 157

1 2 3 4 5 6



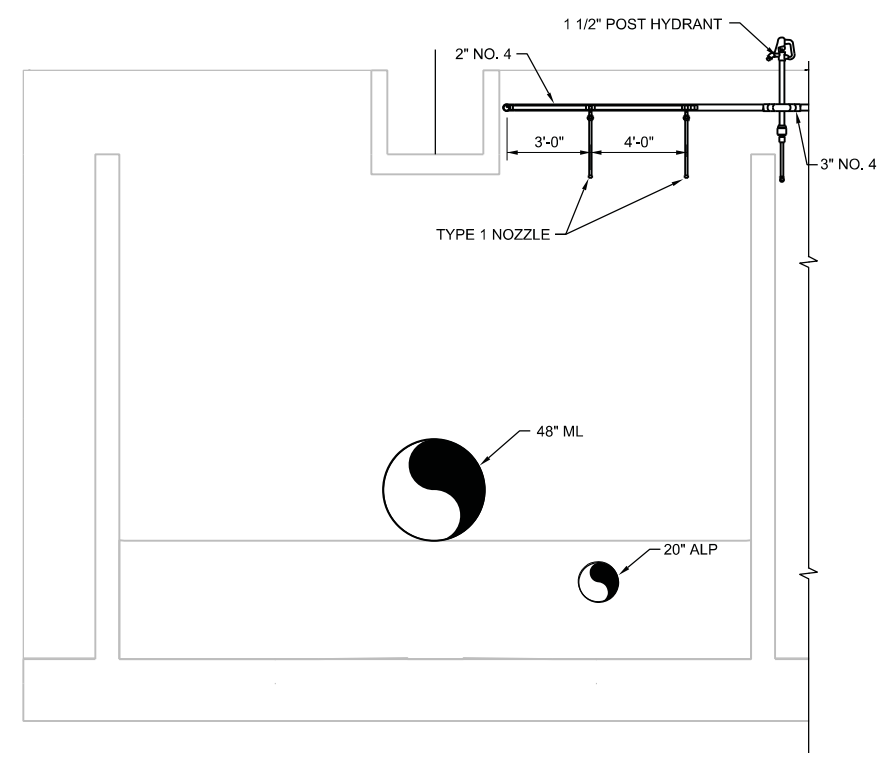
NOTES:
 1. HEAT TRACE AND INSULATE ALL EXPOSED RAS AND SI PIPES OUTSIDE THE AERATION BASIN.

ORIGINAL DOCUMENT SIGNED BY REGISTRANT ON DECEMBER 16, 2014.
 PROFESSIONAL ENGINEER REGISTERED STATE OF IDAHO 3755 LAWRENCE M. FEITKETHER

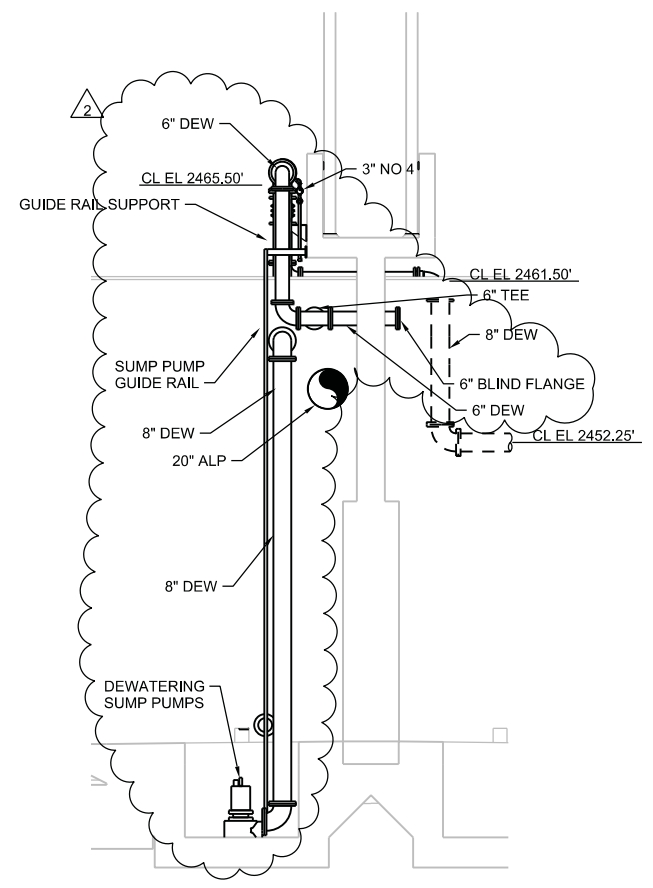
ORIGINAL DOCUMENT STORED AT CH2MHILL/BOISE, ID.

NO.	DATE	REVISION	CHK	DR	APVD
2	201503/26	ADDENDUM 6	J PIGMAN	A ARANGO	G THOMPSON
1	201502/13	ADDENDUM 1	L FEITKETHER		

L SECTION
 1/4"=1'-0"
 423-M-111



M SECTION
 1/4"=1'-0"
 423-M-112



N SECTION
 1/4"=1'-0"
 423-M-112

CH2MHILL
 PROCESS MECHANICAL
 AERATION BASIN 3
 SECTIONS

NAMPA WWTP PHASE 1 UPGRADES
 PROJECT GROUP A
 CITY OF NAMPA
 NAMPA, IDAHO

AS NOTED
 VERIFY SCALE
 BAR IS ONE INCH ON ORIGINAL DRAWING.
 0 1"

DATE	DECEMBER 2014
PROJ	480770
DWG	423-M-303
SHEET	151 of 157

