

March 11, 2016
ADDENDUM #1
IFB 16-17 VIENNA COMMUNITY CENTER SECURITY ACCESS

*******ATTENTION BIDDERS*******

(To be completed and returned with bid response)

1. Q: What version of WinPak are you using?
A: *Version SE 3.0.*
2. Q: Will additional licenses need to be purchased, and who will be responsible?
A: *Honeywell does not require additional licenses to add new panels or doors.*
3. Q: Do you have the door specifications?
A: *The specifications are attached to this document and are thereby incorporated into Addendum #1.*
4. Q: Where will the control panel be?
A: *The switch room at the Vienna Community Center*
5. Q: Who will program the cards?
A: *The Town has cards and will be responsible for their programming.*
6. Q: What are the working hours at the site?
A: *6:00 AM – 3:00 PM, Monday through Friday.*
7. Change in location of the Bid Opening:
The bid opening will be held on March 17, 2016 at 11:00 AM at Vienna Town Hall, 127 Center Street S, Vienna, VA, in the *2nd floor lobby conference room* instead of the Purchasing Office. Bids submitted before 10:45 AM on the day of the bid opening should be delivered to the Purchasing Office. After 10:45 AM they can be submitted to the Purchasing Agent in the referenced conference room.

ALL OTHER TERMS, CONDITIONS, AND SPECIFICATIONS SHALL REMAIN THE SAME.

A copy of this signed addendum must accompany your response as an acknowledgment of its receipt:

NAME AND ADDRESS OF FIRM:

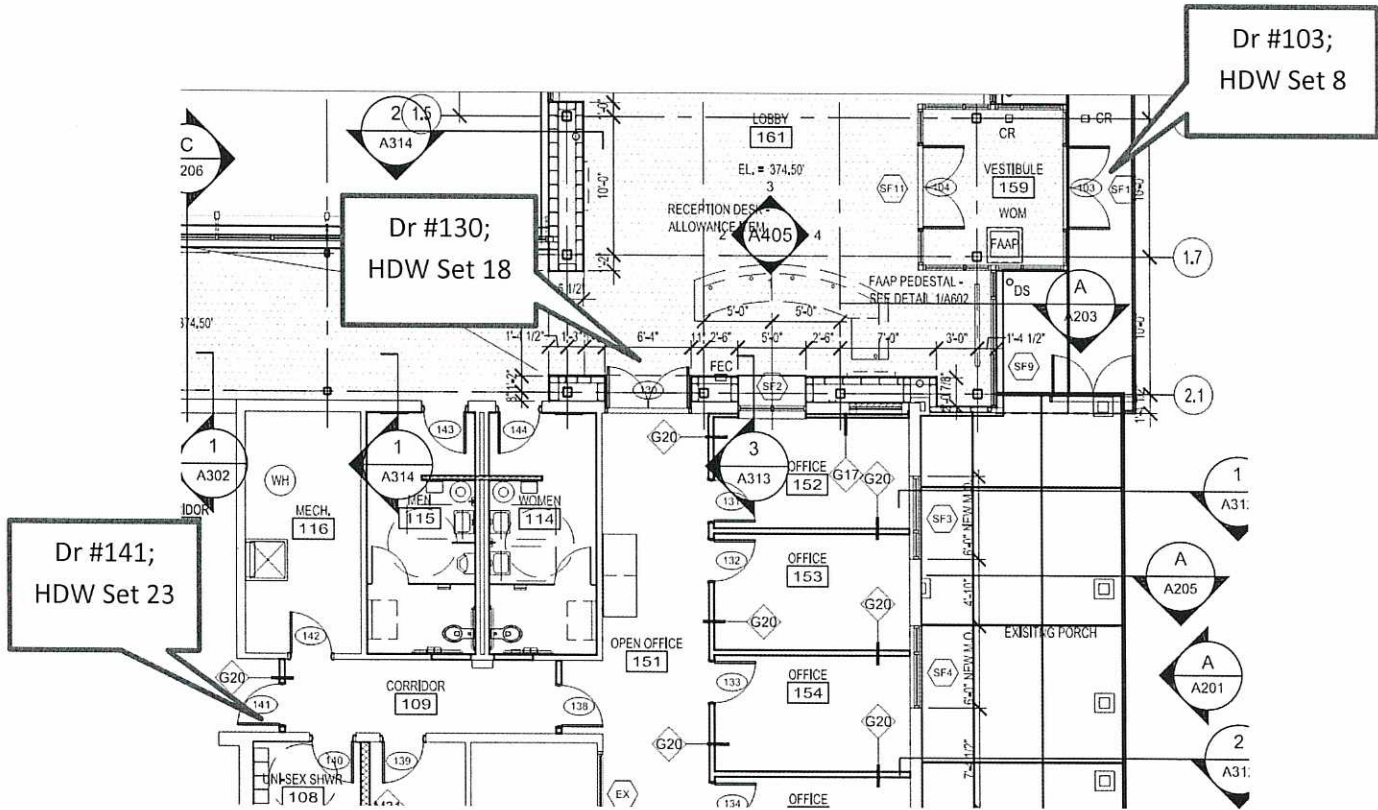
PHONE #: _____ EMAIL: _____

NAME OF AUTHORIZED REPRESENTATIVE:

Please Print

SIGNATURE: _____ DATE: _____

SUBJECT: Door Numbers and locations



FIRST FLOOR - ADDITION

DOOR AND FRAME SCHEDULE

DOOR NO.	LOCATION		DOOR				FRAME				RATING	HDW	NOTES					
			TYPE	MATERIAL	FINISH	SILL	UC	TYPE	MATERIAL	THROAT				FINISH				
															SIZE	THK	HEAD	JAMB
100	CORRIDOR 162	CORRIDOR 166	N	HM	PNT	--	PR 3'-10" x 7'-0"	1 3/4"	--	2	HM	4 3/4"	PNT	--	60 MIN.	13	SEE DOOR SCHEDULE NOTE 13, 15	
101	VESTIBULE 160	EXTERIOR	FG	ALUM	FACT.	1.9	PR 3'-0" x 7'-0"	1 3/4"	--	4	ALUM	4 1/2"	FACT.	21	25		SEE DOOR SCHEDULE NOTES 3, 5, 16	
102	LOBBY 161	VESTIBULE 160	FG	ALUM	FACT.	9	PR 3'-0" x 7'-0"	1 3/4"	--	4	ALUM	4 1/2"	FACT.	21	25		SEE DOOR SCHEDULE NOTE 5	
103	VESTIBULE 160	EXTERIOR	FG	ALUM	FACT.	1.9	PR 3'-0" x 7'-0"	1 3/4"	--	4	ALUM	4 1/2"	FACT.	21	25		SEE DOOR SCHEDULE NOTES 3, 5, 16	
104	LOBBY 161	VESTIBULE 160	FG	ALUM	FACT.	9	PR 3'-0" x 7'-0"	1 3/4"	--	4	ALUM	4 1/2"	FACT.	21	25		SEE DOOR SCHEDULE NOTE 5	
105	CORRIDOR 166	WOMEN 163	F	50WD	5&V	--	3'-0" x 7'-0"	1 3/4"	--	1	HM	4 3/4"	PNT	7	17	9	SEE DOOR SCHEDULE NOTE 9, 17	
106	CUSTOMAL 164	CORRIDOR 166	F	50WD	5&V	--	3'-0" x 7'-0"	1 3/4"	5/8"	1	HM	4 3/4"	PNT	7	17	10	--	
107	CORRIDOR 166	MEN 165	F	50WD	5&V	--	3'-0" x 7'-0"	1 3/4"	--	1	HM	4 3/4"	PNT	7	17	9	SEE DOOR SCHEDULE NOTE 9, 17	
108	CORRIDOR 166	BUILDING STORAGE 167	F	50WD	5&V	--	3'-0" x 7'-0"	1 3/4"	--	1	HM	4 3/4"	PNT	7	17	11	--	
109	CORRIDOR 166	EXTERIOR	FG	ALUM	FACT.	1.9	PR 3'-0" x 7'-0"	1 3/4"	--	5	ALUM	4 1/2"	FACT.	24	25	12, 1	SEE DOOR SCHEDULE NOTES 3, 5, 16	
110	CORRIDOR 166	EXTERIOR	FG	ALUM	FACT.	1.9	PR 3'-0" x 7'-0"	1 3/4"	--	5	ALUM	4 1/2"	FACT.	24	25	12	SEE DOOR SCHEDULE NOTES 3, 5, 16	
111	GYMNASIUM 169	CORRIDOR 166	F	HM	PNT	2	PR 3'-0" x 6'-9"	1 3/4"	--	2	HM	4 3/4"	PNT	5	15	13	SEE DOOR SCHEDULE NOTES 3, 5, 16	
112	GYMNASIUM 169	EXTERIOR	F	HM	PNT	0	PR 3'-0" x 6'-9"	1 3/4"	--	1	HM	4 3/4"	PNT	3	13	14	SEE DOOR SCHEDULE NOTES 3, 5, 16	
113	GYMNASIUM 169	EXTERIOR	F	HM	PNT	0	PR 3'-0" x 6'-9"	1 3/4"	--	1	HM	4 3/4"	PNT	3	13	14	SEE DOOR SCHEDULE NOTES 3, 5, 16	
114	GYM STORAGE 170	GYMNASIUM 169	F	50WD	5&V	2	PR 3'-0" x 6'-9"	1 3/4"	--	2	HM	5 1/4"	PNT	6	16	42	--	
115	GYMNASIUM 169	CORRIDOR 166	F	HM	PNT	2	PR 3'-0" x 6'-9"	1 3/4"	--	2	HM	4 3/4"	PNT	5	15	150 MIN.	13	SEE DOOR SCHEDULE NOTES 3, 5, 16
116	CORRIDOR 166	EXTERIOR	FG	ALUM	FACT.	1.9	PR 3'-0" x 7'-0"	1 3/4"	--	5	ALUM	4 1/2"	FACT.	24	25	12, 1	SEE DOOR SCHEDULE NOTES 3, 5, 16	
117	CORRIDOR 166	EXTERIOR	FG	ALUM	FACT.	1.9	PR 3'-0" x 7'-0"	1 3/4"	--	5	ALUM	4 1/2"	FACT.	24	25	12	SEE DOOR SCHEDULE NOTES 3, 5, 16	
118	THEATRE STORAGE 171	EXTERIOR	N	HM	PNT	1	PR 3'-0" x 6'-9"	1 3/4"	--	1	HM	4 3/4"	PNT	3	13	60 MIN.	16	SEE DOOR SCHEDULE NOTE 13
119	ELECT. ROOM 169	EXTERIOR	N	HM	PNT	1	PR 3'-0" x 7'-3"	1 3/4"	--	1	HM	4 3/4"	PNT	3	13	60 MIN.	17	SEE DOOR SCHEDULE NOTE 13

Handwritten initials and a star symbol.

FIRST FLOOR - EXISTING BUILDING

DOOR AND FRAME SCHEDULE

DOOR NO.	LOCATION		DOOR			FRAME				RATING	HDW	NOTES		
	FROM	TO	TYPE	MATERIAL	FINISH	SILL	UC	DETAIL						
								SIZE	THK				TYPE	MATL
130	LOBBY 161	OFFICE 151	FG	ALUM	FACT.	7	..	3	ALUM	4 1/2"	FACT	2	12	SEE DOOR SCHEDULE NOTE 5, 14
131	OFFICE 151	OFFICE 152	F	50WD	50V	5	..	1	HM	4 7/8"	PNT	6	19	..
132	OFFICE 151	OFFICE 153	F	50WD	50V	5	..	1	HM	4 7/8"	PNT	6	19	..
133	OFFICE 151	OFFICE 154	F	50WD	50V	5	..	1	HM	4 7/8"	PNT	5	19	..
134	OFFICE 151	OFFICE 155	F	50WD	50V	5	..	1	HM	4 7/8"	PNT	6	19	..
135	OFFICE 151	DIRECTOR'S OFFICE 156	F	50WD	50V	5	..	1	HM	4 7/8"	PNT	6	19	..
136	OFFICE 151	OFFICE 105	F	50WD	50V	5	..	1	HM	4 7/8"	PNT	6	19	SEE DOOR SCHEDULE NOTE 11
137	OFFICE 151	OFFICE 106	F	50WD	50V	5	..	1	HM	4 7/8"	PNT	6	19	SEE DOOR SCHEDULE NOTE 11
138	CORRIDOR 109	OFFICE 151	N	50WD	50V	5	..	1	HM	4 7/8"	PNT	6	19	SEE DOOR SCHEDULE NOTE 9
139	CORRIDOR 109	TEL. CLOS. 107	N	50WD	50V	5	..	1	HM	4 3/4"	PNT	5	15	SEE DOOR SCHEDULE NOTE 11
140	CORRIDOR 109	UNI-SEX SHOWER 108	F	50WD	50V	7	5/8"	1	HM	4 3/4"	PNT	4	13	SEE DOOR SCHEDULE NOTES 9, 11
141	CORRIDOR 109	CORRIDOR 117	N	50WD	50V	5	..	1	HM	4 7/8"	PNT	6	19	SEE DOOR SCHEDULE NOTE 9
142	CORRIDOR 109	MECH. 116	F	50WD	50V	7	..	1	HM	4 3/4"	PNT	4	13	SEE DOOR SCHEDULE NOTE 11
143	CORRIDOR 109	MEN 115	F	50WD	50V	..	5/8"	1	HM	4 3/4"	PNT	1	11	SEE DOOR SCHEDULE NOTE 9, 17
144	CORRIDOR 109	WOMEN 114	F	50WD	50V	..	5/8"	1	HM	4 3/4"	PNT	1	11	SEE DOOR SCHEDULE NOTE 9, 17
145	ELEV. LOBBY 116	RESTROOM 110	F	50WD	50V	7	5/8"	1	HM	4 3/4"	PNT	4	14	SEE SCHEDULE NOTE 15
146	STAIR 0005-4	ELEV. LOBBY 116	N	50WD	50V	2	7	1	HM	4 3/4"	PNT	5	15	SEE DOOR SCHEDULE NOTES 9, 13, 15
147	STAIR 0005-4	CORRIDOR 119	N	50WD	50V	2	7	1	HM	4 3/4"	PNT	5	15	SEE DOOR SCHEDULE NOTES 9, 13, 15
148	CORRIDOR 122	CLASSROOM 123	F	50WD	50V	5	5	1	HM	4 3/4"	PNT	6	16	SEE DOOR SCHEDULE NOTE 11
149	CLOSET 123A	CLASSROOM 123	F	50WD	50V	5	..	1	HM	4 7/8"	PNT	7	16	SEE DOOR SCHEDULE NOTE 11
150	CLOSET 123B	CLASSROOM 123	F	50WD	50V	5	..	1	HM	4 3/4"	PNT	7	16	SEE DOOR SCHEDULE NOTE 11
151	MACH. ROOM 120	CORRIDOR 122	F	EXST	EXST	7	..	1	7	7	?	?	4	SEE DOOR SCHEDULE NOTE 4
152	STORAGE 121	CORRIDOR 122	F	EXST	EXST	7	..	1	7	7	?	?	4	SEE DOOR SCHEDULE NOTE 4
153	MULTI-PURPOSE 125	CORRIDOR 122	N	50WD	50V	6	..	2	HM	4 1/4"	PNT	4	14	SEE DOOR SCHEDULE 9
154	MULTI-PURPOSE 125	STORAGE 124A	F	50WD	50V	4	..	2	HM	4 1/4"	PNT	4	14	SEE DOOR SCHEDULE NOTES 11, 13
155	MULTI-PURPOSE 125	STAIR 0005-3	N	50WD	50V	4	..	1	HM	4 3/4"	PNT	4	15	SEE DOOR SCHEDULE NOTES 9, 11, 13, 15
156	STAIR 0005-3	CORRIDOR 126	N	50WD	50V	4	..	1	HM	4 3/4"	PNT	6	16	SEE DOOR SCHEDULE NOTES 9, 11, 13, 15
157	CORRIDOR 126	CORRIDOR 162	F	HM	PNT	7	..	1	HM	4 3/4"	PNT	1	11	SEE DOOR SCHEDULE NOTE 15
158	CATERING KITCHEN 127	CORRIDOR 166	F	HM	PNT	2	HM	4 3/4"	PNT	1	11	SEE DOOR SCHEDULE NOTE 10, 19, SIMULATED WOOD FINISH @ CORRIDOR SIDE
159	CATERING KITCHEN 127	CORRIDOR 166	O=C	STL	FACT	26	..	1	STL	3 3/4"	PNT	26	27	SEE DOOR SCHEDULE NOTE 6
160	MULTI-PURPOSE 125	STAIR 0005-2	N	50WD	50V	4	..	1	HM	4 3/4"	PNT	5	15	SEE DOOR SCHEDULE NOTES 11, 13, 15, 19
161	STAIR 0005-2	CORRIDOR 166	N	HM	PNT	4	..	2	HM	4 3/4"	PNT	7	17	SEE SCHEDULE NOTE 13, 15
162	STAGE 129	CORRIDOR 129	N	50WD	50V	7	..	1	HM	4 3/4"	PNT	6	16	SEE DOOR SCHEDULE NOTES 9, 11, 13, 15
163	STAGE 129	DRESSING 131	F	EXST	EXST	4	..	1	?	?	?	?	1	SEE DOOR SCHEDULE NOTE 4
164	DRESSING 131	TOILET 130	F	EXST	EXST	1	?	?	?	?	3	SEE DOOR SCHEDULE NOTE 4
165	STAGE 129	DRESSING 132	F	EXST	EXST	4	..	1	?	?	?	?	1	SEE DOOR SCHEDULE NOTE 4
166	DRESSING 132	TOILET 133	F	EXST	EXST	1	?	?	?	?	3	SEE DOOR SCHEDULE NOTE 4
167	STAGE 129	EXTERIOR	F	EXST	EXST	1	?	?	?	?	23	SEE DOOR SCHEDULE NOTE 1
168	AUDITORIUM 134	EXTERIOR	F	HM	PNT	1	..	1	HM	4 3/4"	PNT	7	17	SEE DOOR SCHEDULE NOTES 9, 11, 13, 15
169	AUDITORIUM 134	CORRIDOR 129	N	50WD	50V	6	..	1	HM	4 3/4"	PNT	6	16	SEE DOOR SCHEDULE NOTES 9, 11, 13, 15
170	AUDITORIUM 134	STORAGE 134A	F	50WD	50V	7	..	1	HM	4 3/4"	PNT	6	16	SEE DOOR SCHEDULE NOTES 11, 13, 15, 19
171	STORAGE 134A	AUDITORIUM 134	F	50WD	50V	6	..	2	HM	4 3/4"	PNT	22	16	SEE DOOR SCHEDULE NOTES 11, 13, 15, 19

SEE DOOR SCHEDULE NOTE 11, 13, 15, 19

DOOR SCHEDULE NOTES

1. EXISTING HOLLOW METAL EXTERIOR DOOR, FRAME & HARDWARE TO REMAIN. REPLACE LOCKSET TO FUNCTION WITH NEW DOOR KEYING SYSTEM. REFINISH.
2. EXISTING ALUMINUM AND GLASS EXTERIOR DOOR, PROVIDE CARD READER AND ASSOCIATED INFRASTRUCTURE.
3. PROVIDE CARD READER.
4. EXISTING DOOR, FRAME, AND HARDWARE. REPLACE LOCKSET TO FUNCTION NEW DOOR KEYING SYSTEM. REFINISH.
5. PROVIDE ADA POWER ACCESS AUTOMATIC DOOR OPENER.
6. STAINLESS STEEL ROLL-UP SERVICE COUNTER DOOR.
7. HOLLOW METAL DOOR WITH SIMULATED WOOD PANEL FINISH.
8. EXISTING ALUMINUM AND GLASS DOOR TO REMAIN.
9. PROVIDE DOOR CLOSER.
10. HOLLOW METAL DOOR WITH SIMULATED WOOD PANEL FINISH ON THE INTERIOR AND PAINTED STEEL PANEL ON THE EXTERIOR SIDE.
11. NEW REPLACEMENT DOOR INSTALLED ON EXISTING FRAME. VERIFY IN FIELD (V.I.F) EXISTING FRAME SIZE.
12. PROVIDE SOUND SEALS TO DOOR FRAMES.
13. PROVIDE COMBINATION OF FIRE/SMOKE SEALING/GASKETING AGAINST FIRE AND SMOKE TRANSFER FOR THE RATED DOOR ASSEMBLY INDICATED.
14. PROVIDE PANIC EXIT HARDWARE TO NON-FIRE-RESISTANCE RATED EXIST DOOR.
15. PROVIDE FIRE -EXIST HARDWARE TO FIRE-RESISTANCE RATED EXIST DOOR.
16. PROVIDE ACCESSIBLE EXIST DOOR SIGNAGE.
17. PROVIDE TOILET ROOM SIGNAGE.
18. PROVIDE FAMILY TOILET ROOM SIGNAGE.
19. FIRE RATED DOOR WITH SELF CLOSING AND SELF LATCHING HARDWARE.

Set: 6.1 – Stair

Doors: 147

3 Hinge	T4A3786 4-1/2" x 4-1/2"	US26D	MK
1 Exit Device	12 43 8815 F x 715-8 ETL	US32D	SA
1 Closer	351 P10	EN	SA
1 Kickplate	K1050 8" x 2" LDW 4BE CSK	US32D	RO
1 Wall Stop	406	US32D	RO
1 Gasketing (Set)	S88 BL x DOW x DOH		PE

Existing frame to remain

The general contractor shall verify that all new hardware will work with existing frame preps

Set: 7 – Existing Exterior Stair Door

Doors: 010

1 Exit Device	16 21 43 8804 J x 704 ETL x DG1 x MK	US32D	SA
1 Exit Device	16 21 43 8810 J x 710 ETL x DG1 x MK	US32D	SA
1 Removable Mullion	21 L980S x 96" x DG1 x MK	PC	SA

(Removable mullion to be cut to size in the field)

Existing door and frame to remain

Balance of hardware existing to remain

The general contractor shall verify that all new hardware will work with existing door and frame preps

Set: 8 – Exterior Main Entry

Doors: 101, 103

2 Pivot (Set)	147	626	RF
2 Electric Intermediate Pivot	E-M19 x QC-12	626	RF
2 ElectroLynx Harness	QC-C1500P		MK
<i>(Install between electric intermediate pivot and junction box)</i>			
2 Dual Sense Bar	EL-DSB-CL x 24VDC		SU
2 ElectroLynx Harness	QC-CXXX x required length		MK
<i>(Install between electric intermediate pivot and dual sense bar)</i>			
2 Pull	RM201 x Type 12HD mounting	US32D	RO
1 Automatic Door Operator	6060 x 120VAC	689	NO
<i>(For RHR leaf of pair)</i>			
1 Vestibule Press Switch	504 x 125VAC		NO
1 Press Wall Switch	505 x 125VAC		NO
1 Closer	351 P10 x 581-2	EN	SA
1 Mounting Plate	351-D	EN	SA
2 Overhead Stop	69XS x 90 deg	US26D	SA
1 Threshold	170 A x DOW x MS & ES25		PE
2 Door Bottom Seal	345 AV x DOW		PE
1 Astragal (Set)	(2) 297 AS x DOH		PE
1 Drip Strip	346 C x DOW + 4"		PE
2 Electromagnetic Lock	M62-B x 24VDC		SU
1 Card Reader	Furnished and installed by security contractor		00

DR 103

1 Power Supply	BPS-24-1	SU
1 Digital Timer	DT-7	SU
1 Battery Back-up	B-24-5	SU
1 Wiring Diagram	WD-SYSPK	SA

Gasketing furnished by door manufacturer

Card reader to be used by authorized persons to gain entry from the exterior side of the opening

Card reader to be used to deactivate the electromagnetic locks and allow for use of the exterior press wall switch

Digital timer to deactivate the electromagnetic locks and activate the exterior press wall switch for normal operation and activate the electromagnetic locks and deactivate the exterior press wall switch for after hours operation

Dual sense bars to deactivate the electromagnetic locks and allow for immediate egress at all times

Vestibule press switch to deactivate the electromagnetic lock and activate the automatic door operator at all times

Set: 8.1 – Main Entry Vestibule

Doors: 102, 104

2 Pivot (Set)	147	626	RF
2 Intermediate Pivot	M19	626	RF
2 Dummy Dual Sense Bar	D-DSB-CL		SU
2 Pull	RM201 x Type 12HD mounting	US32D	RO
1 Automatic Door Operator <i>(For RHR leaf only)</i>	6060 x 120VAC	689	NO
1 Press Wall Switch	505 x 125VAC		NO
1 Closer	351 P10 x 581-2	EN	SA
1 Mounting Plate	351-D	EN	SA
2 Overhead Stop	69XS x 90 deg	US26D	SA
1 Threshold	170 A x DOW x MS & ES25		PE
2 Door Bottom Seal	321 CN x DOW		PE
1 Astragal (Set)	(2) 297 AS x DOH		PE

Gasketing furnished by frame manufacturer

Vestibule press switch to operate the automatic door operator

Lobby press wall switch to activate the automatic door operator

Set: 9 – Group Toilet

Doors: 105, 107, 143, 144, 185

3 Hinge	T4A3786 4-1/2" x 4-1/2"	US26D	MK
1 Classroom Deadlock	21 487 x DG1 x MK	US26D	SA
1 Push Plate	70C 4 x 16	US32D	RO
1 Pull Plate	110 x 70C 4 x 16	US32D	RO
1 Closer	421 CTB	EN	SA
1 Kickplate	K1050 8" x 2" LDW 4BE CSK	US32D	RO
1 Mop Plate	K1050 4" x 1" LDW 4BE CSK	US32D	RO
1 Wall Stop <i>(For door 105 and 107)</i>	406	US32D	RO
1 Door Stop	481	US26D	RO
3 Silencer	608		RO

1	Exit Device	12 43 8810 F	US32D	SA
1	Removable Mullion	21 12-L980 x 96" x DG1 x MK	PC	SA
	<i>(Removable mullion to be cut to size in the field)</i>			
2	Closer	351 P3	EN	SA
2	Kickplate	K1050 8" x 2" LDW 4BE CSK	US32D	RO
2	Overhead Stop	59XS x 90 deg	US26D	SA
1	Threshold	1715 A x DOW x MS & ES25		PE
	<i>(Threshold to be notched for removable mullion in the field)</i>			
1	Gasketing (Set)	S88 BL x DOW x DOH		PE
1	Mullion Door Seal	5110 BL x DOH		PE
2	Door Bottom Seal	345 AV x DOW		PE
1	Drip Strip	346 C x DOW + 4"		PE
2	Door Position Switch	DPS-M-BK		SU

DR 130

Set: 18 – Open Office

Doors: 130

5	Hinge	T4A3786 4-1/2" x 4-1/2" NRP	US26D	MK
1	Electric Hinge	T4A3786 4-1/2" x 4-1/2" QC-12	US26D	MK
	<i>(Install at middle hinge-active leaf only)</i>			
1	ElectroLynx Harness	QC-C1500P		MK
	<i>(Install between electric hinge and junction box)</i>			
1	Electric Latch Retraction Exit Device	16 21 43 56 AD8413 F x 713-4 ETL x DG1 x	US32D	SA
	(Fail Secure)	MK x 24VDC		
1	ElectroLynx Harness	QC-CXXX x required length		MK
	<i>(Install between electric hinge and electric latch retraction exit device)</i>			
1	Exit Device	16 21 43 AD8410 F x 710 ETL x DG1 x MK	US32D	SA
1	Automatic Door Operator	6060 x 120VAC	689	NO
	<i>(For active leaf of pair only)</i>			
2	Press Wall Switch	505 x 125VAC		NO
1	Closer/Stop	351 CPS x 581-2	EN	SA
1	Mounting Plate	351-D	EN	SA
1	Astragal (Set)	(2) 297 AS x DOH		PE
1	Key Switch	MKA-2 x 24VDC		SU
1	Mortise Cylinder	21 42 x DG1 x MK	US26D	SA
1	Power Supply	3540		SA
1	Wiring Diagram	WD-SYSPK		SA

Key switch to be used to activate and deactivate the corridor side press wall switch
 Open office side press wall switch to retract the latch of the electric latch retraction exit device and then activate the automatic door operator at all times

Set: 19 – Office

Doors: 131, 132, 133, 134, 135, 136, 137

3 Hinge	TA2714 4-1/2" x 4-1/2"	US26D	MK
1 Office Lockset	21 8255 LNL x DG1 x MK	US26D	SA
1 Wall Stop	406	US32D	RO
3 Silencer	608		RO
1 Coat Hook	RM802	US26D	RO

Set: 20 – Open Office

Doors: 138

3 Hinge	T4A3786 4-1/2" x 4-1/2"	US26D	MK
1 Office Lockset	21 8255 LNL x DG1 x MK	US26D	SA
1 Closer	351 O	EN	SA
1 Kickplate	K1050 8" x 2" LDW 4BE CSK	US32D	RO
1 Wall Stop	406	US32D	RO
3 Silencer	608		RO

Set: 21 – Utility

Doors: 139

3 Hinge	TA2714 4-1/2" x 4-1/2"	US26D	MK
1 Storeroom Lockset	21 8204 LNL x DG1 x MK	US26D	SA
1 Closer	351 O	EN	SA
1 Kickplate	K1050 8" x 2" LDW 4BE CSK	US32D	RO
1 Door Stop	481	US26D	RO
3 Silencer	608		RO

Existing frame to remain

The general contractor shall verify that all new hardware will work with existing frame preps

Set: 22 – Shower

Doors: 140

3 Hinge	T4A3786 4-1/2" x 4-1/2"	US26D	MK
1 Privacy Set	49 8265 LNL	US26D	SA
1 Closer	421 CTB	EN	SA
1 Kickplate	K1050 8" x 2" LDW 4BE CSK	US32D	RO
1 Mop Plate	K1050 4" x 1" LDW 4BE CSK	US32D	RO
1 Wall Stop	406	US32D	RO
3 Silencer	608		RO

Existing frame to remain

The general contractor shall verify that all new hardware will work with existing frame preps

Set: 23 – Corridor

Doors: 141

DR 141

SET 23

3 Hinge	T4A3786 4-1/2" x 4-1/2" NRP	US26D	MK
1 Classroom Lockset	21 8237 LNL x DG1 x MK	US26D	SA
1 Closer	351 P10	EN	SA
1 Kickplate	K1050 8" x 2" LDW 4BE CSK	US32D	RO
1 Wall Stop	406	US32D	RO
3 Silencer	608		RO

Set: 23.1 – Exercise Room

Doors: 202

3 Hinge	T4A3786 4-1/2" x 4-1/2"	US26D	MK
1 Classroom Lockset	21 8237 LNL x DG1 x MK	US26D	SA
1 Closer	351 O	EN	SA
1 Kickplate	K1050 8" x 2" LDW 4BE CSK	US32D	RO
1 Door Stop	481	US26D	RO
3 Silencer	608		RO

Existing frame to remain

The general contractor shall verify that all new hardware will work with existing frame preps

Set: 24 – Mechanical Room

Doors: 142

3 Hinge	TA2714 4-1/2" x 4-1/2"	US26D	MK
1 Storeroom Lockset	21 8204 LNL x DG1 x MK	US26D	SA
1 Closer	351 O	EN	SA
1 Kickplate	K1050 8" x 2" LDW 4BE CSK	US32D	RO
1 Door Stop	481	US26D	RO
1 Threshold	151 A x DOW x MS & ES25		PE
1 Gasketing (Set)	S88 BL x DOW x DOH		PE
1 Automatic Door Bottom	434 APKL x DOW		PE

Existing frame to remain

The general contractor shall verify that all new hardware will work with existing frame preps

Set: 25 – Classroom

Doors: 148

3 Hinge	T4A3786 4-1/2" x 4-1/2"	US26D	MK
1 Classroom Lockset	21 8237 LNL x DG1 x MK	US26D	SA
1 Closer	351 O	EN	SA
1 Kickplate	K1050 8" x 2" LDW 4BE CSK	US32D	RO
1 Overhead Stop	69XS x 90 deg	US26D	SA
3 Silencer	608		RO

Existing frame to remain

The general contractor shall verify that all new hardware will work with existing frame preps

Set: 26 – Closet

Doors: 149