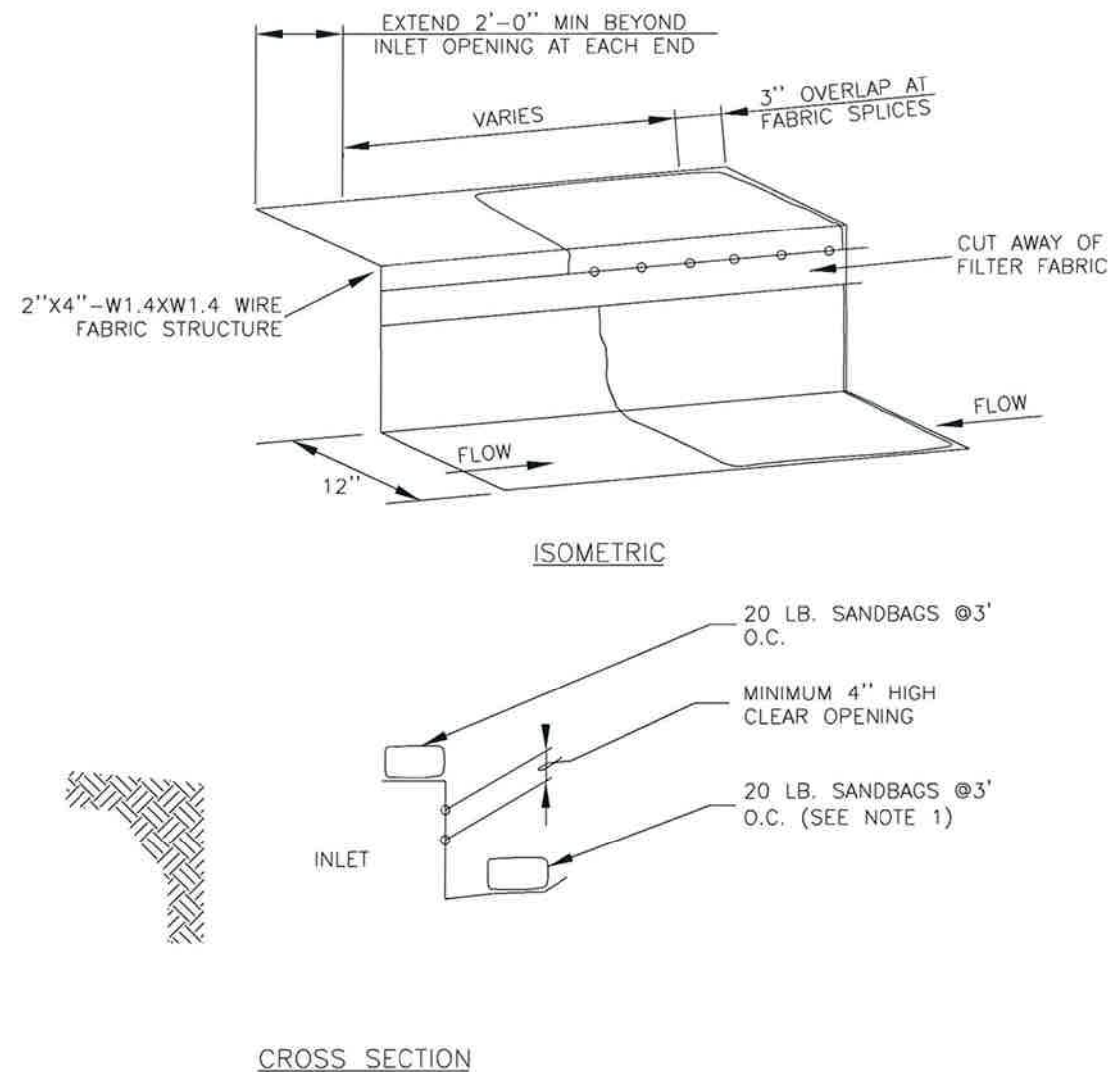


- NOTES:**
1. STEEL POSTS WHICH SUPPORT THE SILT FENCE SHALL BE INSTALLED ON A SLIGHT ANGLE TOWARD THE ANTICIPATED RUNOFF SOURCE. POST MUST BE EMBEDDED A MIN. OF ONE (1') FOOT.
  2. THE TOE OF THE SILT FENCE SHALL BE TRENCHED IN WITH A SPADE OR MECHANICAL TRENCHER, SO THAT THE DOWNSLOPE FACE OF THE TRENCH IS FLAT AND PERPENDICULAR TO THE LINE OF FLOW. WHERE FENCE CANNOT BE TRENCHED IN (E.G. PAVEMENT) WEIGHT FABRIC FLAP WITH WASHED GRAVEL ON UPHILL SIDE TO PREVENT FLOW UNDER FENCE.
  3. THE TRENCH MUST BE A MINIMUM OF 6 INCHES DEEP AND 6 INCHES WIDE TO ALLOW FOR THE SILT FENCE FABRIC TO BE LAID IN THE GROUND AND BACKFILLED WITH COMPACTED MATERIAL.
  4. SILT FENCE SHALL BE SECURELY FASTENED TO EACH STEEL SUPPORT POST OR TO WOVEN WIRE, WHICH IN TURN IS SECURELY FASTENED TO THE STEEL FENCE POSTS.
  5. INSPECTION SHALL BE MADE WEEKLY OR AFTER EACH RAINFALL EVENT AND REPAIR OR REPLACEMENT SHALL BE MADE PROMPTLY AS NEEDED.
  6. SILT FENCE SHALL BE REMOVED WHEN THE SITE IS COMPLETELY STABILIZED SO AS NOT TO BLOCK OR IMPEDE STORM FLOW OR DRAINAGE.
  7. ACCUMULATED SILT SHALL BE REMOVED WHEN IT REACHES A DEPTH OF 6 INCHES. THE SILT SHALL BE DISPOSED OF IN AN APPROVED SITE AND IN SUCH A MANNER AS TO NOT CONTRIBUTE TO ADDITIONAL SILTATION.
  8. SILT FENCE SHALL BE REMOVED AS SOON AS THE SOURCE OF SEDIMENT IS STABILIZED

RECORD SIGNED COPY ON FILE AT PUBLIC WORKS  APPROVED  03-25-11  DATE  THE ARCHITECT/ENGINEER ASSUMES RESPONSIBILITY FOR THE APPROPRIATE USE OF THIS DETAIL. (NOT TO SCALE)	<h1 style="margin: 0;">CITY OF ROUND ROCK</h1>  <h2 style="margin: 0;">SILT FENCE DETAIL</h2>	DRAWING NO: EC-10  
---	---	------------------------------



- NOTES:**
1. WHERE MINIMUM CLEARANCES CAUSE TRAFFIC TO DRIVE IN THE GUTTER, THE CONTRACTOR MAY SUBSTITUTE A 1" X 4" BOARD SECURED WITH CONCRETE NAILS 3' O.C. NAILED INTO THE GUTTER IN LIEU OF SANDBAGS TO HOLD THE FILTER DIKE IN PLACE. UPON REMOVAL, CLEAN ANY DIRT/DEBRIS FROM NAILING LOCATIONS, APPLY CHEMICAL SANDING AGENT AND APPLY NON-SHRINK GROUT FLUSH WITH SURFACE OF GUTTER.
  2. A SECTION OF FILTER FABRIC SHALL BE REMOVED AS SHOWN ON THIS DETAIL OR AS DIRECTED BY THE ENGINEER OR DESIGNATED REPRESENTATIVE. FABRIC MUST BE SECURED TO WIRE BACKING WITH CLIPS OR HOG RINGS AT THIS LOCATION.
  3. DAILY INSPECTION SHALL BE MADE BY THE CONTRACTOR AND SILT ACCUMULATION MUST BE REMOVED WHEN DEPTH REACHES 2".
  4. CONTRACTOR SHALL MONITOR THE PERFORMANCE OF INLET PROTECTION DURING EACH RAINFALL EVENT AND IMMEDIATELY REMOVE THE INLET PROTECTIONS IF THE STORM-WATER BEGINS TO OVERTOP THE CURB.
  5. INLET PROTECTIONS SHALL BE REMOVED AS SOON AS THE SOURCE OF SEDIMENT IS STABILIZED.

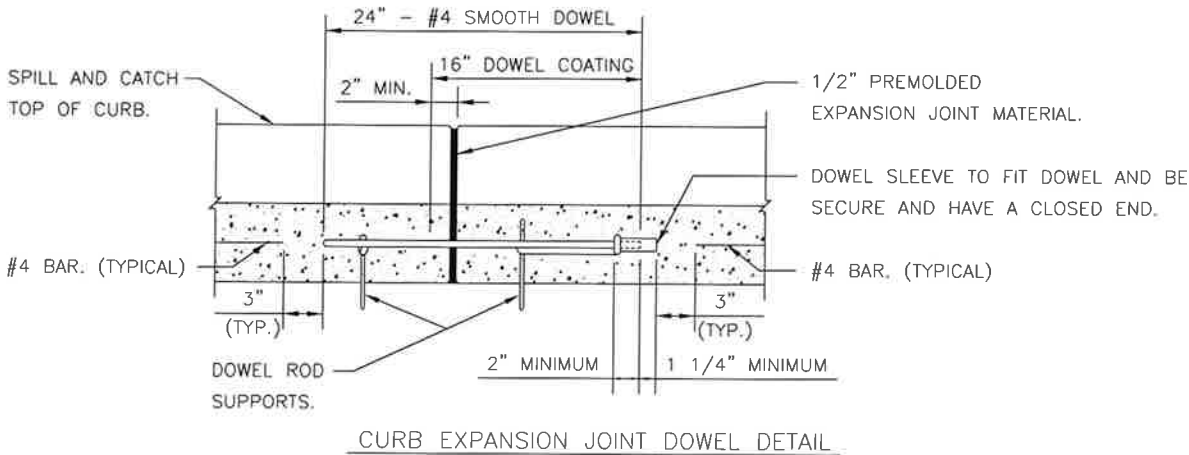
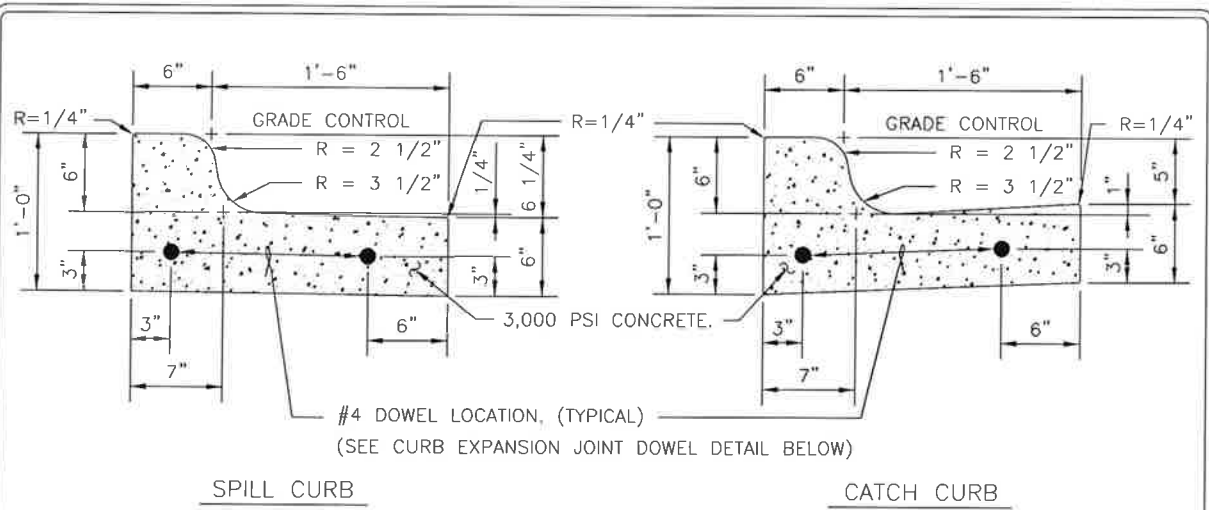
RECORD SIGNED COPY ON FILE AT PUBLIC WORKS  APPROVED  03-25-11  DATE  THE ARCHITECT/ENGINEER ASSUMES RESPONSIBILITY FOR THE APPROPRIATE USE OF THIS DETAIL. (NOT TO SCALE)	<h1 style="margin: 0;">CITY OF ROUND ROCK</h1>  <h2 style="margin: 0;">CURB INLET PROTECTION DETAIL</h2>	DRAWING NO: EC-14  
---	--	------------------------------

**PEPPER ROCK PARK PARKING LOT**  
 BRUSHY CREEK MUD  
 16318 GREAT OAKS DR.  
 ROUND ROCK, TX 78681



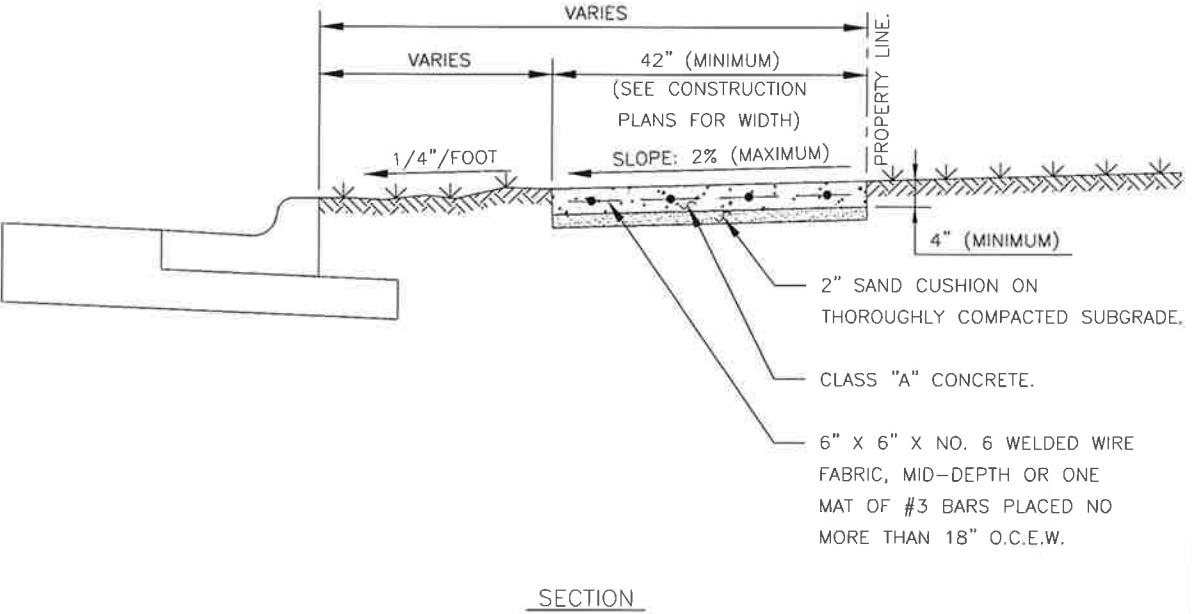
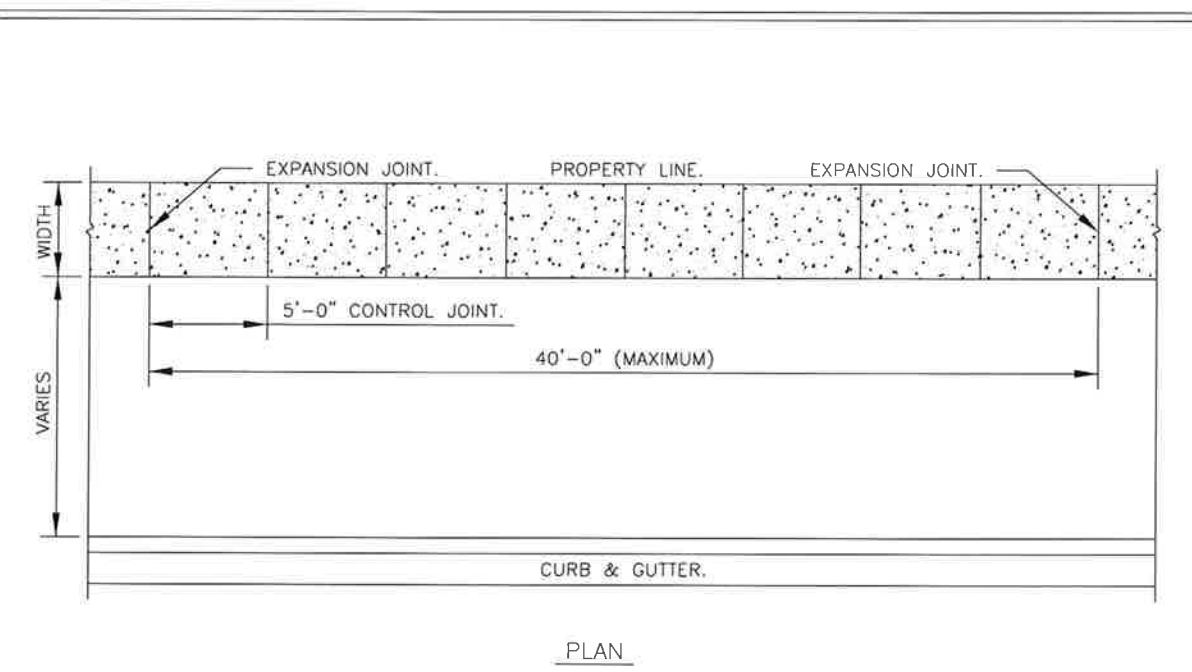
**HALFF**  
 TEXAS REGISTERED  
 ENGINEERING FIRM F-312  
 TWO SIERRA WAY, SUITE 105  
 GEORGETOWN, TEXAS 78626-7574  
 TEL (512) 942-6232  
 FAX (512) 869-0089

Project No: AV0 * 29891	
Issued: _____	
Revisions:	Description:
No.	Date
Drawn by: NJH	
Checked by: NSS	
Sheet Title	
STANDARD DETAILS	
SD1.03	
Sheet Number	



- NOTES:**
1. ALL WORK AND MATERIAL SHALL CONFORM TO ASTM A615, A615M, C309 AND D1752. BROOM FINISH EXPOSED SURFACE.
  2. CONTROL JOINT SPACING SHALL NOT EXCEED 10'-0".
  3. EXPANSION JOINTS AS PER STANDARD ASTM D-1752.
  4. EXPANSION JOINT INTERVALS NOT TO EXCEED 40'-0" FOR ALL CURBS AND CONSTRUCTION METHODS.
  5. ALL CURBS SHALL HAVE A MINIMUM OF 4" OF COMPACTED FLEXIBLE BASE BETWEEN BOTTOM OF CURB AND TOP SUBGRADE THAT SHALL EXTEND A MINIMUM OF 18" BEHIND BACK OF CURB. TOTAL DEPTH OF FLEXIBLE BASE UNDER AND BEHIND CURB SHALL BE: (TOTAL DEPTH OF FLEXIBLE BASE) LESS (6-INCHES).
  6. ALL CURBS SHALL CONFORM TO THESE DETAILS INDEPENDANT OF THE CONSTRUCTION METHODS USED.

APPROVED	<b>CITY OF ROUND ROCK</b> SPILL AND CATCH CURB DETAIL (WITH CURB EXPANSION JOINT DOWEL DETAIL)	DRAWING NO: ST-05	
DATE			
THE ARCHITECT/ENGINEER ASSUMES RESPONSIBILITY FOR THE APPROPRIATE USE OF THIS DETAIL.			



RECORD SIGNED COPY ON FILE AT PUBLIC WORKS	<b>CITY OF ROUND ROCK</b> SIDEWALK DETAIL	DRAWING NO: ST-01	
APPROVED			
07-11-06			
DATE			
THE ARCHITECT/ENGINEER ASSUMES RESPONSIBILITY FOR THE APPROPRIATE USE OF THIS DETAIL.			

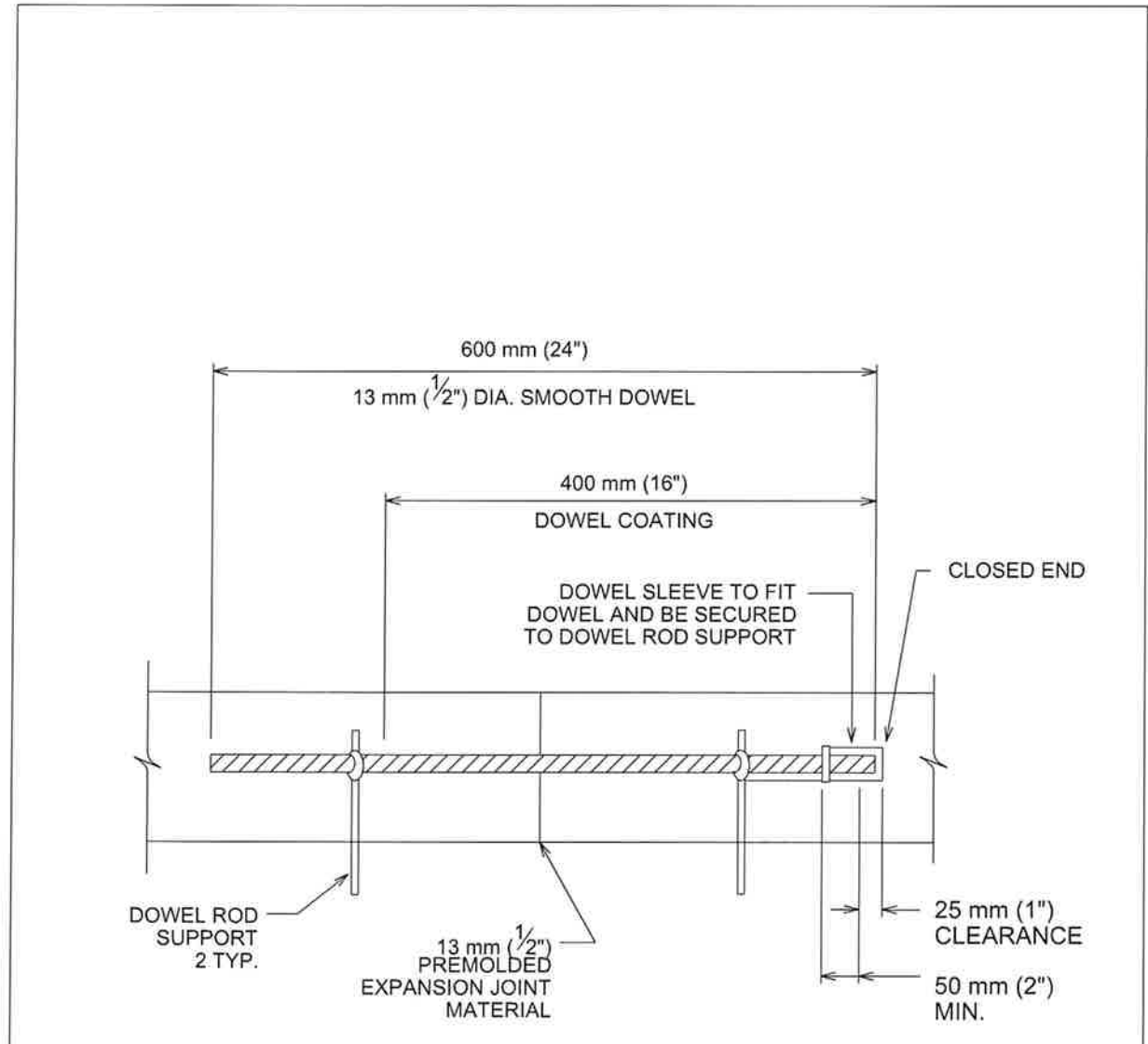
**PEPPER ROCK PARK  
PARKING LOT**  
 BRUSHY CREEK MUD  
 16318 GREAT OAKS DR.  
 ROUND ROCK, TX 78681



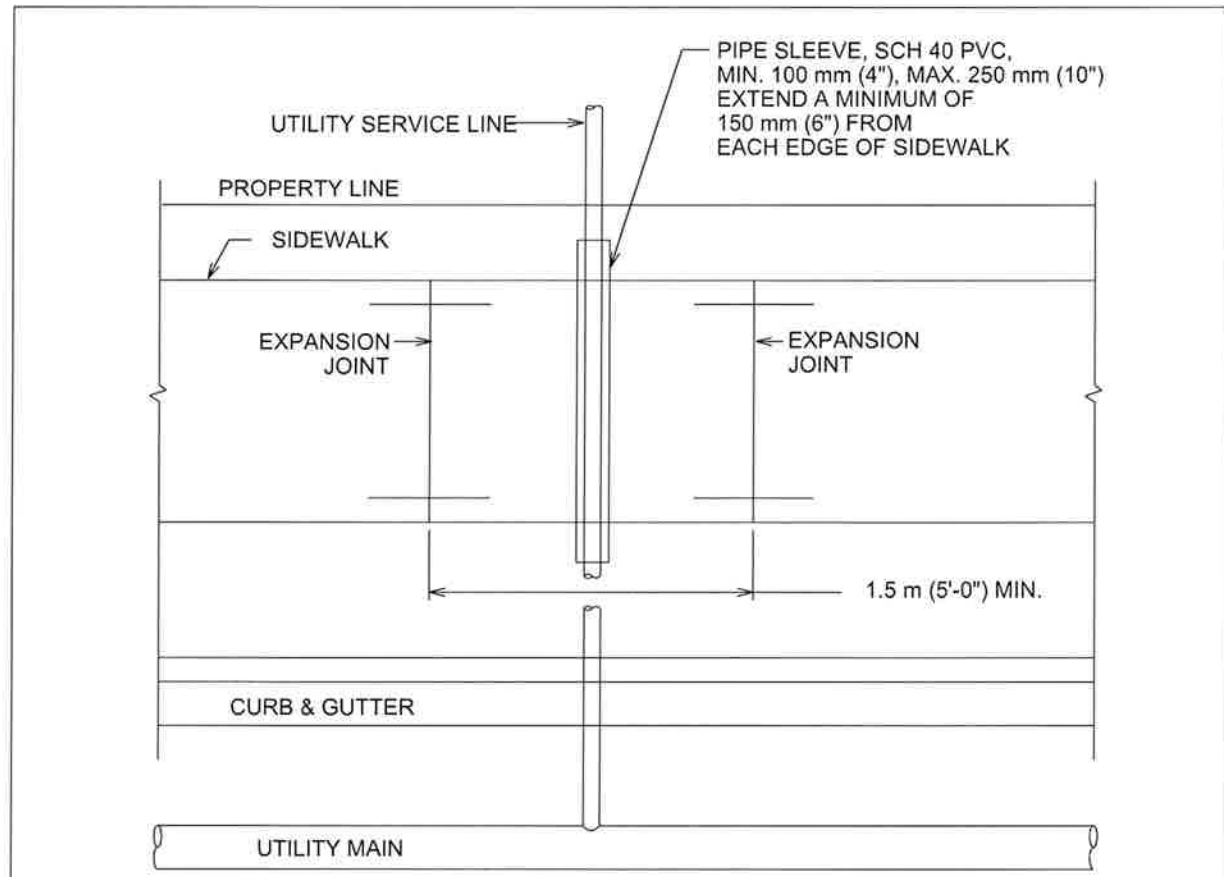
**HALFF**  
 TEXAS REGISTERED ENGINEERING FIRM F-312  
 TWO SIERRA WAY, SUITE 105  
 GEORGETOWN, TEXAS 78626-7574  
 TEL (512) 942-6232  
 FAX (512) 869-0089

Project No:	AVO - 29891	
Issued:		
Revisions:		
No.	Date	Description
Drawn by:	NJM	
Checked by:	NSS	
Sheet Title		
	STANDARD DETAILS	
	SD1.04	
	Sheet Number	

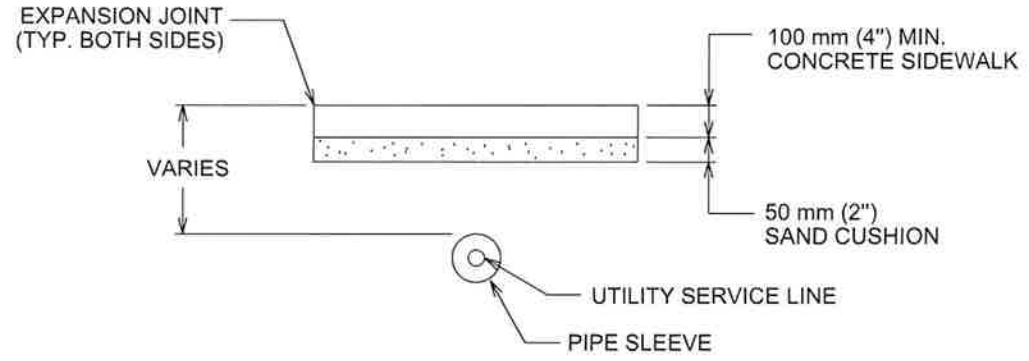
PEPPER ROCK PARK  
 PARKING LOT  
 BRUSHY CREEK MUD  
 16318 GREAT OAKS DR.  
 ROUND ROCK, TX 78681



**DOWEL DETAIL**



**SIDEWALK OVER UTILITY SERVICE LINE PLAN**



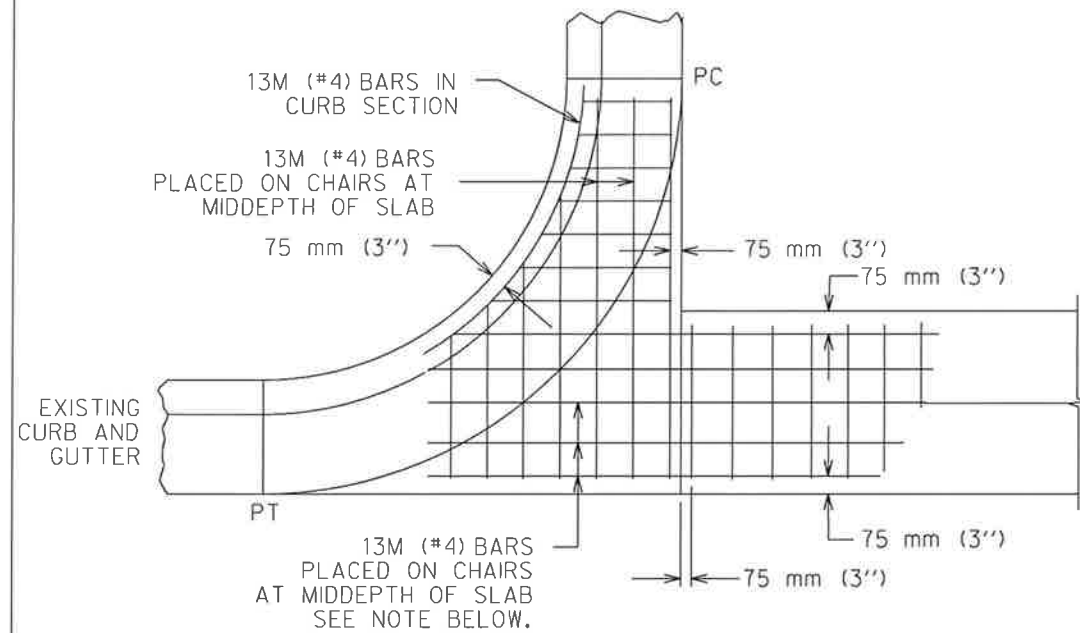
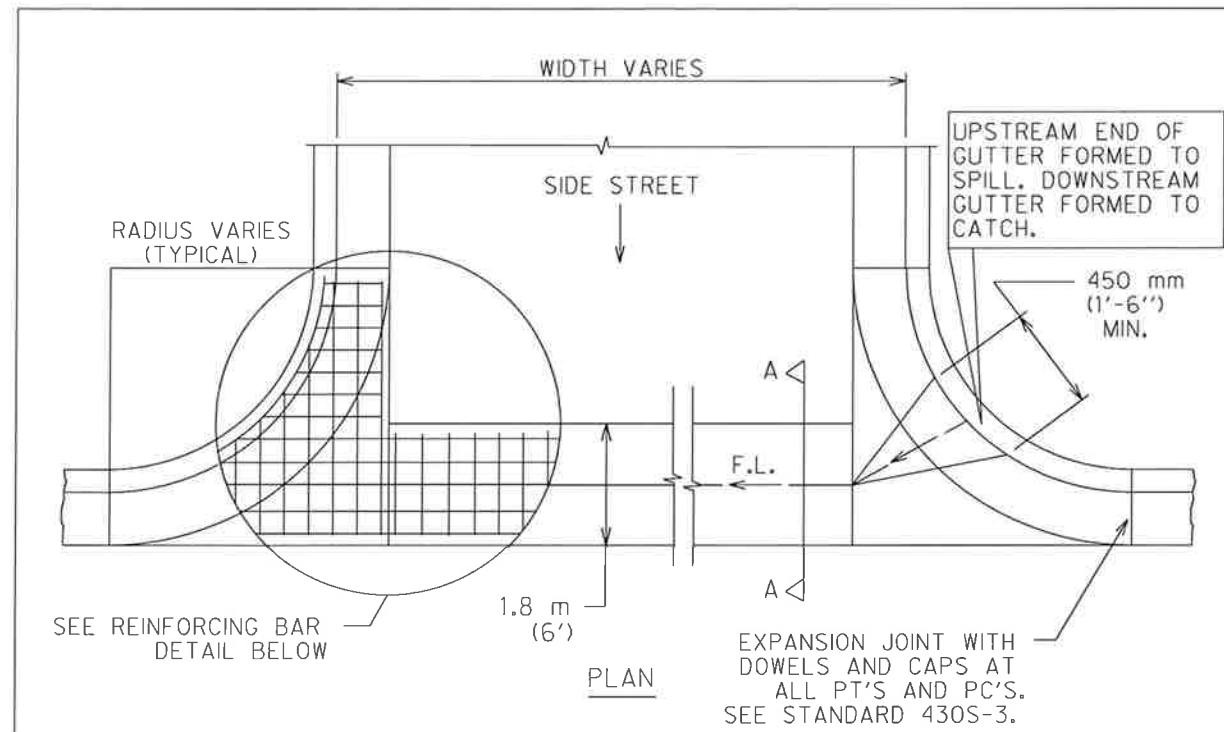
**SECTION OF SIDEWALK OVER UTILITY SERVICE LINES**

**NOTES:**  
 1. THIS STANDARD APPLIES TO THE INSTALLATION OF NEW UTILITIES OR UTILITIES BEING REPLACED BY A NEW LINE.  
 2. NO JOINTS IN UTILITY SERVICE PIPE TO BE LOCATED INSIDE PVC PIPE SLEEVE.

CITY OF AUSTIN DEPARTMENT OF PUBLIC WORKS		SIDEWALK	
RECORD COPY SIGNED BY BILL GARDNER	03/26/08 ADOPTED	THE ARCHITECT/ENGINEER ASSUMES RESPONSIBILITY FOR APPROPRIATE USE OF THIS STANDARD.	STANDARD NO. <b>432S-1</b> 2 OF 3

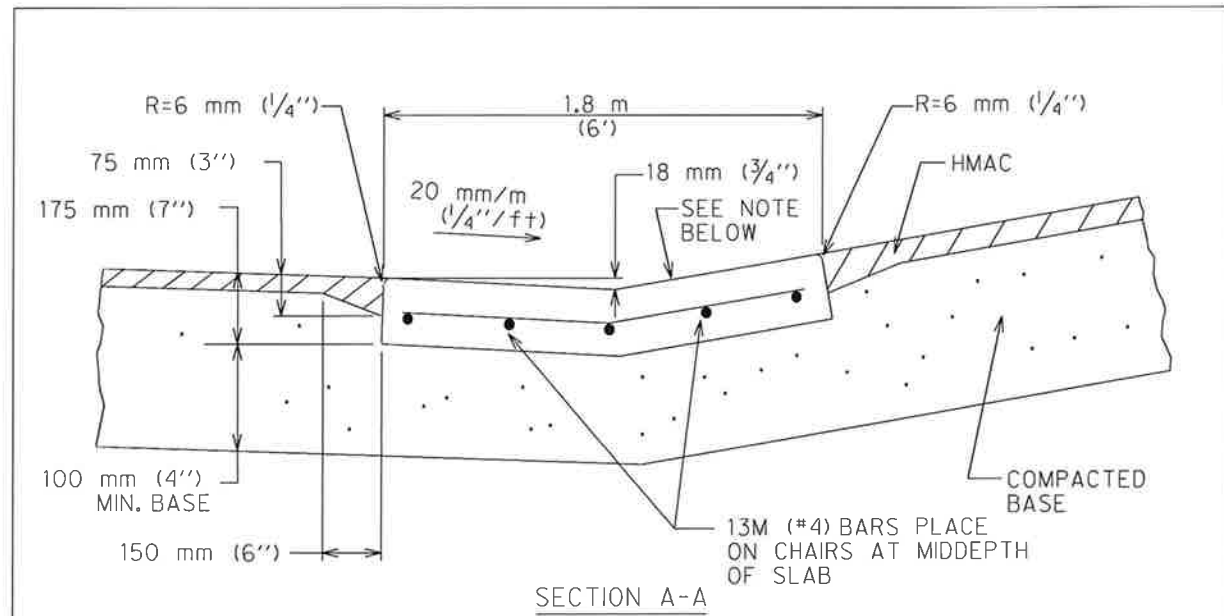
CITY OF AUSTIN DEPARTMENT OF PUBLIC WORKS		SIDEWALK	
RECORD COPY SIGNED BY BILL GARDNER	03/26/08 ADOPTED	THE ARCHITECT/ENGINEER ASSUMES RESPONSIBILITY FOR APPROPRIATE USE OF THIS STANDARD.	STANDARD NO. <b>432S-1</b> 3 OF 3

Project No: AV0 • 29891	
Issue:	
Revisions:	
No.	Date Description
Drawn by: NJH	
Checked by: NSS	
Sheet Title	
STANDARD DETAILS	
SD1.05	
Sheet Number	



NOTE:  
ALTERNATE 13M (#4) BARS PLACED ON CHAIRS AT MIDDEPTH OF SLAB TO BE CONTINUOUS ACROSS EXPANSION JOINT. BREAK BOND 150 mm (6") ON EACH SIDE OF EXPANSION JOINT.

CITY OF AUSTIN DEPARTMENT OF PUBLIC WORKS		CONCRETE VALLEY GUTTER	
RECORD COPY SIGNED BY BILL GARDNER	06/12/06 ADOPTED	THE ARCHITECT/ENGINEER ASSUMES RESPONSIBILITY FOR APPROPRIATE USE OF THIS STANDARD.	STANDARD NO. 436S-2 1 OF 2



NOTE:  
ADJUST SLOPE FROM 20 mm/m (1/4"/ft) MINIMUM TO THE SLOPE OF THE SIDE STREET.

- NOTES:
1. MATERIALS AND CONSTRUCTION METHODS SHALL CONFORM TO THE CITY OF AUSTIN STANDARD SPECIFICATIONS.
  2. CONCRETE FOR THE VALLEY GUTTER SHALL BE CLASS A, ITEM 403S, "CONCRETE FOR STRUCTURES".
  3. MONOLITHIC CURB AND GUTTER SHALL BE MEASURED BY PLAN QUANTITY PER SQUARE FEET AND PAID AS VALLEY GUTTER.
  4. THE UPSTREAM CURB MID POINT MUST BE AT OR LOWER THAN THE BEGINNING P.C. AND 0.5% MINIMUM HIGHER THAN THE OPPOSING MID POINT.
  5. ALLOWABLE CONSTRUCTION JOINT AT THE CENTER LINE WHEN TRAFFIC FLOW MUST BE MAINTAINED, CONSTRUCTED AS A CONTROL JOINT.

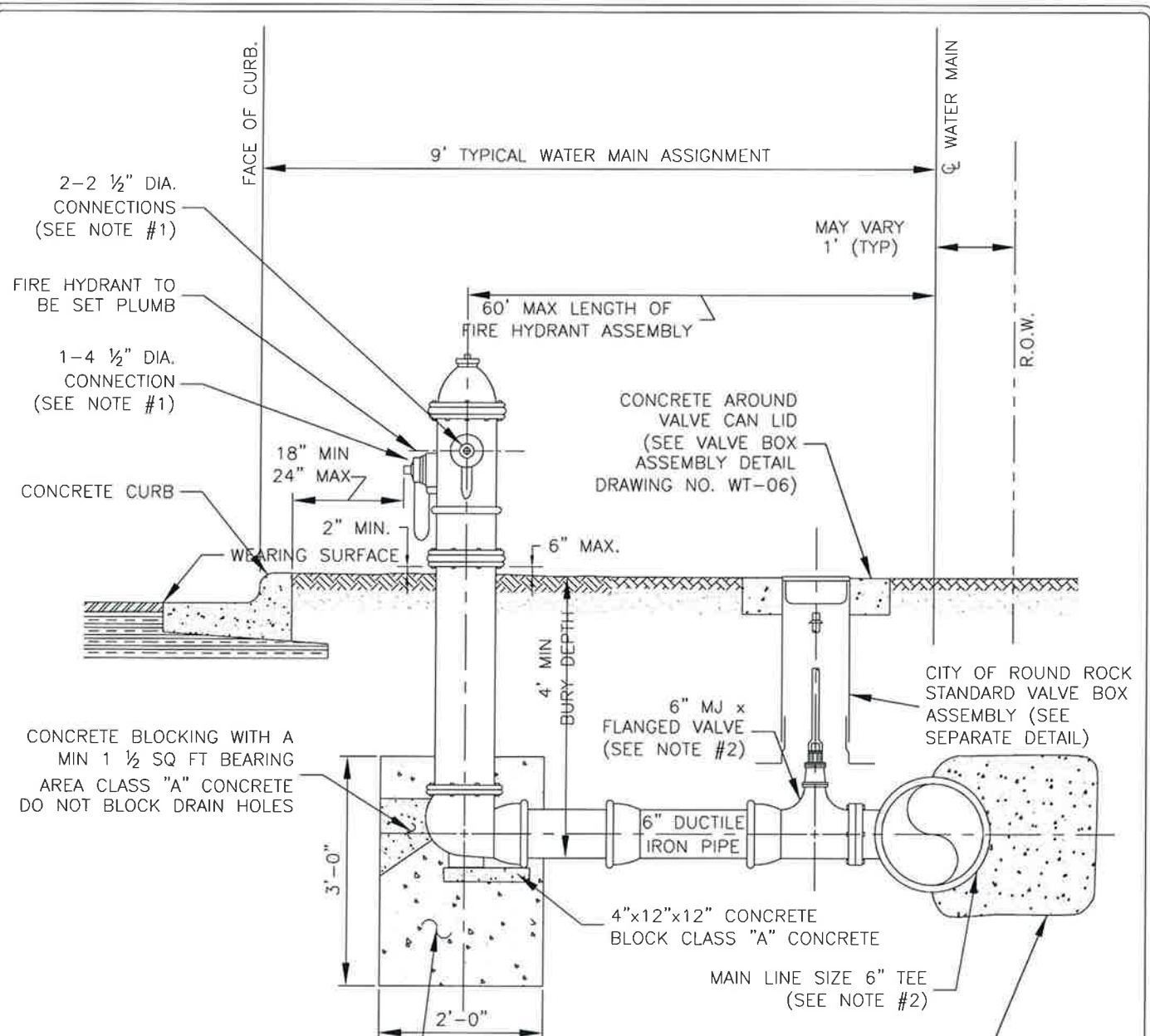
CITY OF AUSTIN DEPARTMENT OF PUBLIC WORKS		CONCRETE VALLEY GUTTER	
RECORD COPY SIGNED BY BILL GARDNER	06/12/06 ADOPTED	THE ARCHITECT/ENGINEER ASSUMES RESPONSIBILITY FOR APPROPRIATE USE OF THIS STANDARD.	STANDARD NO. 436S-2 2 OF 2

PEPPER ROCK PARK  
PARKING LOT  
BRUSHY CREEK MUD  
16318 GREAT OAKS DR.  
ROUND ROCK, TX 78681



**HALFF**  
TEXAS REGISTERED  
ENGINEERING FIRM F-312  
TWO SIERRA WAY, SUITE 105  
GEORGETOWN, TEXAS 78626-7574  
TEL (612) 942-6232  
FAX (612) 969-0089

Project No: AV0 * 29891		
Issues:		
Revisions:		
No.	Date	Description
Drawn by: NJH		
Checked by: NSS		
Sheet Title		
STANDARD DETAILS		
SD1.06		
Sheet Number		



CRUSHED STONE OR GRAVEL SHALL BE PLACED AROUND THE BOTTOM OF THE HYDRANT FOR RADIUS OF AT LEAST 12" AND EXTENDING AT LEAST 12" ABOVE THE OUTLET DO NOT BLOCK DRAIN HOLES

**NOTES:**

1. THREADS ON OUTLET NOZZLES SHALL BE NATIONAL STANDARD THREAD.
2. TEE MAY HAVE FLANGED OUTLET FOR M.J. X FLANGED GATE VALVE OR, ANCHOR (SWIVEL) TEE MAY BE USED WITH M.J. X M.J. GATE VALVE.
3. A BLUE REFLECTIVE DELINEATOR OF TYPE APPROVED BY THE ENGINEER SHALL BE PLACED 2 TO 3 FEET OFFSET FROM THE CENTERLINE OF PAVED STREETS OR PAVED ACCESS WAYS, ON THE SIDE OF AND IN LINE WITH, ALL NEWLY INSTALLED FIRE HYDRANTS.

RECORD SIGNED COPY ON FILE AT PUBLIC WORKS APPROVED 04-01-10 DATE <small>THE ARCHITECT/ENGINEER ASSUMES RESPONSIBILITY FOR THE APPROPRIATE USE OF THIS DETAIL. (NOT TO SCALE)</small>	<h2 style="margin: 0;">CITY OF ROUND ROCK</h2> <p style="font-size: 24px; margin: 0;">FIRE HYDRANT ASSEMBLY DETAIL</p>	DRAWING NO: WT-05
--	--	----------------------

- NOTES:**  
**Per TCEQ - Edwards Aquifer Rules Technical Guidance on Best Management Practices Engineered Vegetative Filter Strips**  
 The general design goal is to produce uniform, shallow overland flow across the entire filter strip.
- (1) The filter strip should extend along the entire length of the contributing area and the slope should not exceed 20%. The minimum dimension of the filter strip (in the direction of flow) should be no less than 15 feet. The maximum width (in the direction of flow) of the contributing impervious area should not exceed 72 feet. For roadways with a vegetated strip along both sides the total width of the roadway should not exceed 144 feet (i.e., 72 feet draining to each side).
  - (2) The minimum vegetated cover for engineered strips is 80%.
  - (3) The area contributing runoff to a filter strip should be relatively flat so that the runoff is distributed evenly to the vegetated area without the use of a level spreader.
  - (4) The area to be used for the strip should be free of gullies or rills that can concentrate overland flow (Schueler, 1987).
  - (5) The top edge of the filter strip along the pavement will be designed to avoid the situation where runoff would travel along the top of the filter strip, rather than through it.
  - (6) Top edge of the filter strip should be level, otherwise runoff will tend to form a channel in the low spot. A level spreader should not be used to distribute runoff to an engineered filter strip.
  - (7) Filter strips should be landscaped after other portions of the project are completed.
  - (8) Contractor shall provide an analysis of the proposed seed mixture to the Engineer for approval prior to placement of seed in engineered vegetative strip (EVFS). Seedbed will be watered for establishment until engineered vegetative strip reaches 80% coverage, with the cost of water subsidiary to the line item cost for seeding of the EVFS.

**PEPPER ROCK PARK  
PARKING LOT**  
 BRUSHY CREEK MUD  
 16318 GREAT OAKS DR.  
 ROUND ROCK, TX 78681



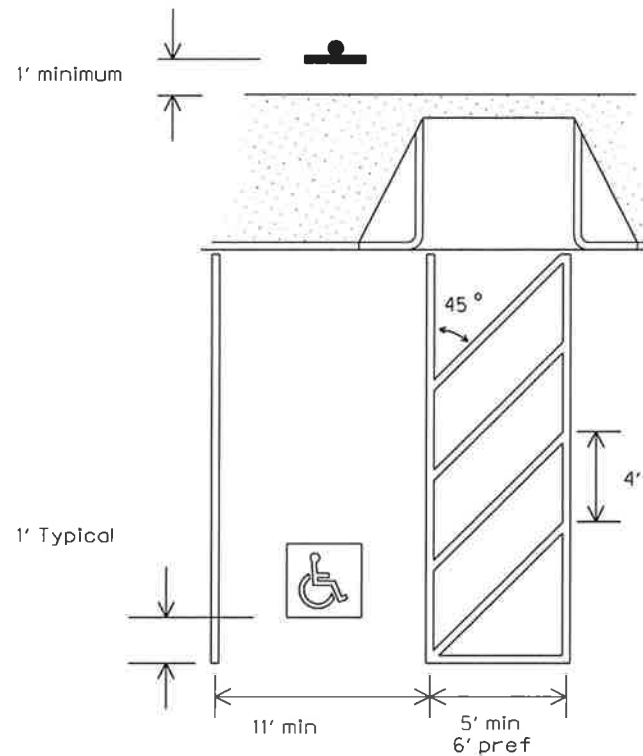
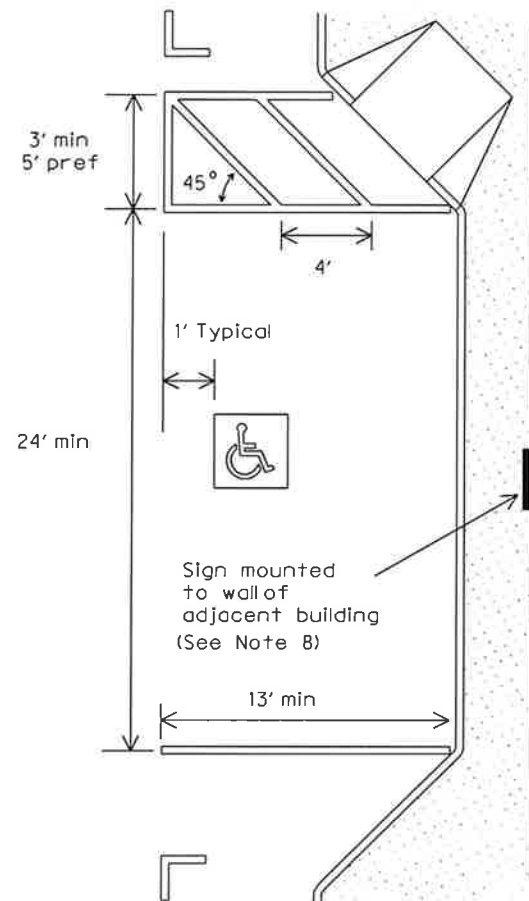
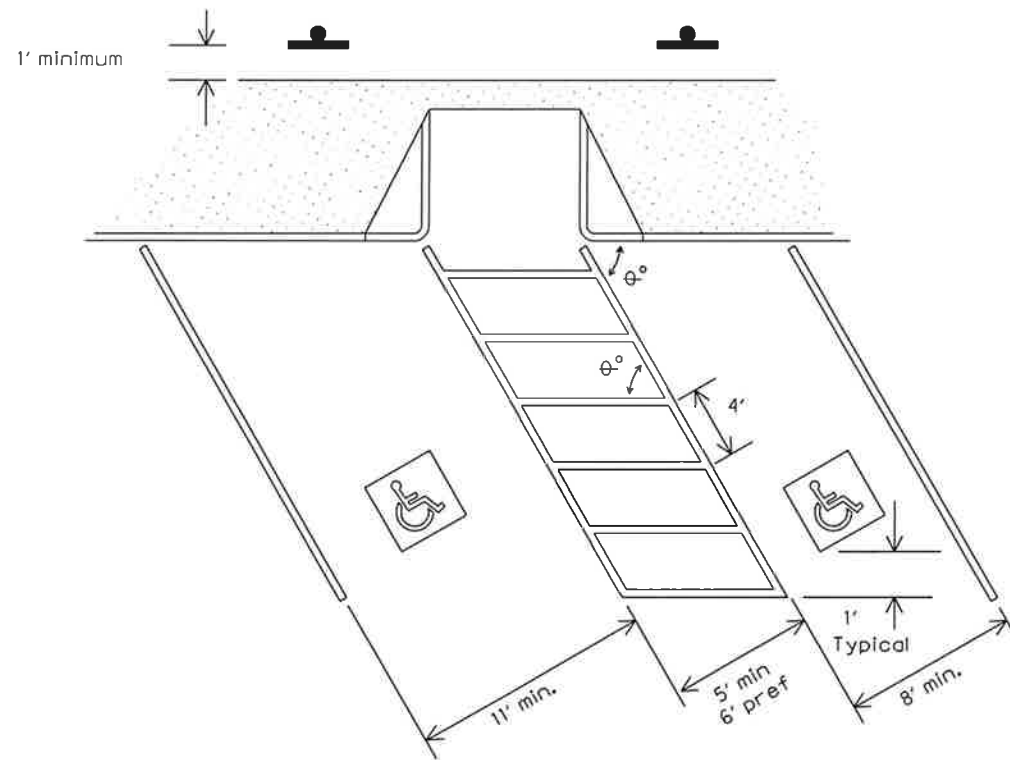
**HALFF**

TEXAS REGISTERED  
ENGINEERING FIRM F-312  
TWO SIERRA WAY, SUITE 105  
GEORGETOWN, TEXAS 78626-7574  
TEL (512) 942-6232  
FAX (512) 869-0089

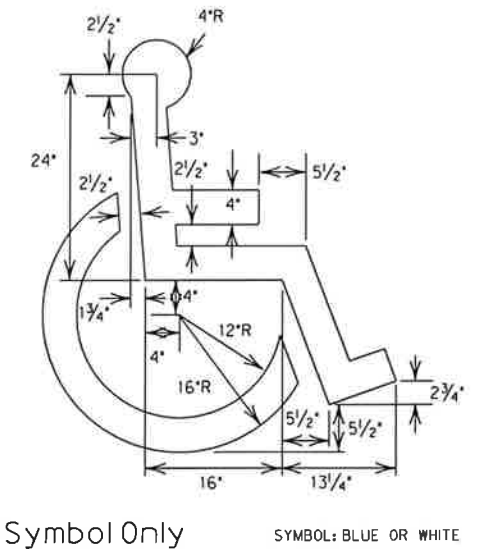
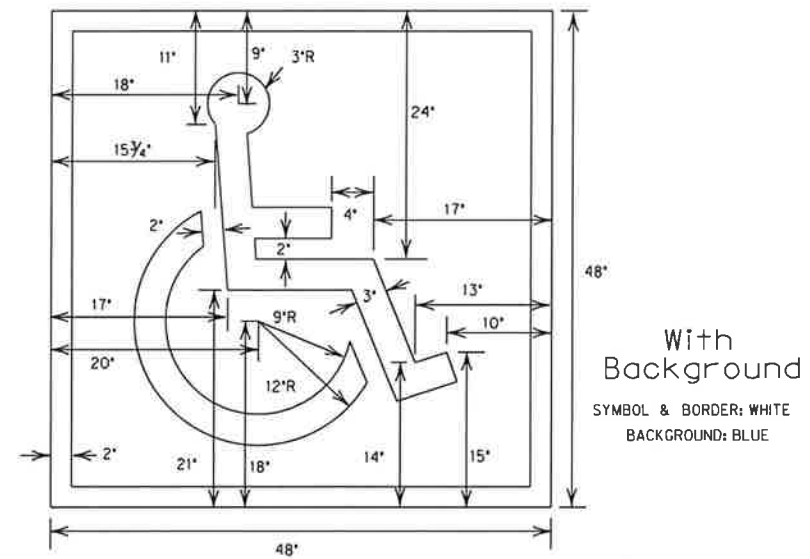
Project No: AV0 * 29891	
Issued:	
Revisions:	
No.	Description
Drawn by: NSH	
Checked by: HSS	
Sheet Title	
STANDARD DETAILS	
SD1.07	
Sheet Number	

DISCLAIMER: The use of this standard is governed by the "Texas Engineering Practice Act". No warranty of any kind is made by TxDOT for any purpose whatsoever. TxDOT assumes no responsibility for the conversion of this standard to other formats or for incorrect results or damages resulting from its use.

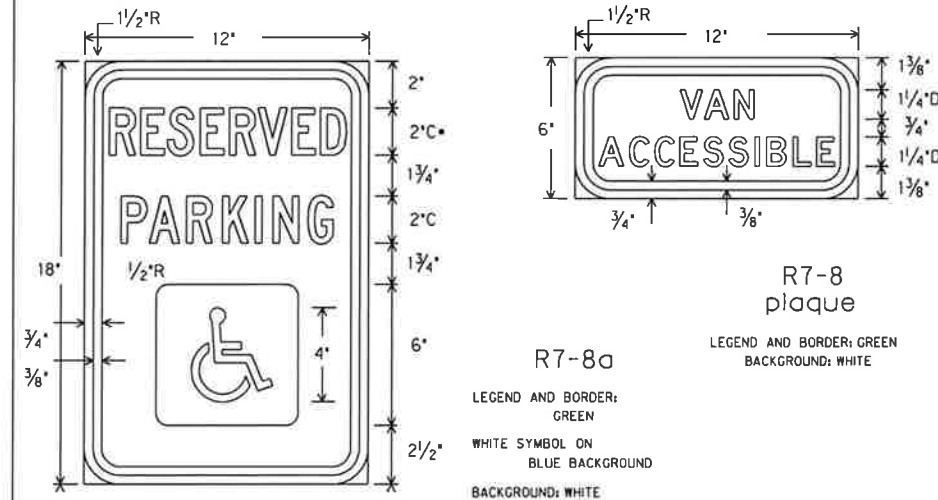
### TYPICAL ACCESSIBLE PARKING SPACE DIMENSIONS



### PAVEMENT MARKINGS



### HANDICAPPED PARKING SIGN



SPECIFICATION REFERENCE TABLE	
MATERIALS AND TESTS DIVISION SPECIFICATIONS	D-9-7110
ALUMINUM SIGN BLANKS	
REFLECTIVE SHEETING, TYPE C (HIGH SPECIFIC INTENSITY)	D-9-8300

#### GENERAL SIGN NOTES:

The Alphabets and lateral spacing between letters and numerals shall conform with the Texas "Manual on Uniform Traffic Control Devices for Streets and Highways", latest edition, and any approved changes thereto. Lateral spacing of text shall provide a balanced appearance. All materials shall conform to Department Specifications.

Legend shall be applied by screening process of black and/or transparent colored ink, cut-out black vinyl non-reflective decal sheeting and/or reflective sheeting or combination thereof. Background shall be white reflective sheeting (Type C).

Sign blanks shall be one piece 0.08 inch thick sheet aluminum alloy (Type A), unless otherwise noted elsewhere in the plans.

#### GENERAL NOTES:

- All parking space limit lines shall be 4" solid white lines.
- Aisle markings shown are examples only. Other methods to indicate a NO PARKING area are acceptable. Aisle markings shall be white.
- Dimensions of limit lines, aisle markings, and symbol (with or without background) may vary + 10%.
- Pavement marking symbols (with background):
  - are REQUIRED unless stated elsewhere in the plans,
  - should be placed toward the far end of the parking spaces so as to be visible to motorists in the travel lane,
  - may be painted or prefabricated material, and
  - shall be 30' x 30' minimum.
- With approval of the Engineer, prefabricated pavement marking symbols with background of other dimensions exceeding the 30' x 30' minimum may be used. Alternative designs shall include a proportion sized symbol of accessibility, and shall conform to the illustrated colors for background, symbol and border.
- An R7-8 sign:
  - shall be REQUIRED for each accessible parking space,
  - shall NOT be placed between two accessible parking spaces,
  - shall NOT be placed in a location that restricts movement of wheelchairs within the adjacent sidewalk, and
  - shall have a minimum mounting height of 7 feet. If mounted to wall or located so as not to be near pedestrian traffic minimum mounting height may be 7 feet.
- Post mounted signs should be placed approximately 1 foot (or greater) behind the curb to prevent damage from vehicle overhang.
- Signs may be mounted directly to an adjacent wall of a building when post mounting is impractical.



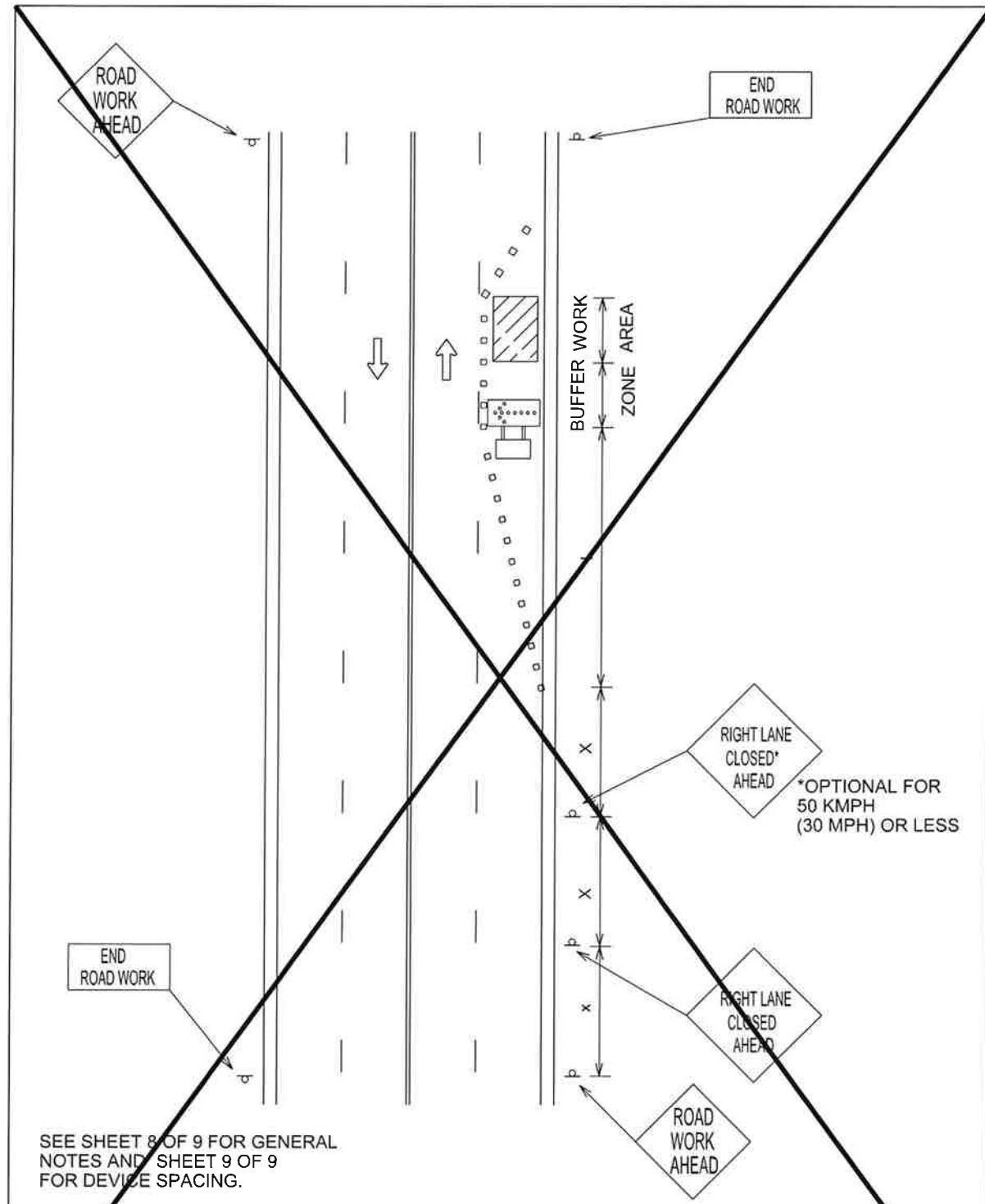
Texas Department of Transportation  
Traffic Operations Division

### PAVEMENT MARKINGS AND SIGNING FOR ACCESSIBLE PARKING

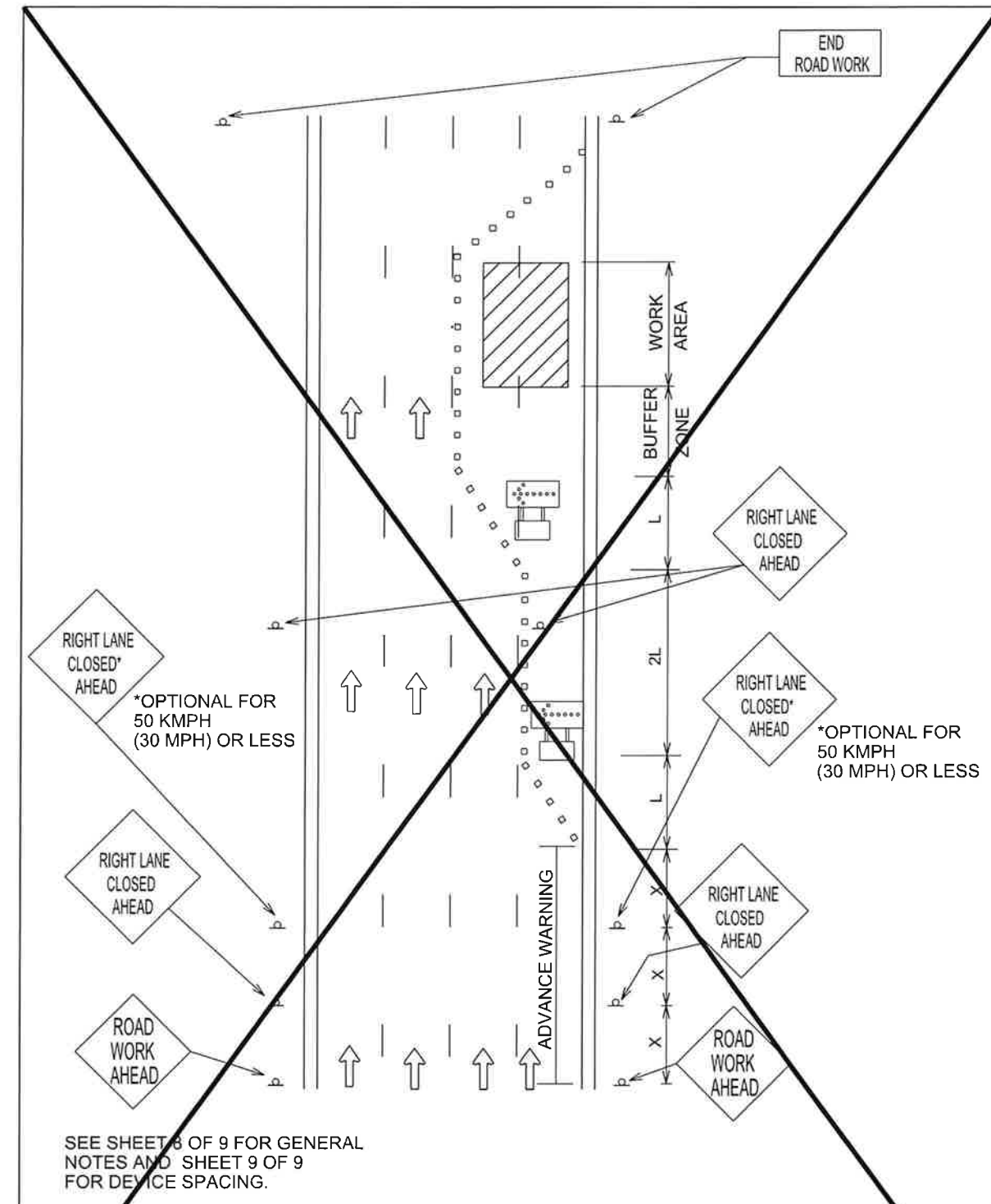
PM(AP)-98

© TxDOT August 1995		DN: TxDOT	EK: TxDOT	DW: TxDOT	EK: TxDOT
4-98	REVISIONS	CONT	SECT	JOB	HIGHWAY
		DIST		COUNTY	SHEET NO.
					SD1.08

DATE:  
FILE:



CITY OF AUSTIN DEPARTMENT OF PUBLIC WORKS		ARTERIAL ONE LANE CLOSURE	
RECORD COPY SIGNED BY KERI JUAREZ	01/04/11 ADOPTED	THE ARCHITECT/ENGINEER ASSUMES RESPONSIBILITY FOR APPROPRIATE USE OF THIS STANDARD.	STANDARD NO. <b>804S-1</b> 1 OF 9



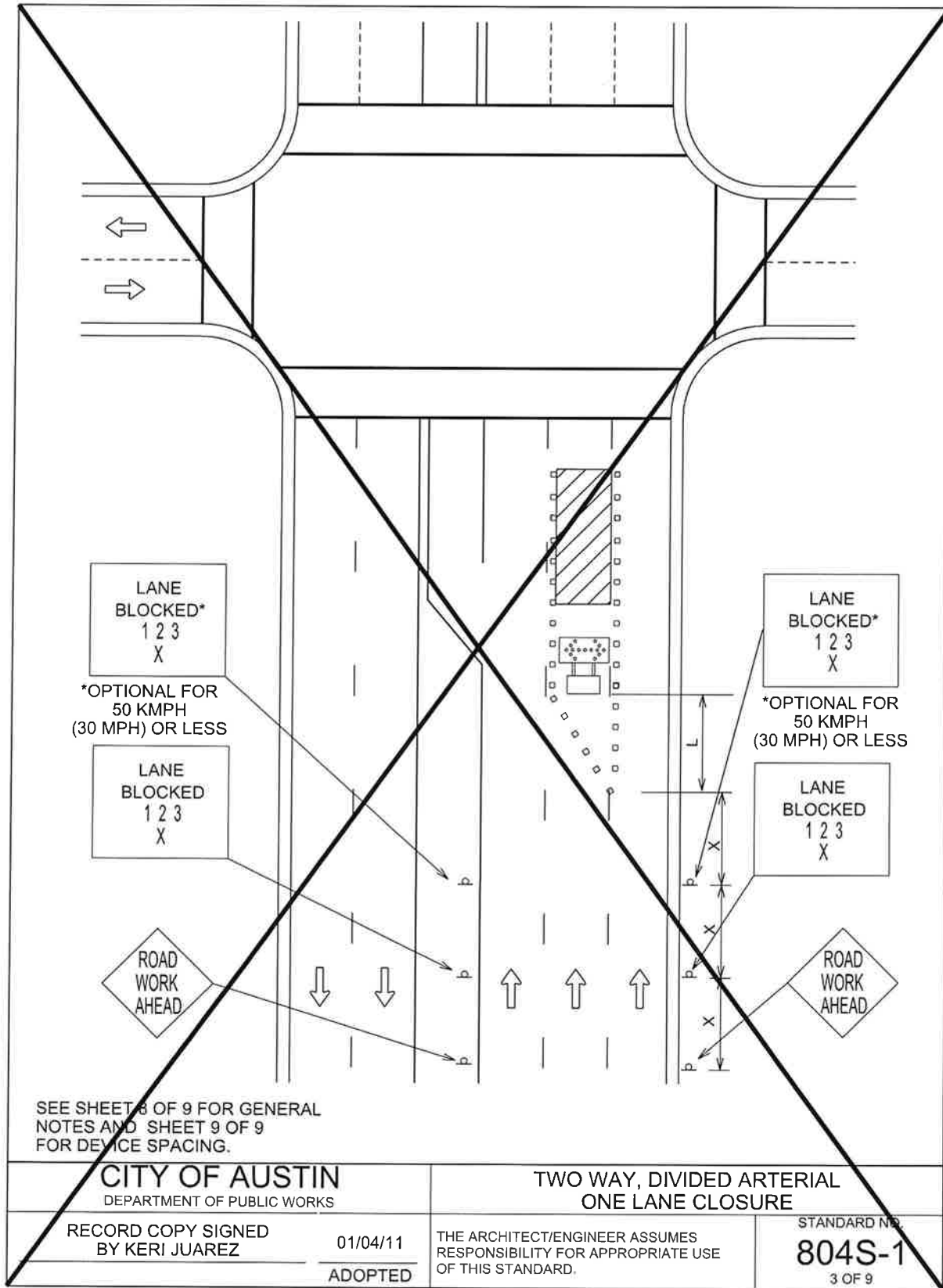
CITY OF AUSTIN DEPARTMENT OF PUBLIC WORKS		ONE WAY ARTERIAL TWO-LANE CLOSURE	
RECORD COPY SIGNED BY KERI JUAREZ	01/04/11 ADOPTED	THE ARCHITECT/ENGINEER ASSUMES RESPONSIBILITY FOR APPROPRIATE USE OF THIS STANDARD.	STANDARD NO. <b>804S-1</b> 2 OF 9

**PEPPER ROCK PARK  
PARKING LOT**  
BRUSHY CREEK MUD  
16318 GREAT OAKS DR.  
ROUND ROCK, TX 78681



**HALFF**  
TEXAS REGISTERED  
ENGINEERING FIRM F-312  
TWO SIERRA WAY, SUITE 105  
GEORGETOWN, TEXAS 78626-7574  
TEL (512) 842-6232  
FAX (512) 868-0089

Project No: AV0 * 29891		
Issues:		
Revisions:		
No.	Date	Description
Drawn by: NJS		
Checked by: NSS		
Sheet Title		
STANDARD DETAILS		
SD1.09		
Sheet Number		



CITY OF AUSTIN  
DEPARTMENT OF PUBLIC WORKS

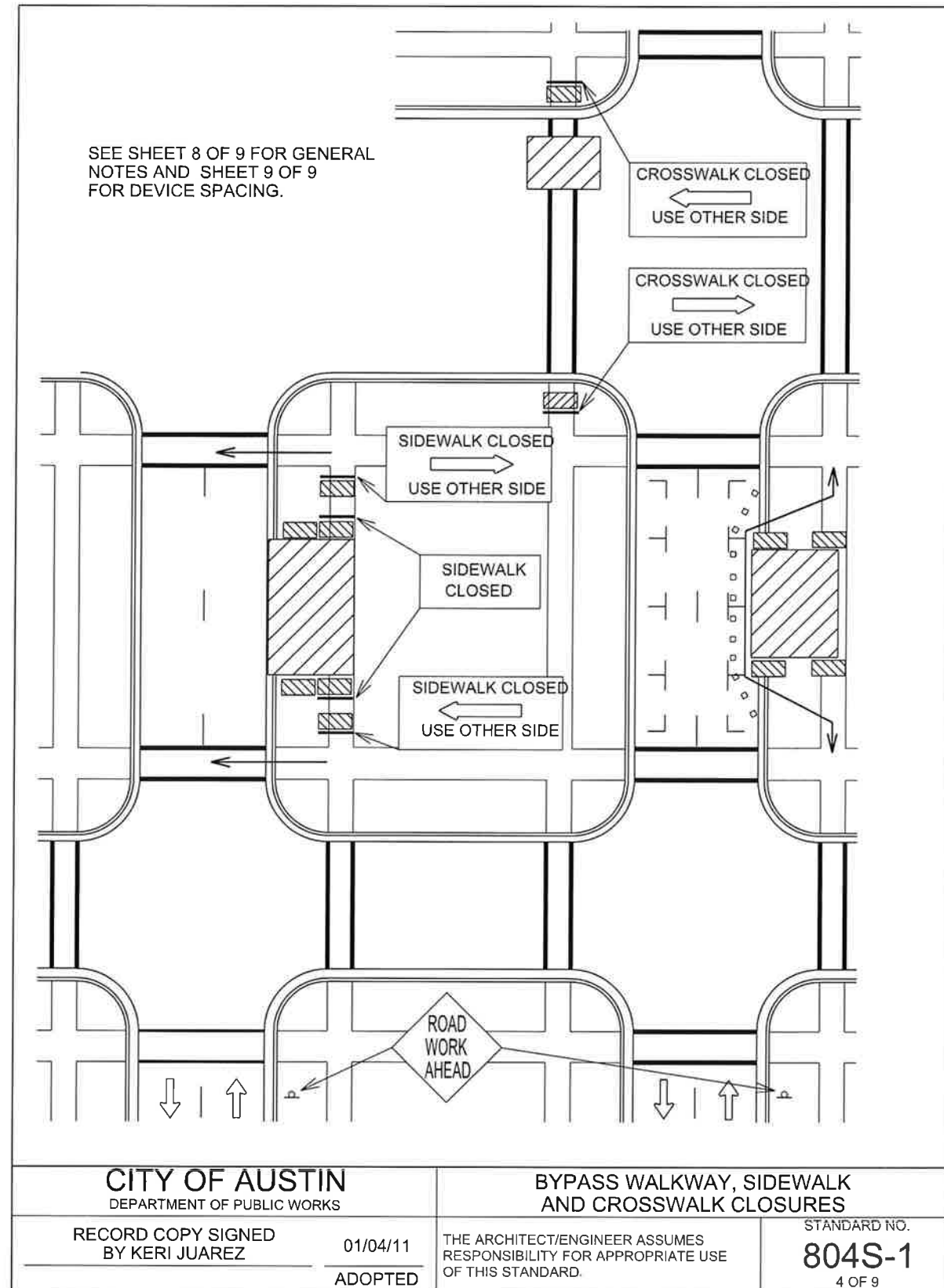
TWO WAY, DIVIDED ARTERIAL  
ONE LANE CLOSURE

RECORD COPY SIGNED  
BY KERI JUAREZ

01/04/11  
ADOPTED

THE ARCHITECT/ENGINEER ASSUMES  
RESPONSIBILITY FOR APPROPRIATE USE  
OF THIS STANDARD.

STANDARD NO.  
**804S-1**  
3 OF 9



CITY OF AUSTIN  
DEPARTMENT OF PUBLIC WORKS

BYPASS WALKWAY, SIDEWALK  
AND CROSSWALK CLOSURES

RECORD COPY SIGNED  
BY KERI JUAREZ

01/04/11  
ADOPTED

THE ARCHITECT/ENGINEER ASSUMES  
RESPONSIBILITY FOR APPROPRIATE USE  
OF THIS STANDARD.

STANDARD NO.  
**804S-1**  
4 OF 9

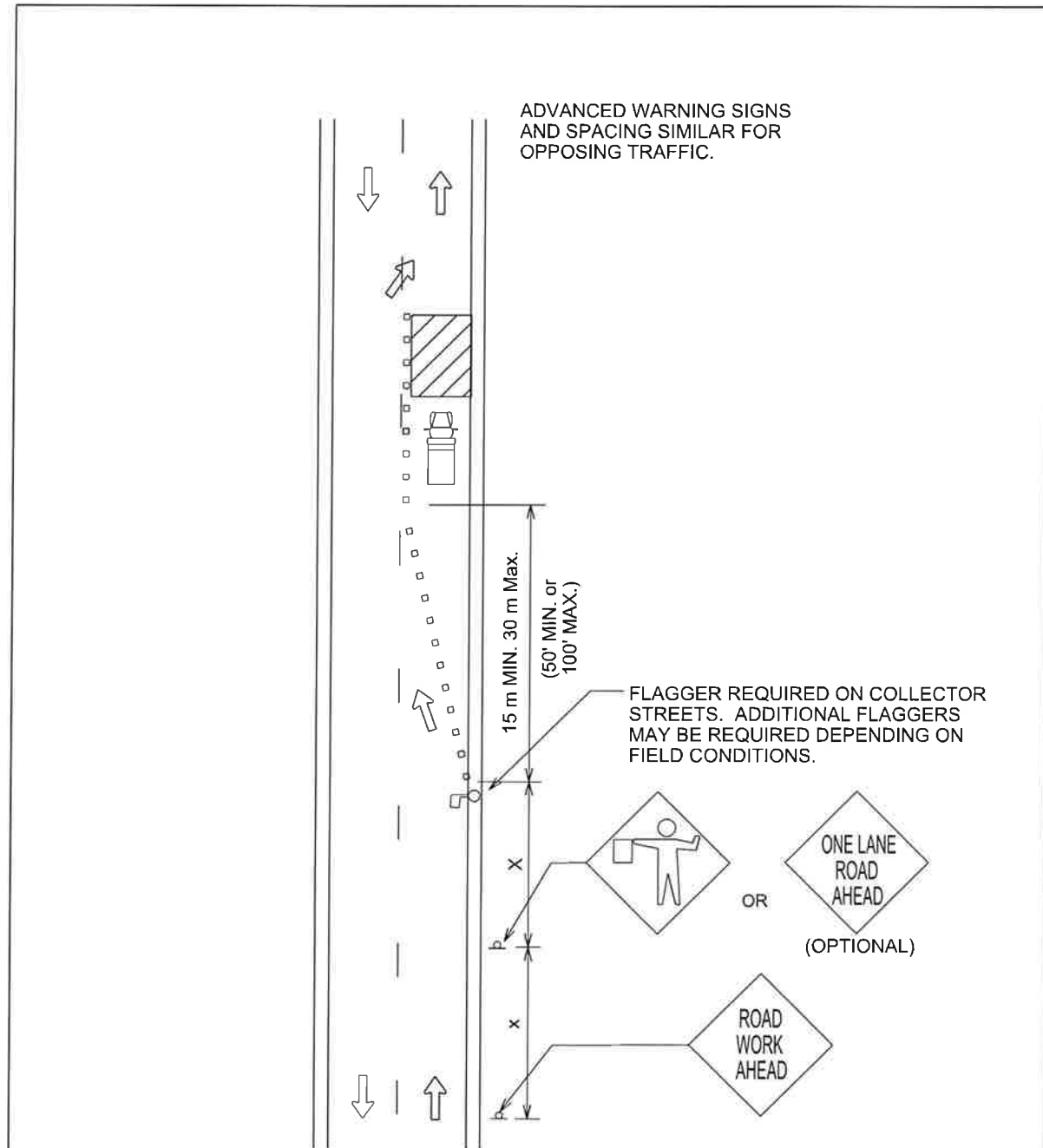
PEPPER ROCK PARK  
PARKING LOT  
BRUSHY CREEK MUD  
16318 GREAT OAKS DR.  
ROUND ROCK, TX 78681



**HALFF**  
TEXAS REGISTERED  
ENGINEERING FIRM F-312  
TWO SIERRA WAY, SUITE 105  
GEORGETOWN, TEXAS 78628-7574  
TEL (512) 942-5232  
FAX (512) 869-0089

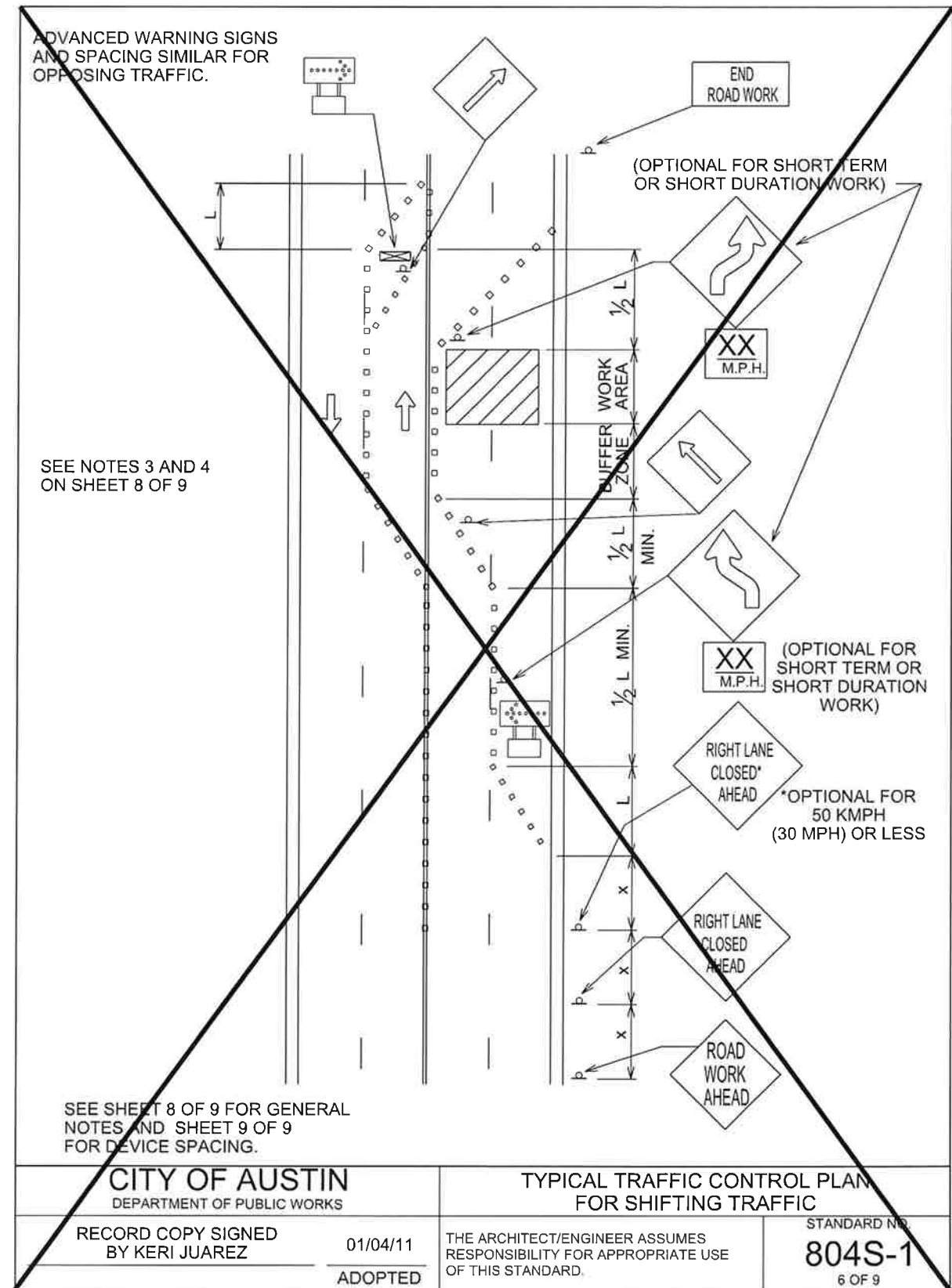
Project No: AV0 - 29891		
Issued:		
Revisions:		
No.	Date	Description
Drawn by: NJH		
Checked by: HSS		
Sheet Title		
STANDARD DETAILS		
SD1.10		
Sheet Number		





SEE SHEET 8 OF 9 FOR GENERAL NOTES AND SHEET 9 OF 9 FOR DEVICE SPACING.

<b>CITY OF AUSTIN</b> DEPARTMENT OF PUBLIC WORKS		<b>COLLECTOR/RESIDENTIAL LANE CLOSURES</b>	
RECORD COPY SIGNED BY KERI JUAREZ	01/04/11 ADOPTED	THE ARCHITECT/ENGINEER ASSUMES RESPONSIBILITY FOR APPROPRIATE USE OF THIS STANDARD.	STANDARD NO. <b>804S-1</b> 5 OF 9



SEE SHEET 8 OF 9 FOR GENERAL NOTES AND SHEET 9 OF 9 FOR DEVICE SPACING.

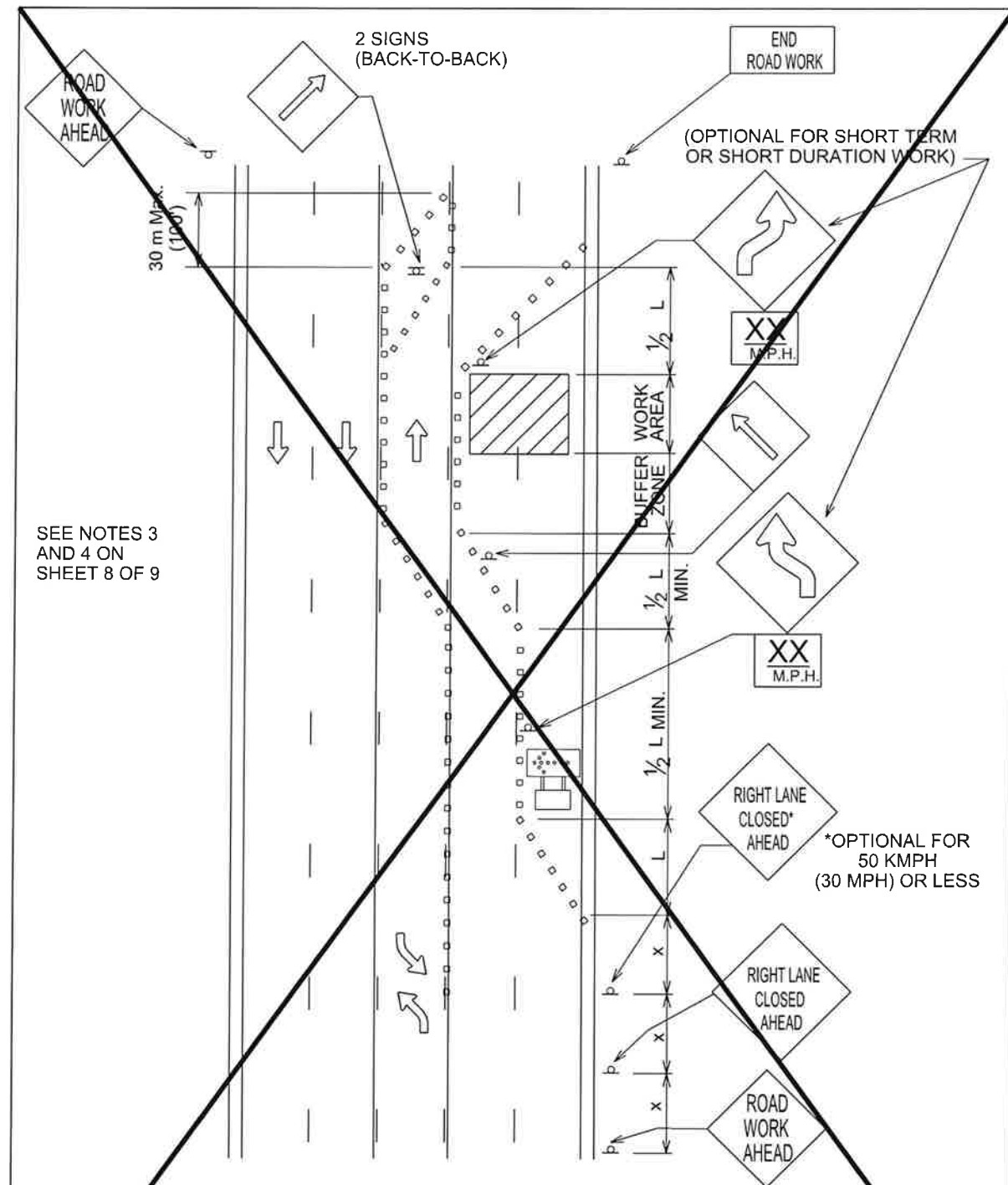
<b>CITY OF AUSTIN</b> DEPARTMENT OF PUBLIC WORKS		<b>TYPICAL TRAFFIC CONTROL PLAN FOR SHIFTING TRAFFIC</b>	
RECORD COPY SIGNED BY KERI JUAREZ	01/04/11 ADOPTED	THE ARCHITECT/ENGINEER ASSUMES RESPONSIBILITY FOR APPROPRIATE USE OF THIS STANDARD.	STANDARD NO. <b>804S-1</b> 6 OF 9

**PEPPER ROCK PARK PARKING LOT**  
BRUSHY CREEK MUD  
16318 GREAT OAKS DR.  
ROUND ROCK, TX 78681



**HALFF**  
TEXAS REGISTERED ENGINEERING FIRM F-312  
TWO SIERRA WAY, SUITE 105  
GEORGETOWN, TEXAS 78626-7574  
TEL (512) 942-6232  
FAX (512) 869-0089

Project No: AV0 * 29891		
Issued:		
Revisions:		
No.	Date	Description
Drawn by: NJS		
Checked by: NSS		
Sheet Title		
STANDARD DETAILS		
SD1.11		
Sheet Number		



SEE NOTES 3 AND 4 ON SHEET 8 OF 9

CITY OF AUSTIN  
DEPARTMENT OF PUBLIC WORKS

TYPICAL TRAFFIC CONTROL PLAN  
FOR SHIFTING TRAFFIC

RECORD COPY SIGNED BY KERI JUAREZ  
01/04/11  
ADOPTED

THE ARCHITECT/ENGINEER ASSUMES RESPONSIBILITY FOR APPROPRIATE USE OF THIS STANDARD.

STANDARD NO. 804S-1  
7 OF 9

1. ALL SETUPS SHALL BE IN ACCORDANCE WITH THE CURRENT ADDITION OF THE TEXAS MANUAL ON UNIFORM TRAFFIC CONTROL DEVICES AND THE CITY OF AUSTIN TRANSPORTATION CRITERIA MANUAL.
2. TO DETERMINE APPROPRIATE DEVICES AND SIGN SIZES TO BE USED, REFER TO STANDARD 804S-5. SHEETS 5, 6 AND 7 OF 11.
3. FOR INTERMEDIATE-TERM SITUATIONS, WHEN IT IS NOT FEASIBLE TO REMOVE AND RESTORE PAVEMENT MARKINGS, THE CHANNELIZATION MUST BE MADE DOMINANT BY USING A VERY CLOSE DEVICE SPACING. THIS IS ESPECIALLY IMPORTANT IN LOCATIONS OF CONFLICTING INFORMATION, SUCH AS WHERE TRAFFIC IS DIRECTED OVER A DOUBLE YELLOW CENTERLINE. IN SUCH LOCATIONS, A MAXIMUM CHANNELIZING DEVICE SPACING OF 3 m (10') IS REQUIRED.
4. FOR LONG TERM STATIONARY WORK, ALL CONFLICTING PAVEMENT MARKINGS MUST BE REMOVED AND CENTERLINE STRIPING PROVIDED WHERE TWO WAY TRAFFIC IS IN ADJACENT LANES.
5. FOR TEMPORARY PAVEMENT MARKING REQUIREMENTS SEE STANDARD 804S-3.
6. FOR ONE-WAY AND MULTI-LANE ROADWAYS THE "LANE BLOCKED" SIGN MAY BE USED IN LIEU OF THE "LANE CLOSED AHEAD" SIGN. THE NUMBER OF DIGITS ON THE SIGN SHALL NOT BE GREATER THAN THE NUMBER OF LANES PRESENT ON THE ROADWAY. THE "X" SHALL BE PLACED UNDER THE NUMBER OF LANE(S) BLOCKED.
7. FOR FLAGGING OPERATION REQUIREMENTS SEE STANDARD 804S-2.
8. CONTRACTOR SHALL PROVIDE SIDEWALK CLOSURES, CROSSWALK CLOSURES OR WALKWAY BYPASS WHEREVER PEDESTRIAN MOVEMENTS ARE AFFECTED BY CONSTRUCTION ACTIVITIES. ALL SIDEWALKS AND CROSSWALKS SHALL BE ACCESSIBLE WHEN CONTRACTOR IS NOT WORKING UNLESS APPROVED BY THE TRANSPORTATION DIVISION.
9. FOR EXCAVATION PROTECTION AND SAFETY FENCE REQUIREMENTS SEE STANDARD 804S-4.
10. THE USE OF ARROW DISPLAYS ARE REQUIRED ON ALL LANE CLOSURES. THE CONTRACTOR SHALL PROVIDE ONE (1) STAND-BY UNIT IN GOOD WORKING CONDITION AT THE JOB SITE, READY FOR USE IF THE OPERATION REQUIRES 24-HOUR A DAY LANE CLOSURE SET-UPS.

CITY OF AUSTIN  
DEPARTMENT OF PUBLIC WORKS

GENERAL NOTES

RECORD COPY SIGNED BY KERI JUAREZ  
01/04/11  
ADOPTED

THE ARCHITECT/ENGINEER ASSUMES RESPONSIBILITY FOR APPROPRIATE USE OF THIS STANDARD.

STANDARD NO. 804S-1  
8 OF 9

PEPPER ROCK PARK  
PARKING LOT  
BRUSHY CREEK MUD  
16318 GREAT OAKS DR.  
ROUND ROCK, TX 78681



**HALFF**  
TEXAS REGISTERED ENGINEERING FIRM F-312  
TWO SIERRA WAY, SUITE 105  
GEORGETOWN, TEXAS 78626-7574  
TEL (512) 942-6232  
FAX (512) 869-0089

Project No: AV0 • 29891		
Issued:		
Revisions:		
No.	Date	Description
Drawn by: NJH		
Checked by: NSS		
Sheet Title		
STANDARD DETAILS		
SD1.12		
Sheet Number		