

Typical Transition Lengths and
Suggested Maximum Spacing of Devices

Speed KMPH	Posted Speed MPH	Formula	Minimum Desirable Taper Lengths (L) Meters (Feet)			Suggested Max. Device Spacing		Suggested Sign Spacing Meters (Feet)
			3.0(10) Offset Meters (feet)	3.3(11) Offset Meters (feet)	3.6(12) Offset Meters (feet)	On a taper Meters (feet)	On a tangent Meters (feet)	"X" Dimension
50	30	$L = \frac{WS^2}{60}$	45 (150)	50 (165)	55 (180)	9 (30)	15-20 (60-75)	40 (120)
55	35		65 (205)	70 (225)	75 (245)	10 (35)	25-25 (70-90)	50 (160)
65	40		80 (265)	90 (295)	100 (320)	12 (40)	25-30 (80-100)	75 (240)
70	45	L=WS	135 (450)	150 (495)	165 (540)	13 (45)	25-30 (90-110)	100 (320)
80	50		150 (500)	165 (550)	180 (600)	15 (50)	30-35 (100-125)	120 (400)
90	55		165 (550)	185 (605)	200 (660)	16 (55)	35-40 (110-140)	150 (500)
95	60		180 (600)	200 (660)	220 (720)	18 (60)	40-45 (120-150)	180 (600)
105	65		195 (650)	215 (715)	235 (780)	19 (65)	40-50 (130-165)	210 (700)
115	70		215 (700)	235 (770)	255 (840)	21 (70)	45-55 (140-175)	240 (800)

LEGEND

Channelizing devices

Trailer mounted flashing arrow board

Flagger

CITY OF AUSTIN
DEPARTMENT OF PUBLIC WORKS

DEVICE SPACING

RECORD COPY SIGNED
BY KERI JUAREZ
01/04/11
ADOPTED

THE ARCHITECT/ENGINEER ASSUMES
RESPONSIBILITY FOR APPROPRIATE USE
OF THIS STANDARD.

STANDARD NO.
804S-1
9 OF 9

PEPPER ROCK PARK
PARKING LOT
BRUSHY CREEK MUD
16318 GREAT OAKS DR.
ROUND ROCK, TX 78681



HALFF
TEXAS REGISTERED
ENGINEERING FIRM F-312
TWO SIERRA WAY, SUITE 105
GEORGETOWN, TEXAS 78626-7574
TEL (512) 942-6232
FAX (512) 869-0089

Project No: AV0 * 25891

Issued:

Revisions:

No.	Date	Description

Drawn by: NJH
Checked by: NSS

Sheet Title
STANDARD DETAILS

SD1.13

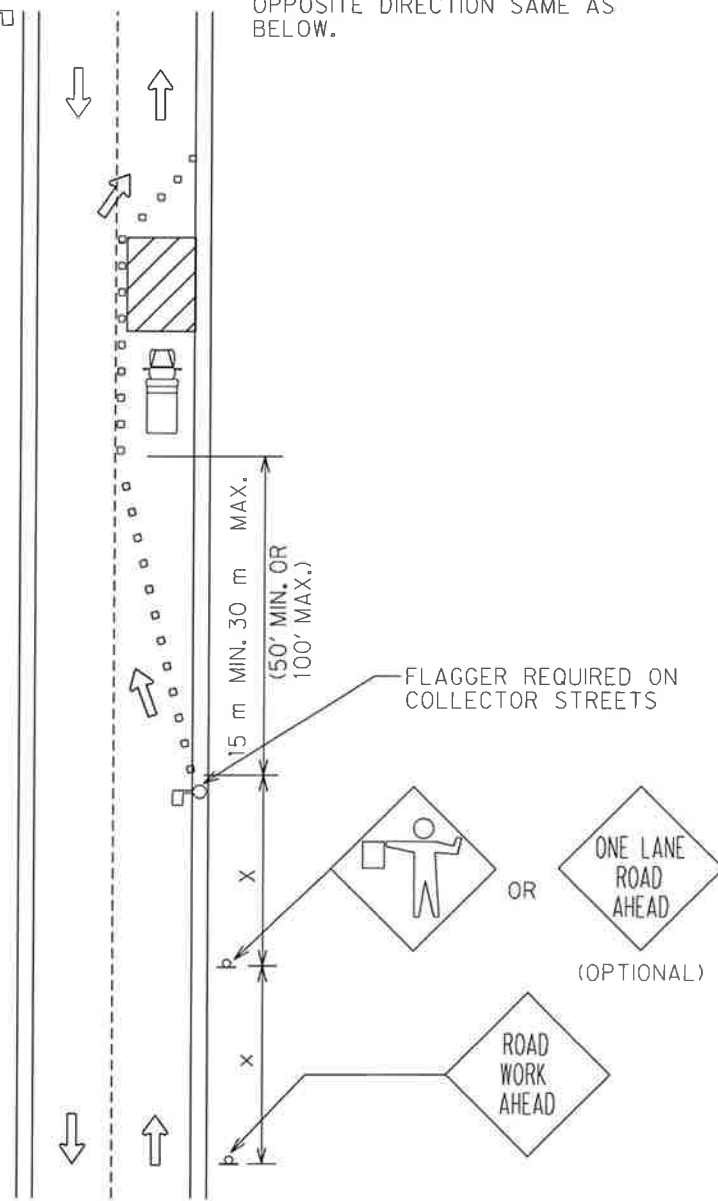
Sheet Number

FLAGGER REQUIRED ON COLLECTOR STREETS

USE OF SECOND FLAGGER IS OPTIONAL.

NOTE:

WARNING SIGN SEQUENCE IN OPPOSITE DIRECTION SAME AS BELOW.



SEE SHEET 3 OF 8 FOR FLAGGER NOTES AND TAPER LENGTHS. SEE SHEET 8 OF 8 FOR DEVICE SPACING.

CITY OF AUSTIN
DEPARTMENT OF PUBLIC WORKS

COLLECTOR / RESIDENTIAL STREET
FLAGGING OPERATIONS

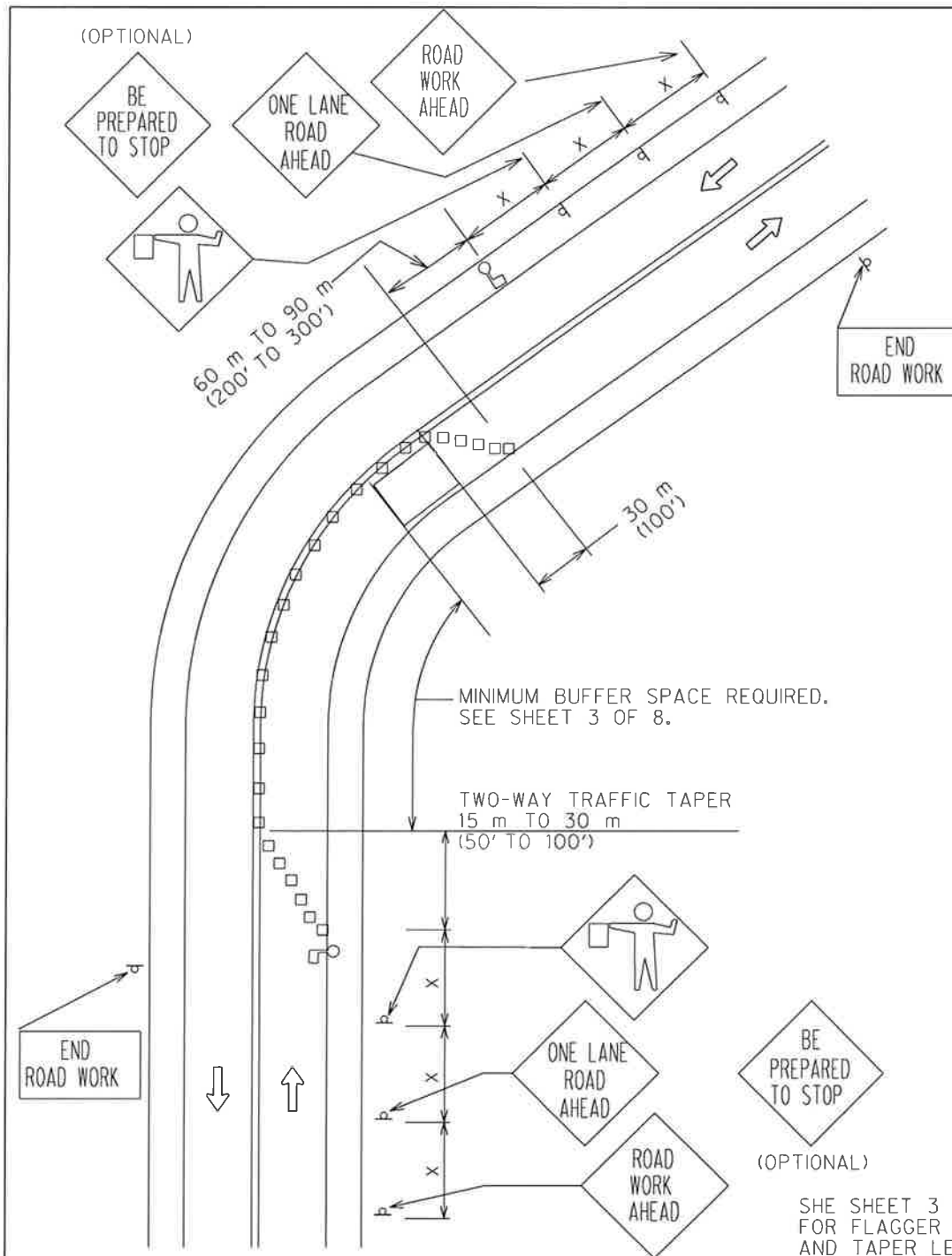
RECORD COPY SIGNED
BY BILL GARDNER

03/13/06
ADOPTED

THE ARCHITECT/ENGINEER ASSUMES
RESPONSIBILITY FOR APPROPRIATE USE
OF THIS STANDARD.

STANDARD NO.
804S-2
1 OF 8

(OPTIONAL)



MINIMUM BUFFER SPACE REQUIRED.
SEE SHEET 3 OF 8.

TWO-WAY TRAFFIC TAPER
15 m TO 30 m
(50' TO 100')

SEE SHEET 3 OF 8
FOR FLAGGER NOTES
AND TAPER LENGTHS.
SEE SHEET 8 OF 8
FOR DEVICE SPACING.

CITY OF AUSTIN
DEPARTMENT OF PUBLIC WORKS

FLAGGER SETUP FOR 2 LANE ROADWAY

RECORD COPY SIGNED
BY BILL GARDNER

03/13/06
ADOPTED

THE ARCHITECT/ENGINEER ASSUMES
RESPONSIBILITY FOR APPROPRIATE USE
OF THIS STANDARD.

STANDARD NO.
804S-2
2 OF 8

PEPPER ROCK PARK
PARKING LOT
BRUSHY CREEK MUD
16318 GREAT OAKS DR.
ROUND ROCK, TX 78681



Project No: AV0 * 29891

Issued:

Revisions:

No.	Date	Description

Drawn by: NJH
Checked by: NSS

Sheet Title

STANDARD DETAILS

SD1.14

Sheet Number

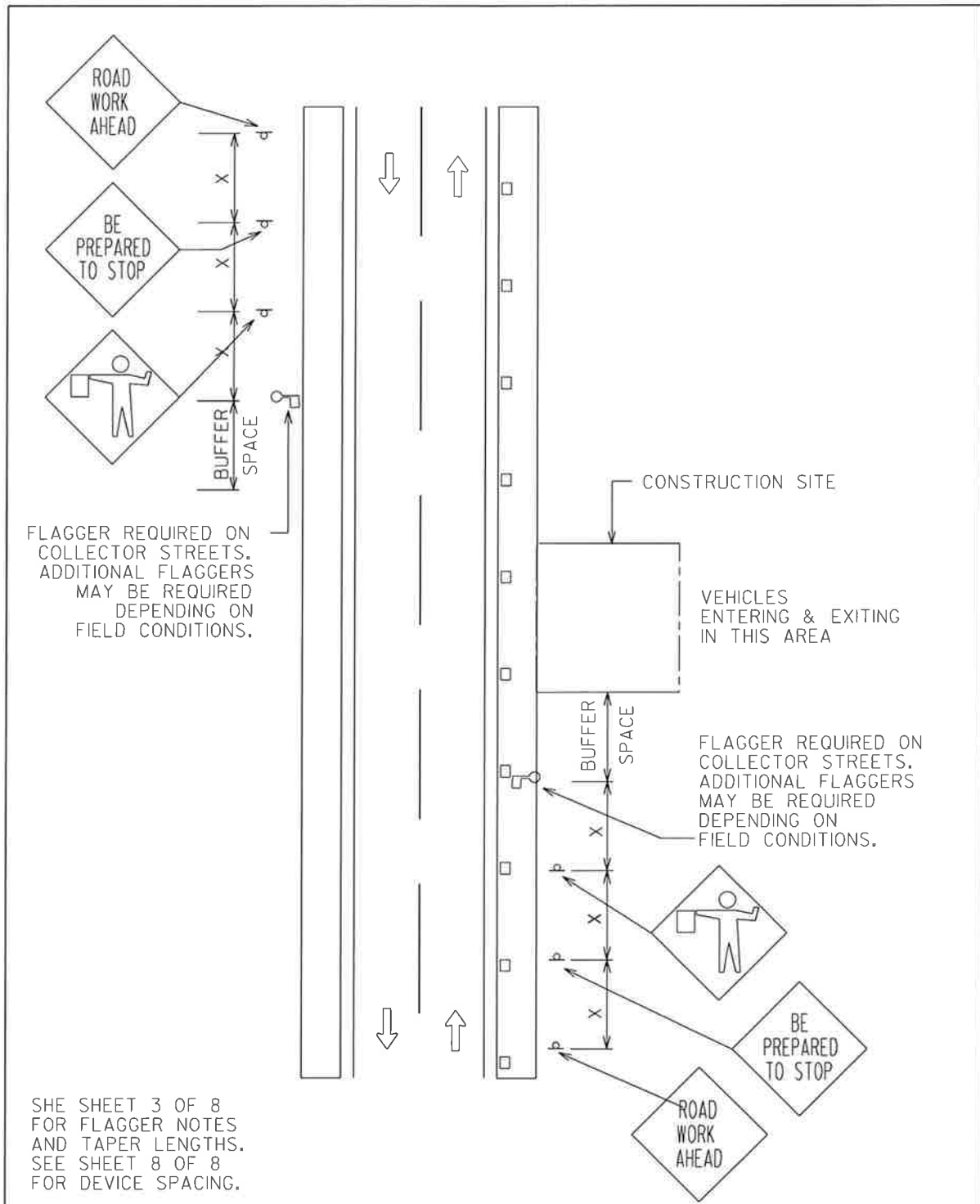
- FOR DAYTIME WORK, THE FLAGGER SHALL WEAR AN APPROVED BRIGHTLY COLORED VEST. FOR NIGHTTIME WORK, THE VEST SHALL BE RETROFLECTIVE. THE RETROFLECTIVE MATERIAL SHALL BE ORANGE, YELLOW, WHITE, SILVER, STRONG YELLOW-GREEN OR A FLOURESCENT VERSION OF THESE COLORS AND SHALL BE VISIBLE AT A MINIMUM DISTANCE OF 305 m (1,000').
- FOR LOW-VOLUME APPLICATIONS, A SINGLE FLAGGER MAY BE ADEQUATE. WHERE ONE FLAGGER CAN BE USED, SUCH AS FOR SHORT WORK AREAS ON STRAIGHT ROADWAYS, THE FLAGGER MUST BE VISIBLE TO APPROACHING TRAFFIC FROM BOTH DIRECTIONS.
- FLAGGERS SHALL USE ONLY STOP/SLOW PADDLE TO DIRECT TRAFFIC UNLESS WORKING IN A SIGNALIZED INTERSECTION WHERE DRIVERS MAY BE CONFUSED BY THE SIGN PADDLE. HAND SIGNAL MAY BE USED IN THESE SITUATIONS.
- FLAGGERS SHALL ENSURE THAT ALL REQUIRED SIGNING IS IN PLACE PRIOR TO BEGINNING FLAGGING OPERATIONS.
- FLAGGERS SHALL NOT PERFORM WORK THAT IS NOT RELATED TO FLAGGING WHILE ON DUTY.
- FLAGGERS MAY CARRY AIR HORNS OR WHISTLES TO WARN WORKERS OF AN EMERGENCY CONDITION.
- FLAGGERS SHALL BE REQUIRED TO USE TWO-WAY RADIOS WHEN OUT OF CLEAR VIEW OF EACH OTHER.
- FLOODLIGHTS SHOULD BE PROVIDED TO MARK FLAGGER STATIONS AT NIGHT AS NEEDED.

TAPER LENGTHS

SPEED (kmph)	SPEED* (mph)	LENGTH (meters)	LENGTH (feet)
30	20	11	35
40	25	17	55
50	30	26	85
55	35	36	120
65	40	51	170
70	45	66	220
80	50	84	280
90	55	101	335
95	60	125	415
105	65	146	485

*POSTED SPEED

CITY OF AUSTIN DEPARTMENT OF PUBLIC WORKS		FLAGGER SETUP FOR 2 LANE ROADWAY	
RECORD COPY SIGNED BY BILL GARDNER	03/13/06 ADOPTED	THE ARCHITECT/ENGINEER ASSUMES RESPONSIBILITY FOR APPROPRIATE USE OF THIS STANDARD.	STANDARD NO. 804S-2 3 OF 8



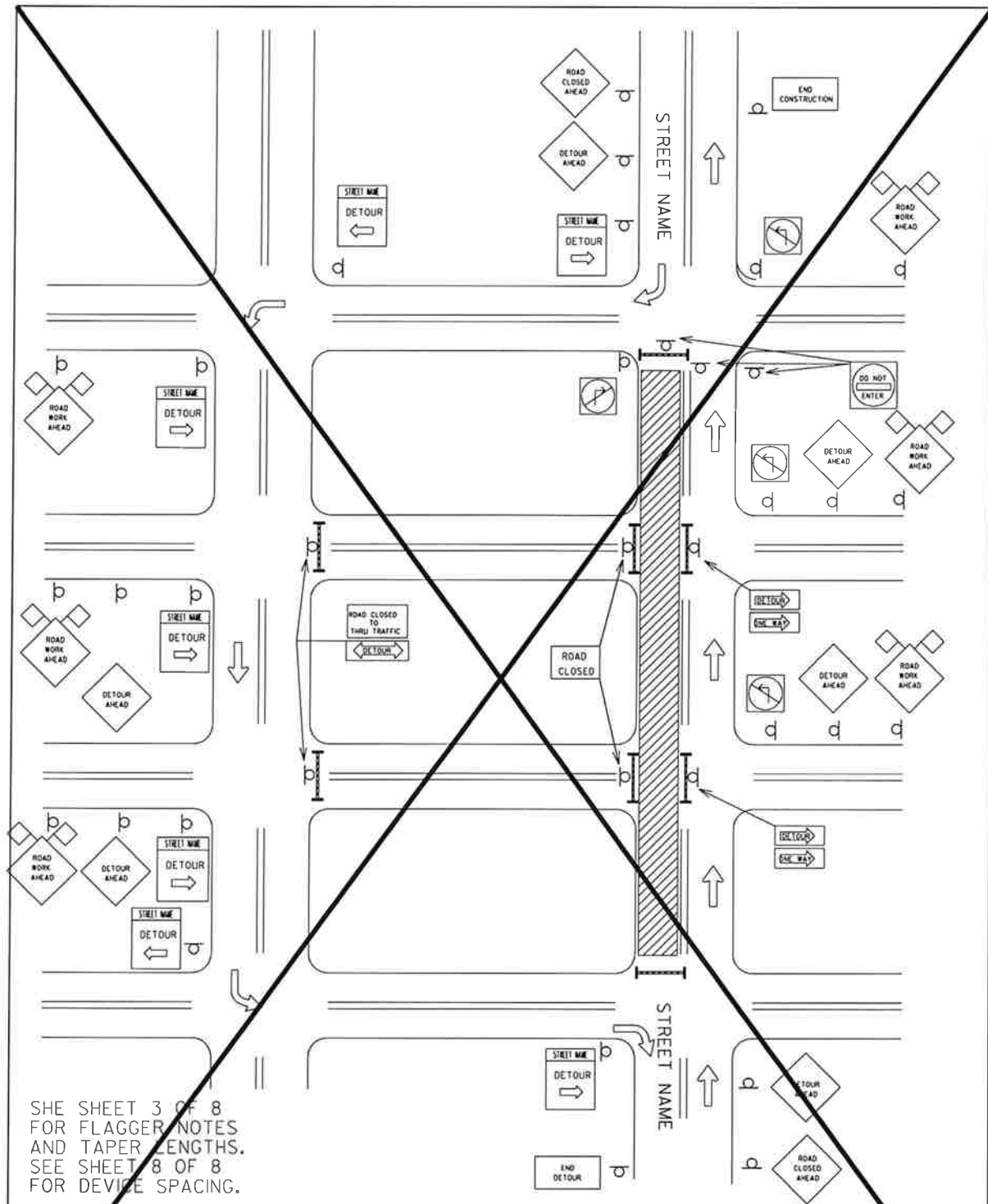
CITY OF AUSTIN DEPARTMENT OF PUBLIC WORKS		FLAGGER SETUP FOR VEHICLES ENTERING AND EXITING WORK SITE	
RECORD COPY SIGNED BY BILL GARDNER	03/13/06 ADOPTED	THE ARCHITECT/ENGINEER ASSUMES RESPONSIBILITY FOR APPROPRIATE USE OF THIS STANDARD.	STANDARD NO. 804S-2 4 OF 8

**PEPPER ROCK PARK
PARKING LOT**
BRUSHY CREEK MUD
16318 GREAT OAKS DR.
ROUND ROCK, TX 78681



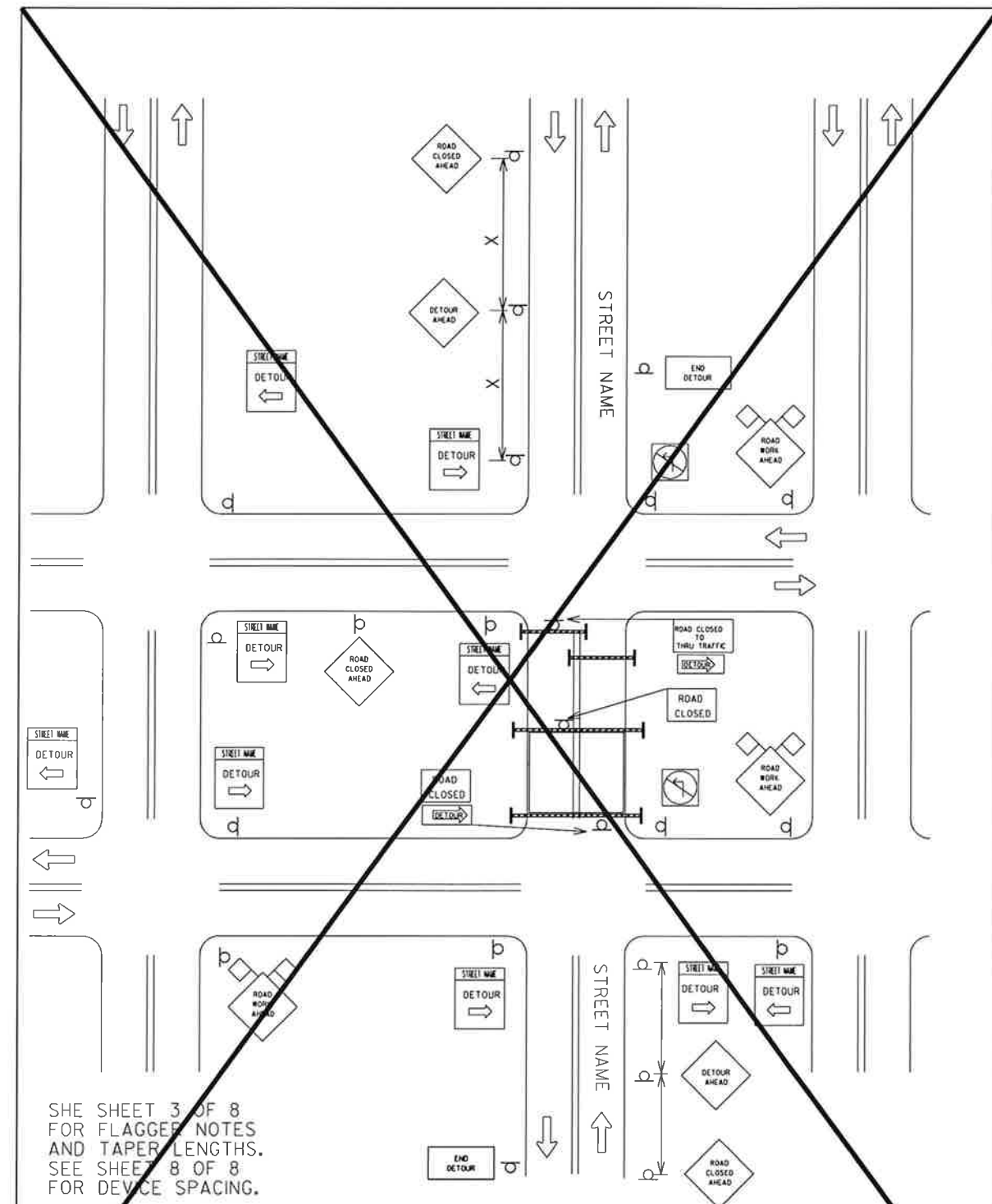
HALFF
TEXAS REGISTERED
ENGINEERING FIRM F-312
TWO SIERRA WAY, SUITE 105
GEORGETOWN, TEXAS 78626-7574
TEL (512) 942-6232
FAX (512) 969-0089

Project No. AV0 * 29891		
Issued:		
Revisions:		
No.	Date	Description
Drawn by: NJM		
Checked by: NSS		
Sheet Title		
STANDARD DETAILS		
SD1.15		
Sheet Number		



CITY OF AUSTIN DEPARTMENT OF PUBLIC WORKS		STREET DETOUR SINGLE DIRECTION	
RECORD COPY SIGNED BY BILL GARDNER	03/13/06 ADOPTED	THE ARCHITECT/ENGINEER ASSUMES RESPONSIBILITY FOR APPROPRIATE USE OF THIS STANDARD.	STANDARD NO. 804S-2 5 OF 8

SHE SHEET 3 OF 8
FOR FLAGGER NOTES
AND TAPER LENGTHS.
SEE SHEET 8 OF 8
FOR DEVICE SPACING.



CITY OF AUSTIN DEPARTMENT OF PUBLIC WORKS		STREET DETOUR BOTH DIRECTIONS	
RECORD COPY SIGNED BY BILL GARDNER	03/13/06 ADOPTED	THE ARCHITECT/ENGINEER ASSUMES RESPONSIBILITY FOR APPROPRIATE USE OF THIS STANDARD.	STANDARD NO. 804S-2 6 OF 8

SHE SHEET 3 OF 8
FOR FLAGGER NOTES
AND TAPER LENGTHS.
SEE SHEET 8 OF 8
FOR DEVICE SPACING.

**PEPPER ROCK PARK
PARKING LOT**
BRUSHY CREEK MUD
16318 GREAT OAKS DR.
ROUND ROCK, TX 78681



HALFF
TEXAS REGISTERED
ENGINEERING FIRM F-312
TWO SIERRA WAY, SUITE 105
GEORGETOWN, TEXAS 78626-7574
TEL (512) 942-5232
FAX (512) 869-0089

Project No: AV0 * 25891		
Issued:		
Revisions:		
No.	Date	Description
Drawn by: NJH		
Checked by: NSS		
Sheet Title		
STANDARD DETAILS		
SD1.16		
Sheet Number		

**PEPPER ROCK PARK
PARKING LOT**
BRUSHY CREEK MUD
16318 GREAT OAKS DR.
ROUND ROCK, TX 78681



HALFF
TEXAS REGISTERED
ENGINEERING FIRM F-312
TWO SIERRA WAY, SUITE 105
GEORGETOWN, TEXAS 78626-7574
TEL (512) 942-6232
FAX (512) 868-0089

Project No. AVD * 29891	
Issued:	
Revisions:	
No.	Date
Description	
Drawn by: NJH	
Checked by: NSS	
Sheet Title	
STANDARD DETAILS	
SD1.17	
Sheet Number	

PREFERRED METHOD PADDLE	EMERGENCY USE ONLY FLAG
 455 mm Min. (18" Min.)	 915 mm (36")
 610 mm Min. (24" Min.)	 610 mm Min. (24" Min.)
TO STOP TRAFFIC	TO STOP TRAFFIC
 610 mm Min. (24" Min.)	
TRAFFIC PROCEED	TRAFFIC PROCEED
TO ALERT AND SLOW TRAFFIC	TO ALERT AND SLOW TRAFFIC

SHE SHEET 3 OF 8 FOR FLAGGER NOTES.

CITY OF AUSTIN DEPARTMENT OF PUBLIC WORKS	USE OF HAND SIGNALING DEVICES		
RECORD COPY SIGNED BY BILL GARDNER	03/13/06 ADOPTED	THE ARCHITECT/ENGINEER ASSUMES RESPONSIBILITY FOR APPROPRIATE USE OF THIS STANDARD.	STANDARD NO. 804S-2 7 OF 8

Typical Transition Lengths and Suggested Maximum Spacing of Devices

Speed KMPH	Posted Speed MPH	Formula	Minimum Desirable Taper Lengths (L) Meters (Feet)			Suggested Max. Device Spacing		Suggested Sign Spacing Meters (Feet)
			3.0(10) Offset Meters (feet)	3.3(11) Offset Meters (feet)	3.6(12) Offset Meters (feet)	On a taper Meters (feet)	On a tangent Meters (feet)	"X" Dimension
50	30	$L = \frac{WS^2}{60}$	45 (150)	50 (165)	55 (180)	9 (30)	15-20 (60-75)	40 (120)
55	35		65 (205)	70 (225)	75 (245)	10 (35)	25-25 (70-90)	50 (160)
65	40		80 (265)	90 (295)	100 (320)	12 (40)	25-30 (80-100)	75 (240)
70	45	$L = WS$	135 (450)	150 (495)	165 (540)	13 (45)	25-30 (90-110)	100 (320)
80	50		150 (500)	165 (550)	180 (600)	15 (50)	30-35 (100-125)	120 (400)
90	55		165 (550)	185 (605)	200 (660)	16 (55)	35-40 (110-140)	150 (500)
95	60		180 (600)	200 (660)	220 (720)	18 (60)	40-45 (120-150)	180 (600)
105	65		195 (650)	215 (715)	235 (780)	19 (65)	40-50 (130-165)	210 (700)
115	70		215 (700)	235 (770)	255 (840)	21 (70)	45-55 (140-175)	240 (800)

LEGEND

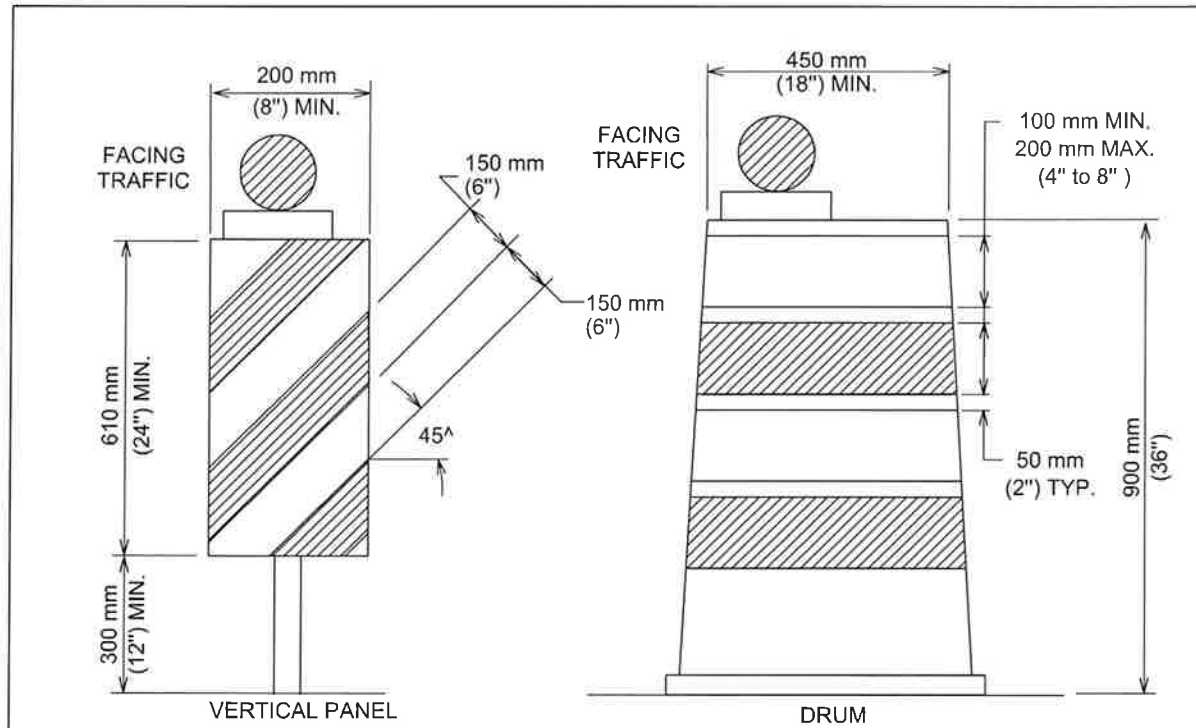
- Channelizing devices
- Trailer mounted flashing arrow board
- Flagger

TRAFFIC DETOUR NOTES:

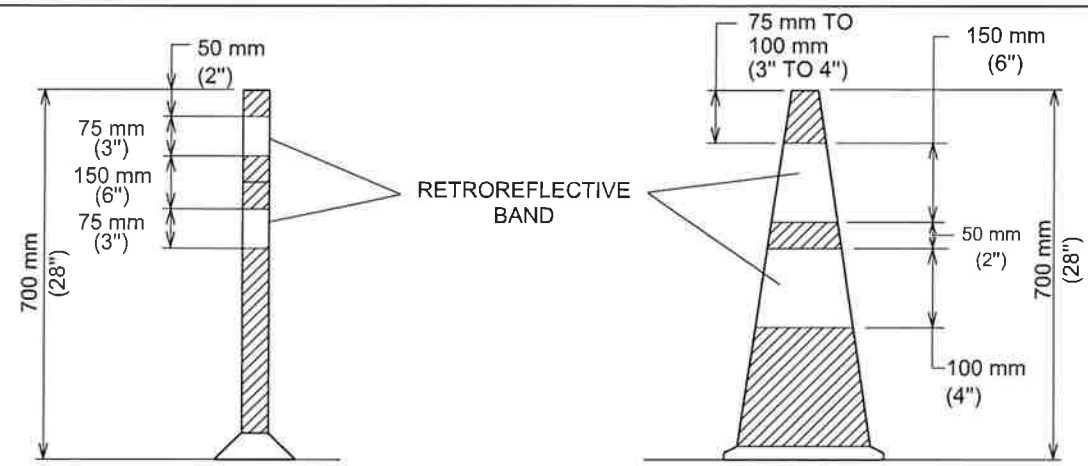
1. "STREET CLOSED" AND "STREET CLOSED TO THRU TRAFFIC" MAY BE USED IN PLACE OF "ROAD CLOSED" AND "ROAD CLOSED TO THRU TRAFFIC".
2. THE USE OF A STREET SIGN NAME MOUNTED WITH THE M4-9 DETOUR SIGN** IS REQUIRED. THE STREET NAME PLATE SHOULD BE PLACED ABOVE THE DETOUR SIGN. THE PLATE MAY HAVE EITHER A WHITE-ON-GREEN OR A BLACK-ON-ORANGE LEGEND.
3. ADDITIONAL "DO NOT ENTER SIGNS" MAY BE DESIRABLE AT INTERSECTIONS WITH INTERVENING STREETS.
4. A M4-9 DETOUR SIGN** WITH AN ADVANCE TURN ARROW MAY BE USED IN ADVANCE OF A TURN. ON MULTI-LANE STREETS, SUCH SIGNS SHOULD BE USED.
5. M4-9 DETOUR SIGNS** MAY BE LOCATED ON THE FAR SIDE OF INTERSECTIONS.

** TEXAS MANUAL ON UNIFORM TRAFFIC CONTROL DEVICES

CITY OF AUSTIN DEPARTMENT OF PUBLIC WORKS	TYPICAL LENGTHS & SPACING OF DEVICES, LEGEND and GENERAL NOTES		
RECORD COPY SIGNED BY BILL GARDNER	03/13/06 ADOPTED	THE ARCHITECT/ENGINEER ASSUMES RESPONSIBILITY FOR APPROPRIATE USE OF THIS STANDARD.	STANDARD NO. 804S-2 8 OF 8



LONG TERM AND INTERMEDIATE TERM STATIONARY WORK



TUBULAR MARKERS
SHORT TERM AND SHORT DURATION WORK

CONES

SEE STANDARD 804S-5
SHEET 12 OF 13 AND SHEET 13 OF 13
FOR GENERAL NOTES AND DEVICE SPACING.

CITY OF AUSTIN DEPARTMENT OF PUBLIC WORKS		CHANNELIZING DEVICES	
RECORD COPY SIGNED BY SAM ANGOORI	01/04/10	THE ARCHITECT/ENGINEER ASSUMES RESPONSIBILITY FOR APPROPRIATE USE OF THIS STANDARD.	STANDARD NO. 804S-5 1 OF 13
ADOPTED			

CHANNELIZING DEVICES

- ALL CHANNELIZING DEVICES SHALL HAVE WARNING LIGHTS OR LARGE REFLECTORS WHEN USED AT NIGHT. FLASHING WARNING LIGHTS MAY BE PLACED ON CHANNELIZING DEVICES USED SINGULARLY OR IN GROUPS TO MARK A SPOT CONDITION. WARNING LIGHTS ON CHANNELIZING DEVICES USED IN A SERIES SHALL BE STEADY-BURN. CHANNELIZING DEVICES IN TAPERS AT NIGHT SHALL HAVE TYPE C WARNING LIGHTS.
- THE RETROREFLECTIVE MATERIAL USED ON CHANNELIZING DEVICES SHALL HAVE A SMOOTH, SEALED OUTER SURFACE.
- THE NAME AND TELEPHONE NUMBER OF THE AGENCY, CONTRACTOR OR SUPPLIER SHALL BE SHOWN ON THE NON-RETROREFLECTIVE SURFACE OF ALL CHANNELIZING DEVICES. THE LETTERS AND NUMBERS SHALL BE A NON-RETROREFLECTIVE COLOR AND NOT OVER 50 mm (2") IN HEIGHT.
- PARTICULAR ATTENTION SHOULD BE GIVEN TO ASSURE THAT CHANNELIZING DEVICES ARE MAINTAINED AND KEPT CLEAN, VISIBLE AND PROPERLY POSITIONED AT ALL TIMES. DEVICES SHALL BE REPLACED THAT ARE DAMAGED AND HAVE LOST A SIGNIFICANT AMOUNT OF THEIR RETROREFLECTIVITY AND EFFECTIVENESS.

CONES

CONES SHALL PREDOMINANTLY BE ORANGE, FLUORESCENT RED-ORANGE, OR FLUORESCENT YELLOW-ORANGE IN COLOR, NOT LESS THAN 70 mm (28") IN HEIGHT, AND SHALL BE MADE OF A MATERIAL THAT CAN BE STRUCK WITHOUT DAMAGING VEHICLES ON IMPACT. FOR NIGHT TIME USE, CONES SHALL BE RETROREFLECTIVE OR EQUIPPED WITH LIGHTING DEVICES FOR MAXIMUM VISIBILITY. RETROREFLECTION OF CONES SHALL BE PROVIDED BY A WHITE BOND 150 mm (6") WIDE, NO MORE THAN 75 TO 100 mm (3 TO 4") FROM THE TOP OF THE CONE, AND AN ADDITIONAL 100 mm (4") WHITE BAND A MINIMUM OF 50 mm (2") BELOW THE 150 mm (6") BAND. TRAFFIC CONES ARE NORMALLY USED FOR SHORT-TERM STATIONARY AND SHORT DURATION WORK. HOWEVER, CONES MAY BE USED FOR INTERMEDIATE-TERM STATIONARY WORK AT NIGHT, IF THE SITE IS CONTINUOUSLY MANNED.

TUBULAR MARKERS

TUBULAR MARKERS SHALL PREDOMINANTLY BE ORANGE IN COLOR, NOT LESS THAN 700 mm (28") IN HEIGHT, A MINIMUM 50 mm (2") WIDE WHEN FACING TRAFFIC AND MADE OF A MATERIAL THAT CAN BE STRUCK WITHOUT DAMAGING VEHICLES. FOR NIGHT TIME USE, TUBULAR MARKERS SHALL BE RETROREFLECTIVE PROVIDED BY TWO (2) 75 mm (3") WIDE WHITE BANDS PLACED A MAXIMUM OF 50 mm (2") FROM THE TOP, WITH A MAXIMUM OF 150 mm (6") BETWEEN BANDS. TUBULAR MARKERS ARE NORMALLY USED FOR SHORT-TERM STATIONARY AND SHORT DURATION WORK. HOWEVER, TUBULAR MARKERS MAY BE USED FOR INTERMEDIATE-TERM STATIONARY WORK AT NIGHT, IF THE SITE IS CONTINUOUSLY MANNED.

VERTICAL PANELS

VERTICAL PANELS SHALL BE 200 TO 300 mm (8 TO 12") WIDE AND AT LEAST 600 mm (24") IN HEIGHT. THEY SHALL HAVE ORANGE AND WHITE STRIPES, AND BE RETROREFLECTIVE. PANEL STRIPE WIDTHS SHALL BE 150 mm (6") EXCEPT WHERE PANEL HEIGHTS ARE LESS THAN 900 mm (36"), WHEN 100 mm (4") STRIPES MAY BE USED. IF USED FOR TWO-WAY TRAFFIC, BACK-TO-BACK PANELS SHALL BE USED.

DRUMS

- DRUMS USED FOR TRAFFIC WARNING OR CHANNELIZATION SHALL BE CONSTRUCTED OF LIGHT-WEIGHT FLEXIBLE AND DEFORMABLE MATERIALS AND BE A MINIMUM OF 900 mm (36") IN HEIGHT, AND HAVE AT LEAST 450 mm (18") MINIMUM WIDTH, REGARDLESS OF ORIENTATION. STEEL DRUMS SHALL NOT BE USED. THE MARKINGS ON DRUMS SHALL BE HORIZONTAL, CIRCUMFERENTIAL, ALTERNATING ORANGE AND WHITE RETROREFLECTIVE STRIPES 100 TO 200 mm (4 TO 8") WIDE. EACH DRUM SHALL HAVE A MINIMUM OF TWO (2) ORANGE AND TWO (2) WHITE STRIPES. ANY NON-RETROREFLECTIVE SPACES BETWEEN THE HORIZONTAL ORANGE AND WHITE STRIPES, SHALL NOT EXCEED 50 mm (2") WIDE. DRUMS SHALL HAVE CLOSED TOPS THAT WILL NOT ALLOW COLLECTION OF ROADWORK OR OTHER DEBRIS.
- DRUMS SHOULD NOT BE WEIGHTED WITH SAND, WATER OR ANY MATERIAL TO AN EXTENT THAT WOULD MAKE THE HAZARDOUS TO MOTORISTS, PEDESTRIANS OR WORKERS. WHEN THEY ARE USED IN REGIONS SUSCEPTIBLE TO FREEZING, THEY SHOULD HAVE DRAINAGE HOLES IN THE BOTTOM SO WATER WILL NOT ACCUMULATE AND FREEZE, CAUSING A HAZARD IF STRUCK BY A MOTORIST. BALLAST SHALL NOT BE PLACED ON TOP OF THE DRUM.

CITY OF AUSTIN DEPARTMENT OF PUBLIC WORKS		CHANNELIZING DEVICES	
RECORD COPY SIGNED BY SAM ANGOORI	01/04/10	THE ARCHITECT/ENGINEER ASSUMES RESPONSIBILITY FOR APPROPRIATE USE OF THIS STANDARD.	STANDARD NO. 804S-5 2 OF 13
ADOPTED			

PEPPER ROCK PARK
PARKING LOT
BRUSHY CREEK MUD
16318 GREAT OAKS DR.
ROUND ROCK, TX 78681



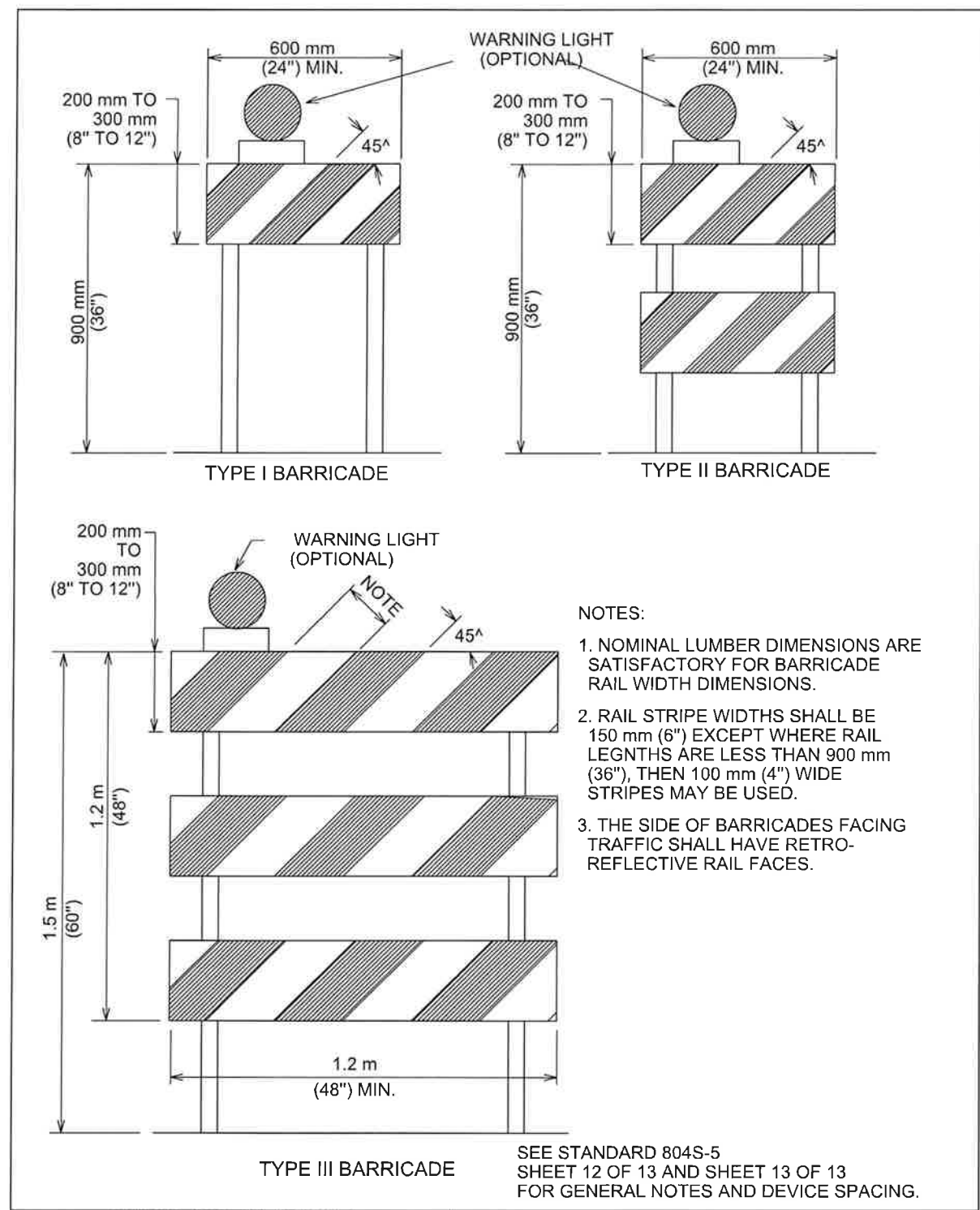
HALFF
TEXAS REGISTERED
ENGINEERING FIRM F-312
TWO SIERRA WAY, SUITE 105
GEORGETOWN, TEXAS 78628-7574
TEL (512) 942-6232
FAX (512) 869-0089

Project No: AV0 * 29891		
Issued:		
Revisions:		
No.	Date	Description
Drawn by: NJH		
Checked by: NSS		
Sheet Title		
STANDARD DETAILS		
SD1.18		
Sheet Number		



HALFF
TEXAS REGISTERED
ENGINEERING FIRM F-312
TWO SIERRA WAY, SUITE 105
GEORGETOWN, TEXAS 78626-7574
TEL (512) 942-6232
FAX (512) 869-0089

Project No: AV0 • 29891		
Issued:		
Revisions:		
No.	Date	Description
Drawn by: NJH		
Checked by: NSS		
Sheet Title	STANDARD DETAILS	
	SD1.19	
Sheet Number		

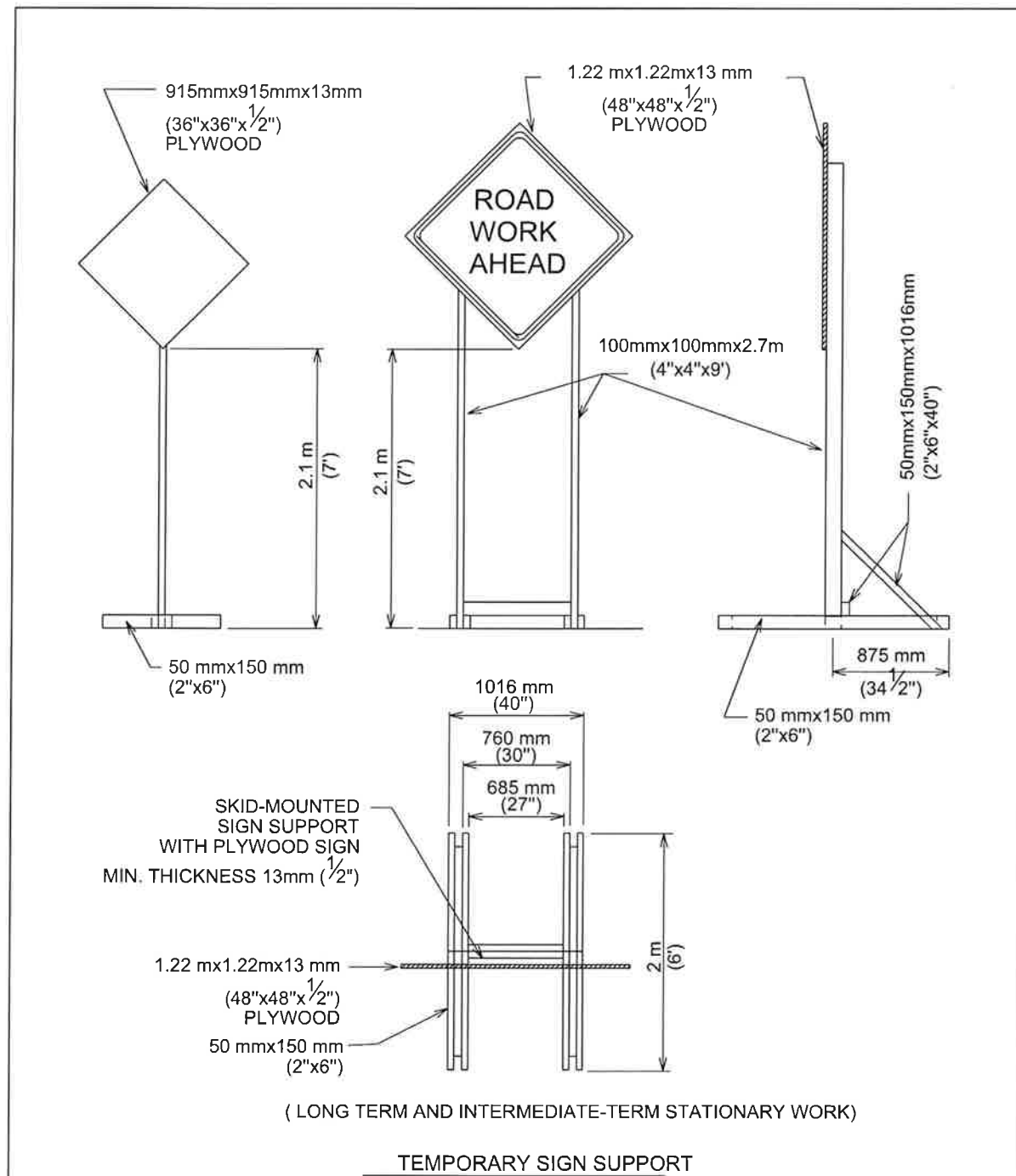


CITY OF AUSTIN DEPARTMENT OF PUBLIC WORKS		BARRICADES	
RECORD COPY SIGNED BY SAM ANGOORI	01/04/10	THE ARCHITECT/ENGINEER ASSUMES RESPONSIBILITY FOR APPROPRIATE USE OF THIS STANDARD.	STANDARD NO. 804S-5 3 OF 13
	ADOPTED		

BARRICADES

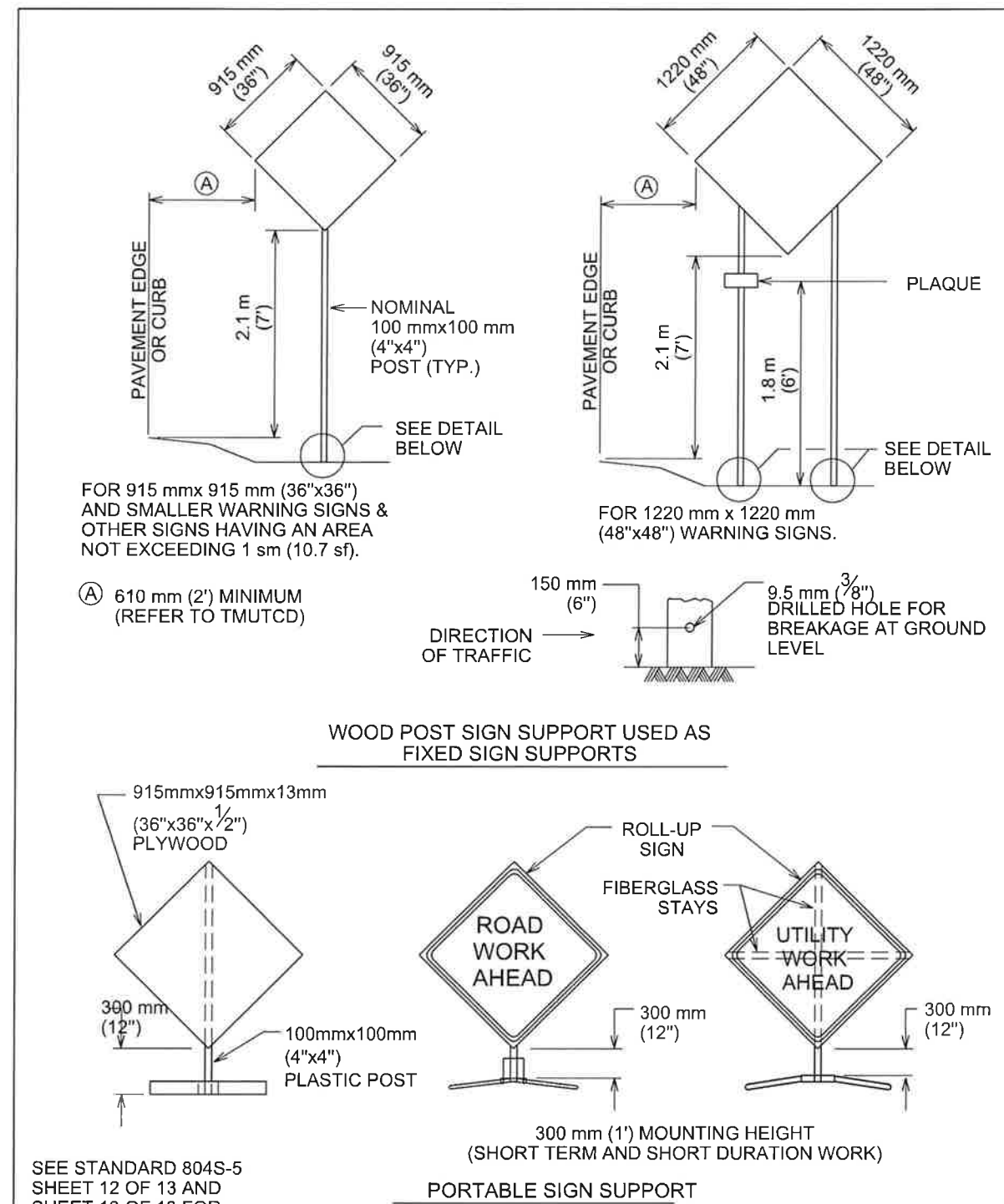
- BARRICADES SHALL BE OF THREE TYPES: TYPE I, TYPE II OR TYPE III.
- STRIPES ON BARRICADE RAILS SHALL BE ALTERNATING ORANGE AND WHITE RETRO-REFLECTIVE STRIPES (SLOPING DOWNWARD AT AN ANGLE OF 45 DEGREES IN THE DIRECTION TRAFFIC IS TO PASS). THE STRIPES SHALL BE 150 mm (6") WIDE, EXCEPT WHERE RAIL LENGTHS ARE LESS THAN 900 mm (36"), WHEN 100 mm (4") WIDE STRIPES MAY BE USED.
- WHERE A BARRICADE EXTENDS ENTIRELY ACROSS A ROADWAY, THE SURFACE STRIPES SHOULD SLOPE DOWNWARD IN THE DIRECTION TOWARD WHICH TRAFFIC MUST TURN. WHERE BOTH RIGHT AND LEFT TURNS ARE PROVIDED, THE STRIPES MAY SLOPE DOWNWARD IN BOTH DIRECTIONS FROM THE CENTER OF THE BARRICADE OR BARRICADES. WHERE NO TURNS ARE INTENDED, THE STRIPES SHOULD SLOPE DOWNWARD TOWARD THE CENTER OF THE BARRICADE OR BARRICADES.
- BARRICADE RAILS SHOULD BE SUPPORTED IN A MANNER THAT WILL ALLOW THEM TO BE SEEN BY THE MOTORIST AND PROVIDE A STABLE SUPPORT NOT EASILY BLOWN OVER BY THE WIND OR TRAFFIC. FOR TYPE I BARRICADES, THE SUPPORT MAY INCLUDE OTHER UNSTRIPED HORIZONTAL PANELS NECESSARY TO PROVIDE STABILITY.
- BARRICADES ARE LOCATED ADJACENT TO TRAFFIC AND ARE THEREFORE SUBJECT TO IMPACT WITH ERRANT VEHICLES. BECAUSE OF THEIR VULNERABLE POSITION AND THE HAZARD THEY COULD CREATE, THEY SHOULD BE CONSTRUCTED OF LIGHTWEIGHT MATERIALS AND HAVE NO RIGID STAY BRACING FOR A-FRAME DESIGNS. ALL BARRICADE SYSTEMS SHOULD BE CRASHWORTHY.
- ON HIGH-SPEED EXPRESSWAYS OR IN OTHER SITUATION WHERE BARRICADES MAY BE SUSCEPTIBLE TO OVERTURING IN THE WIND, SANDBAGS SHOULD BE USED FOR BALLASTING. SANDBAGS MAY BE PLACED ON PARTS OF THE FRAME OR STAYS TO PROVIDE THE REQUIRED BALLAST BUT SHALL NOT BE PLACED ON TOP OF ANY STRIPED RAIL. BARRICADES SHALL NOT BE BALLASTED BY HEAVY OBJECTS SUCH AS ROCKS OR CHUNKS OF CONCRETE.

CITY OF AUSTIN DEPARTMENT OF PUBLIC WORKS		BARRICADES	
RECORD COPY SIGNED BY SAM ANGOORI	01/04/10	THE ARCHITECT/ENGINEER ASSUMES RESPONSIBILITY FOR APPROPRIATE USE OF THIS STANDARD.	STANDARD NO. 804S-5 4 OF 13
	ADOPTED		



SEE STANDARD 804S-5 SHEET 12 OF 13 AND SHEET 13 OF 13 FOR GENERAL NOTES AND DEVICE SPACING.

CITY OF AUSTIN DEPARTMENT OF PUBLIC WORKS		TRAFFIC CONTROL SIGNS	
RECORD COPY SIGNED BY SAM ANGOORI	01/04/10	THE ARCHITECT/ENGINEER ASSUMES RESPONSIBILITY FOR APPROPRIATE USE OF THIS STANDARD.	STANDARD NO. 804S-5 5 OF 13
ADOPTED			



SEE STANDARD 804S-5 SHEET 12 OF 13 AND SHEET 13 OF 13 FOR GENERAL NOTES AND DEVICE SPACING.

CITY OF AUSTIN DEPARTMENT OF PUBLIC WORKS		TRAFFIC CONTROL SIGNS	
RECORD COPY SIGNED BY SAM ANGOORI	01/04/10	THE ARCHITECT/ENGINEER ASSUMES RESPONSIBILITY FOR APPROPRIATE USE OF THIS STANDARD.	STANDARD NO. 804S-5 6 OF 13
ADOPTED			

**PEPPER ROCK PARK
 PARKING LOT**
 BRUSHY CREEK MUD
 16318 GREAT OAKS DR.
 ROUND ROCK, TX 78681



HALFF
 TEXAS REGISTERED
 ENGINEERING FIRM F-312
 TWO SIERRA WAY, SUITE 105
 GEORGETOWN, TEXAS 78626-7574
 TEL (512) 942-6292
 FAX (512) 869-0089

Project No. AV0 * 29891

Issue:

Revisions:		
No.	Date	Description

Drawn by: NJH
 Checked by: NSS
 Sheet Title:
 STANDARD DETAILS
SD1.20
 Sheet Number

13. ALL PERSONS WORKING WITHIN THE RIGHT-OF-WAY SHALL WEAR A BRIGHTLY COLORED SAFETY VEST. FOR NIGHTTIME WORK THE VEST SHALL BE RETROREFLECTIVE,
14. WHEN AN INTERSECTION IS CLOSED FOR CONSTRUCTION, THE CONTRACTOR SHALL PROCEED WITH CONSTRUCTION IN SUCH A MANNER THAT THE CLOSURE TIME IS MINIMIZED.
15. THE CONTRACTOR SHALL NOTIFY THE CAPITAL METRO DISPATCHER AT 385-4295 ONE (1) WEEK PRIOR TO LANE CLOSURES ADJACENT TO BUS STOPS.

DURATION OF WORK

WORK DURATION IS A MAJOR FACTOR IN DETERMINING THE NUMBER AND TYPES OF DEVICES USED IN TEMPORARY TRAFFIC ZONES. THE FIVE (5) CATEGORIES OF WORK DURATION AND THEIR TIME AT A LOCATION ARE AS FOLLOWS:

- LONG-TERM STATIONARY-WORK THAT OCCUPIES A LOCATION FOR MORE THAN 3 DAYS.
- INTERMEDIATE-TERM STATIONARY-WORK THAT OCCUPIES A LOCATION FROM OVERNIGHT TO 3 DAYS.
- SHORT-TERM STATIONARY-DAYTIME WORK THAT OCCUPIES A LOCATION FROM 1 TO 12 HOURS.
- SHORT-DURATION WORK THAT OCCUPIES A LOCATION UP TO 1 HOUR.
- MOBILE-WORK THAT MOVES INTERMITTENTLY OR CONTINUOUSLY.

Typical Transition Lengths and Suggested Maximum Spacing of Devices

Posted Speed KPH (MPH)	Formula	Minimum Desirable Taper Lengths (L) Meters (Feet)			Suggested Max. Device Spacing		Suggested Sign Spacing Meters (Feet)
		3.0(10) Offset Meters (feet)	3.3(11) Offset Meters (feet)	3.6(12) Offset Meters (feet)	On a taper Meters (feet)	On a tangent Meters (feet)	
50 (30)	$L = \frac{WS^2}{60}$	45 (150)	50 (165)	55 (180)	9 (30)	15-20 (60-75)	40 (120)
55 (35)		65 (205)	70 (225)	75 (245)	10 (35)	25-25 (70-90)	50 (160)
65 (40)		80 (265)	90 (295)	100 (320)	12 (40)	25-30 (80-100)	75 (240)
70 (45)	L=WS	135 (450)	165 (495)	165 (540)	13 (45)	25-30 (90-110)	100 (320)
80 (50)		150 (500)	165 (550)	180 (600)	15 (50)	30-35 (100-125)	120 (400)
90 (55)		165 (550)	185 (605)	200 (660)	16 (55)	35-40 (110-140)	150 (500)
100 (60)		180 (600)	200 (660)	220 (720)	18 (60)	40-45 (120-150)	180 (600)
105 (65)		195 (650)	215 (715)	235 (780)	19 (65)	40-50 (130-165)	210 (700)
115 (70)		215 (700)	235 (770)	255 (840)	21 (70)	45-55 (140-175)	240 (800)

CITY OF AUSTIN
DEPARTMENT OF PUBLIC WORKS

GENERAL TRAFFIC CONTROL NOTES

RECORD COPY SIGNED
BY SAM ANGOORI

01/04/10

ADOPTED

THE ARCHITECT/ENGINEER ASSUMES RESPONSIBILITY FOR APPROPRIATE USE OF THIS STANDARD.

STANDARD NO.

804S-5

13 OF 13

**PEPPER ROCK PARK
PARKING LOT**
BRUSHY CREEK MUD
16318 GREAT OAKS DR.
ROUND ROCK, TX 78681



Project No: AV0 * 29891

Issued:

Revisions:

No.	Date	Description

Drawn by: NJH

Checked by: NSS

Sheet Title:

STANDARD DETAILS

SD1.24

Sheet Number