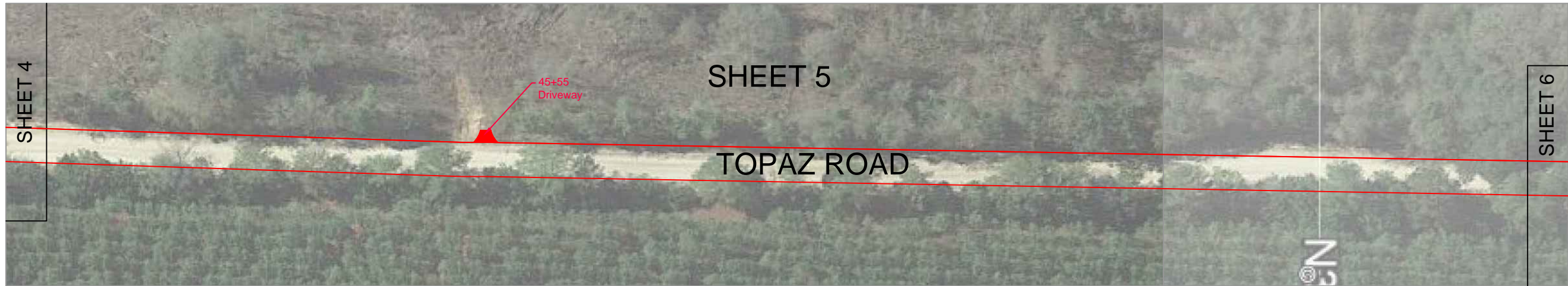



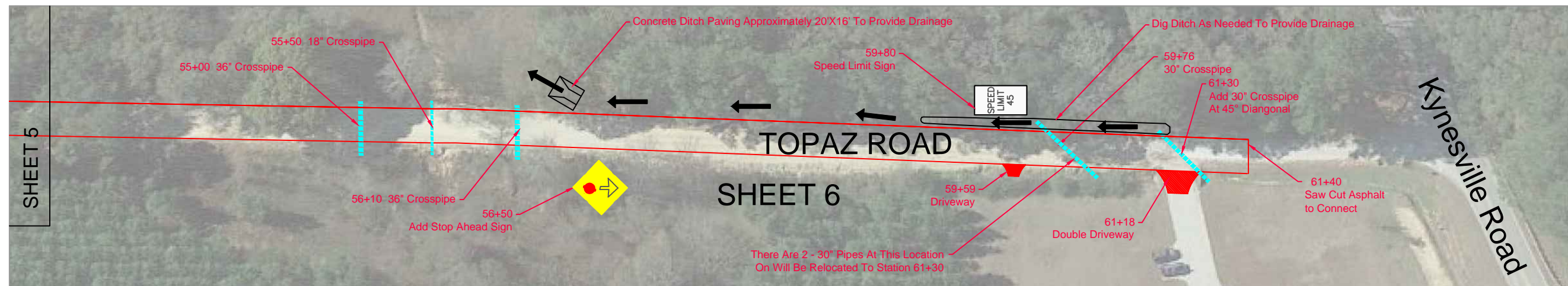
SCALE: 1" = 80'



REVISIONS				ENGINEER OF RECORD	JACKSON COUNTY BOARD OF COUNTY COMMISSIONERS	Plan Sheet	SHEET
REVISION #	BY: INITIALS	DATE	DESCRIPTION				
0	JEB	MAY 9, 2017	ORIGINAL ISSUE	LARRY ALVAREZ, P.E. #58542 County Engineer Off. (850) 482-9677 Cell (850) 573-7491	PROJECT: TOPAZ ROAD		C - 7
1	JEB	MAY 18, 2017	Change Text to Readable Color				



NORTH

 SCALE: 1" = 80'



REVISIONS				ENGINEER OF RECORD	JACKSON COUNTY BOARD OF COUNTY COMMISSIONERS	Plan Sheet	SHEET
REVISION #	BY: INITIALS	DATE	DESCRIPTION				
0	JEB	MAY 9,2017	ORIGINAL ISSUE	LARRY ALVAREZ, P.E. #58542 County Engineer Off. (850) 482-9677 Cell (850) 573-7491	PROJECT: TOPAZ ROAD	Plan Sheet	SHEET C - 9
1	JEB	MAY 8,2017	Change Text to Readable Color				
1	JEB	MAY 18,2017	Corrected Pipe at Sta. 59+76				