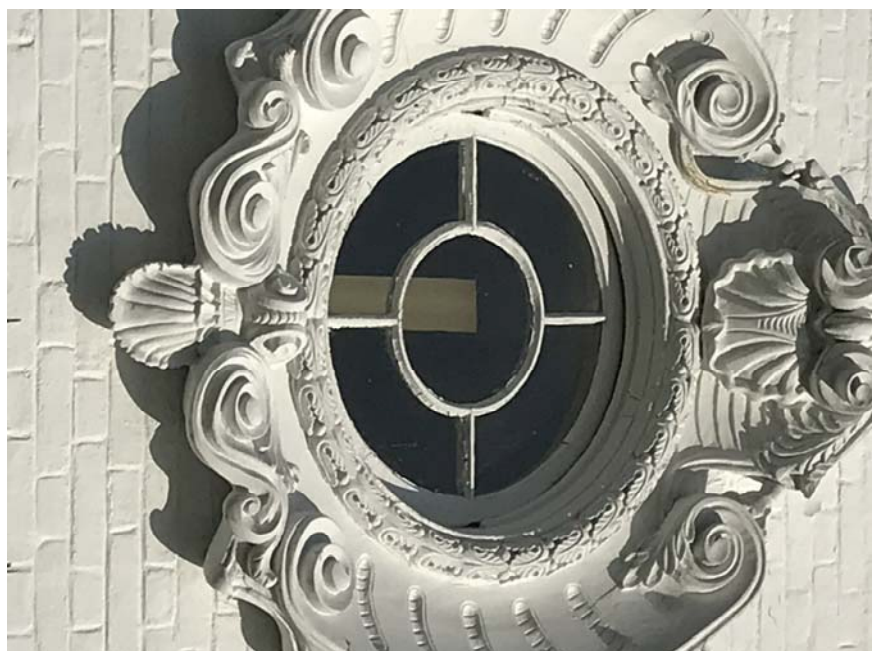
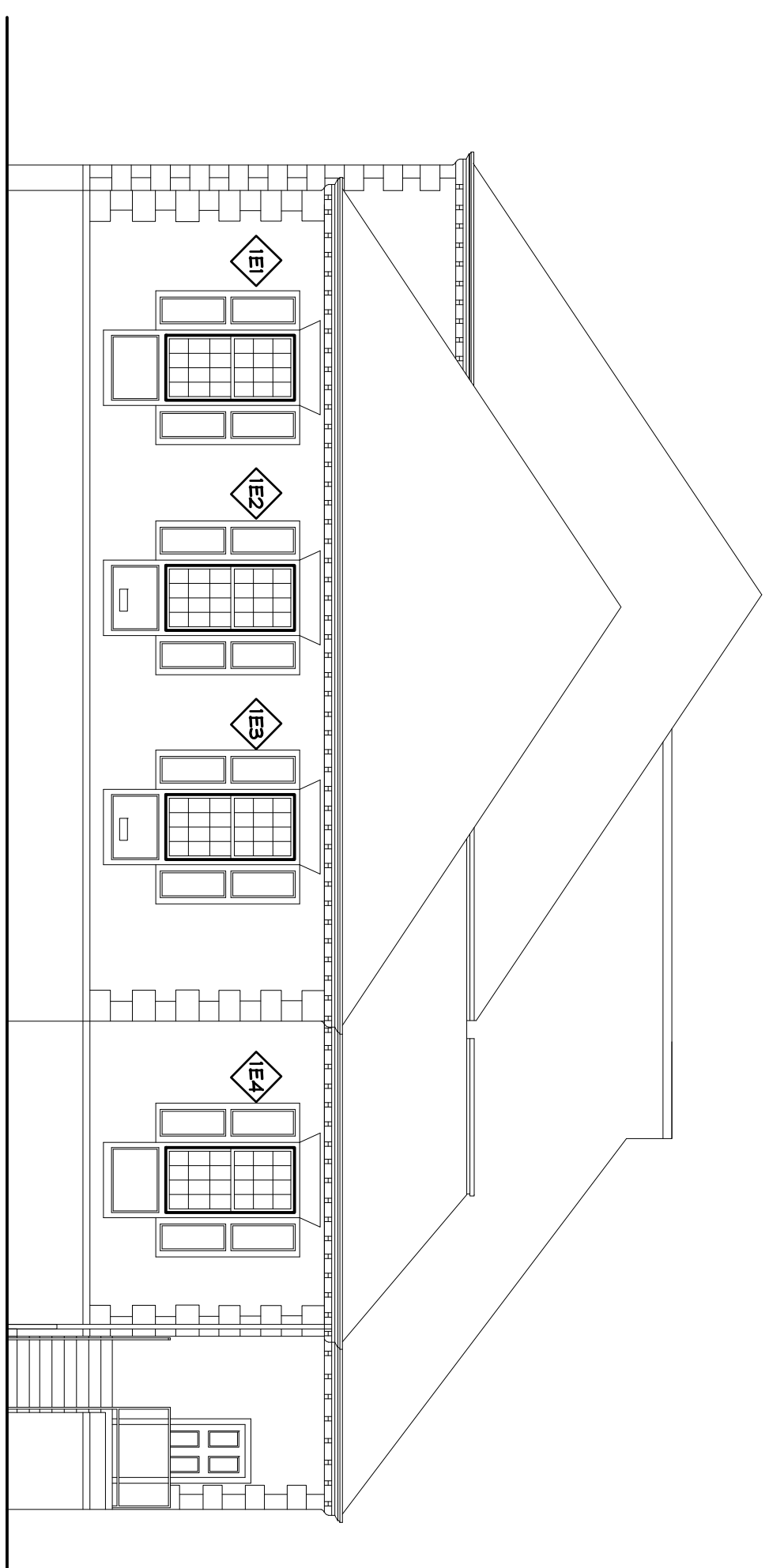
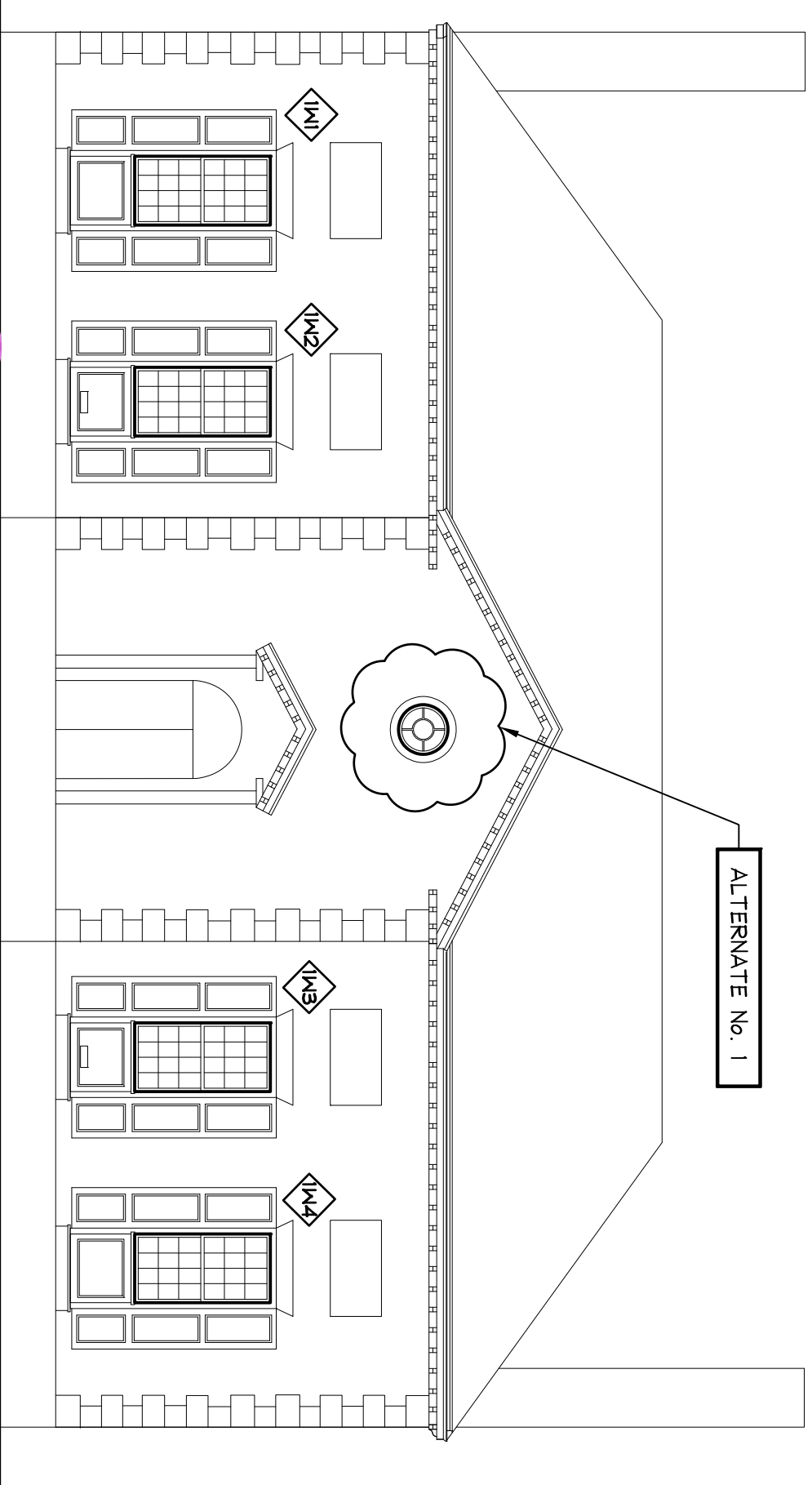


ALTERNATE No. 1



EXTERIOR

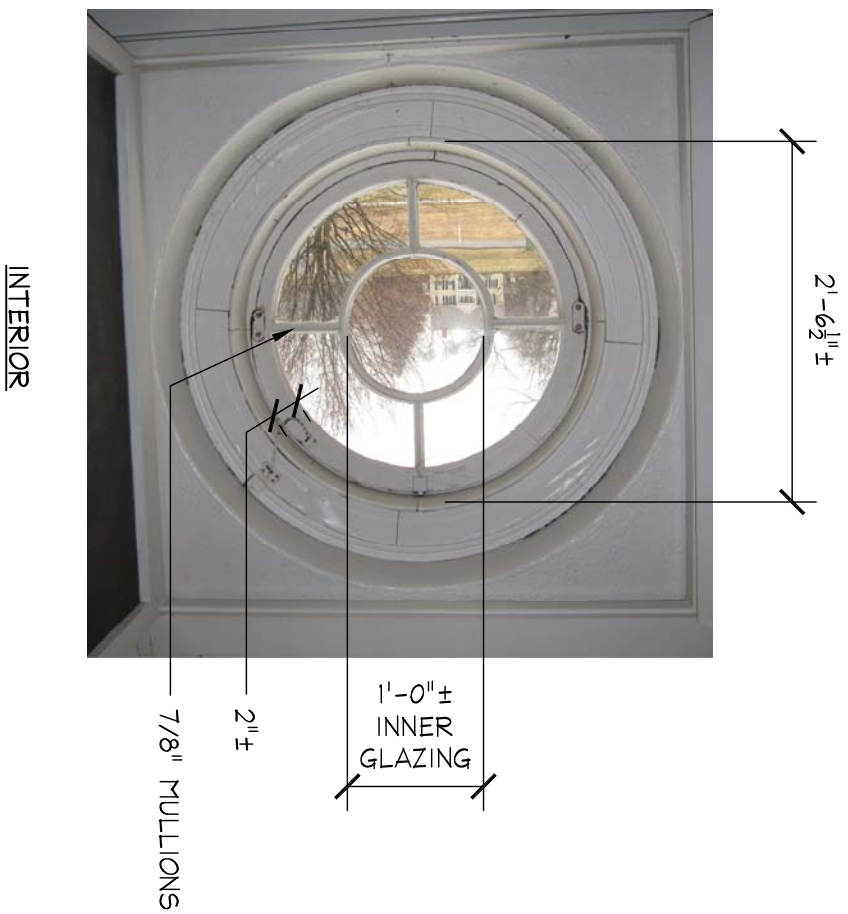


1 EAST ELEVATION

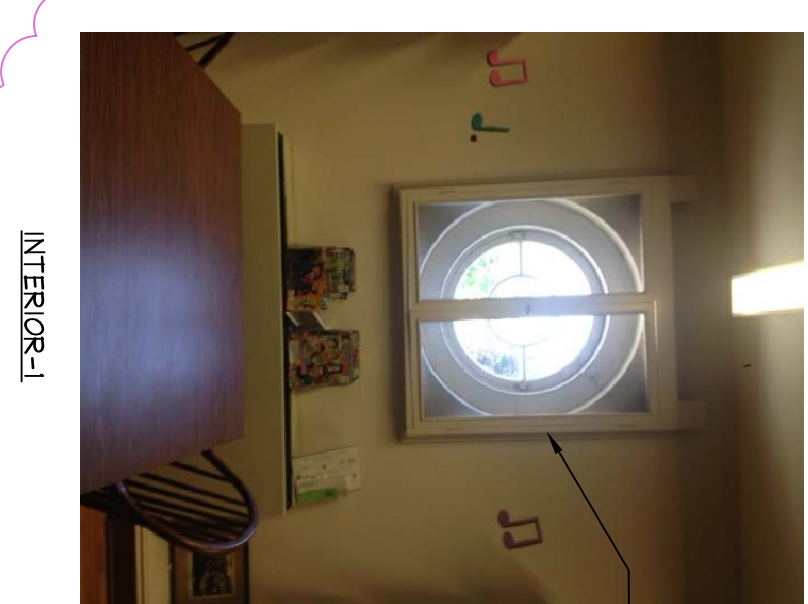
A-202 1/8"=1'-0" 0 4' 8' 16'

2 WEST ELEVATION

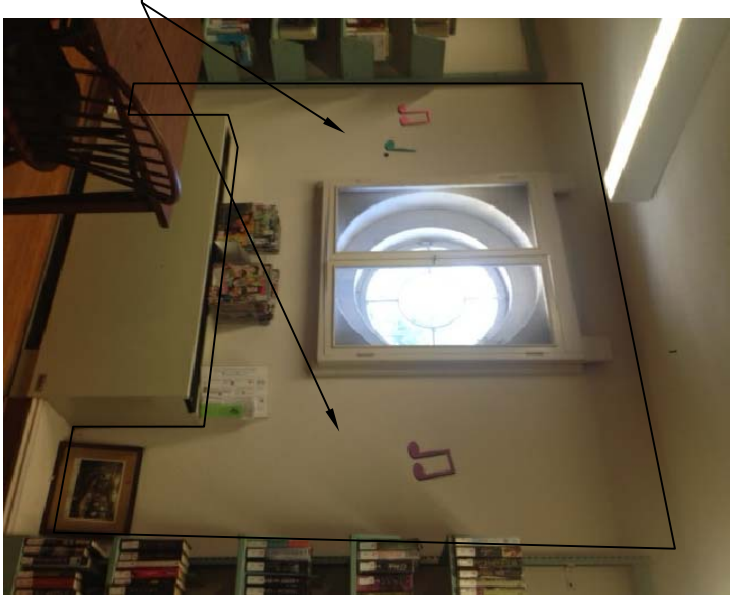
A-202 1/8"=1'-0" 0 4' 8' 16'



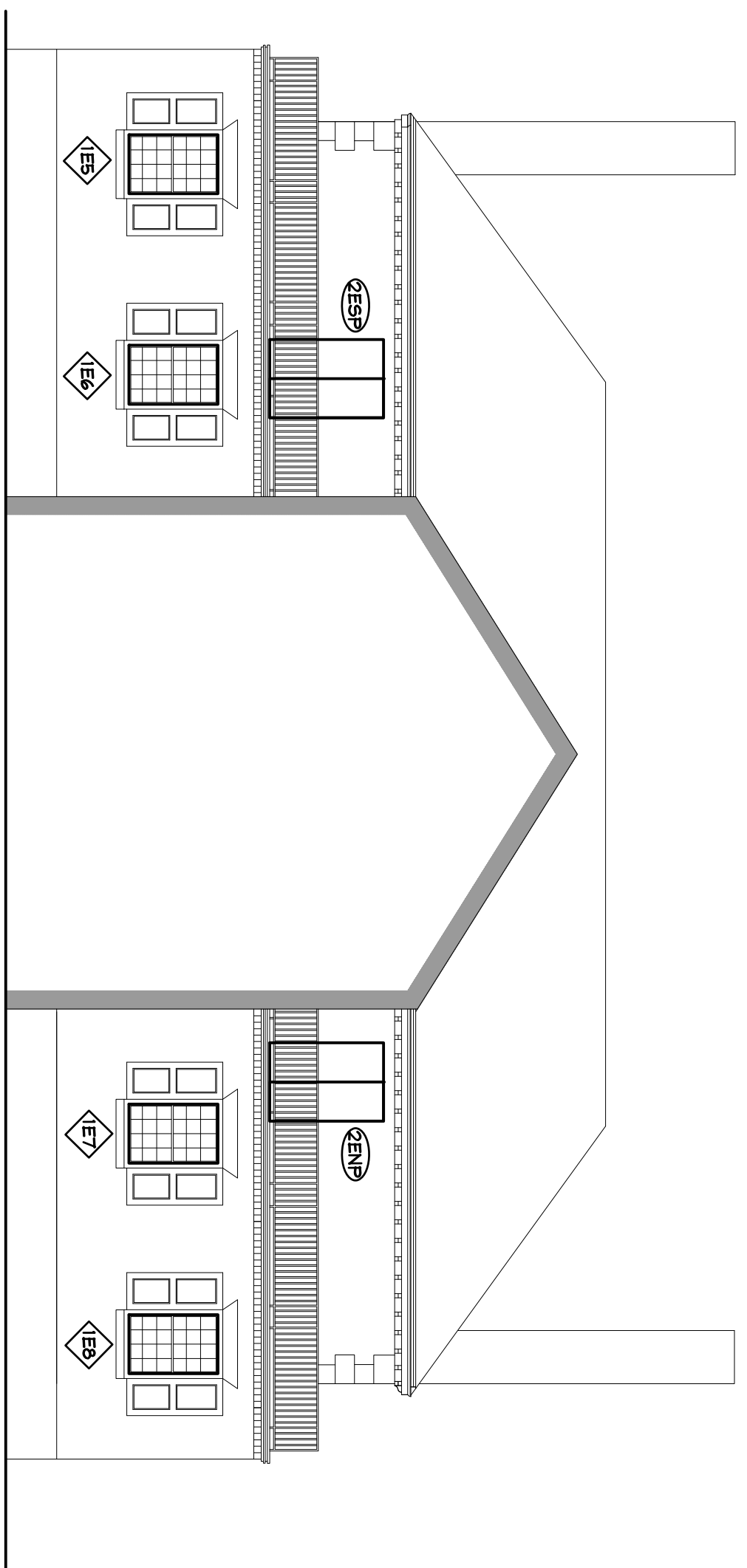
INTERIOR



INTERIOR-1



INTERIOR-2



3 EAST ELEVATION/SECTION

A-202 1/8"=1'-0" 0 4' 8' 16'

4 MAIN ENTRANCE VESTIBULE ELEVATIONS

A-202 N.T.S.



INTERIOR-LEFT



INTERIOR-CENTER



INTERIOR-RIGHT



EXTERIOR-LEFT

WRAP ALL EXTERIOR SILL MATERIAL CLADDING



EXTERIOR-CENTER



EXTERIOR-RIGHT

NOTE:
REMOVE ALL WOOD TRIM-CASING, AFTER WINDOW REPLACEMENT, PROVIDE PVC TRIM, CUT TO WIDTH OF EXISTING (VARIES) PRIME AND PAINT NEW TRIM

TOWN OF LONGMEADOW

RICHARD SALTER STORRS LIBRARY

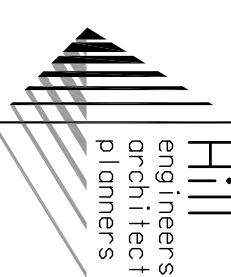
693 LONGMEADOW STREET, LONGMEADOW, MA 01106

PROJECT DESCRIPTION

DRAWING TITLE

WINDOW REPLACEMENT

EAST AND WEST ELEVATIONS



50 Depot Street
Dorchester, MA 01926
(413) 684-0925
44 Spring Street
Adams, MA 01220
(413) 743-0013
www.hillengineers.com

PRELIMINARY
NOT TO BE
USED FOR
CONSTRUCTION

REV.	DESCRIPTION	DR'N	CK'D.	DATE
A	ISSUED FOR CLIENT REVIEW	DB	DB	03/09/18
B	ISSUED FOR BIDDING	DB	DB	05/18/18
C	UPDATED FOR BIDDING	JOR	JOR	07/02/18

A COPY OF THE DATA IN THIS DRAWING FILE IS MAINTAINED AT THE OFFICES OF HILL ENGINEERS ARCHITECTS PLANNERS, INC. THE INTERPRETATION, APPLICATION AND REVISION OF THIS DATA IS THE SOLE RESPONSIBILITY OF THE USER.

DRAWN BY: DB
DATE DRAWN: 02/08/18
SCALE: AS NOTED
AP'D BY:

CAD CODE: TOL-8-005-A-202.dwg
GRAPHIC SCALE:

PROJECT NUMBER: TOL-8-005

DRAWING NUMBER: A-202
REV: C