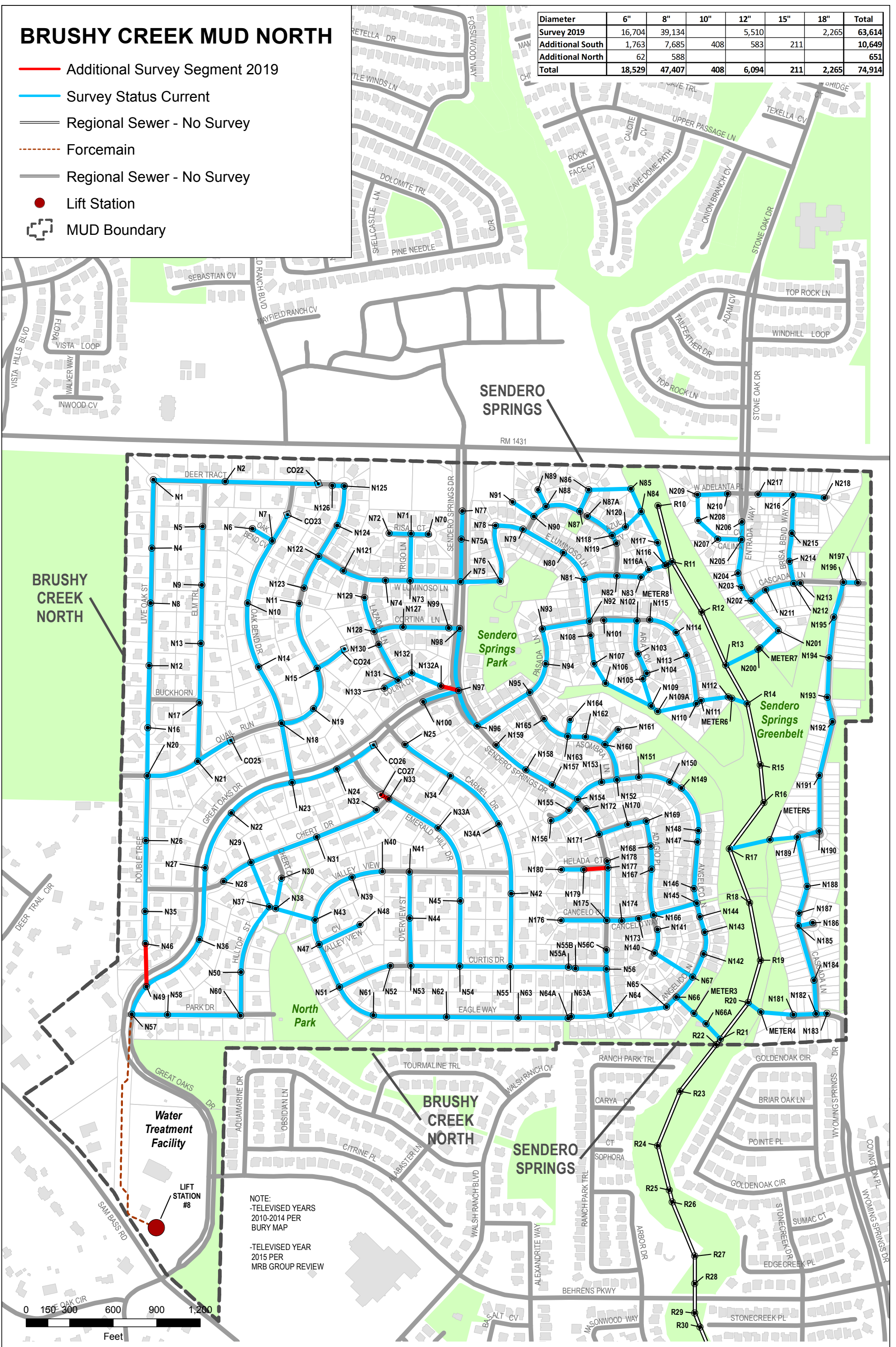


BRUSHY CREEK MUD NORTH

- Additional Survey Segment 2019
- Survey Status Current
- Regional Sewer - No Survey
- - - Forcemain
- Regional Sewer - No Survey
- Lift Station
- MUD Boundary

Diameter	6"	8"	10"	12"	15"	18"	Total
Survey 2019	16,704	39,134		5,510		2,265	63,614
Additional South	1,763	7,685	408	583	211		10,649
Additional North	62	588					651
Total	18,529	47,407	408	6,094	211	2,265	74,914



NOTE:
 -TELEVISED YEARS
 2010-2014 PER
 BURY MAP
 -TELEVISED YEAR
 2015 PER
 MRB GROUP REVIEW

0226.16000
 Figure
 2

BRUSHY CREEK MUNICIPAL UTILITY DISTRICT
16318 GREAT OAKS DR, ROUND ROCK, TEXAS 78681
SANITARY SEWER SYSTEM - 2019 SURVEY

Drawn By: T JV
 Scale: 1" = 600'
 @ 11" x 17"
 Date: NOV 2018



MRB | group

MRB Group, P.C. - TBPE Firm Number: F-10615
 8834 N. Capital of Texas Hwy, Suite 147, Austin, Texas 78759 Tel. 512-627-6459
 Corporate Office: 145 Culver Road, Suite 100, Rochester, New York 14620 Tel. 585-381-9250
 www.mrbgroup.com