

2019 Shaded Fuel Break Trimming—red line indicates fuel break. Green shaded areas are environmental preserves—no vehicles, fuel or chemicals in these areas.

FM 1431 to Sendero Section 6 pond



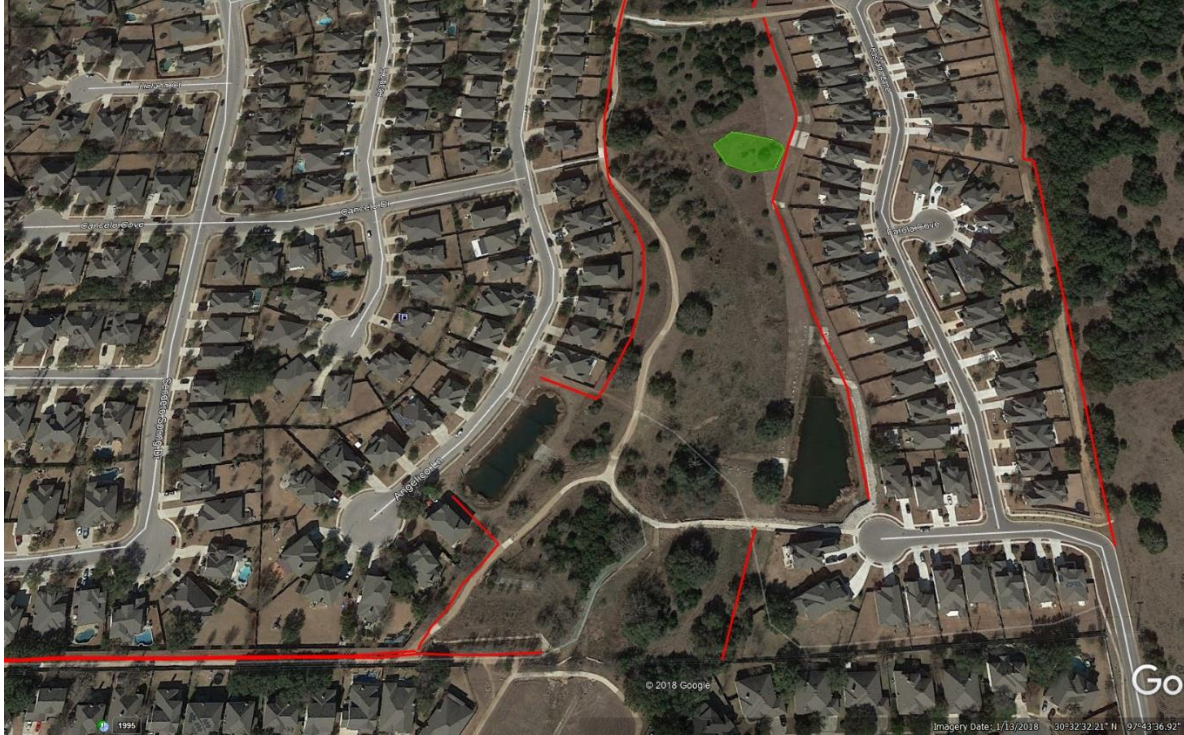
2019 Shaded Fuel Break Trimming—red line indicates fuel break. Green shaded areas are environmental preserves—no vehicles, fuel or chemicals in these areas.

Pasada Lane , Angelico Ln and Cascada Lane



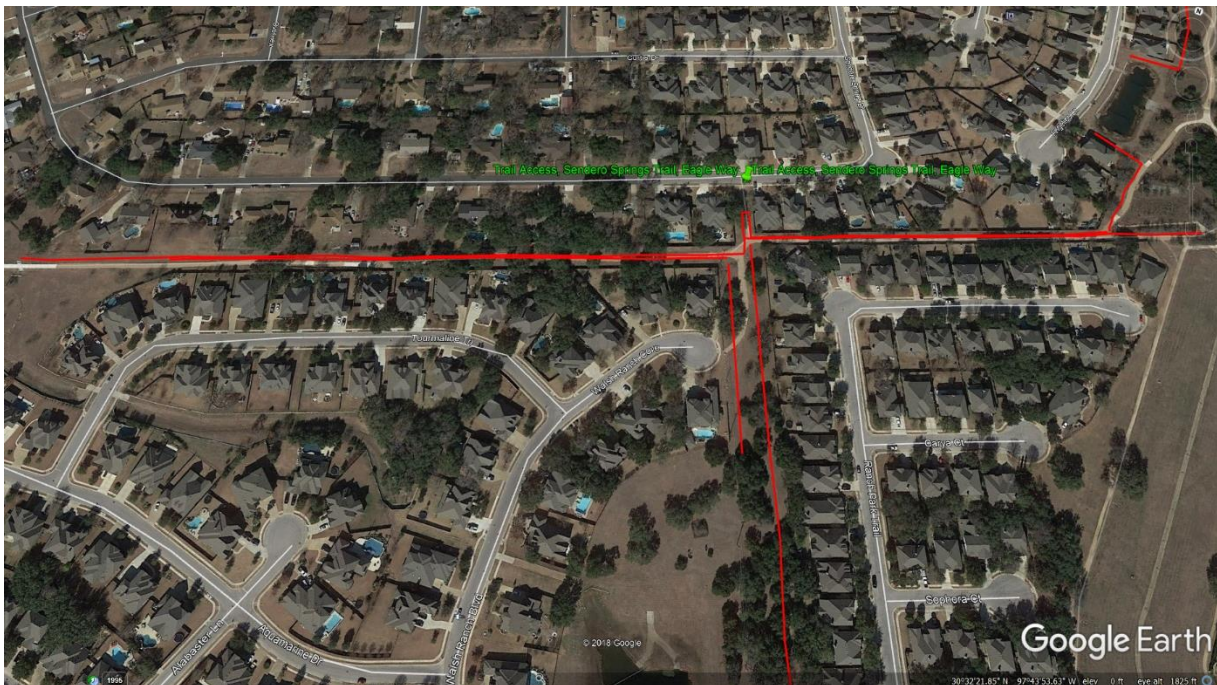
2019 Shaded Fuel Break Trimming—red line indicates fuel break. Green shaded areas are environmental preserves—no vehicles, fuel or chemicals in these areas.

Cancelo Lane, Angelico Ln and Cascada Lane to Section 7 pond



2019 Shaded Fuel Break Trimming—red line indicates fuel break. Green shaded areas are environmental preserves—no vehicles, fuel or chemicals in these areas.

Eagle Way from North Park to Section 7 pond, top part of 100' Easement



2019 Shaded Fuel Break Trimming—red line indicates fuel break. Green shaded areas are environmental preserves—no vehicles, fuel or chemicals in these areas.

Middle section of 100' Easement crossing Behrens's Parkway

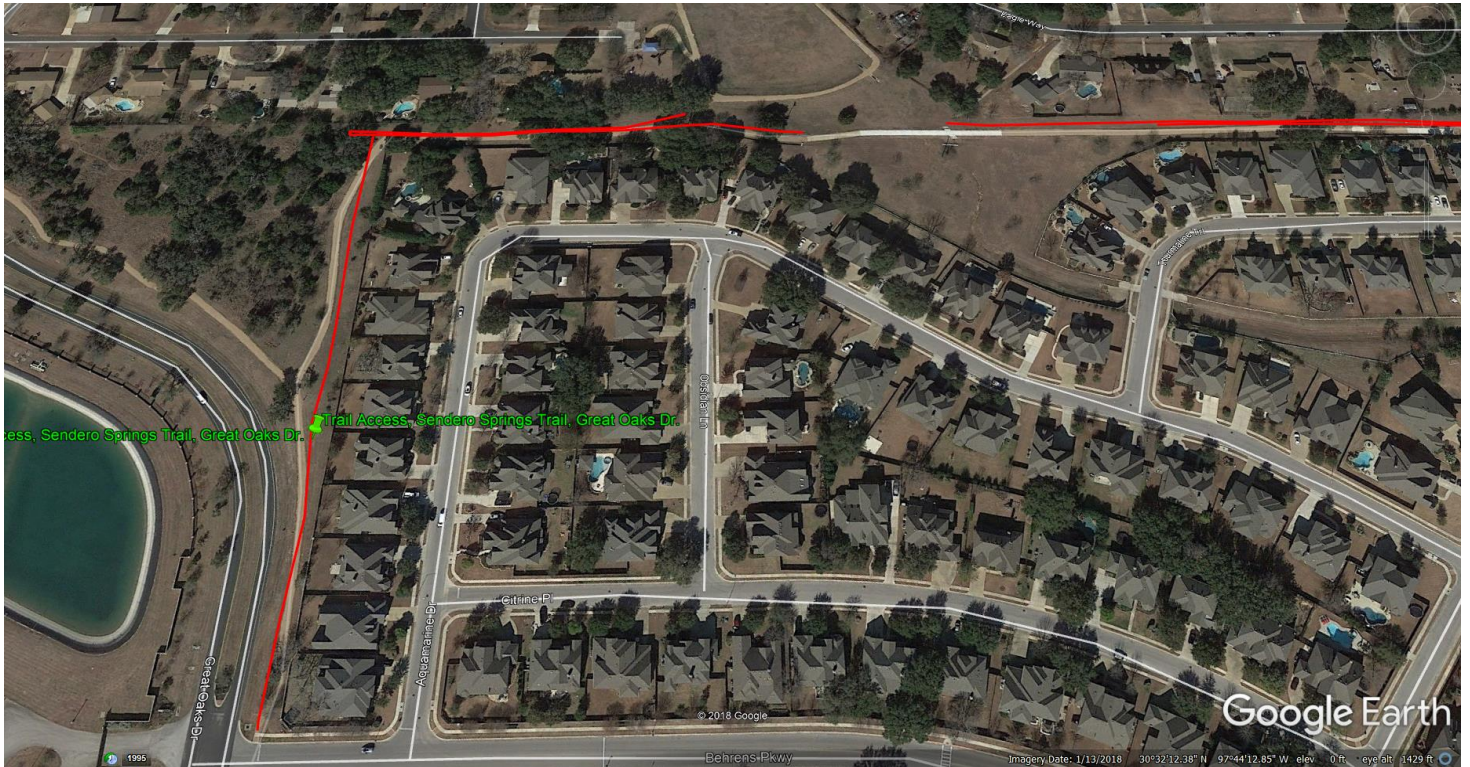


2019 Shaded Fuel Break Trimming 2019 Shaded Fuel Break Trimming—red line indicates fuel break. Green shaded areas are environmental preserves—no vehicles, fuel or chemicals in these areas.



2019 Shaded Fuel Break Trimming 2019 Shaded Fuel Break Trimming—red line indicates fuel break. Green shaded areas are environmental preserves—no vehicles, fuel or chemicals in these areas.

Trail adjacent to Great Oaks to North Park



2019 Shaded Fuel Break Trimming 2019 Shaded Fuel Break Trimming—red line indicates fuel break. Green shaded areas are environmental preserves—no vehicles, fuel or chemicals in these areas.

Sendero Springs Park

