

FIRE ALARM GENERAL NOTES

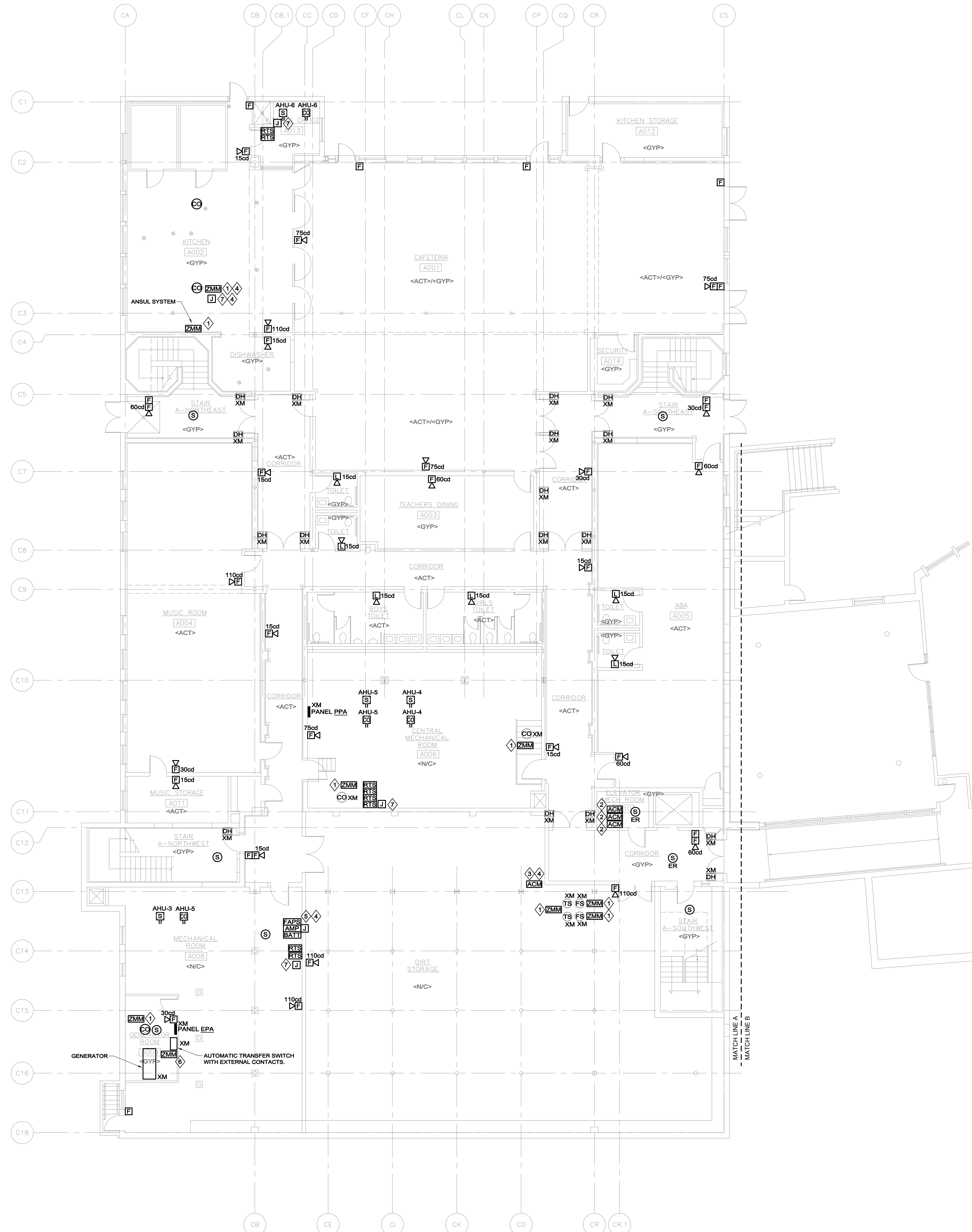
- REFER TO DRAWING EF0.00 FOR LEGEND, SYMBOLS AND GENERAL NOTES.

FIRE ALARM / POWER KEYNOTES

- ◆ ADDRESSABLE MONITOR MODULES SHALL BE INSTALLED AND WIRED TO MONITOR FIRE ALARM SYSTEM INPUTS. MONITORED SYSTEMS INCLUDE ANSUL, CARBON MONOXIDE DETECTOR, AND SPRINKLER SYSTEM, AS NOTED ON PLAN.
- ◆ ADDRESSABLE CONTROL MODULES SHALL SIGNAL TO EXISTING ELEVATOR RECALL SYSTEM INPUTS & FUTURE FIRE HAT CONNECTION.
- ◆ PROVIDE ADDRESSABLE CONTROL MODULE(S); INTERCONNECT TO SIGNAL TO EXISTING DOOR-HOLDER SYSTEM, TO RELEASE FIRE DOORS UPON GENERAL ALARM.
- ◆ COORDINATE FINAL LOCATION OF DEVICE OR EQUIPMENT IN FIELD.
- ◆ PROVIDE 120V-1ϕ BRANCH CIRCUIT TO FIRE ALARM TRANSPONDER CABINET FROM PANEL INDICATED ON RISER DIAGRAM.
- ◆ ADDRESSABLE CONTROL MODULE SHALL BE PROVIDED AND WIRED TO MONITOR RUN STATUS AT AUTOMATIC TRANSFER SWITCH, CONNECT TO AVAILABLE CONTACT.
- ◆ PROVIDE 20A-1P CIRCUIT BREAKER IN PANEL 'PPA', PROVIDE 120V-1ϕ BRANCH CIRCUIT TO J-BOX FOR SUPPORT OF CARBON MONOXIDE DETECTORS

NOTES:

- REFER TO SPECIFICATIONS, DETAILS, AND CONTROL DRAWINGS FOR ADDITIONAL INFORMATION.
- REFER TO DETECTOR SPACING DETAIL FOR MINIMUM SPACING REQUIREMENTS OF SMOKE DETECTORS INSTALLED ADJACENT TO HVAC DIFFUSERS.



This CAD Document is an illustration of professional services, and shall not be used, in whole or in part, for any project other than for which it was created without the expressed written consent of NV5. Any reproduction, reuse, modification or alteration, including automated conversion of this document shall be at the user's sole risk without liability or legal recourse to NV5.

At the request of [IDENTIFY PARTY], this [NAME OF DELIVERABLE] (REPORT, DRAWINGS, ETC.) has been expedited to [Client] (Name, [Name]), is hereby notified that NV5 did not have an opportunity to conduct its industry standard quality control procedures. Accordingly, Client agrees that the [NAME OF DELIVERABLE] is subject to revision, including but not limited to contractor change orders or omissions, in connection with [NAME OF DELIVERABLE].

REVISIONS

DATE	CHK	DESCRIPTION

SEAL

PROJECT

NUMBER
20190266

DATE
05/24/19

LONGMEADOW
CENTER SCHOOL
FIRE ALARM
REPLACEMENT

DRAWING

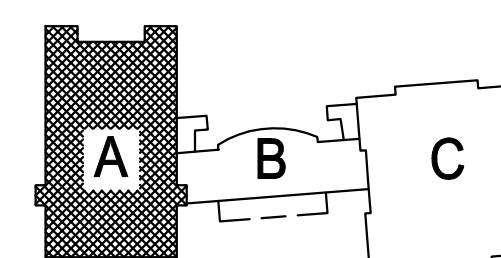
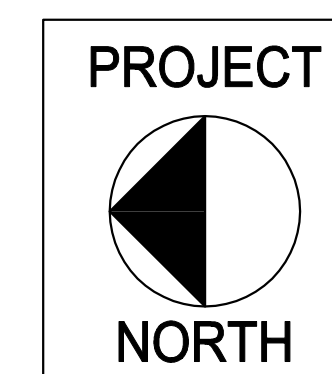
DRAWN BY
JRP

CHECKED BY
KEG

SCALE
1/8" = 1'-0"

ELECTRICAL
FIRE ALARM
A WING
LOWER LEVEL
NEW WORK

ISSUE FOR BID
07-03-19



EF2.00

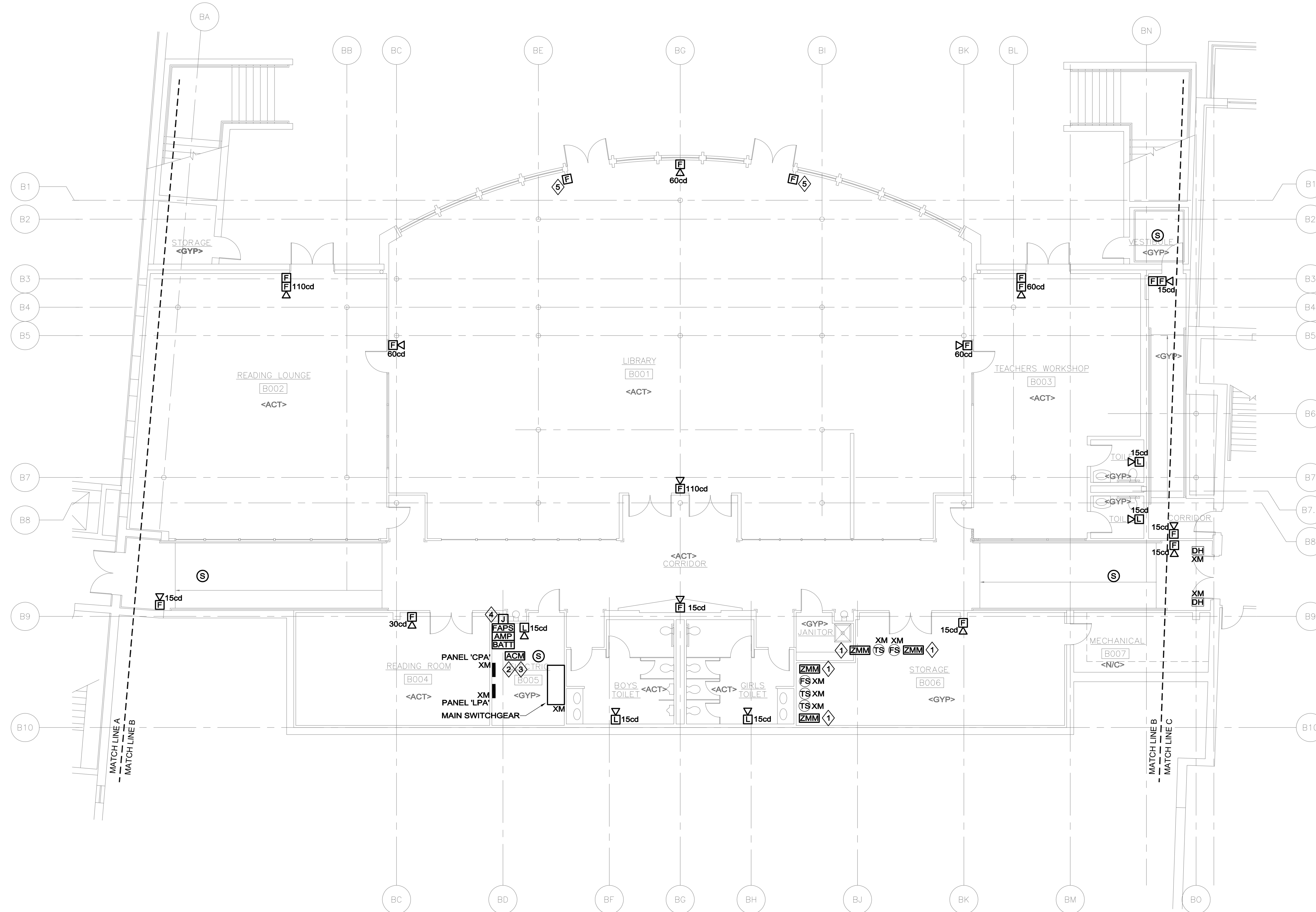
FIRE ALARM GENERAL NOTES

- REFER TO DRAWING EF0.00 FOR LEGEND, SYMBOLS AND GENERAL NOTES.

FIRE ALARM / POWER KEYNOTES	
1	ADDRESSABLE MONITOR MODULES SHALL BE INSTALLED AND WIRED TO MONITOR EXISTING FIRE ALARM SYSTEM INPUTS. MONITORED SYSTEMS INCLUDE ANSUL, CARBON MONOXIDE DETECTOR, AND SPRINKLER SYSTEM, AS NOTED ON PLAN.
2	PROVIDE ADDRESSABLE CONTROL MODULE(S), INTERCONNECT TO SIGNAL TO EXISTING DOOR-HOLDER SYSTEM, TO RELEASE FIRE DOORS UPON GENERAL ALARM.
3	COORDINATE FINAL LOCATION OF DEVICE OR EQUIPMENT IN FIELD.
4	PROVIDE 120V-1 ϕ BRANCH CIRCUIT TO FIRE ALARM TRANSDUCER CABINET FROM PANEL INDICATED ON RISER DIAGRAM.
5	PULL STATION WIRING SHALL BE FISHED IN CASEMENT OR INSTALLED IN METALLIC SURFACE RACEWAY (EQUAL TO WIREMOLD 700S) AS DETERMINED IN THE FIELD.

NOTES:

- REFER TO SPECIFICATIONS, DETAILS, AND CONTROL DRAWINGS FOR ADDITIONAL INFORMATION.
- REFER TO DETECTOR SPACING DETAIL FOR MINIMUM SPACING REQUIREMENTS OF SMOKE DETECTORS INSTALLED ADJACENT TO HVAC DIFFUSERS.



This CAD Document is an instrument of professional service, and shall not be used, in whole or in part, for any project other than for which it was created without the expressed, written consent of NIV5. Any reproduction, use, reuse, modification or alteration, including automated conversion of this document shall be at the user's sole risk without liability or legal recourse to NIV5.

At the request of [IDENTIFY PARTY], this [NAME OF DELIVERABLE (REPORT, DRAWINGS, ETC.)] has been updated to [Client] (date), it is hereby notified that NIV5 did not have an opportunity to conduct its industry standard quality control procedures. Accordingly, Client agrees that the [NAME OF DELIVERABLE] is subject to revision, including but not limited to contractor change orders or other claims, in connection with [NAME OF DELIVERABLE].

REVISIONS

DATE	CHK	DESCRIPTION

SEAL

PROJECT

NUMBER
20190266

DATE
05/24/19

LONGMEADOW
CENTER SCHOOL
FIRE ALARM
REPLACEMENT

DRAWING

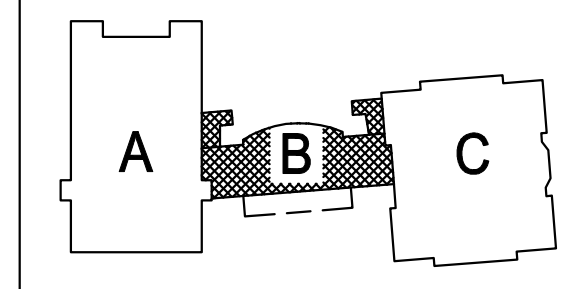
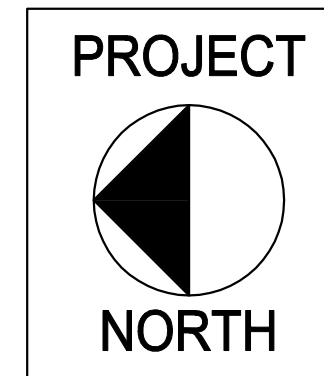
DRAWN BY
JRP

CHECKED BY
KEG

SCALE
1/8" = 1'-0"

ELECTRICAL
FIRE ALARM
B WING
LOWER LEVEL
NEW WORK

ISSUE FOR BID
07-03-19



EF2.01

FIRE ALARM GENERAL NOTES

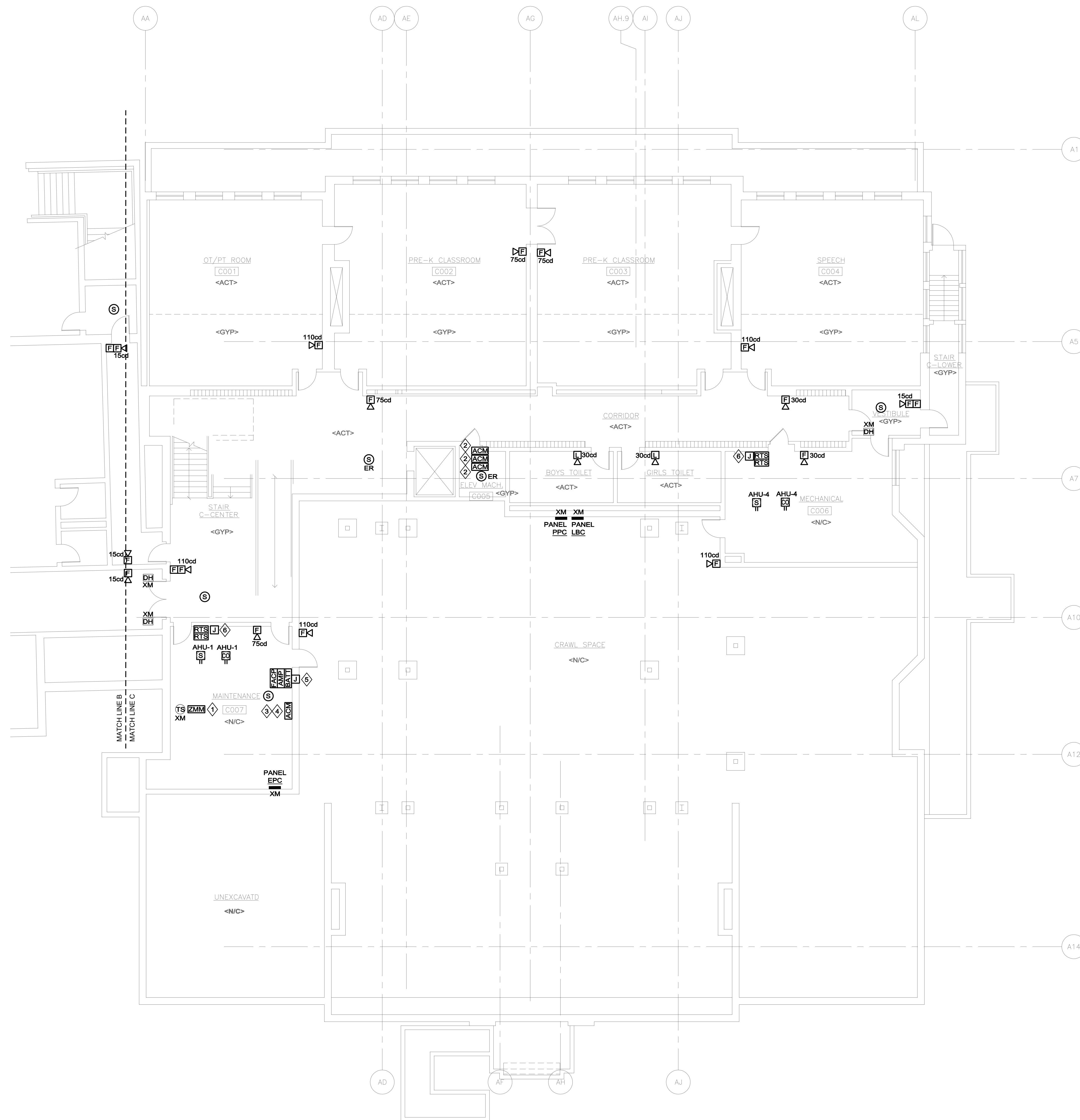
- REFER TO DRAWING EF0.00 FOR LEGEND, SYMBOLS AND GENERAL NOTES.

FIRE ALARM / POWER KEYNOTES

- ADDRESSABLE MONITOR MODULES SHALL BE INSTALLED AND WIRED TO MONITOR EXISTING FIRE ALARM SYSTEM INPUTS. MONITORED SYSTEMS INCLUDE ANSUL, CARBON MONOXIDE DETECTOR, AND SPRINKLER SYSTEM, AS NOTED ON PLAN.
- ADDRESSABLE CONTROL MODULES SHALL SIGNAL TO EXISTING ELEVATOR RECALL SYSTEM INPUTS & FUTURE FIRE HAT CONNECTION.
- PROVIDE ADDRESSABLE CONTROL MODULE(S), INTERCONNECT TO SIGNAL TO EXISTING DOOR-HOLDER SYSTEM, TO RELEASE FIRE DOORS UPON GENERAL ALARM.
- COORDINATE FINAL LOCATION OF DEVICE OR EQUIPMENT IN FIELD.
- PROVIDE 120V-14 BRANCH CIRCUIT TO FIRE ALARM CONTROL PANEL FROM PANEL INDICATED ON RISER DIAGRAM.
- PROVIDE 20A-1P CIRCUIT BREAKER IN PANEL "PPC"; PROVIDE 120V-14 BRANCH CIRCUIT TO J-BOX FOR SUPPORT OF CARBON MONOXIDE DETECTORS.

NOTES:

- REFER TO SPECIFICATIONS, DETAILS, AND CONTROL DRAWINGS FOR ADDITIONAL INFORMATION.
- REFER TO DETECTOR SPACING DETAIL FOR MINIMUM SPACING REQUIREMENTS OF SMOKE DETECTORS INSTALLED ADJACENT TO HVAC DIFFUSERS.



This CAD Document is an instrument of professional service, and shall not be used, in whole or in part, for any project other than for which it was created without the expressed written consent of NV5. Any reproduction, use, reuse, modification or alteration, including automated conversion of this document shall be at the user's sole risk without liability on legal exposure to NV5.

REVISIONS

▲ DATE CHK DESCRIPTION

DATE	CHK	DESCRIPTION

SEAL

PROJECT

NUMBER 20190266
DATE 05/24/19

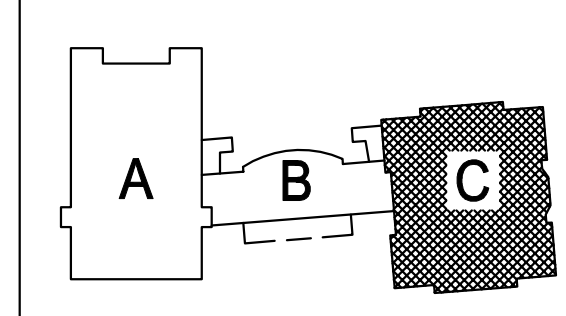
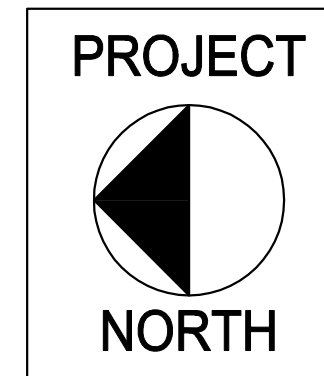
LONGMEADOW CENTER SCHOOL
FIRE ALARM
REPLACEMENT

DRAWING

DRAWN BY JRP
CHECKED BY KEG
SCALE 1/8" = 1'-0"

ELECTRICAL
FIRE ALARM
C WING
LOWER LEVEL
NEW WORK

ISSUE FOR BID
07-03-19



EF2.02

FIRE ALARM GENERAL NOTES

- REFER TO DRAWING EF0.00 FOR LEGEND, SYMBOLS AND GENERAL NOTES.

FIRE ALARM / POWER KEYNOTES

1	ADDRESSABLE MONITOR MODULES SHALL BE INSTALLED AND WIRED TO MONITOR EXISTING FIRE ALARM SYSTEM INPUTS. MONITORED SYSTEMS INCLUDE ANSUL, CARBON MONOXIDE DETECTOR, AND SPRINKLER SYSTEM, AS NOTED ON PLAN.
2	PROVIDE ADDRESSABLE CONTROL MODULE(S), INTERCONNECT TO SIGNAL TO EXISTING DOOR-HOLDER SYSTEM, TO RELEASE FIRE DOORS UPON GENERAL ALARM
3	COORDINATE FINAL LOCATION OF DEVICE OR EQUIPMENT IN FIELD.
4	PROVIDE 120V-14 BRANCH CIRCUIT TO FIRE ALARM TRANSPONDER CABINET FROM PANEL INDICATED ON RISER DIAGRAM

NOTES:

- REFER TO SPECIFICATIONS, DETAILS, AND CONTROL DRAWINGS FOR ADDITIONAL INFORMATION.
- REFER TO DETECTOR SPACING DETAIL FOR MINIMUM SPACING REQUIREMENTS OF SMOKE DETECTORS INSTALLED ADJACENT TO HVAC DIFFUSERS.

This CAD Document is an instrument of professional service, and shall not be used, in whole or in part, for any project other than for which it was created without the registered architect's consent of NV5. Any reproduction, reuse, modification or alteration, including automated conversion of this document shall be at the user's sole risk without liability or legal recourse to NV5.

At the request of [IDENTIFY PARTY], this [NAME OF DELIVERABLE] (REPORT, DRAWINGS, ETC.) has been prepared to [Client] (Name, [Name]), is hereby notified that NV5 did not have an opportunity to conduct its industry standard quality control procedures. Accordingly, Client agrees that the [NAME OF DELIVERABLE] is subject to revision, including but not limited to correcting change orders or omissions, in connection with [NAME OF DELIVERABLE].

REVISIONS

DATE	CHK	DESCRIPTION

SEAL

PROJECT

NUMBER
20190286

DATE
05/24/19

**LONGMEADOW
CENTER SCHOOL
FIRE ALARM
REPLACEMENT**

DRAWING

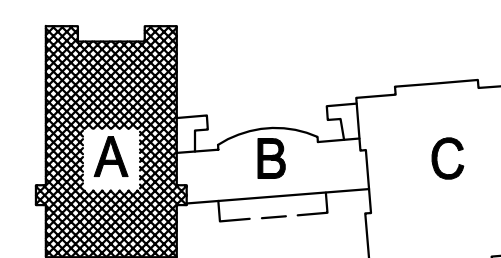
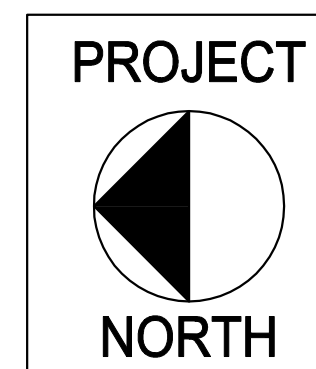
DRAWN BY
JRP

CHECKED BY
KEG

SCALE
1/8" = 1'-0"

ELECTRICAL
FIRE ALARM
A WING
MAIN LEVEL
NEW WORK

ISSUE FOR BID
07-03-19



EF2.10

