

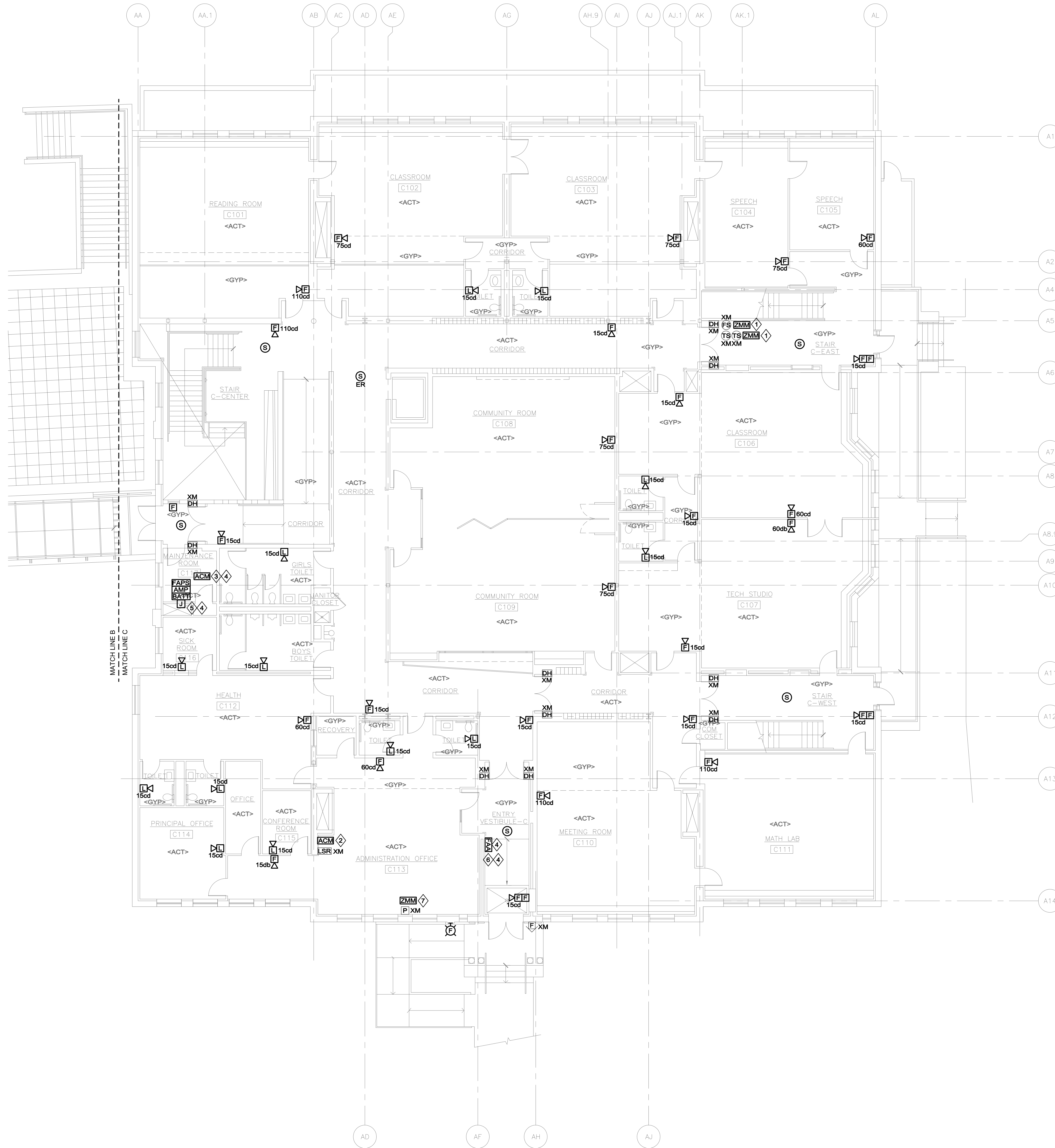
FIRE ALARM GENERAL NOTES

- REFER TO DRAWING EF0.00 FOR LEGEND, SYMBOLS AND GENERAL NOTES.

FIRE ALARM / POWER KEYNOTES

- ◆ ADDRESSABLE MONITOR MODULES SHALL BE INSTALLED AND WIRED TO MONITOR EXISTING FIRE ALARM SYSTEM INPUTS. MONITORED SYSTEMS INCLUDE ANSUL, CARBON MONOXIDE DETECTOR, AND SPRINKLER SYSTEM, AS NOTED ON PLAN.
- ◆ PROVIDE ADDRESSABLE CONTROL MODULE(S), INTERCONNECT TO DISENGAGE PAGING SYSTEM IN THE EVENT OF FIRE ALARM ENGAGEMENT.
- ◆ PROVIDE ADDRESSABLE CONTROL MODULE(S), INTERCONNECT TO SIGNALS TO EXISTING DOOR-HOLDER SYSTEM, TO RELEASE FIRE DOORS UPON GENERAL ALARM
- ◆ COORDINATE FINAL LOCATION OF DEVICE OR EQUIPMENT IN FIELD.
- ◆ PROVIDE 120V-16 BRANCH CIRCUIT TO FIRE ALARM TRANSDUCER CABINET FROM PANEL INDICATED ON RISER DIAGRAM
- ◆ PROVIDE GRAPHIC MAP OF BUILDING ADJACENT ANNUNCIATOR
- ◆ PROVIDE ZONE MONITOR MODULE TO MONITOR EXISTING PANIC SWITCH ENGAGEMENT.

- NOTES:
- REFER TO SPECIFICATIONS, DETAILS, AND CONTROL DRAWINGS FOR ADDITIONAL INFORMATION.
 - REFER TO DETECTOR SPACING DETAIL FOR MINIMUM SPACING REQUIREMENTS OF SMOKE DETECTORS INSTALLED ADJACENT TO HVAC DIFFUSERS.



This CAD Document is an instrument of professional service, and shall not be used, in whole or in part, for any project other than for which it was created without the expressed written consent of NV5. Any reproduction, reuse, modification or alteration, including automated conversion of this document shall be at the user's sole risk without liability or legal recourse to NV5. At the request of [IDENTIFY PARTY], this [NAME OF DELIVERABLE] (REPORT, DRAWINGS, ETC.) has been prepared to [Client] Hence, [Client] is hereby notified that NV5 will not have an opportunity to conduct its industry standard quality control procedures. Accordingly, Client agrees that the [NAME OF DELIVERABLE] is subject to revision, including but not limited to correcting change orders or other claims, in connection with [NAME OF DELIVERABLE].

REVISIONS

DATE	CHK	DESCRIPTION

SEAL

PROJECT

NUMBER
20190286

DATE
05/24/19

LONGMEADOW
CENTER SCHOOL
FIRE ALARM
REPLACEMENT

DRAWING

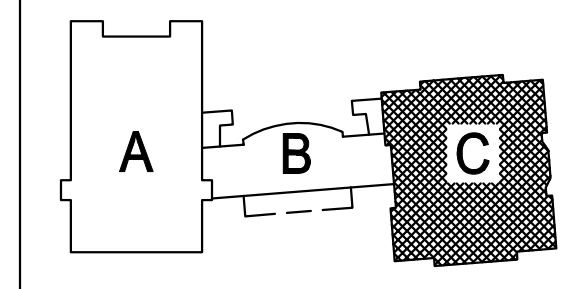
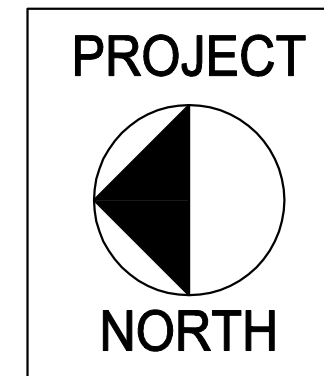
DRAWN BY
JRP

CHECKED BY
KEG

SCALE
1/8" = 1'-0"

ELECTRICAL
FIRE ALARM
C WING
MAIN LEVEL
NEW WORK

ISSUE FOR BID
07-03-19



EF2.11

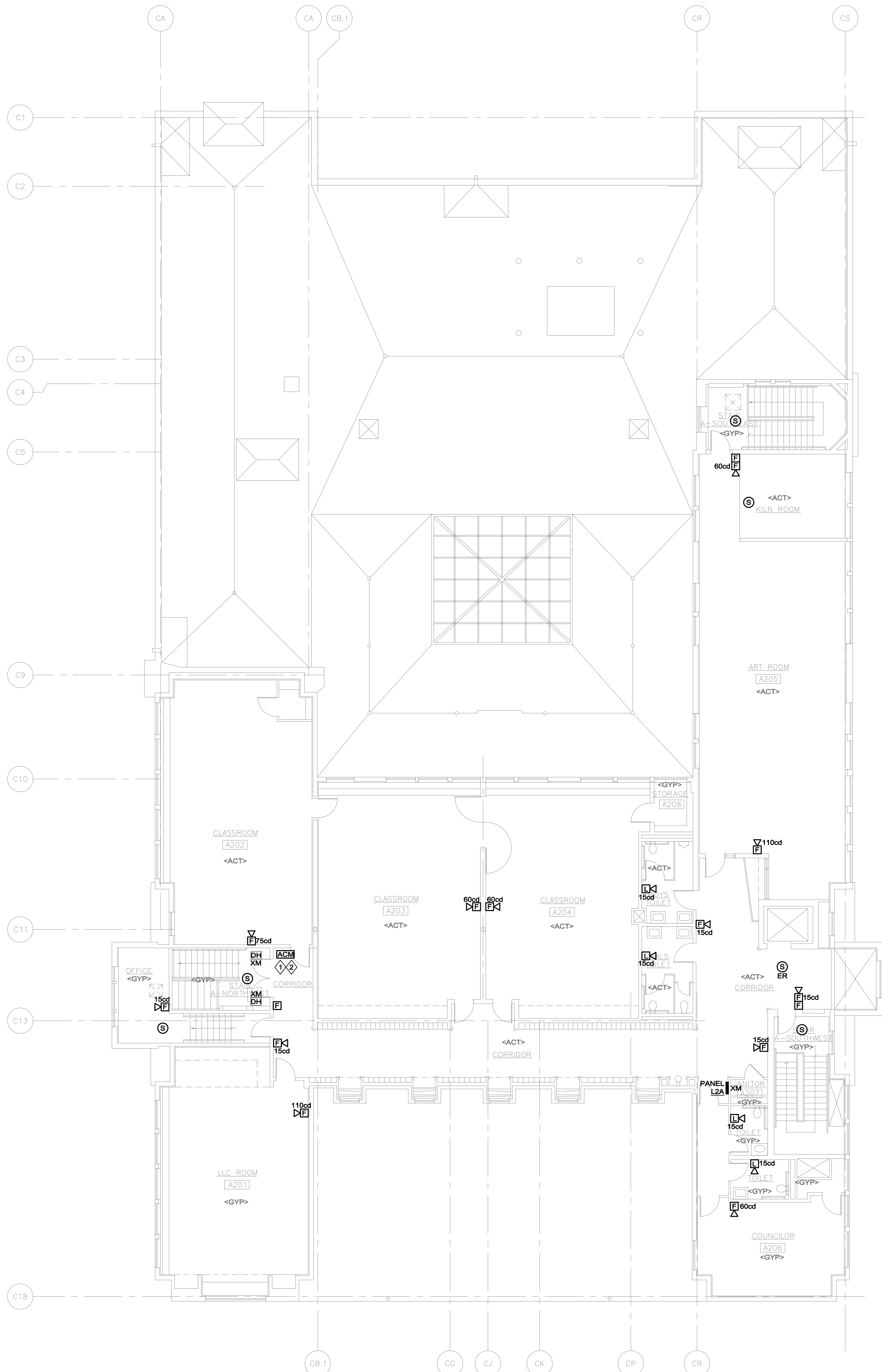
FIRE ALARM GENERAL NOTES

1. REFER TO DRAWING EF0.00 FOR LEGEND, SYMBOLS AND GENERAL NOTES.

FIRE ALARM / POWER KEYNOTES

- ◇ PROVIDE ADDRESSABLE CONTROL MODULE(S), INTERCONNECT TO SIGNAL TO EXISTING DOOR-HOLDER SYSTEM, TO RELEASE FIRE DOORS UPON GENERAL ALARM
- ◇ COORDINATE FINAL LOCATION OF DEVICE OR EQUIPMENT IN FIELD.

NOTES:
 1. REFER TO SPECIFICATIONS, DETAILS, AND CONTROL DRAWINGS FOR ADDITIONAL INFORMATION.
 2. REFER TO DETECTOR SPACING DETAIL FOR MINIMUM SPACING REQUIREMENTS OF SMOKE DETECTORS INSTALLED ADJACENT TO HVAC DIFFUSERS.



This CAD Document is an instrument of professional service, and shall not be used, in whole or in part, for any project other than for which it was created without the expressed written consent of NIV5. Any reproduction, reuse, modification or alteration, including automated conversion of this document shall be at the user's sole risk without liability or legal recourse to NIV5.

REVISIONS		
▲	DATE	CHK DESCRIPTION

SEAL

PROJECT

NUMBER: 20190266
 DATE: 05/24/19

LONGMEADOW CENTER SCHOOL FIRE ALARM REPLACEMENT

DRAWING

DRAWN BY: JRP
 CHECKED BY: KEG
 SCALE: 1/8" = 1'-0"
 ELECTRICAL
 FIRE ALARM
 A WING
 UPPER LEVEL
 NEW WORK

ISSUE FOR BID
07-03-19

PROJECT

NORTH

EF2.20