

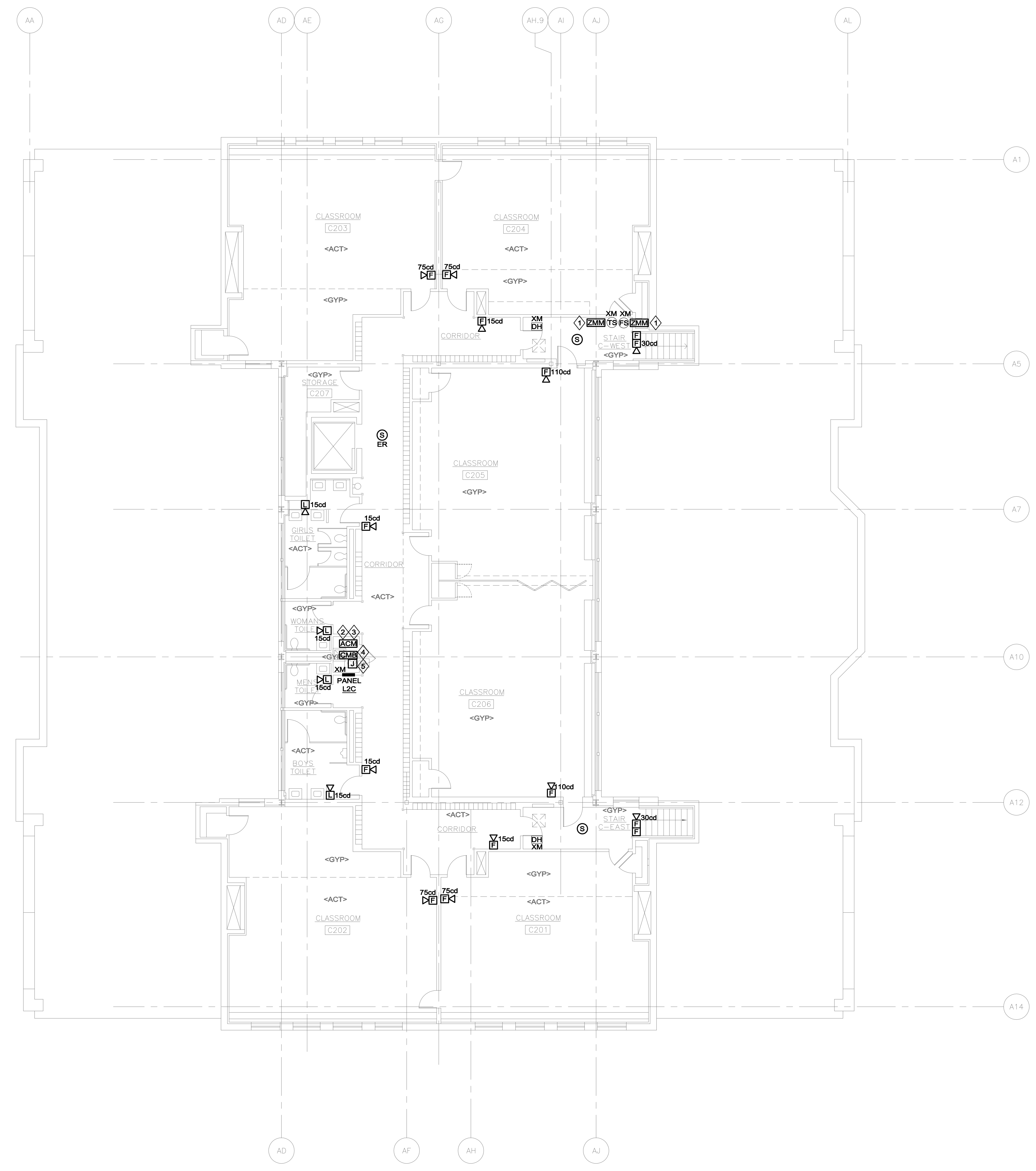
### FIRE ALARM GENERAL NOTES

- REFER TO DRAWING EF0.00 FOR LEGEND, SYMBOLS AND GENERAL NOTES.

### FIRE ALARM / POWER KEYNOTES

- ◇ ADDRESSABLE MONITOR MODULES SHALL BE INSTALLED AND WIRED TO MONITOR EXISTING FIRE ALARM SYSTEM INPUTS. MONITORED SYSTEMS INCLUDE ANSUL, CARBON MONOXIDE DETECTOR, AND SPRINKLER SYSTEM, AS NOTED ON PLAN.
- ◇ PROVIDE ADDRESSABLE CONTROL MODULE(S), INTERCONNECT TO SIGNAL TO EXISTING DOOR-HOLDER SYSTEM, TO RELEASE FIRE DOORS UPON GENERAL ALARM
- ◇ COORDINATE FINAL LOCATION OF DEVICE OR EQUIPMENT IN FIELD.
- ◇ COMMERCIAL FIRE ALARM CELLULAR MASTER BOX COMMUNICATOR. PROVIDE CONNECTION FROM FACP AS DETAILED IN THE RISER DIAGRAM
- ◇ PROVIDE 20A-1P CIRCUIT BREAKER IN PANEL L2C; PROVIDE 120V-1Ø BRANCH CIRCUIT TO J-BOX FOR CONNECTION TO CELLULAR COMMUNICATOR.

- NOTES:
- REFER TO SPECIFICATIONS, DETAILS, AND CONTROL DRAWINGS FOR ADDITIONAL INFORMATION.
  - REFER TO DETECTOR SPACING DETAIL FOR MINIMUM SPACING REQUIREMENTS OF SMOKE DETECTORS INSTALLED ADJACENT TO HVAC DIFFUSERS.



This CADS Document is an instrument of professional service, and shall not be used, in whole or in part, for any project other than for which it was created without the expressed written consent of NIV5. Any unauthorized use, reuse, modification or alteration, including automated conversion of this document shall be at the user's sole risk without liability or legal recourse to NIV5.

At the request of [IDENTIFY PARTY], this [NAME OF DELIVERABLE (REPORT, DRAWINGS, ETC.)] has been expedited to [Client] Hence, [Identify] is hereby notified that NIV5 did not have an opportunity to conduct its industry standard quality control procedures. Accordingly, Client agrees that the [NAME OF DELIVERABLE] is subject to revision, including but not limited to correcting change orders or omissions, in connection with [NAME OF DELIVERABLE].

### REVISIONS

DATE	CHK	DESCRIPTION

### SEAL

### PROJECT

NUMBER: 20190266  
DATE: 05/24/19

### LONGMEADOW CENTER SCHOOL FIRE ALARM REPLACEMENT

### DRAWING

DRAWN BY: JRP  
CHECKED BY: KEG  
SCALE: 1/8" = 1'-0"

ELECTRICAL  
FIRE ALARM  
C WING  
UPPER LEVEL  
NEW WORK

**ISSUE FOR BID**  
07-03-19

PROJECT

NORTH

EF2.21