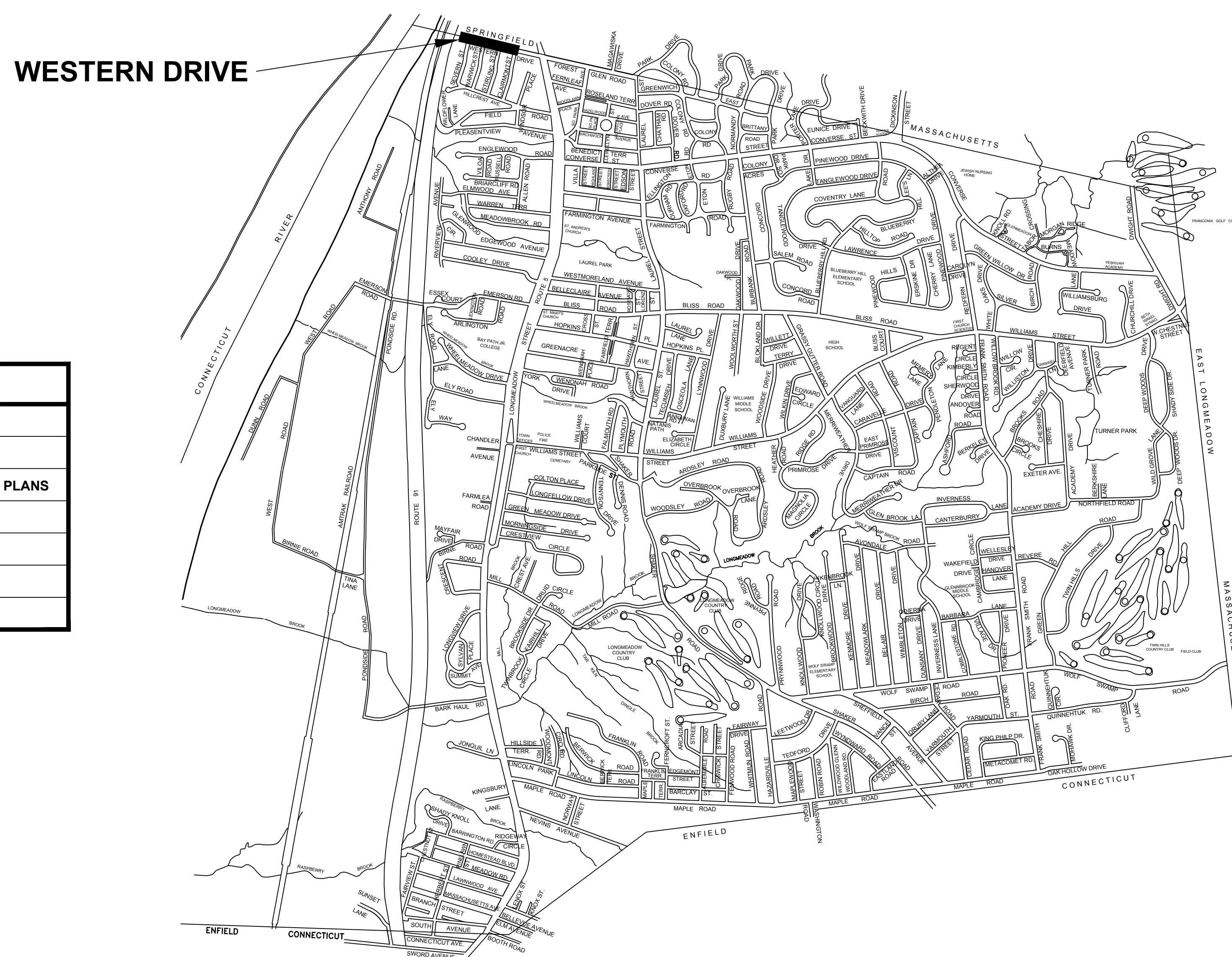


TOWN OF LONGMEADOW, MASSACHUSETTS

Plan of

2019 WESTERN DRIVE

SEWER MAIN IMPROVEMENT PROJECT



WESTERN DRIVE

INDEX

SHEET NUMBER	DESCRIPTION
1	COVER SHEET
2	GENERAL NOTES
3	WESTERN DRIVE SEWER MAIN CONSTRUCTION PLANS
4	MISCELLANEOUS SEWER DETAILS

SELECT BOARD

MARIE ANGELIDES
 RICHARD FOSTER
 MARK P. GOLD
 THOMAS LACHIUSA
 MARC STRANGE

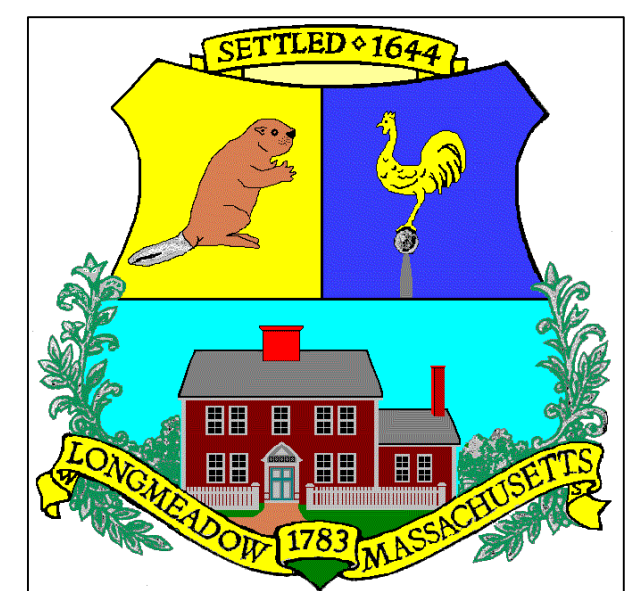
INTERIM TOWN MANAGER

JAMES MOYNIHAN

DEPARTMENT OF PUBLIC WORKS

MARIO MAZZA, DIRECTOR
 ANDREW KRAR, P.E., TOWN ENGINEER
 PETER THURBER, DIRECTOR
 WATER & WASTEWATER OPERATIONS

LONGMEADOW
 ENGINEERING
 DEPARTMENT



LOCUS MAP

Not To Scale

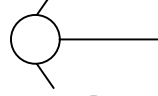





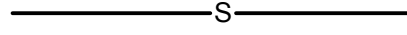
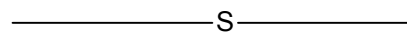
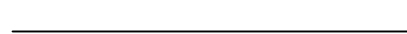


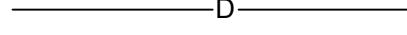
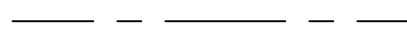
GENERAL NOTES

- EXISTING UTILITY LOCATIONS ARE BASED ON AVAILABLE INFORMATION. THE CONTRACTOR SHALL DETERMINE THE EXACT LOCATION OF UTILITIES BY TEST PIT OR OTHER METHOD WHERE REQUIRED. SECTIONS OF PROPOSED SEWER MAY NEED TO BE ADJUSTED BASED ON LOCATION AND DEPTH OF EXISTING UTILITIES.
- THE CONTRACTOR SHALL REMOVE AND REPLACE FENCES, MAILBOXES, CURBING, ETC. AS NECESSARY, AND WITH THE ENGINEER'S APPROVAL. CONDITION OF REPLACED ITEMS SHALL BE EQUAL OR BETTER THAN ORIGINAL CONDITION PRIOR TO REMOVAL.
- THE CONTRACTOR SHALL TAKE NECESSARY PRECAUTIONS TO MAINTAIN EXISTING WATER, SEWER, AND GAS SERVICES TO RESIDENTS ALONG THE PROJECT ROUTE. DAMAGED SERVICES SHALL BE REPAIRED IMMEDIATELY AT NO ADDITIONAL COST TO THE OWNER.
- STORM AND SANITARY BY-PASS PUMPING, IF REQUIRED, SHALL BE PROVIDED BY THE CONTRACTOR, AND INCLUDED IN APPROPRIATE BID ITEMS.
- ALL TEST PIT WORK MUST BE COMPLETED PRIOR TO COMMENCING SEWER CONSTRUCTION WORK BY THE CONTRACTOR. THE ENGINEER SHALL USE TEST PIT INFORMATION FOR DIRECTING THE CONTRACTOR, IN THE EVENT OF A PROPOSED CONFLICT WITH THE ACTUAL EXISTING UTILITY LOCATIONS AND/OR ELEVATIONS.
- ADJUSTMENTS TO THE PROPOSED SEWER LAYOUT AND ELEVATIONS SHALL NOT BE CONSIDERED AS CAUSE FOR ADDITIONAL PAYMENTS. THE CONTRACTOR SHALL NOT MAKE PROPOSED SEWER LAYOUT AND ELEVATION ADJUSTMENTS WITHOUT THE WRITTEN APPROVAL FROM THE ENGINEER.
- DIVERSION AND CONTROL OF SANITARY AND STORM FLOWS IN THE EXISTING SEWER AND DRAINS ARE THE RESPONSIBILITY OF THE CONTRACTOR. THE CONTRACTOR'S INTENDED METHODS FOR DIVERSION AND CONTROL DEWATERING SHALL BE SUBMITTED TO THE TOWN ENGINEER FOR REVIEW.
- ASBESTOS CEMENT PIPE TO BE REMOVED AS A RESULT OF THIS PROJECT SHALL BE HANDLED, TRANSPORTED AND DISPOSED OF IN ACCORDANCE WITH APPLICABLE ASBESTOS ABATEMENT PROCEDURES.
- PROVIDE TEMPORARY WATER & SEWER SERVICES AS NEEDED TO MAINTAIN WATER & SEWER SERVICE TO HOMES IN WORK AREA DURING CONSTRUCTION.
- PLANIMETRIC AND TOPOGRAPHIC FEATURES SHOWN ON THESE PLANS ARE BASED ON AVAILABLE MAPPING, MASSGIS, GOOGLE EARTH, UTILITY CONNECTION CARDS, LAND SURVEY, AND FIELD MEASUREMENTS, AND IS NOT INTENDED TO BE ACCURATE.
- THE PROPERTY AND STREET LINES DEPICTED HAVE BEEN COMPILED FROM VARIOUS SOURCES AND ARE NOT TO BE CONSTRUED AS BEING OBTAINED AS A RESULT OF A FIELD SURVEY, NOR DO THEY REPRESENT A PROPERTY/BOUNDARY OPINION.
- ELEVATIONS ARE BASED ON THE BENCHMARK SHOWN ON THE PLANS AND THE VERTICAL DATUM IS ASSUMED.
- THE CONTRACTOR SHALL DETERMINE FOR HIMSELF, PRIOR TO BIDDING, THE LOCATION AND ELEVATIONS OF ALL UTILITIES THAT MAY AFFECT HIS CONSTRUCTION OPERATIONS. THE CONTRACTOR SHALL ADEQUATELY SUPPORT AND PROTECT ALL UTILITIES AND BE RESPONSIBLE FOR ALL DAMAGE. CALL DIGSAFE AT LEAST 72 HOURS PRIOR TO STARTING CONSTRUCTION.
- CONTRACTOR SHALL COORDINATE ACTIVITIES WITH INDIVIDUAL UTILITY COMPANIES.
- THE CONTRACTOR SHALL NOTIFY THE ENGINEER SHOULD THERE BE ANY POTENTIAL CONFLICTS BETWEEN EXISTING UTILITIES AND PROPOSED CONSTRUCTION PRIOR TO CONSTRUCTION.
- ALL DIMENSIONS, ELEVATIONS AND EXISTING CONDITIONS SHALL BE FIELD VERIFIED BY THE CONTRACTOR PRIOR TO CONSTRUCTION ANY DISCREPANCIES SHALL BE REPORTED TO THE ENGINEER.
- CONTRACTOR IS RESPONSIBLE TO ENSURE THAT PROPER STORM DRAINAGE AND SANITARY SEWER FLOW IS MAINTAINED THROUGHOUT CONSTRUCTION.
- WITHIN THE PROJECT LIMITS, ALL AREAS AND FACILITIES DISTURBED DURING PROJECT CONSTRUCTION, INCLUDING, BUT NOT LIMITED TO, ALL SHRUBS, TREES, MAIL BOXES, LIGHT POLES, FENCES, WALLS, PAINTED STEEL HANDRAIL PIPE, ALL SIGNS WHICH WERE REMOVED, OR ANY AND ALL OTHER PROPERTY REMOVED OR HARMED IN ANY WAY BY WORK DONE UNDER THIS CONTRACT, SHALL BE RESTORED TO A CONDITION EQUAL TO OR BETTER THAN ORIGINAL.
- ON PUBLIC OR PRIVATE PROPERTIES, BEYOND THE PROJECT LIMITS, ITEMS SUCH AS MAIL BOXES, LIGHT POLES, SIDEWALKS, SHRUBS, FENCES, SIGNS, ETC. DAMAGED OR DISTURBED BY THE CONTRACTOR SHALL BE REPAIRED OR REPLACED AT THE CONTRACTOR'S EXPENSE, AS DIRECTED BY THE ENGINEER.
- THE CONTRACTOR SHALL REPLACE ALL BOUNDS (STREET LINE MONUMENTS AND PROPERTY MARKERS) DISTURBED AS A RESULT OF HIS OPERATIONS AND AT HIS OWN EXPENSE. SAID BOUNDS SHALL AGAIN BE ESTABLISHED BY A LAND SURVEYOR LICENSED IN THE STATE OF MASSACHUSETTS.
- ALL EROSION CONTROL MEASURES SHALL BE IN PLACE PRIOR TO COMMENCING ANY CONSTRUCTION AND SHALL BE MAINTAINED IN PROPER WORKING ORDER UNTIL ALL DISTURBED AREAS ARE STABILIZED AND GROUND COVER IS ESTABLISHED.
- WATER GATE VALVES, HYDRANTS, MANHOLES, AND CATCHBASINS WITHIN THE PROJECT LIMITS THAT NEED TO BE RESET DUE TO THE PROPOSED CONSTRUCTION SHALL BE RESET BY THE CONTRACTOR TO BE FLUSH WITH THE PROPOSED GRADE. GAS GATE VALVES, UTILITY MANHOLES AND UTILITY POLES SHALL BE RESET BY THE OWNER OF THAT UTILITY.
- ANY DAMAGES TO STORM DRAIN LINES SHOWN ON PLANS WILL BE REPAIRED BY THE CONTRACTOR AT THE CONTRACTORS EXPENSE

ABBREVIATIONS

ASBESTOS CEMENT	AC	REINFORCED CONCRETE PIPE	RCP
BITUMINOUS CONCRETE	BIT CONC	RIGHT OF WAY	R.O.W.
BOTTOM OF EXPLORATION	BOE	ROCK PILE	RP
CAST IRON	CI	SANITARY MANHOLE	SMH
CATCH BASIN	CB	STANDARD DIMENSION RATIO	SDR
CHAIN LINK FENCE	C/L FEN	STATION	STA
CHIMNEY	CHIM	STONE BOUND	SB
CEMENT LINED STEEL	CL	STREET LINE	SL
CLEANOUT	CO	SHUT OFF CURB STOP	SO
CONCRETE	CONC	TEMPORARY BENCH MARK	TBM
CONCRETE WALK	C	TELEPHONE POLE	TP
COPPER	CU	TRAFFIC CONTROL	TC
CORRUGATED METAL PIPE	CMP	UNDER CONSTRUCTION	UC
CUT SPIKE	CS	UTILITY POLE	U.P.
DEBRIS	DB	UTILITY STRUCTURE	UT
DIRT PILE	DP	UNDELINEATED WETLAND AREA	UWA
DRAIN MANHOLE	DMH	VITRIFIED CLAY PIPE	VC
DUCTILE IRON	DI	WATER GATE	WG
EASEMENT LINE ELEVATION	EL	WATER SERVICE	WS
EDGE OF PAVEMENT	EOP	WATER TIGHT COVER	WTC
EROSION CONTROL	EC		
GAS GATE	GG		
GATE VALVE	GV		
GEOGRAPHICAL INFORMATION SYSTEMS	GIS		
GRANITE CURB	GR CURB		
GUY WIRE	GY		
GUY POLE	GP		
HOUSE	HSE		
HYDRANT	HYD		
INVERT	INV		
IRON PIPE	IP		
MAIL BOX	MB		
MANHOLE	MH		
MECHANICAL JOINT	MJ		
NOT IN THIS CONTRACT	NITC		
NOT TO SCALE	NTS		
PAVED WALK	PW		
POLYETHYLENE PIPE	PE		
POLY-VINYL CHLORIDE	PVC		
PROPERTY LINE	PL		
PUMP STATION	P.S.		

LEGEND

FIRE HYDRANT	
SANITARY MANHOLE	
PROPOSED SANITARY MANHOLE	
DRAINAGE STRUCTURE	
WATER VALVE	
UTILITY POLE	
EXISTING SEWER LINE	
EXISTING SEWER LINE	
EXISTING SEWER SERVICE	
EXISTING WATER LINE	
EXISTING DRAIN LINE	
EXISTING GAS LINE	
OVERHEAD WIRES	

ENGINEERING DEPARTMENT
LONGMEADOW, MASSACHUSETTS

GENERAL NOTES WESTERN DRIVE SEWER MAIN IMPROVEMENTS

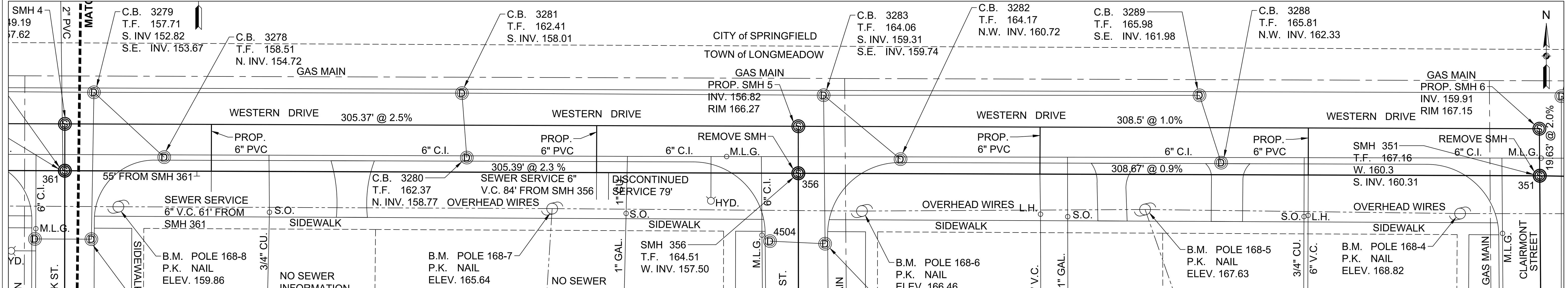
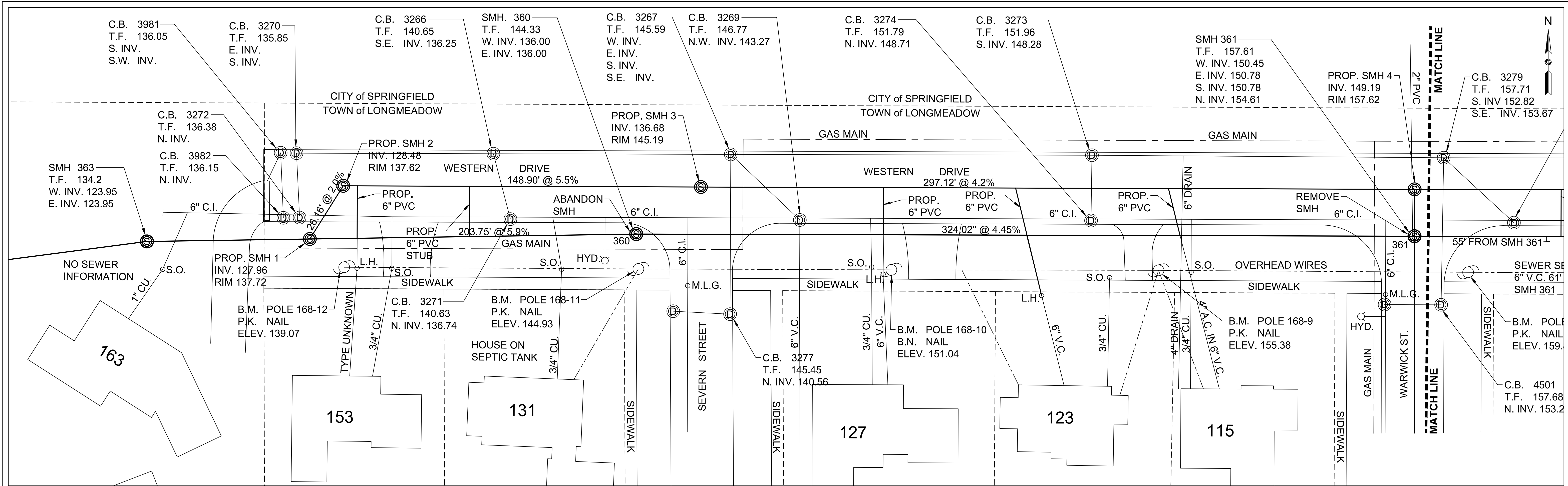
SCALE: N.T.S.

DATE: 2019

2019 Western Drive Construction Drawing.dwg

SHEET 2 of 4

DRAWN BY: C.M. CHECKED BY: A.K.



NOTE:
 EXISTING CONDITIONS SHOWN HEREON WERE TAKEN FROM AVAILABLE MAPS, AERIAL PHOTOGRAPHY, FIELD MEASUREMENTS, AND OTHER SOURCES THAT MAY NOT BE ACCURATE, AND WAS PREPARED FOR ILLUSTRATIVE PURPOSES ONLY. PRIOR TO CONSTRUCTION, CONTRACTOR SHALL COORDINATE WITH TOWN ENGINEERING STAFF TO VERIFY LOCATIONS OF THE PROPOSED WORK.

NOTE:
 ANY DAMAGES TO STORM DRAIN LINES SHOWN ON PLANS WILL BE REPAIRED BY THE CONTRACTOR AT THE CONTRACTORS EXPENSE

ENGINEERING DEPARTMENT
 LONGMEADOW, MASSACHUSETTS

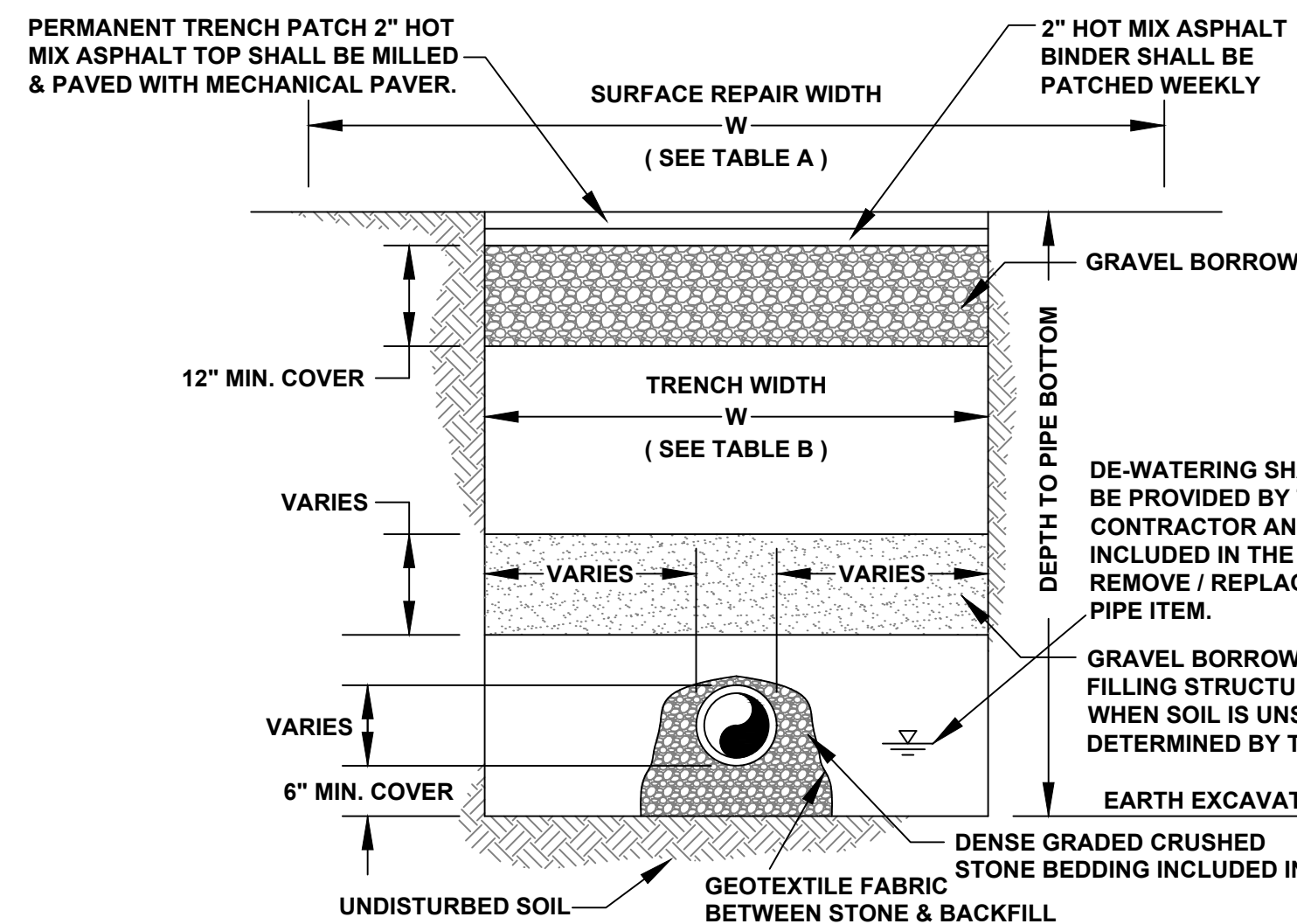
**CONSTRUCTION PLAN WESTERN
 DRIVE SEWER MAIN IMPROVEMENTS**

SCALE: DATE: 2019

2019 Western Drive Construction Drawing.dwg

SHEET 3 of 4

DRAWN BY: C.M. CHECKED BY: A.K.



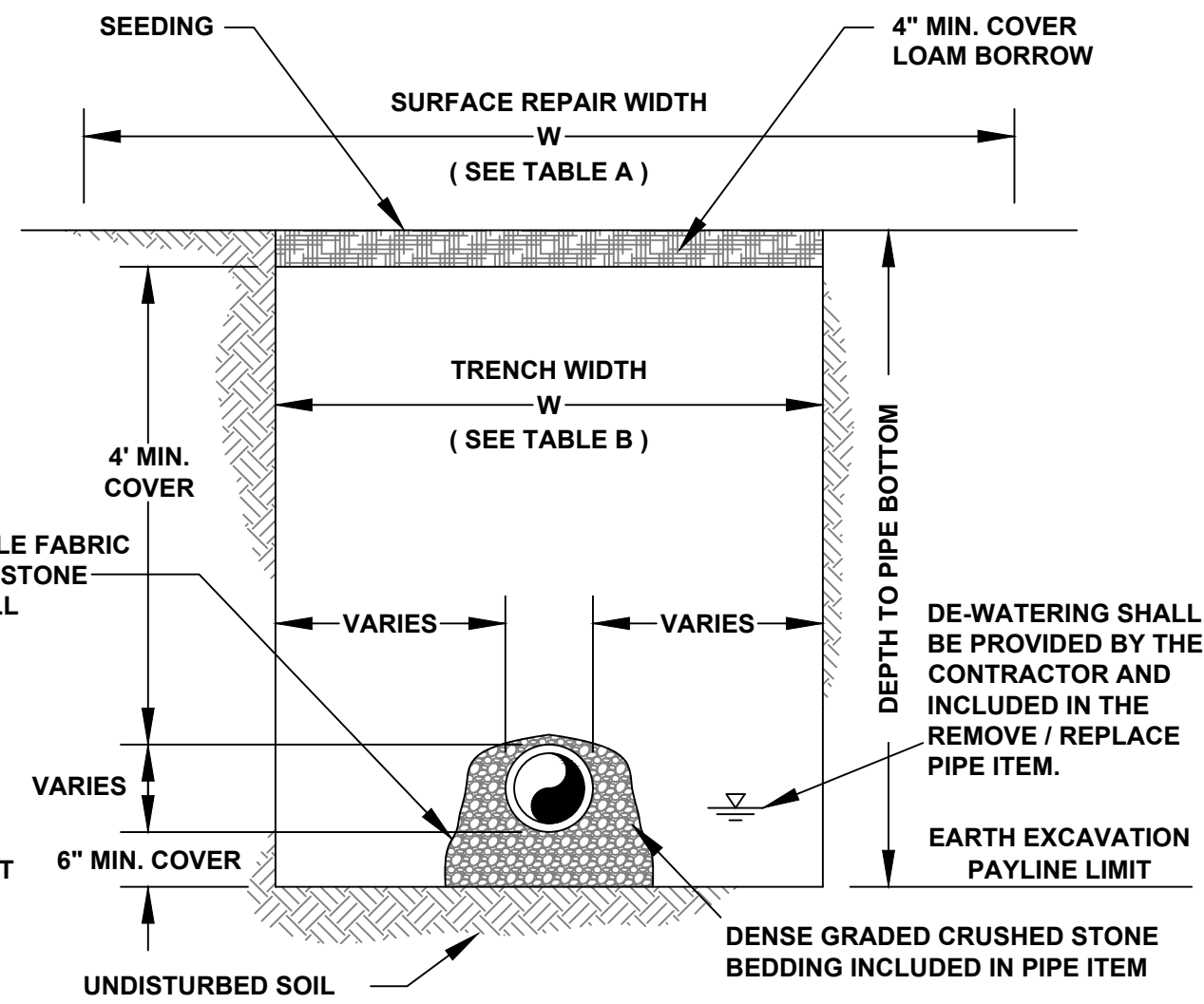
SEWER TRENCH SECTION IN ROAD WAY
NOT TO SCALE

TABLE A-MAXIMUM SURFACE REPAIR PAY WIDTHS (SEE NOTE 3)
7'-0" MAX.
TABLE B-MAXIMUM TRENCH REPAIR PAY WIDTHS (SEE NOTE 3)
TEMP 6'-0"

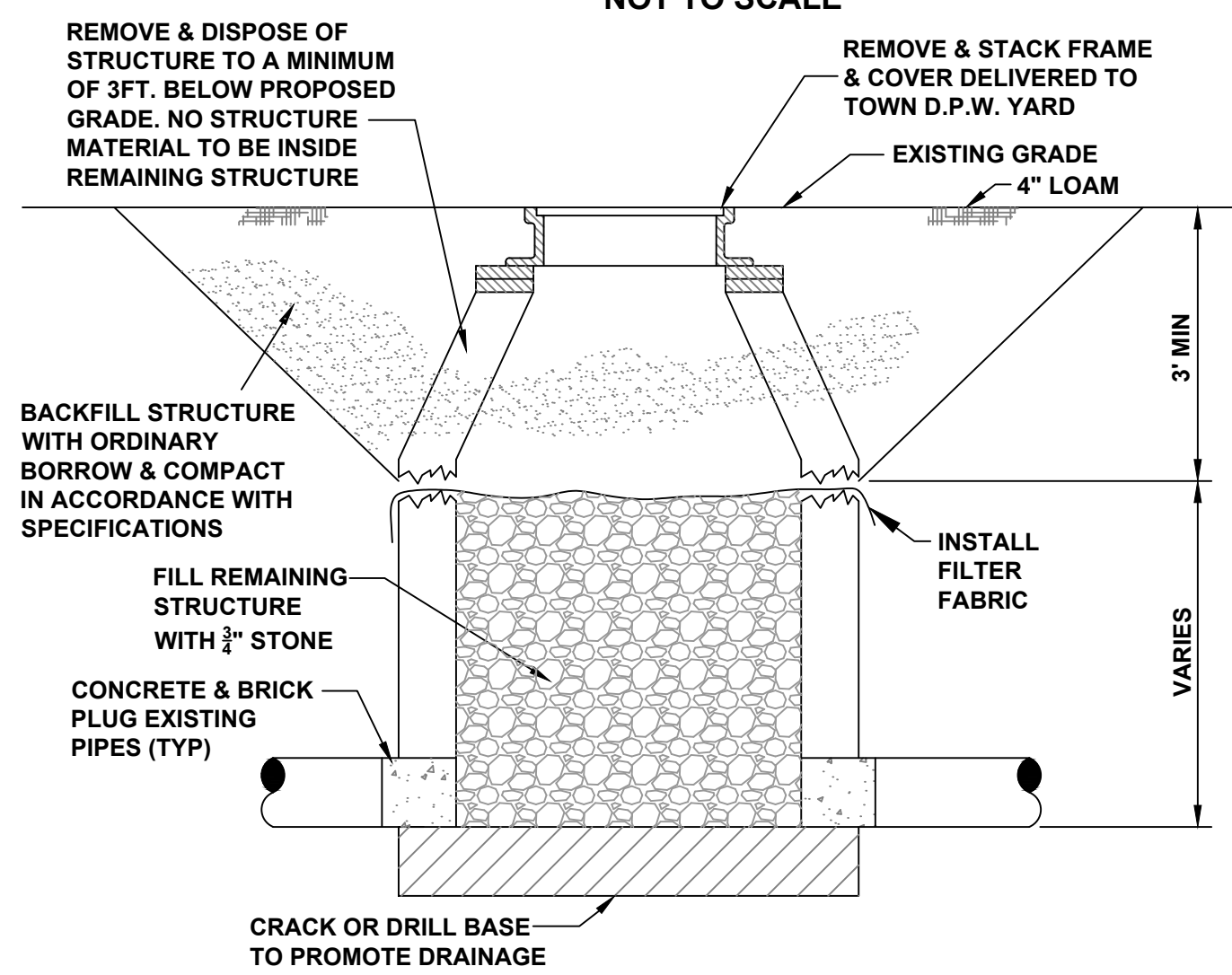
NOTES:

1. INCLUDES TEMPORARY PAVEMENT PATCHES FOR SIDEWALKS AND DRIVEWAYS.
2. INCLUDES PERMANENT REPAIRS FOR DRIVEWAYS, SIDEWALKS, LAWN AREAS (LOAM & SEED), BERM, AND CURBS.
3. THE PAYLINE DIMENSIONS SHOWN REPRESENT THE MAXIMUM PAYLINE LIMITS TO BE PAID. WHEN THE ACTUAL SURFACE REPAIR OR TRENCH WIDTH IS LESS, THE ACTUAL WIDTH SHALL BE PAID FOR AT THE APPLICABLE UNIT PRICE.

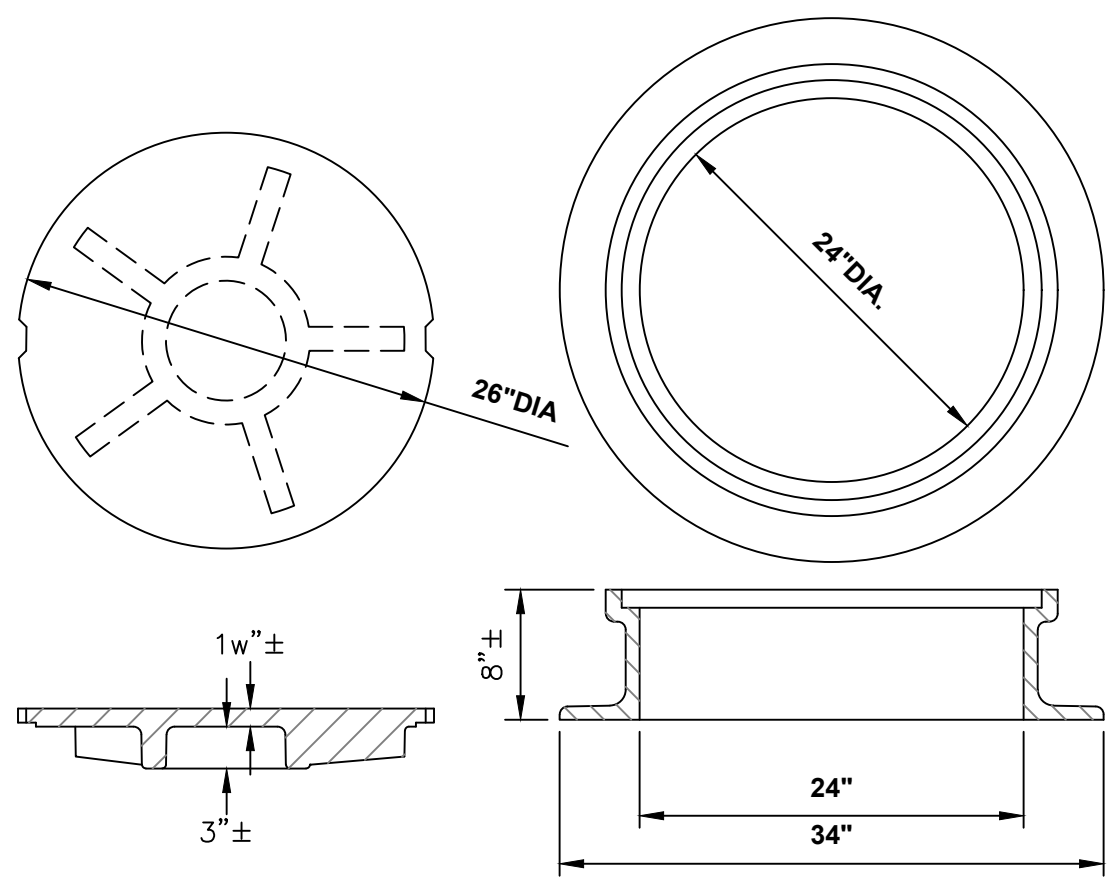
TRENCH EXCAVATION AND SURFACE REPAIR PAYLINES



SEWER TRENCH SECTION IN TREE BELT
NOT TO SCALE



SANITARY MANHOLE ABANDONMENT
NOT TO SCALE

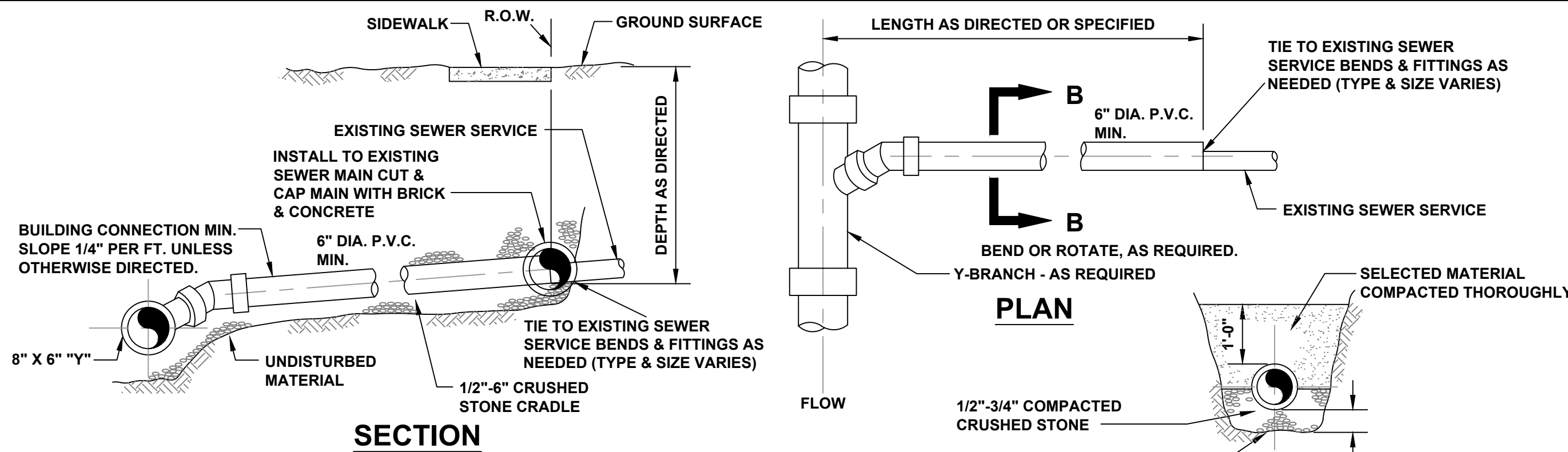


STANDARD MANHOLE COVER
MINIMUM WEIGHT: 200 LBS.

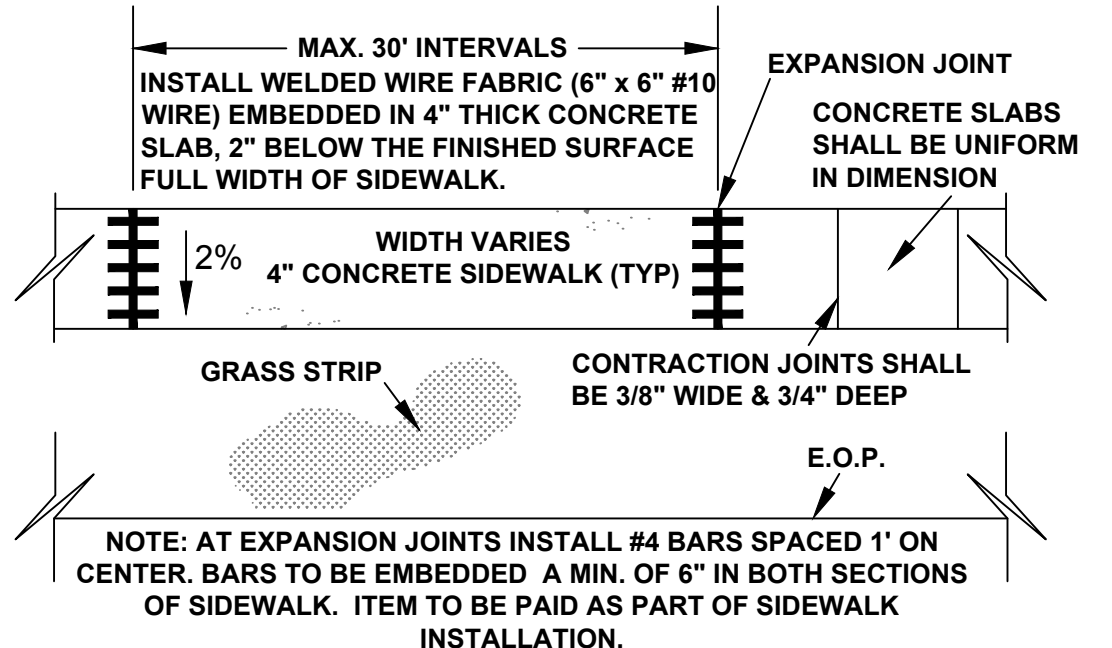
STANDARD MANHOLE FRAME
MINIMUM WEIGHT: 240 LBS.

- NOTES:**
1. FRAME AND COVER SHALL BE PROVIDED FROM THE SAME MANUFACTURER.
 2. LETTERING SHALL BE CAST INTO COVERS AS SPECIFIED.

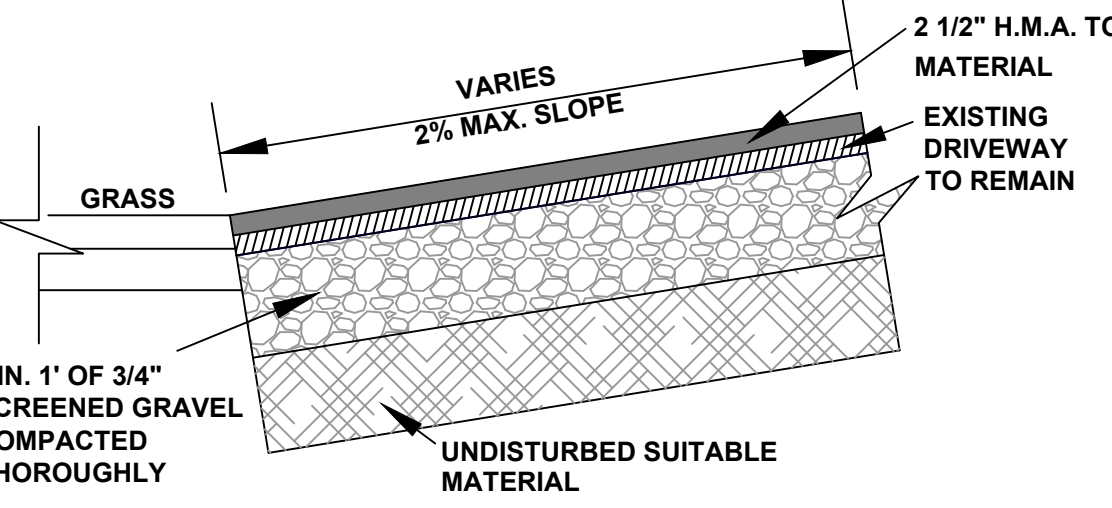
MANHOLE FRAME & COVER
NOT TO SCALE



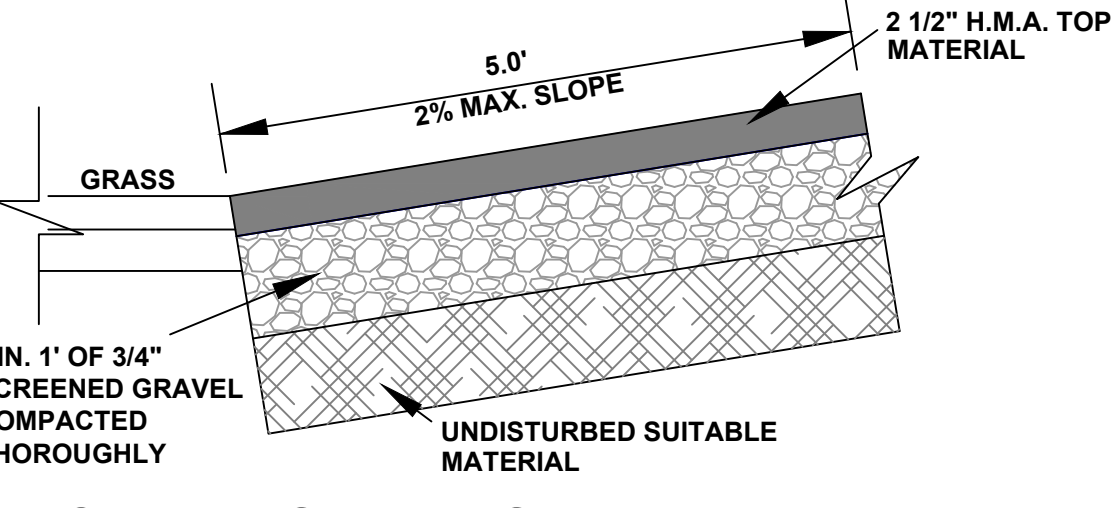
TYPICAL BUILDING CONNECTION
NOT TO SCALE



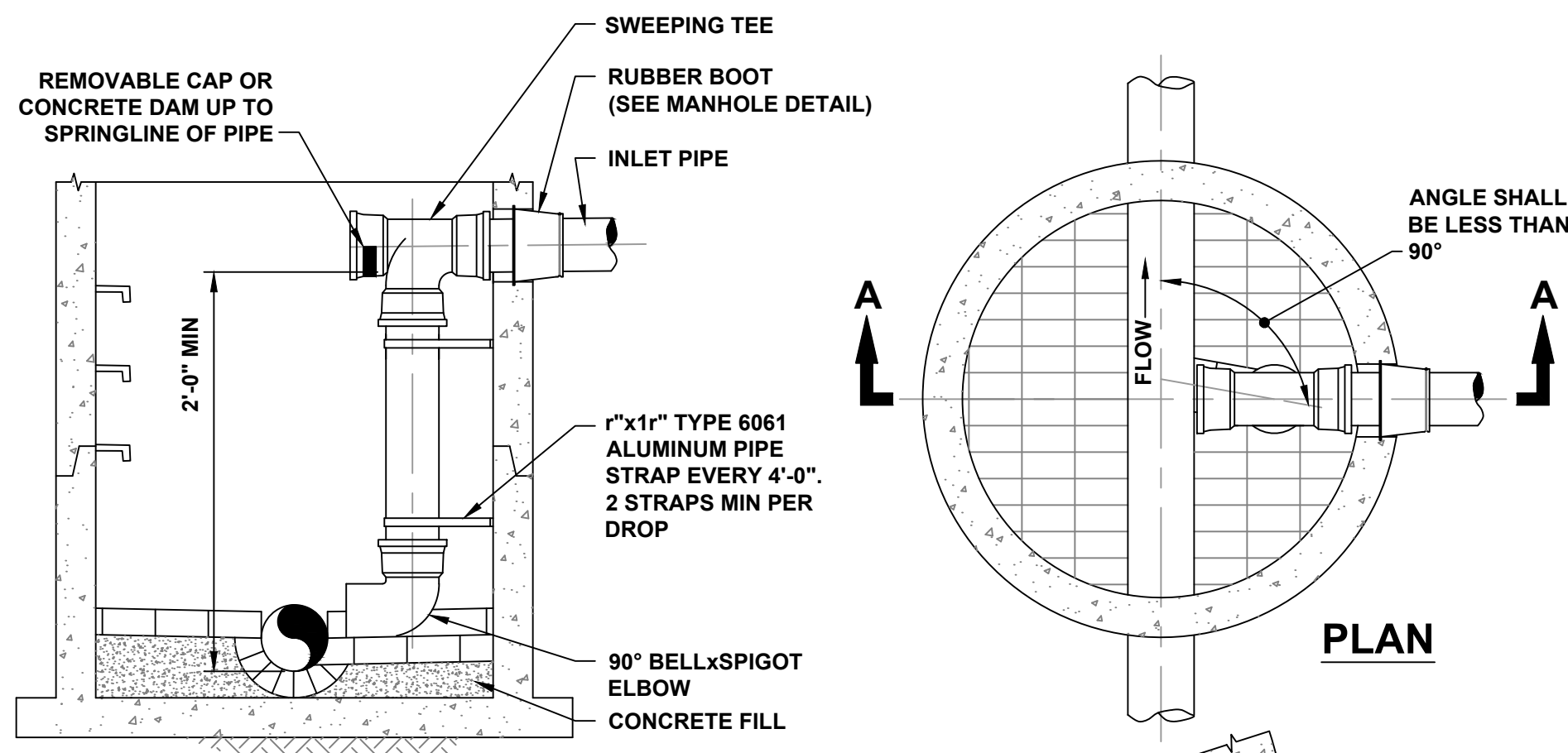
CONCRETE SIDEWALK DETAIL PLAN VIEW
(SCALE: N.T.S.)



HOT MIX ASPHALT DRIVEWAY DETAIL
NOT TO SCALE



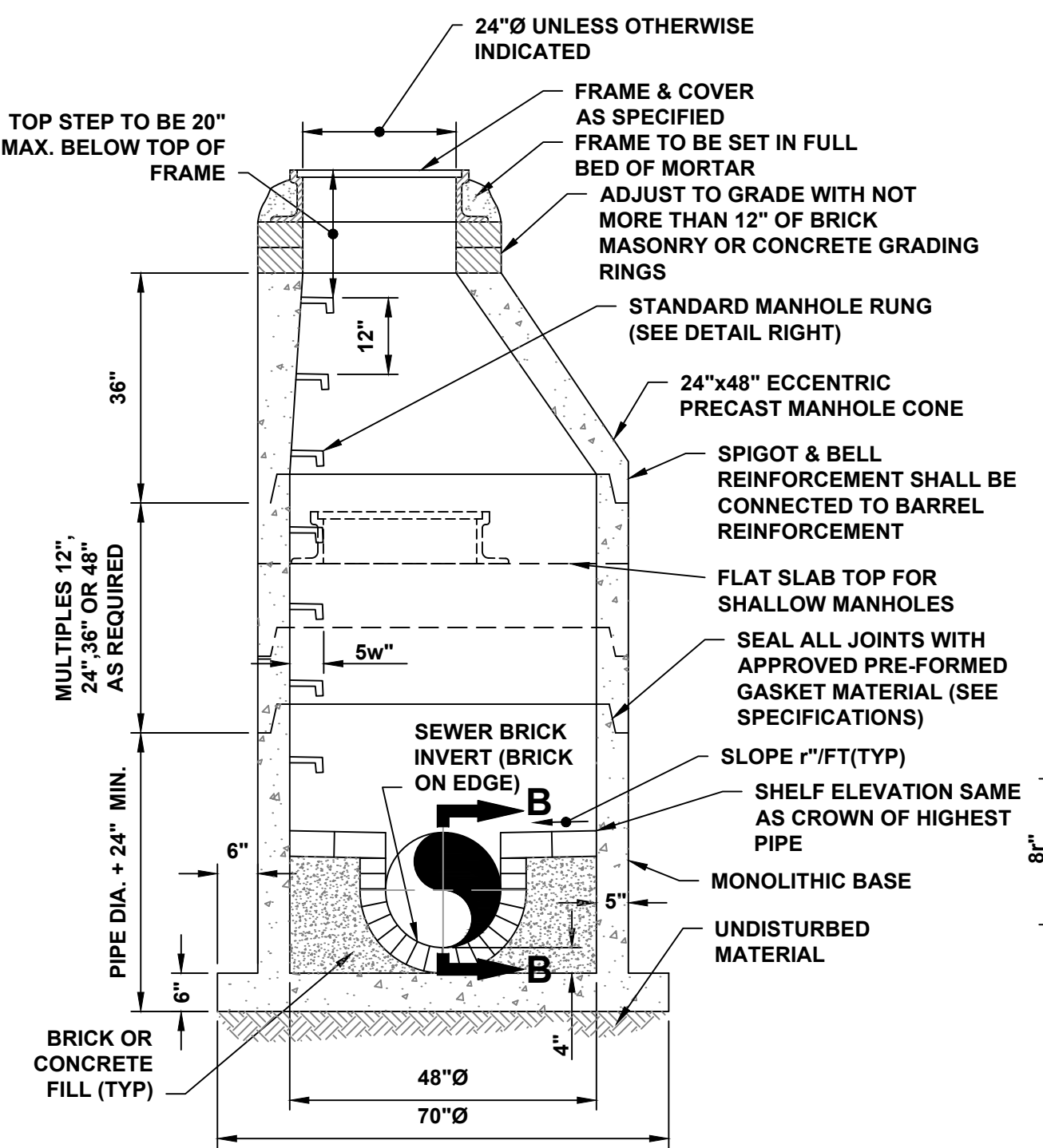
HOT MIX ASPHALT SIDEWALK DETAIL
NOT TO SCALE



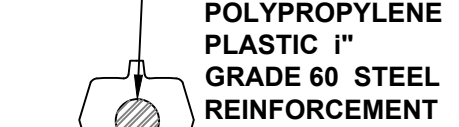
PIPE STRAP DETAIL

- NOTES:**
1. RISER PIPE AND FITTINGS SHALL BE THE SAME DIAMETER AS THE INLET PIPE AND SHALL BE CONSTRUCTED OF SDR35 PVC PIPE.
 2. INTERIOR MANHOLE CHIMNEYS SHALL ONLY BE INSTALLED IN 60" DIAMETER OR LARGER MANHOLE. SEE MANHOLE DETAIL FOR FURTHER INFORMATION.
 3. INTERIOR CHIMNEY TO BE USED FOR PIPES LESS THAN 12" IN DIAMETER.

INTERIOR MANHOLE CHIMNEY
NOT TO SCALE

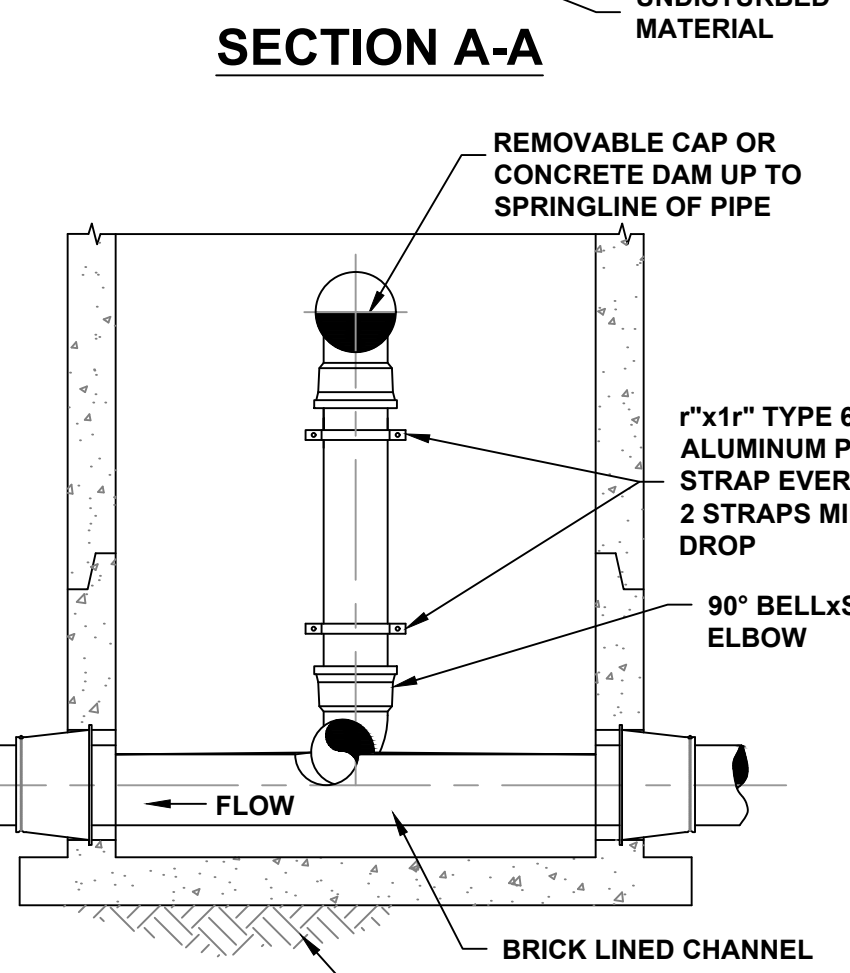


48" PRECAST SANITARY SEWER MANHOLE
NOT TO SCALE

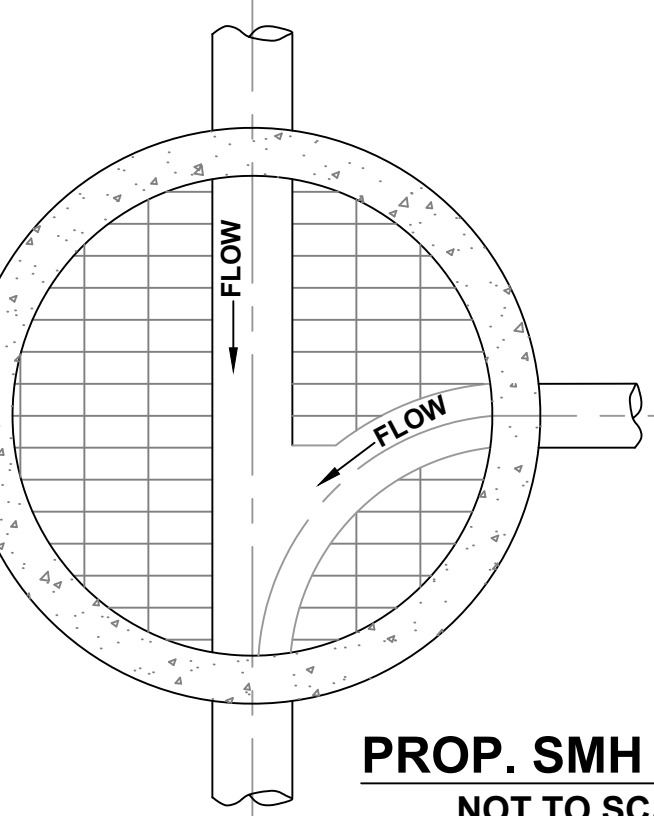


STANDARD MANHOLE RUNG

STANDARD MANHOLE RUNG
NOT TO SCALE



INTERIOR MANHOLE CHIMNEY
NOT TO SCALE



PROP. SMH INVERT
NOT TO SCALE

ENGINEERING DEPARTMENT
LONGMEADOW, MASSACHUSETTS

MISCELLANEOUS SEWER DETAILS

SCALE: 1" = 20'
2019 Western Drive Construction Drawing.dwg

DATE: 2019

DRAWN BY: C.M. CHECKED BY: A.K.

SHEET 4 of 4