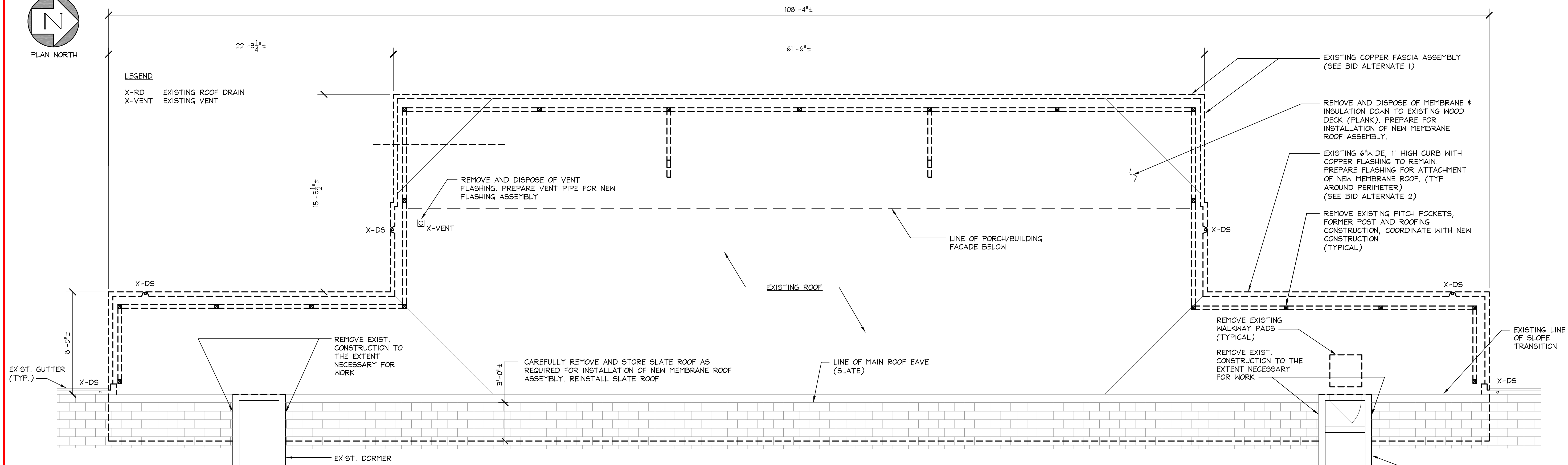




PLAN NORTH

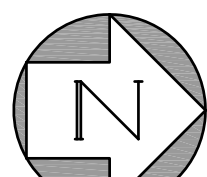


NOTES:

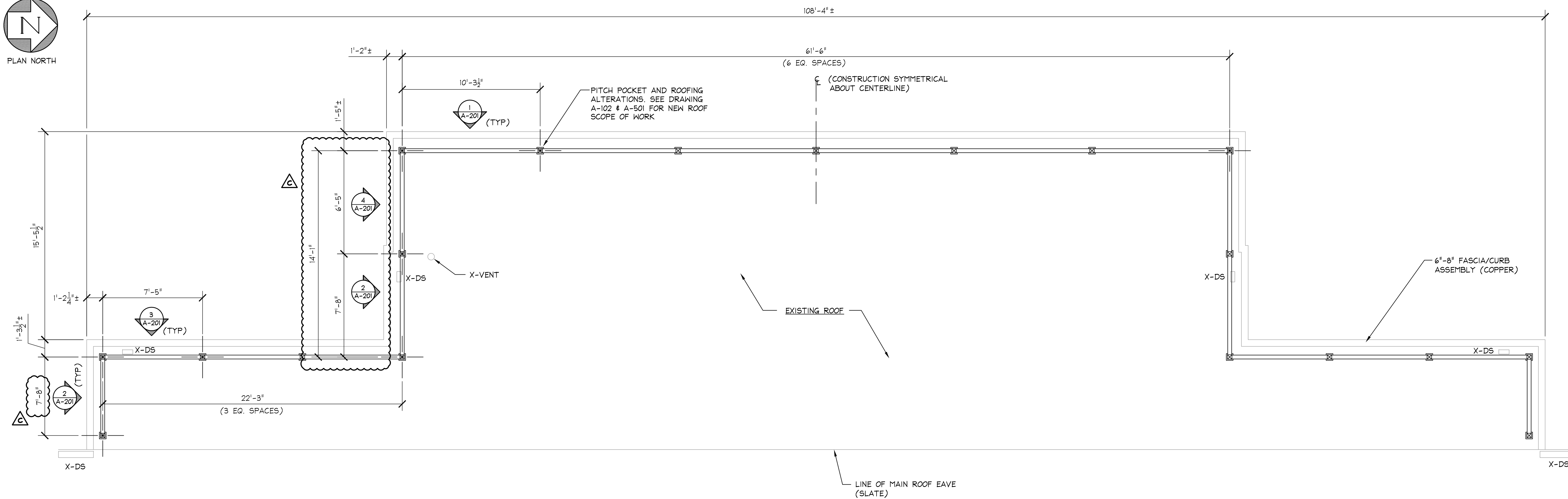
- EXISTING FASCIA ARE TO BE REMOVED AND REPLACED WITH NEW ONLY IF BID ALTERNATE 1 IS ACCEPTED.
- EXISTING GUTTERS AND DOWNSPOUTS ARE TO BE REMOVED AND REPLACED WITH NEW ONLY IF BID ALTERNATE 2 IS ACCEPTED.

1 PARTIAL DEMOLITION PLAN AT ROOF

A-101 1/4"=1'-0" 0 2' 4' 8'

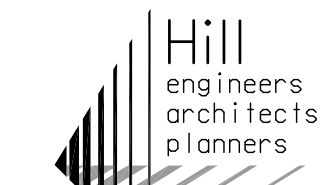


PLAN NORTH



2 ROOF BALUSTRADE PLAN

A-101 1/4"=1'-0" 0 2' 4' 8'



50 Depot Street
Dalton, MA 01226
(413) 684-0925

41 Park Street
Adams, MA 01220
(413) 743-0013

www.hillengineers.com

PRELIMINARY

NOT TO BE
USED FOR
CONSTRUCTION

REV	DESCRIPTION	DRN	CHK'D	DATE
A	ISSUED FOR CLIENT REVIEW	DB	JR	02/22/19
B	ISSUED FOR BIDDING	DB	JR	03/15/19
C	ISSUED WITH ADDENDUM No. 2	DB	JR	04/09/19

A COPY OF THE DATA IN THIS DRAWING FILE IS MAINTAINED AT THE OFFICES OF HILL ENGINEERS ARCHITECTS PLANNERS AND REVISION OF THIS DATA IS THE SOLE RESPONSIBILITY OF THE USER.

TOWN OF LONGMEADOW
COMMUNITY HOUSE

756 LONGMEADOW STREET
PROJECT DESCRIPTION

LONGMEADOW, MA
DRAWING TITLE

ROOF DEMOLITION AND
NEW BALUSTRADE PLANS

ROOF AND BALUSTRADE
REPLACEMENT

DRAWN BY	DB
DATE DRAWN	10/16/18
SCALE	AS NOTED
APV'D BY	

CAD CODE:
TOL-7-011-A-101.dwg

GRAPHIC SCALE:

PROJECT NUMBER:
TOL-7-011

DRAWING NUMBER	REV.
A-101	C