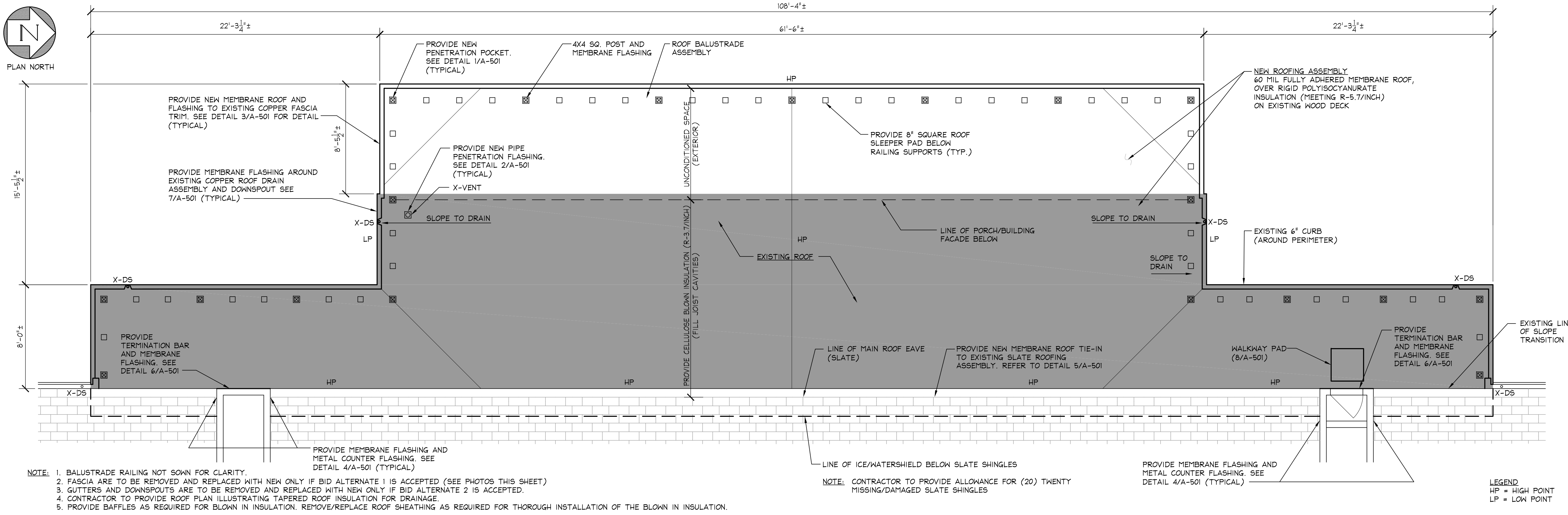


PLAN NORTH



- NOTE:**
- BALUSTRADE RAILING NOT SHOWN FOR CLARITY.
 - FASCIA ARE TO BE REMOVED AND REPLACED WITH NEW ONLY IF BID ALTERNATE 1 IS ACCEPTED (SEE PHOTOS THIS SHEET)
 - GUTTERS AND DOWNSPOUTS ARE TO BE REMOVED AND REPLACED WITH NEW ONLY IF BID ALTERNATE 2 IS ACCEPTED.
 - CONTRACTOR TO PROVIDE ROOF PLAN ILLUSTRATING TAPERED ROOF INSULATION FOR DRAINAGE.
 - PROVIDE BAFFLES AS REQUIRED FOR BLOWN IN INSULATION. REMOVE/REPLACE ROOF SHEATHING AS REQUIRED FOR THOROUGH INSTALLATION OF THE BLOWN IN INSULATION.

NOTE: CONTRACTOR TO PROVIDE ALLOWANCE FOR (20) TWENTY MISSING/DAMAGED SLATE SHINGLES

LEGEND
HP = HIGH POINT
LP = LOW POINT

| | |
|-------|-----------------------|
| 1 | ROOF PLAN |
| A-102 | 1/4"=1'-0" 0 2' 4' 8' |



PHOTO 1



PHOTO 2



PHOTO 3



PHOTO 4



PHOTO 5

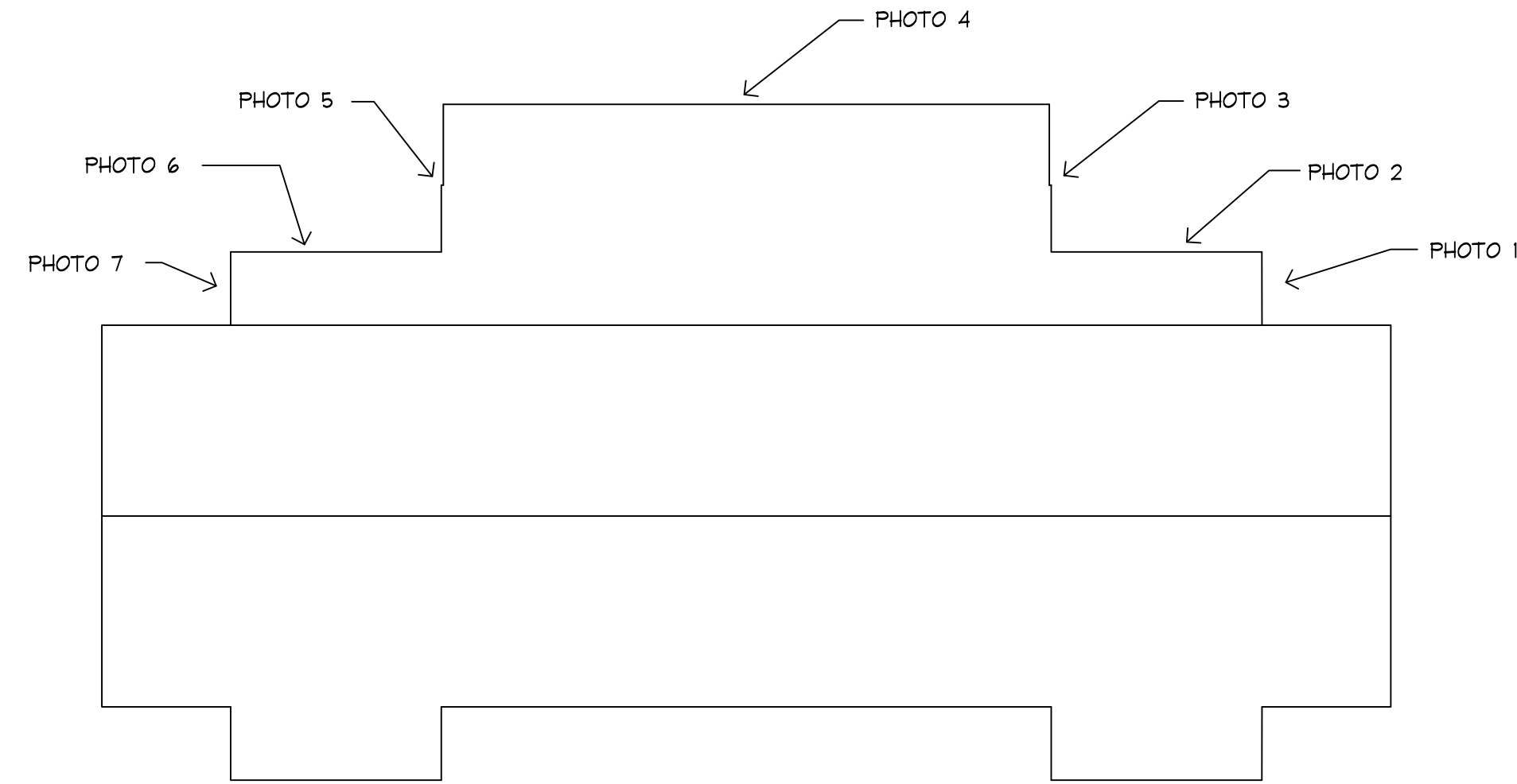
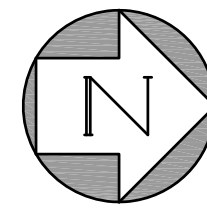


PHOTO 6



PHOTO 7

WEST ELEVATION FASCIA REPLACEMENT REFERENCE PHOTOS (BID ALTERNATE 1)



KEY PHOTO PLAN
1/16"=1'-0"

Hill
engineers
architects
planners

50 Depot Street
Dalton, MA 01226
(413) 684-0925

41 Park Street
Adams, MA 01220
(413) 743-0013
www.hillengineers.com

PRELIMINARY

NOT TO BE
USED FOR
CONSTRUCTION

| REV. | DESCRIPTION | DRN | CK'D | DATE |
|------|--------------------------|-----|------|----------|
| A | ISSUED FOR CLIENT REVIEW | DB | | 02/22/19 |
| B | ISSUED FOR BIDDING | DB | JR | 03/15/19 |
| | | | | |
| | | | | |
| | | | | |
| | | | | |
| | | | | |
| | | | | |
| | | | | |
| | | | | |

A COPY OF THE DATA IN THIS DRAWING FILE IS MAINTAINED AT THE OFFICES OF HILL ENGINEERS ARCHITECTS PLANNERS AND REVISION OF THIS DATA IS THE SOLE RESPONSIBILITY OF THE USER.

TOWN OF LONGMEADOW
COMMUNITY HOUSE

736 LONGMEADOW STREET
PROJECT DESCRIPTION

LONGMEADOW, MA
DRAWING TITLE

ROOF AND BALUSTRADE REPLACEMENT
ROOF PLAN

| | |
|-----------------|---------------------|
| DRAWN BY | DB |
| DATE DRAWN | 10/16/18 |
| SCALE | AS NOTED |
| APV'D BY | |
| CAD CODE: | TOL-7-011-A-102.dwg |
| GRAPHIC SCALE: | |
| PROJECT NUMBER: | TOL-7-011 |
| DRAWING NUMBER | A-102 |
| REV. | B |