

PRELIMINARY

NOT TO BE
USED FOR
CONSTRUCTION

REV.	DESCRIPTION	DATE
A	ISSUED FOR CLIENT REVIEW	02/22/19
B	ISSUED FOR BIDDING	03/15/19
C	REVISED DETAIL	03/29/19

TOWN OF LONGMEADOW
COMMUNITY HOUSE

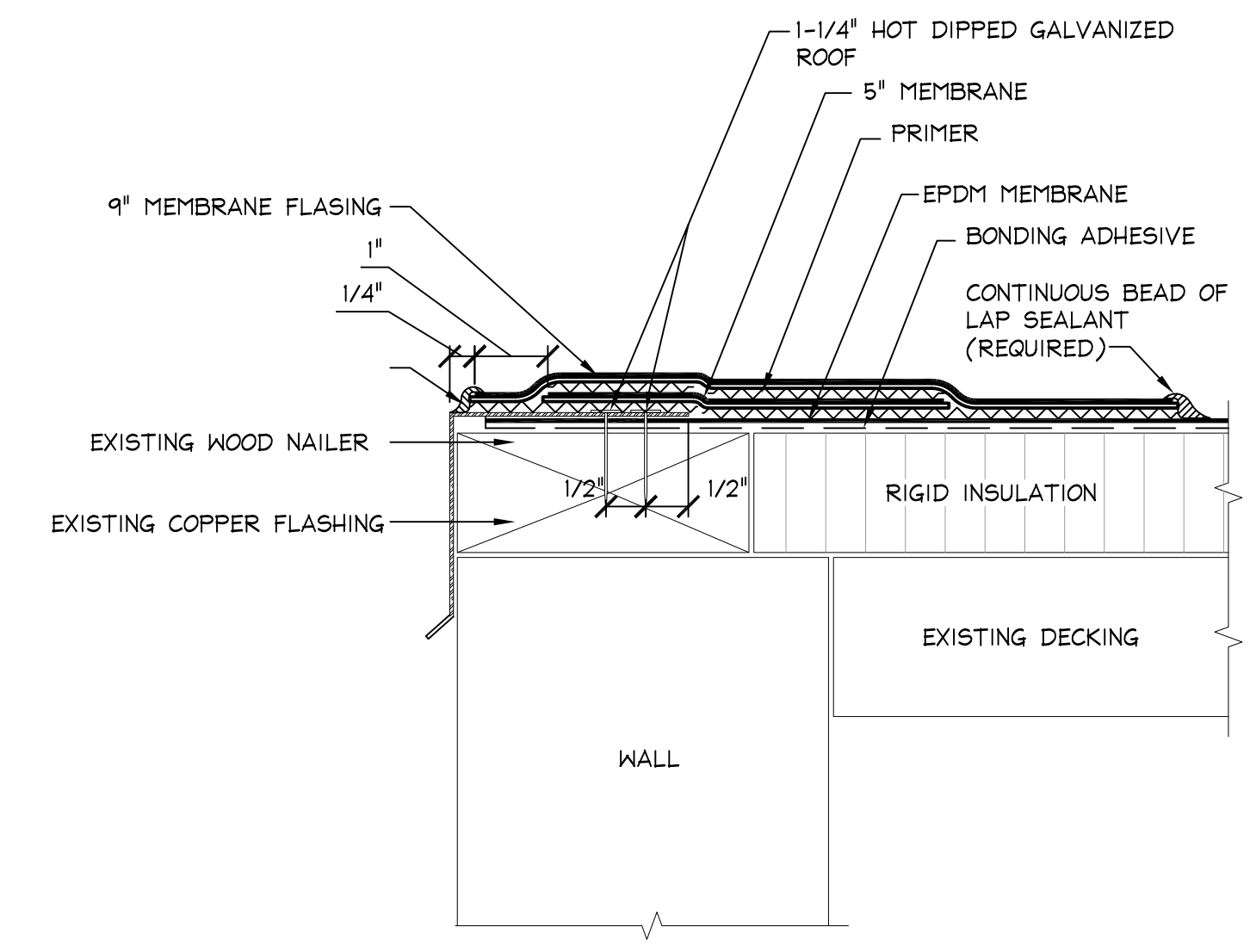
736 LONGMEADOW STREET
PROJECT DESCRIPTION

LONGMEADOW, MA
DRAWING TITLE

ROOFING DETAILS

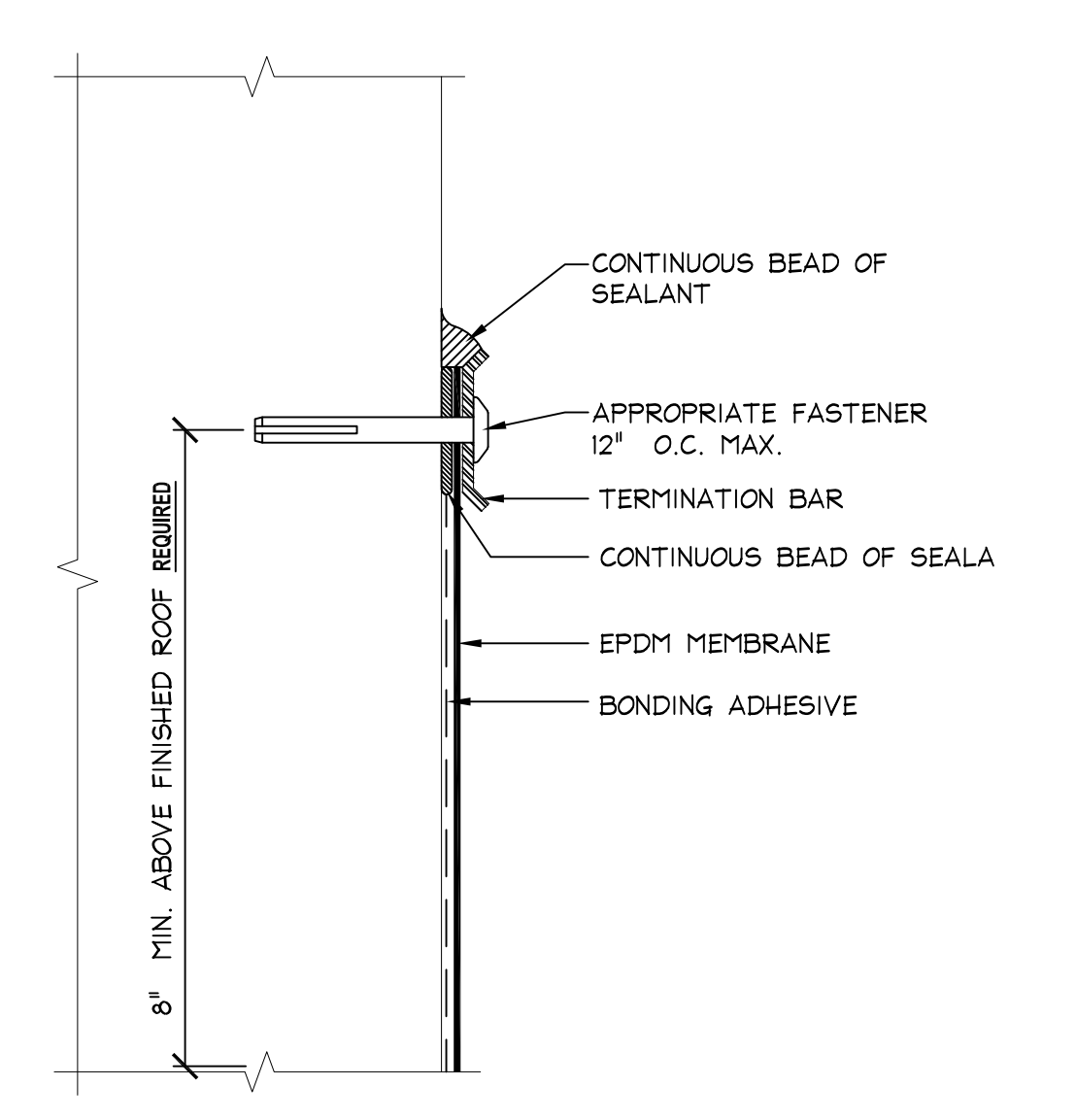
ROOF AND BALLUSTRADE
REPLACEMENT

DRAWN BY	DB
DATE DRAWN	02/05/19
SCALE	AS NOTED
APV'D BY	
CAD CODE:	TOL-7-011-A-501.dwg
GRAPHIC SCALE:	
PROJECT NUMBER:	TOL-7-011
DRAWING NUMBER	A-501
REV.	C



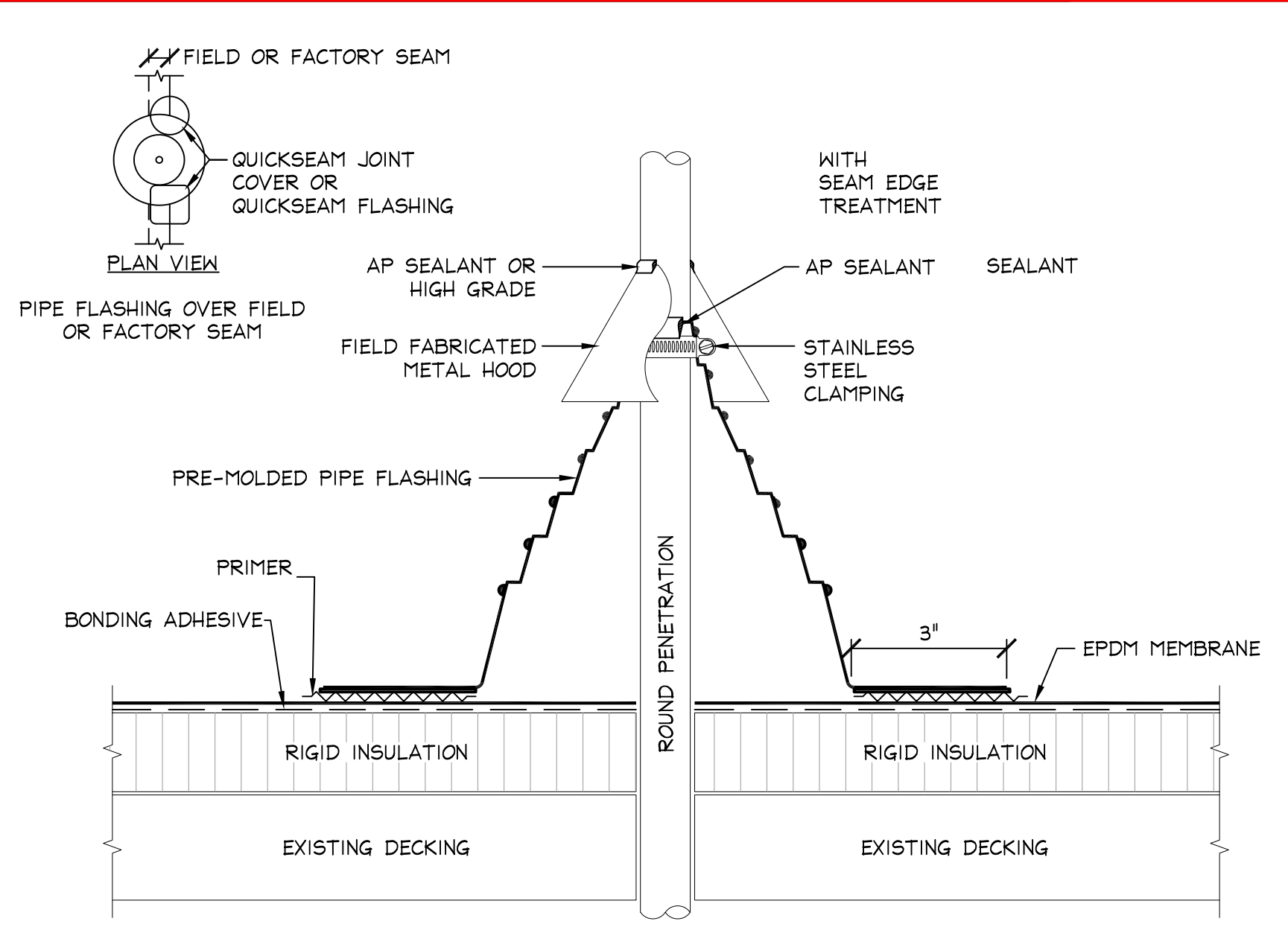
3 ROOF FLASHING DETAIL

A-501 N.T.S.



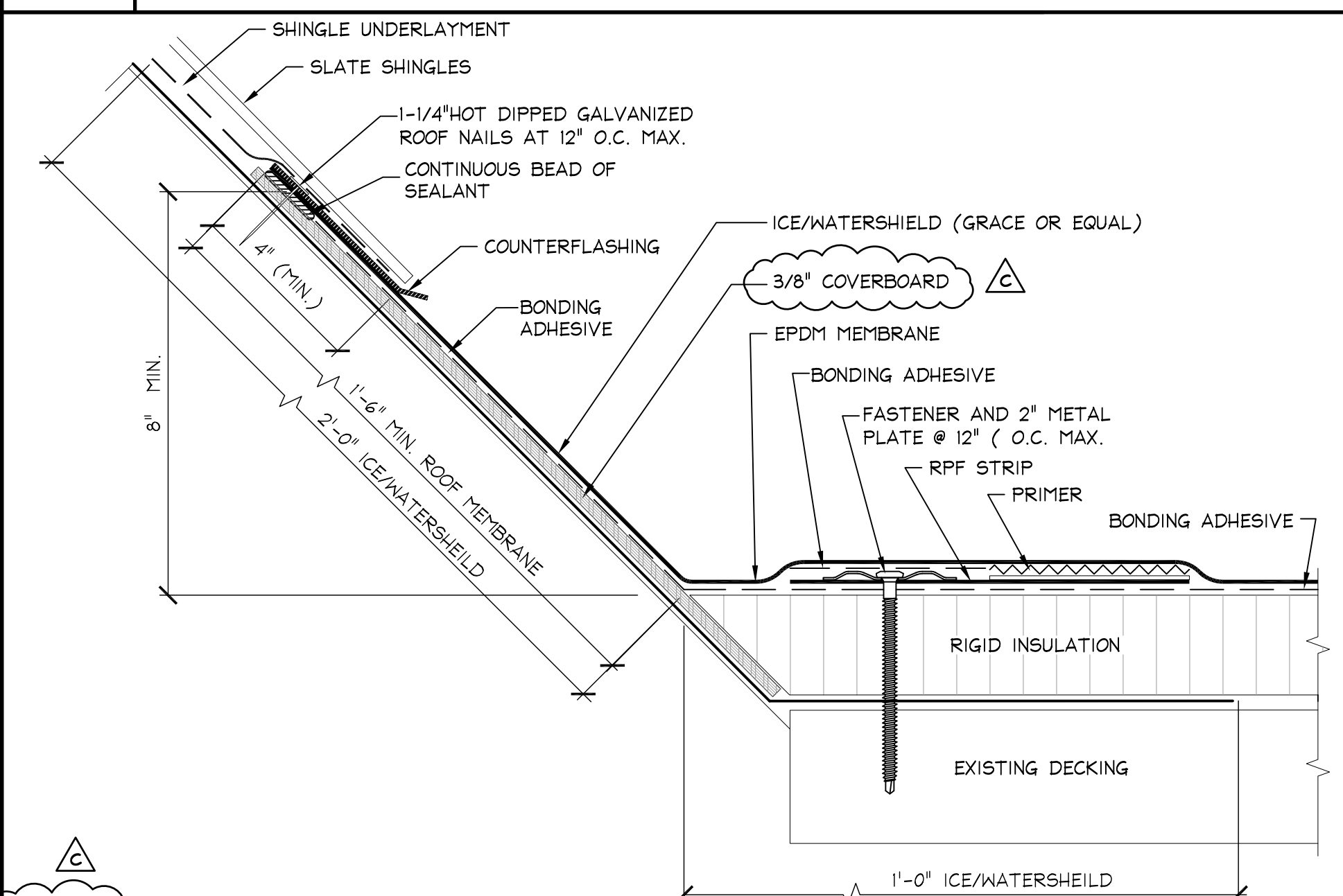
6 WALL TERMINATION DETAIL @ WINDOW AND DOOR SILLS

A-501 N.T.S.



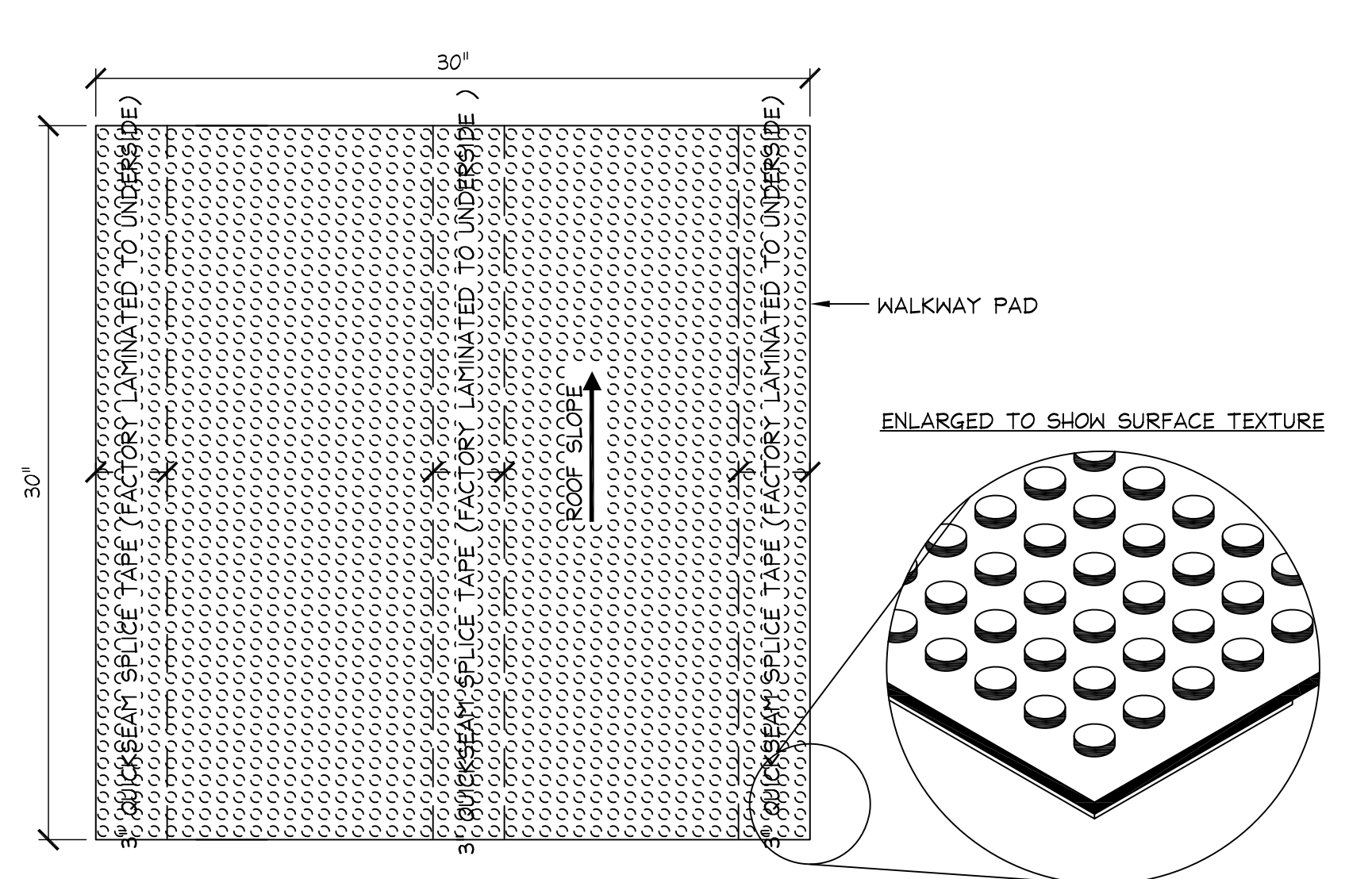
2 PRE-MOLDED PIPE BOOT FLASHING

A-501 N.T.S.



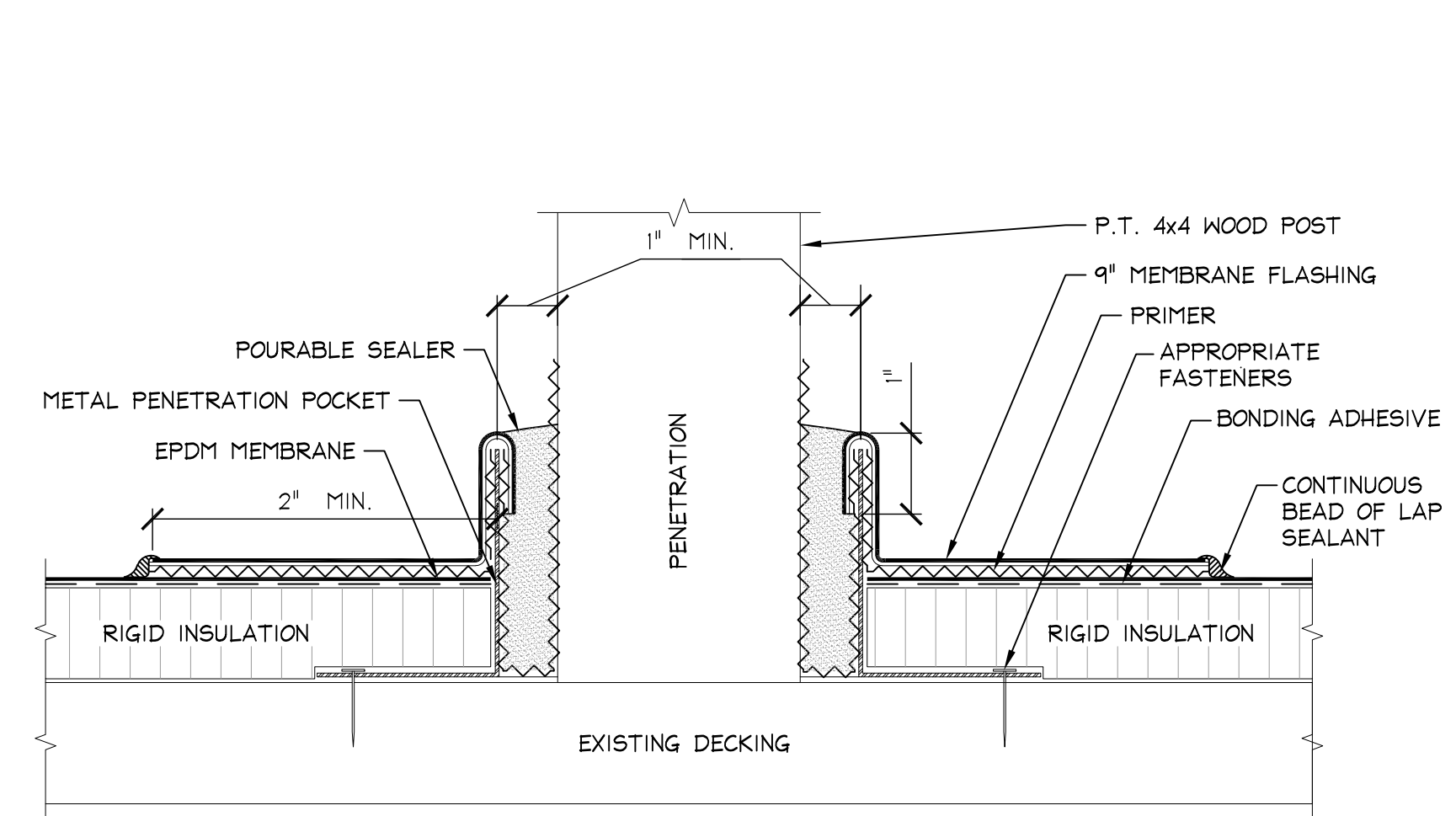
5 ROOF TRANSITION DETAIL (EXISTING SLATE ROOF)

A-501 N.T.S.



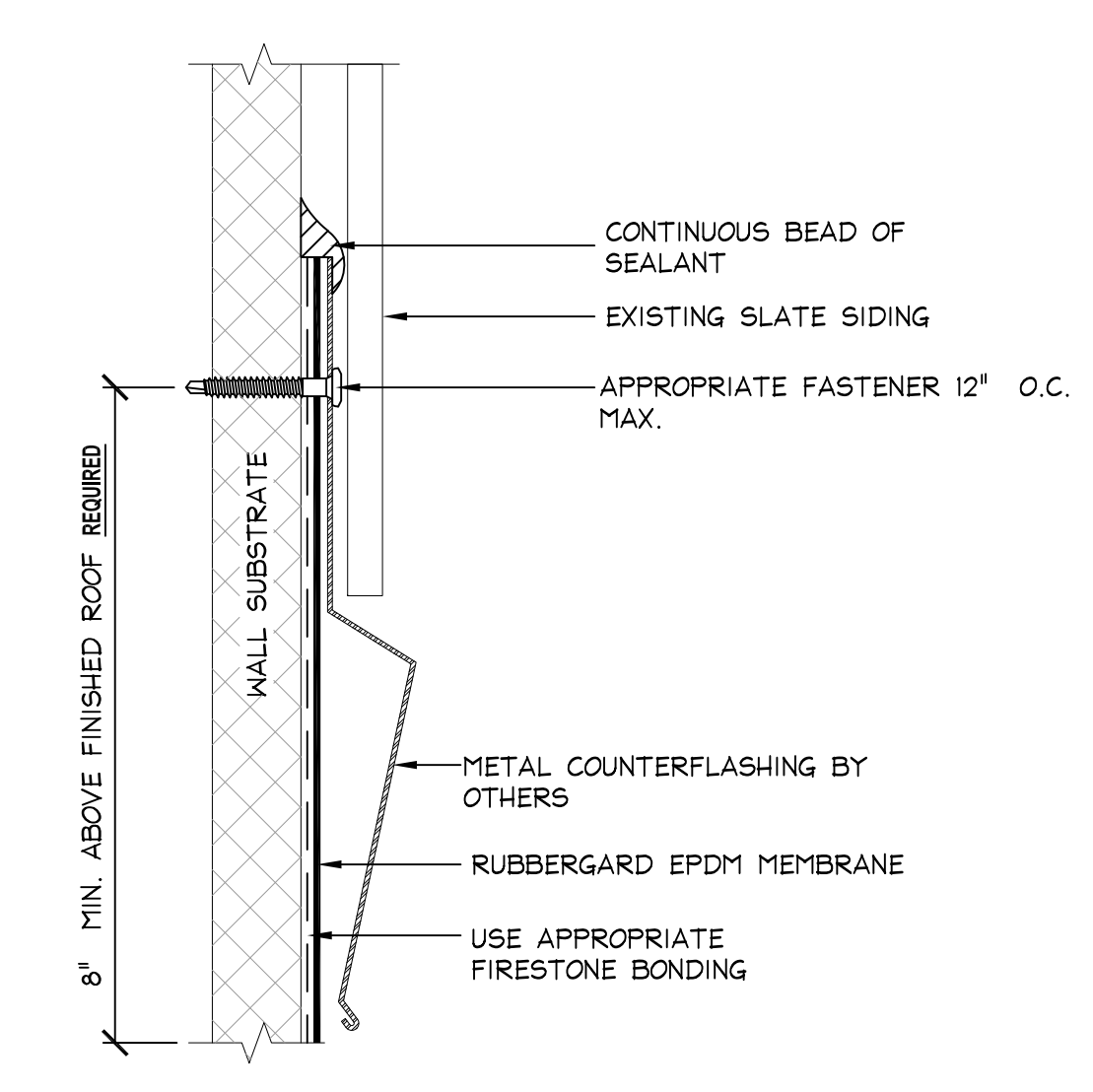
8 TYPICAL WALKWAY PAD DETAIL

A-501 N.T.S.



1 PITCH POCKET DETAIL

A-501 N.T.S.



4 WALL FLASHING DETAIL AT EXISTING SLATE SIDING

A-501 N.T.S.



EXISTING COPPER ROOF DRAIN ASSEMBLY

EXISTING COPPER FASCIA TO REMAIN

7 DRAIN PIPE FLASHING DETAIL

A-501 N.T.S.

NOTE: PROVIDE NEW SLEEVE/ASSEMBLY IF REQUIRED FOR WARRANTY.