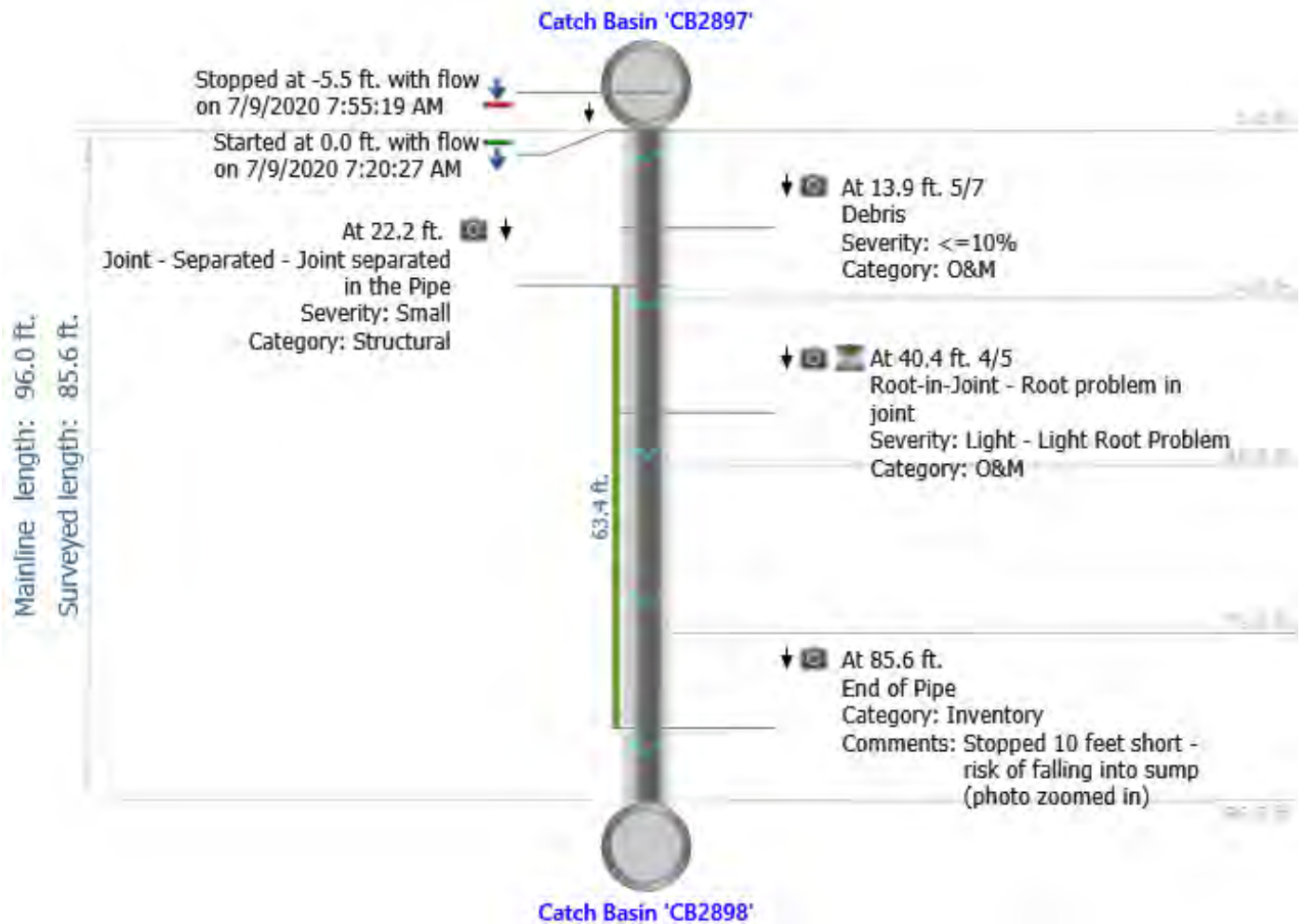




DPC Engineering, LLC
22 Northfield Road
Longmeadow, MA 01106
Phone: 413-567-6310
Email: cctv@dpcengineering.com

LONG-SD-CB2897-CB2898

City: Longmeadow, MA	Project name: Longmeadow, MA	Address: Willow Brook Road	Operator: Gray
Start date/time: 7/9/2020 7:20 AM	Direction: With the flow	Field-measured mainline length: 96.0 ft.	Surveyed length: 85.6 ft.
Upstream node: CB2897	Downstream node: CB2898	Depth US:	Weather: Dry
Pipe type: Storm Drain (SD)	Pipe shape: Circular	Pipe material: Concrete Reinforced	Pipe diameter: 12.0 in.
Comments:			





DPC Engineering, LLC
22 Northfield Road
Longmeadow, MA 01106
Phone: 413-567-6310
Email: cctv@dpcengineering.com

LONG-SD-CB2897-CB2898

City: Longmeadow, MA	Project name: Longmeadow, MA	Address: Willow Brook Road	Operator: Gray
Start date/time: 7/9/2020 7:20 AM	Direction: D	Field-measured mainline length: 96.0 ft.	Surveyed length: 85.6 ft.
Upstream node: CB2897	Downstream node: CB2898	Depth US:	Weather: Dry
Pipe type: Storm Drain (SD)	Pipe shape: Circular	Pipe material: Concrete Reinforced	Pipe diameter: 12.0 in.
Comments:			

Observations

Distance	Dir.	Length	From/To	Code	Modifier/Severity	Rating	Comments
13.9 ft.	D		5 / 7	Debris	<=10%		



22.2 ft.	D	63.4 ft.	/	Joint - Separated	Small		
----------	---	----------	---	-------------------	-------	--	--



Observations

Distance	Dir.	Length	From/To	Code	Modifier/Severity	Rating	Comments
----------	------	--------	---------	------	-------------------	--------	----------

40.4 ft. D 4 / 5 Root-in-Joint Light



85.6 ft. D / End of Pipe

Stopped 10 feet short
- risk of falling into
sump (photo zoomed
in)

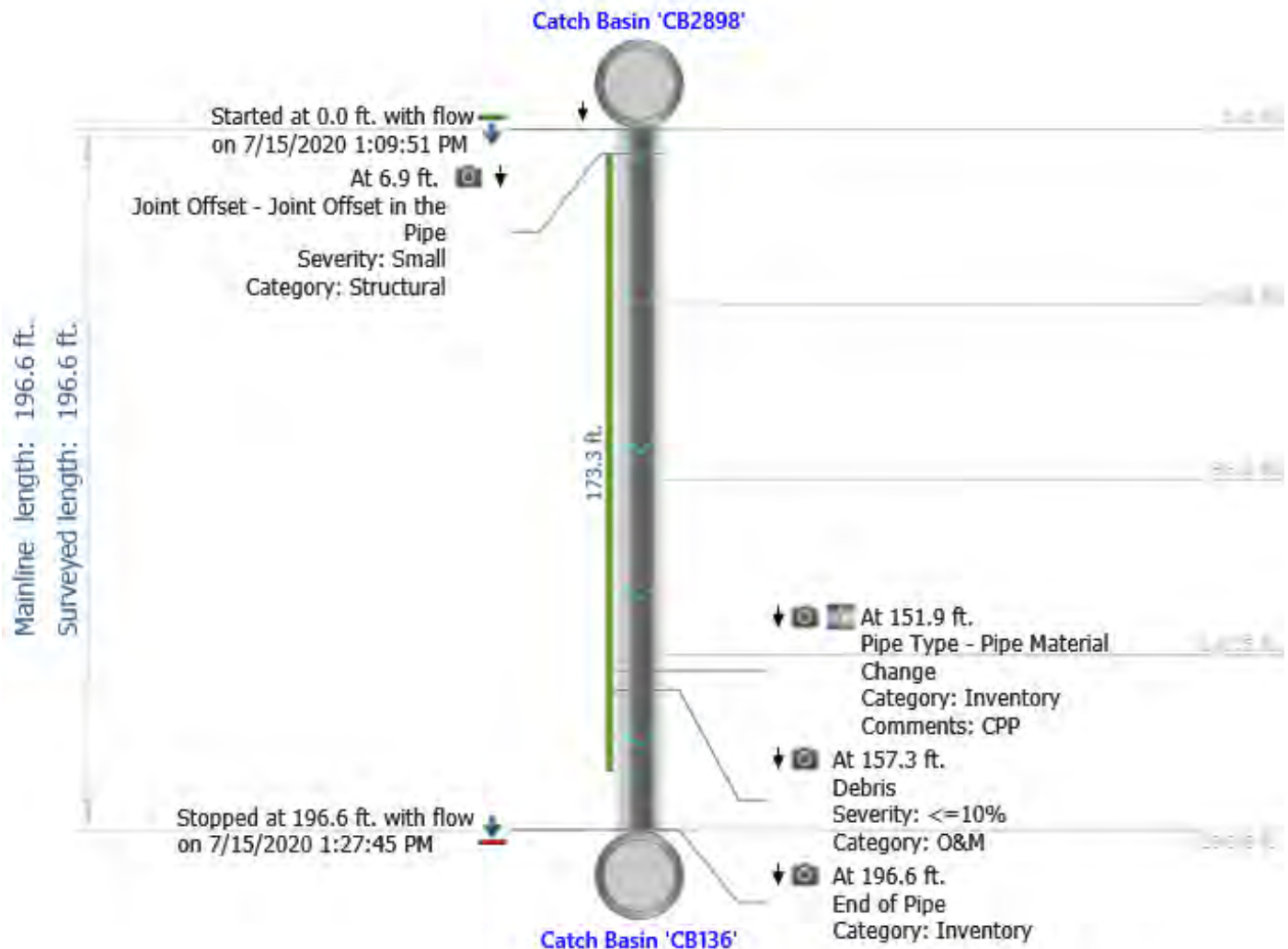




DPC Engineering, LLC
22 Northfield Road
Longmeadow, MA 01106
Phone: 413-567-6310
Email: cctv@dpcengineering.com

LONG-SD-CB2898-CB136

City: Longmeadow, MA	Project name: Longmeadow, MA	Address: Willow Brook Road	Operator: Mike
Start date/time: 7/15/2020 1:09 PM	Direction: With the flow	Field-measured mainline length: 196.6 ft.	Surveyed length: 196.6 ft.
Upstream node: CB2898	Downstream node: CB136	Depth US:	Weather: Dry
Pipe type: Storm Drain (SD)	Pipe shape: Circular	Pipe material: Concrete Reinforced	Pipe diameter: 18.0 in.
Comments:			





DPC Engineering, LLC
22 Northfield Road
Longmeadow, MA 01106
Phone: 413-567-6310
Email: cctv@dpcengineering.com

LONG-SD-CB2898-CB136

City: Longmeadow, MA	Project name: Longmeadow, MA	Address: Willow Brook Road	Operator: Mike
Start date/time: 7/15/2020 1:09 PM	Direction: D	Field-measured mainline length: 196.6 ft.	Surveyed length: 196.6 ft.
Upstream node: CB2898	Downstream node: CB136	Depth US:	Weather: Dry
Pipe type: Storm Drain (SD)	Pipe shape: Circular	Pipe material: Concrete Reinforced	Pipe diameter: 18.0 in.
Comments:			

Observations

Distance	Dir.	Length	From/To	Code	Modifier/Severity	Rating	Comments
6.9 ft.	D	173.3 ft.	/	Joint Offset	Small		



151.9 ft.	D	/	Pipe Type	CPP
-----------	---	---	-----------	-----

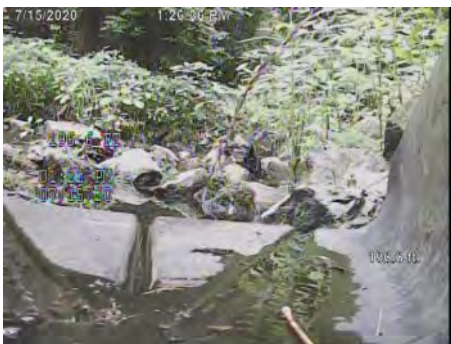


Observations

Distance	Dir.	Length	From/To	Code	Modifier/Severity	Rating	Comments
157.3 ft.	D		/	Debris	<=10%		



196.6 ft.	D		/	End of Pipe			
-----------	---	--	---	-------------	--	--	--

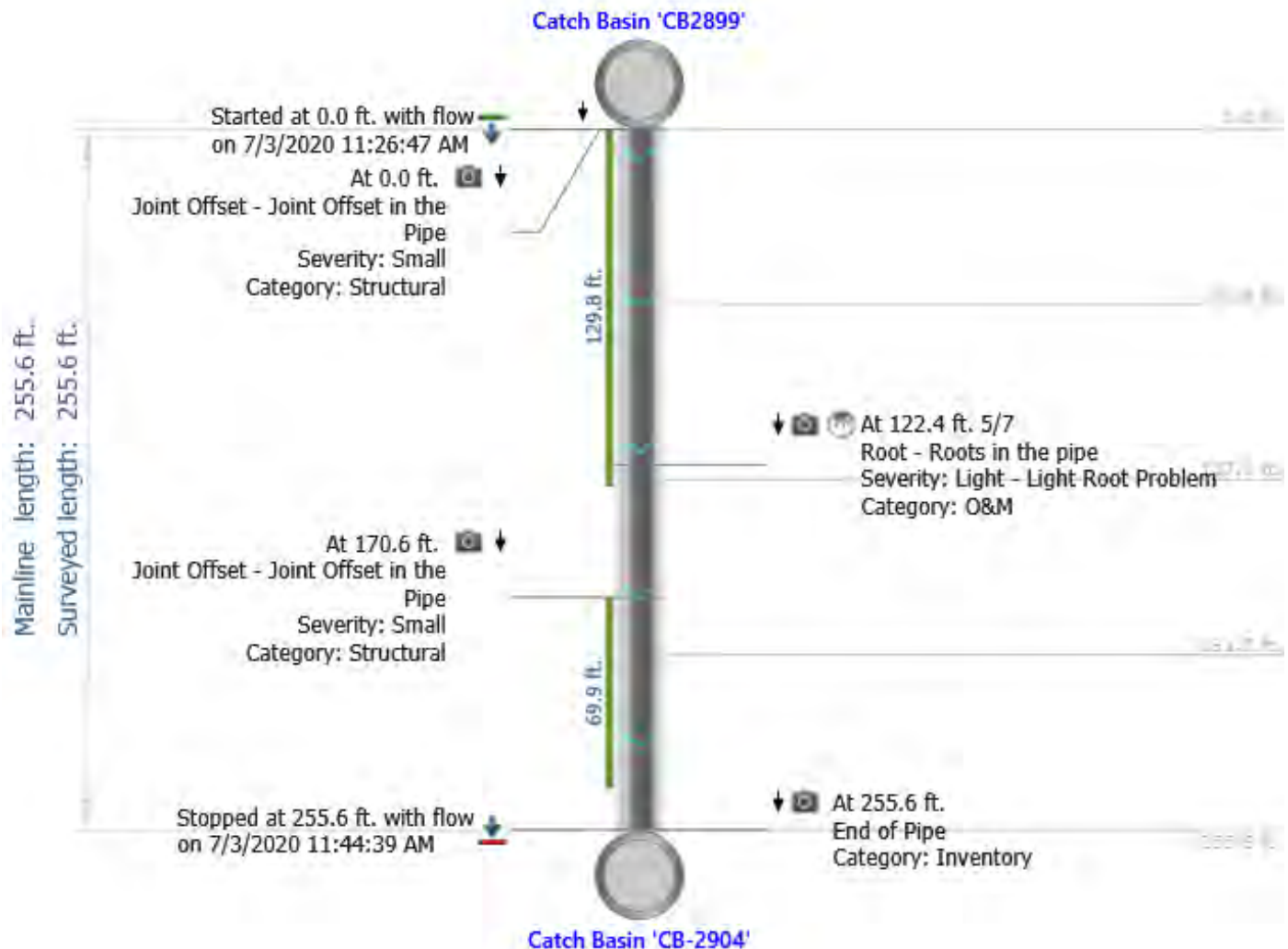




DPC Engineering, LLC
22 Northfield Road
Longmeadow, MA 01106
Phone: 413-567-6310
Email: cctv@dpcengineering.com

LONG-SD-CB2899-CB2904

City: Longmeadow, MA	Project name: Longmeadow, MA	Address: Willow Brook Road	Operator: Mike
Start date/time: 7/3/2020 11:26 AM	Direction: With the flow	Field-measured mainline length: 255.6 ft.	Surveyed length: 255.6 ft.
Upstream node: CB2899	Downstream node: CB-2904	Depth US:	Weather: Dry
Pipe type: Storm Drain (SD)	Pipe shape: Circular	Pipe material: Concrete Reinforced	Pipe diameter: 15.0 in.
Comments:			





DPC Engineering, LLC
22 Northfield Road
Longmeadow, MA 01106
Phone: 413-567-6310
Email: cctv@dpcengineering.com

LONG-SD-CB2899-CB2904

City: Longmeadow, MA	Project name: Longmeadow, MA	Address: Willow Brook Road	Operator: Mike
Start date/time: 7/3/2020 11:26 AM	Direction: D	Field-measured mainline length: 255.6 ft.	Surveyed length: 255.6 ft.
Upstream node: CB2899	Downstream node: CB-2904	Depth US:	Weather: Dry
Pipe type: Storm Drain (SD)	Pipe shape: Circular	Pipe material: Concrete Reinforced	Pipe diameter: 15.0 in.
Comments:			

Observations

Distance	Dir.	Length	From/To	Code	Modifier/Severity	Rating	Comments
0.0 ft.	D	129.8 ft.	/	Joint Offset	Small		



122.4 ft.	D	5 / 7	Root	Light
-----------	---	-------	------	-------



Observations

Distance	Dir.	Length	From/To	Code	Modifier/Severity	Rating	Comments
170.6 ft.	D	69.9 ft.	/	Joint Offset	Small		



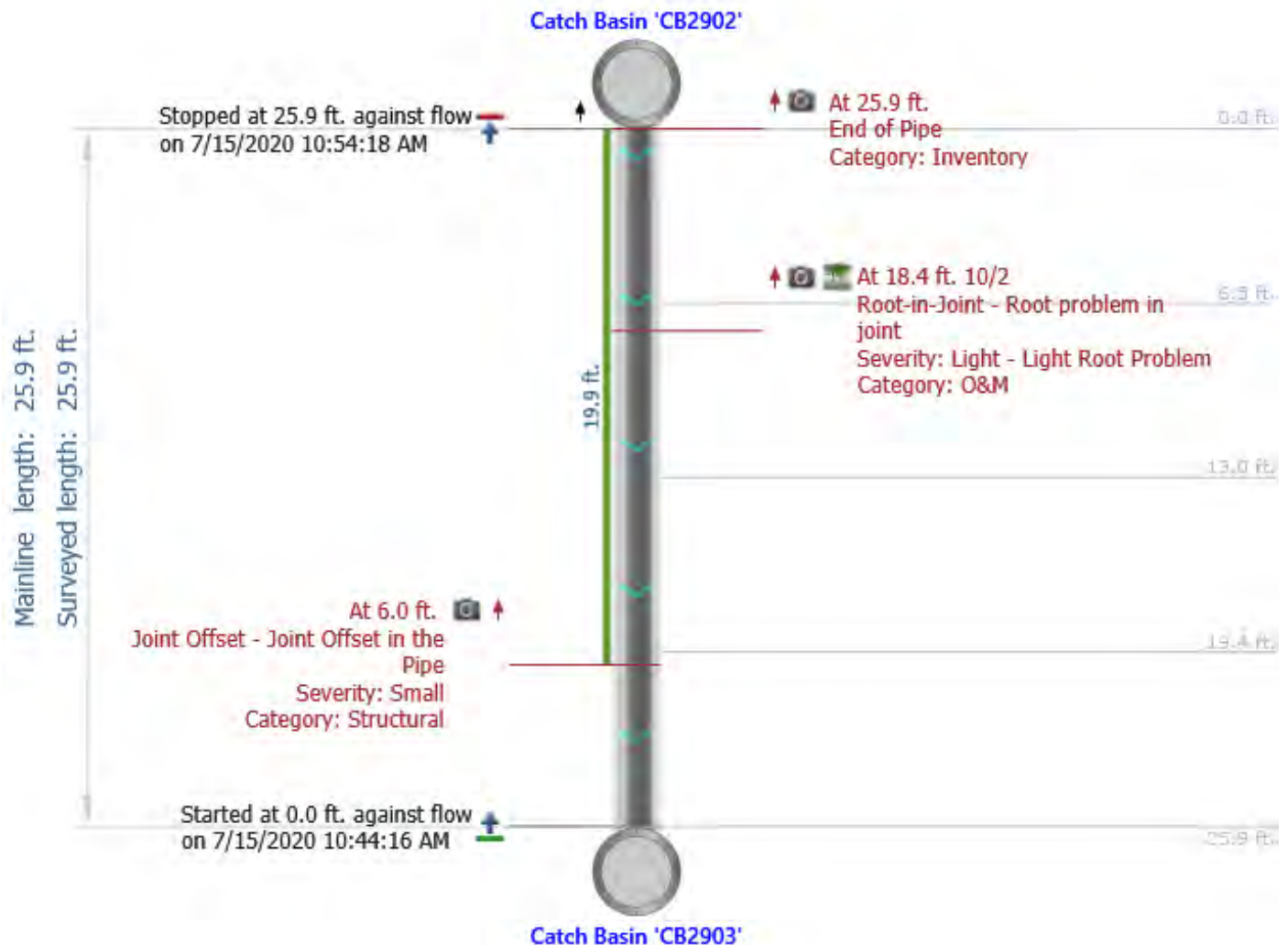
255.6 ft.	D		/	End of Pipe			
-----------	---	--	---	-------------	--	--	--





LONG-SD-CB2902-CB2903

City: Longmeadow, MA	Project name: Longmeadow, MA	Address: Williston Drive	Operator: Mike
Start date/time: 7/15/2020 10:44 AM	Direction: Against the flow	Field-measured mainline length: 25.9 ft.	Surveyed length: 25.9 ft.
Upstream node: CB2902	Downstream node: CB2903	Depth US:	Weather: Dry
Pipe type: Storm Drain (SD)	Pipe shape: Circular	Pipe material: Concrete Reinforced	Pipe diameter: 12.0 in.
Comments:			





DPC Engineering, LLC
22 Northfield Road
Longmeadow, MA 01106
Phone: 413-567-6310
Email: cctv@dpcengineering.com

LONG-SD-CB2902-CB2903

City: Longmeadow, MA	Project name: Longmeadow, MA	Address: Williston Drive	Operator: Mike
Start date/time: 7/15/2020 10:44 AM	Direction: U	Field-measured mainline length: 25.9 ft.	Surveyed length: 25.9 ft.
Upstream node: CB2902	Downstream node: CB2903	Depth US: 25.9 ft.	Weather: Dry
Pipe type: Storm Drain (SD)	Pipe shape: Circular	Pipe material: Concrete Reinforced	Pipe diameter: 12.0 in.
Comments:			

Observations

Distance	Dir.	Length	From/To	Code	Modifier/Severity	Rating	Comments
6.0 ft.	U	19.9 ft.	/	Joint Offset	Small		



18.4 ft.	U	10 / 2	Root-in-Joint	Light
----------	---	--------	---------------	-------



Observations

Distance	Dir.	Length	From/To	Code	Modifier/Severity	Rating	Comments
----------	------	--------	---------	------	-------------------	--------	----------

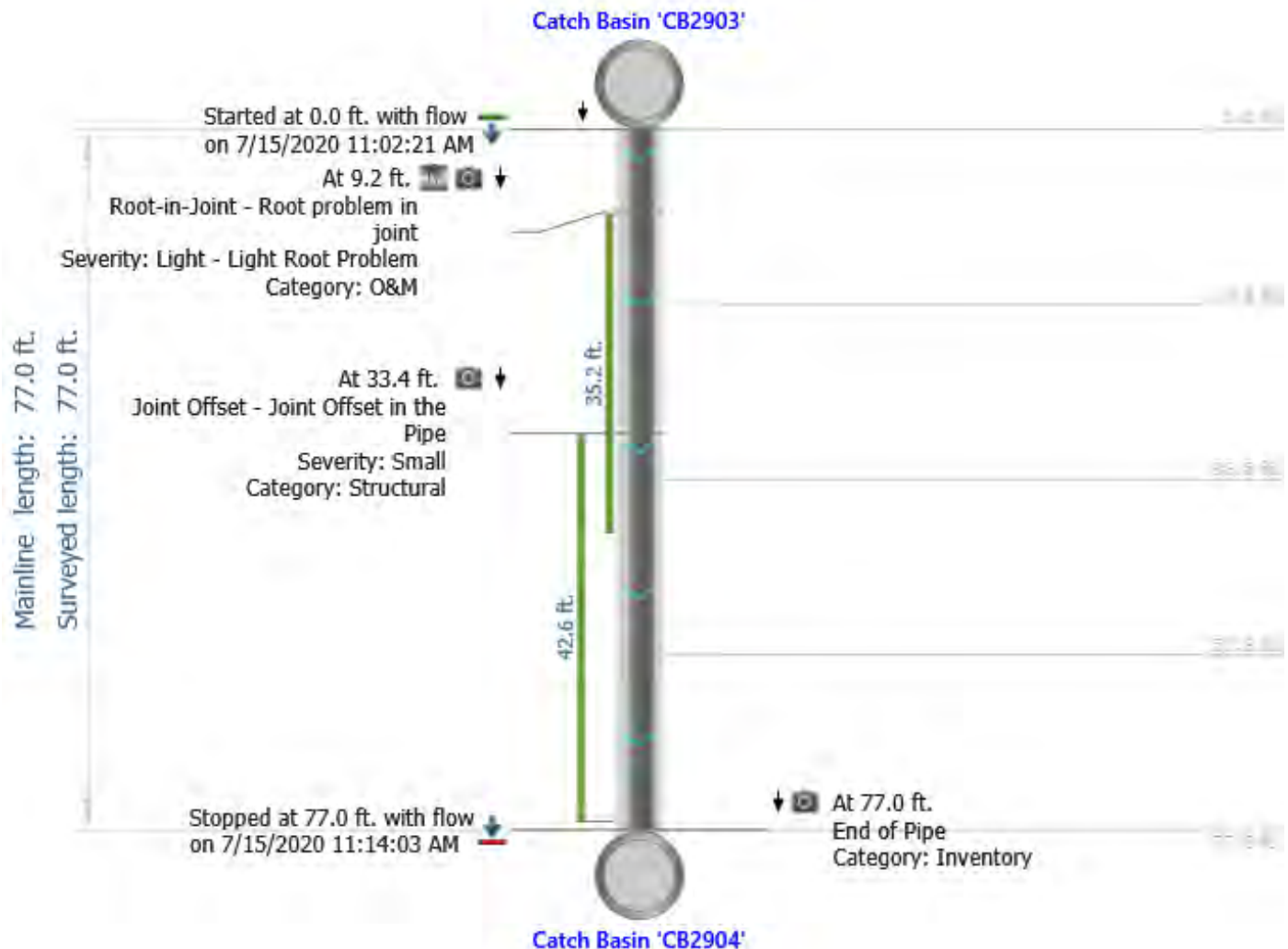
25.9 ft. U / End of Pipe





LONG-SD-CB2903-CB2904

City: Longmeadow, MA	Project name: Longmeadow, MA	Address: Williston Drive	Operator: Mike
Start date/time: 7/15/2020 11:02 AM	Direction: With the flow	Field-measured mainline length: 77.0 ft.	Surveyed length: 77.0 ft.
Upstream node: CB2903	Downstream node: CB2904	Depth US:	Weather: Dry
Pipe type: Storm Drain (SD)	Pipe shape: Circular	Pipe material: Concrete Reinforced	Pipe diameter: 12.0 in.
Comments:			





DPC Engineering, LLC
22 Northfield Road
Longmeadow, MA 01106
Phone: 413-567-6310
Email: cctv@dpcengineering.com

LONG-SD-CB2903-CB2904

City: Longmeadow, MA	Project name: Longmeadow, MA	Address: Williston Drive	Operator: Mike
Start date/time: 7/15/2020 11:02 AM	Direction: D	Field-measured mainline length: 77.0 ft.	Surveyed length: 77.0 ft.
Upstream node: CB2903	Downstream node: CB2904	Depth US: 77.0 ft.	Weather: Dry
Pipe type: Storm Drain (SD)	Pipe shape: Circular	Pipe material: Concrete Reinforced	Pipe diameter: 12.0 in.
Comments:			

Observations

Distance	Dir.	Length	From/To	Code	Modifier/Severity	Rating	Comments
9.2 ft.	D	35.2 ft.	/	Root-in-Joint	Light		



Observations

Distance	Dir.	Length	From/To	Code	Modifier/Severity	Rating	Comments
33.4 ft.	D	42.6 ft.	/	Joint Offset	Small		



77.0 ft.	D		/	End of Pipe			
----------	---	--	---	-------------	--	--	--





DPC Engineering, LLC
22 Northfield Road
Longmeadow, MA 01106
Phone: 413-567-6310
Email: cctv@dpcengineering.com

LONG-SD-CB2904-CB2898

City: Longmeadow, MA	Project name: Longmeadow, MA	Address: Willow Brook Road	Operator: Mike
Start date/time: 7/15/2020 12:08 PM	Direction: With the flow	Field-measured mainline length: 312.9 ft.	Surveyed length: 312.9 ft.
Upstream node: CB2904	Downstream node: CB2989	Depth US:	Weather: Dry
Pipe type: Storm Drain (SD)	Pipe shape: Circular	Pipe material: Concrete Reinforced	Pipe diameter: 18.0 in.
Comments:			





DPC Engineering, LLC
22 Northfield Road
Longmeadow, MA 01106
Phone: 413-567-6310
Email: cctv@dpcengineering.com

LONG-SD-CB2904-CB2898

City: Longmeadow, MA	Project name: Longmeadow, MA	Address: Willow Brook Road	Operator: Mike
Start date/time: 7/15/2020 12:08 PM	Direction: D	Field-measured mainline length: 312.9 ft.	Surveyed length: 312.9 ft.
Upstream node: CB2904	Downstream node: CB2989	Depth US: 312.9 ft.	Weather: Dry
Pipe type: Storm Drain (SD)	Pipe shape: Circular	Pipe material: Concrete Reinforced	Pipe diameter: 18.0 in.
Comments:			

Observations

Distance	Dir.	Length	From/To	Code	Modifier/Severity	Rating	Comments
26.6 ft.	D	282.5 ft.	/	Joint Offset	Small		



41.8 ft.	D	3 / 5	Root-in-Joint	Light
----------	---	-------	---------------	-------

