




## Observations

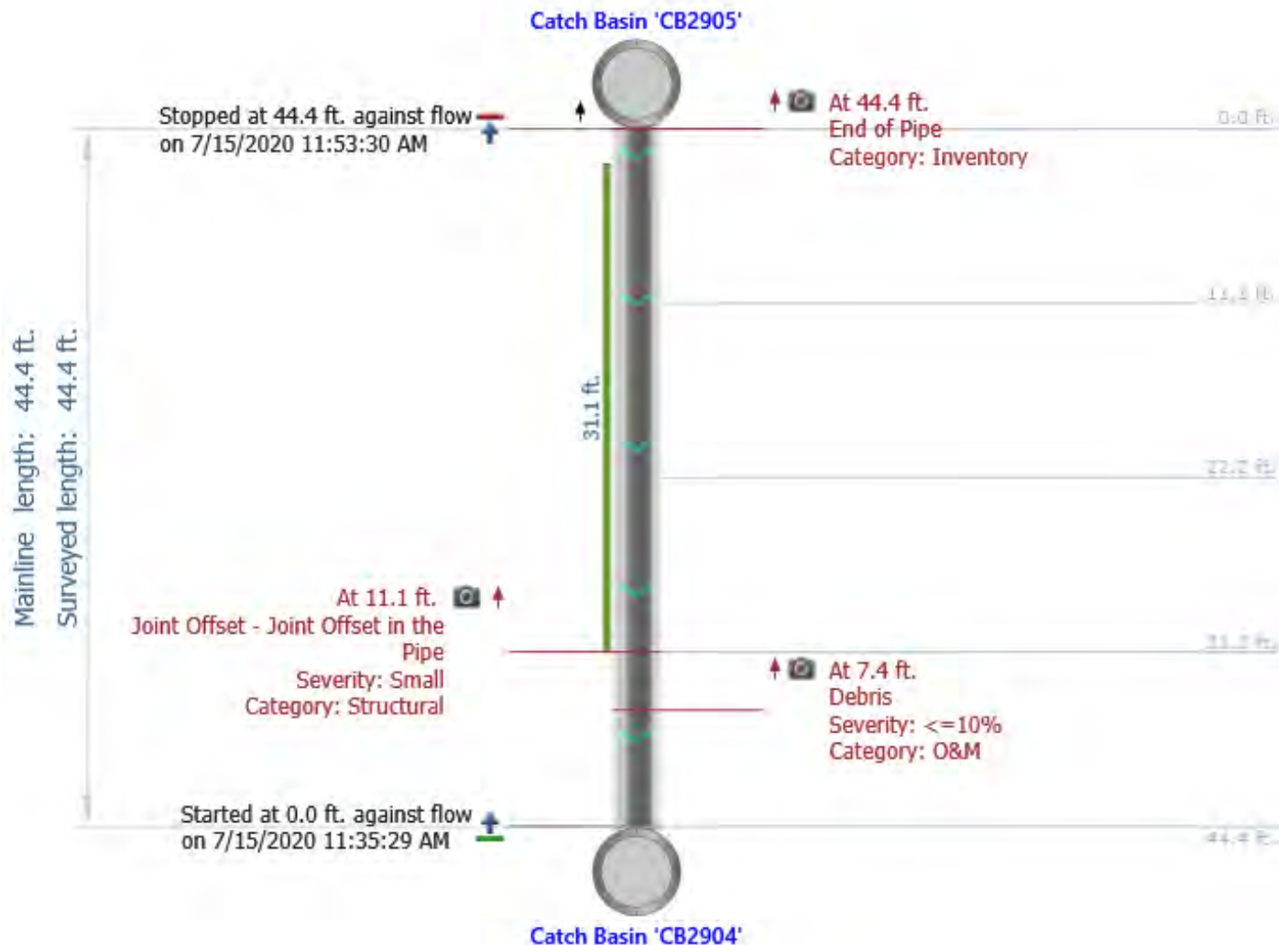
Distance	Dir.	Length	From/To	Code	Modifier/Severity	Rating	Comments
106.5 ft.	D		7 / 8	Root-in-Joint	Light		
							
235.7 ft.	D		5 / 8	Root-in-Joint	Light		
							
312.8 ft.	D		/	End of Pipe			
							



DPC Engineering, LLC  
22 Northfield Road  
Longmeadow, MA 01106  
Phone: 413-567-6310  
Email: cctv@dpcengineering.com

## LONG-SD-CB2905-CB2904

City: <b>Longmeadow, MA</b>	Project name: <b>Longmeadow, MA</b>	Address: <b>Willow Brook Road</b>	Operator: <b>Mike</b>
Start date/time: <b>7/15/2020 11:35 AM</b>	Direction: <b>Against the flow</b>	Field-measured mainline length: <b>44.4 ft.</b>	Surveyed length: <b>44.4 ft.</b>
Upstream node: <b>CB2905</b>	Downstream node: <b>CB2904</b>	Depth US:	Weather: <b>Dry</b>
Pipe type: <b>Storm Drain (SD)</b>	Pipe shape: <b>Circular</b>	Pipe material: <b>Concrete Reinforced</b>	Pipe diameter: <b>12.0 in.</b>
Comments:			





DPC Engineering, LLC  
22 Northfield Road  
Longmeadow, MA 01106  
Phone: 413-567-6310  
Email: cctv@dpcengineering.com

## LONG-SD-CB2905-CB2904

City: <b>Longmeadow, MA</b>	Project name: <b>Longmeadow, MA</b>	Address: <b>Willow Brook Road</b>	Operator: <b>Mike</b>
Start date/time: <b>7/15/2020 11:35 AM</b>	Direction: <b>U</b>	Field-measured mainline length: <b>44.4 ft.</b>	Surveyed length: <b>44.4 ft.</b>
Upstream node: <b>CB2905</b>	Downstream node: <b>CB2904</b>	Depth US: <b>12.0 in.</b>	Weather: <b>Dry</b>
Pipe type: <b>Storm Drain (SD)</b>	Pipe shape: <b>Circular</b>	Pipe material: <b>Concrete Reinforced</b>	Pipe diameter: <b>12.0 in.</b>
Comments:			

### Observations

Distance	Dir.	Length	From/To	Code	Modifier/Severity	Rating	Comments
7.4 ft.	U		/	Debris	<=10%		



## Observations

Distance	Dir.	Length	From/To	Code	Modifier/Severity	Rating	Comments
----------	------	--------	---------	------	-------------------	--------	----------

11.1 ft.	U	31.1 ft.	/	Joint Offset	Small		
----------	---	----------	---	--------------	-------	--	--



44.4 ft.	U		/	End of Pipe			
----------	---	--	---	-------------	--	--	--

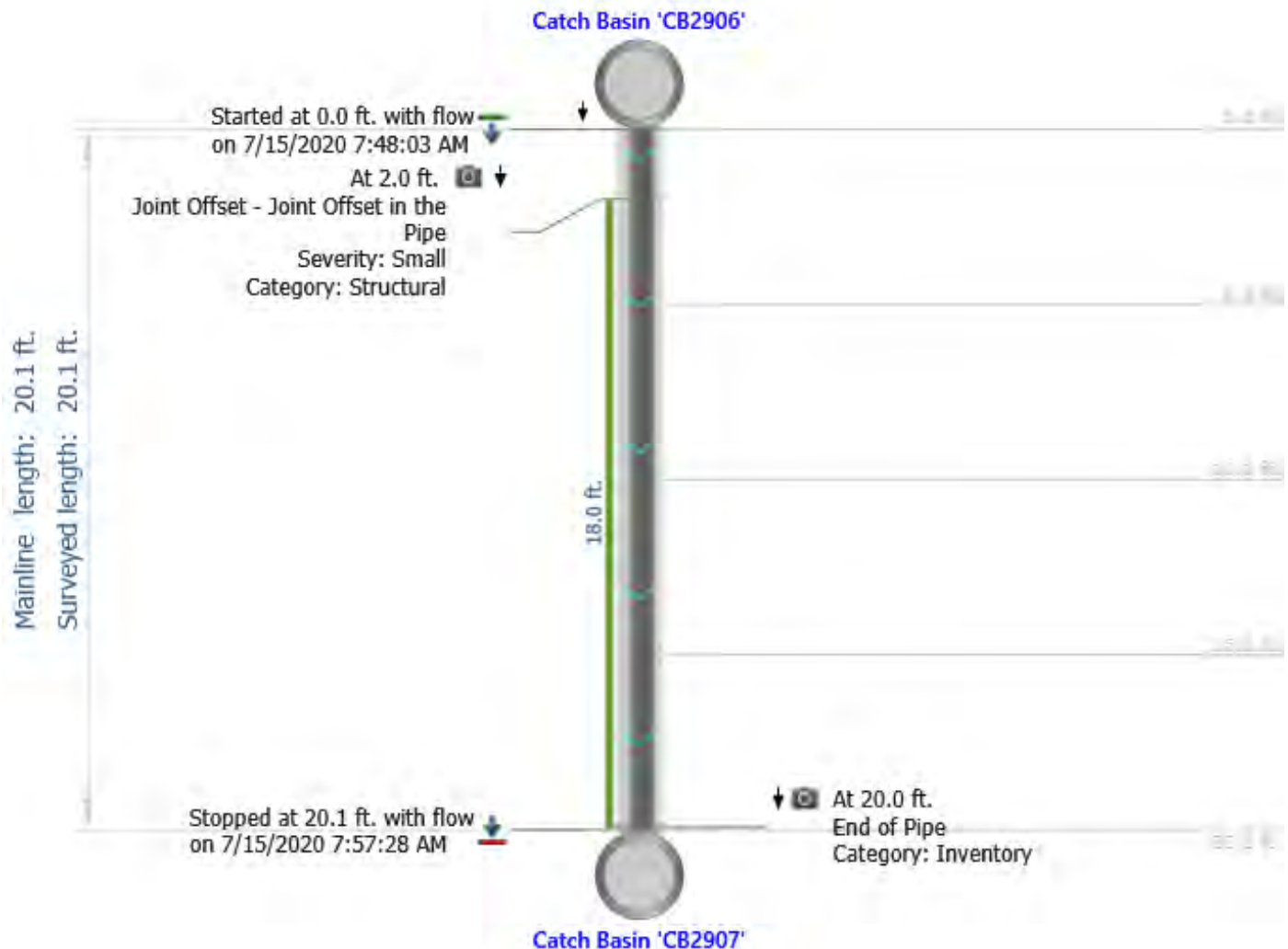




DPC Engineering, LLC  
22 Northfield Road  
Longmeadow, MA 01106  
Phone: 413-567-6310  
Email: cctv@dpcengineering.com

## LONG-SD-CB2906-CB2907

City: <b>Longmeadow, MA</b>	Project name: <b>Longmeadow, MA</b>	Address: <b>Willow Circle</b>	Operator: <b>Mike</b>
Start date/time: <b>7/15/2020 7:48 AM</b>	Direction: <b>With the flow</b>	Field-measured mainline length: <b>20.1 ft.</b>	Surveyed length: <b>20.1 ft.</b>
Upstream node: <b>CB2906</b>	Downstream node: <b>CB2907</b>	Depth US:	Weather: <b>Dry</b>
Pipe type: <b>Storm Drain (SD)</b>	Pipe shape: <b>Circular</b>	Pipe material: <b>Concrete Reinforced</b>	Pipe diameter: <b>12.0 in.</b>
Comments:			







DPC Engineering, LLC  
22 Northfield Road  
Longmeadow, MA 01106  
Phone: 413-567-6310  
Email: cctv@dpcengineering.com

## LONG-SD-CB2906-CB2907

City: <b>Longmeadow, MA</b>	Project name: <b>Longmeadow, MA</b>	Address: <b>Willow Circle</b>	Operator: <b>Mike</b>
Start date/time: <b>7/15/2020 7:48 AM</b>	Direction: <b>D</b>	Field-measured mainline length: <b>20.1 ft.</b>	Surveyed length: <b>20.1 ft.</b>
Upstream node: <b>CB2906</b>	Downstream node: <b>CB2907</b>	Depth US:	Weather: <b>Dry</b>
Pipe type: <b>Storm Drain (SD)</b>	Pipe shape: <b>Circular</b>	Pipe material: <b>Concrete Reinforced</b>	Pipe diameter: <b>12.0 in.</b>
Comments:			

### Observations

Distance	Dir.	Length	From/To	Code	Modifier/Severity	Rating	Comments
2.0 ft.	D	18.0 ft.	/	Joint Offset	Small		



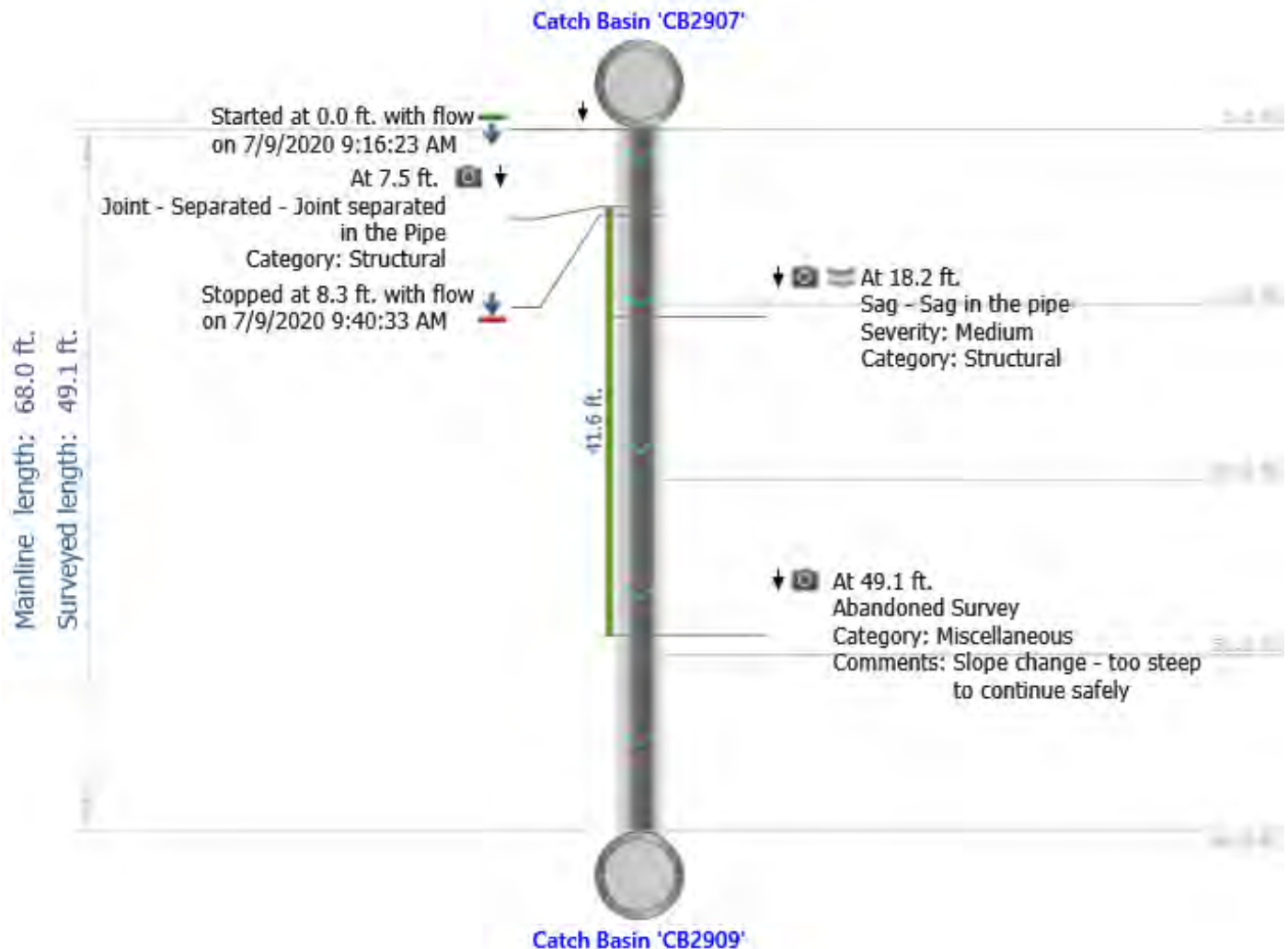
20.0 ft.	D	/	End of Pipe
----------	---	---	-------------





## LONG-SD-CB2907-CB2909

City: <b>Longmeadow, MA</b>	Project name: <b>Longmeadow, MA</b>	Address: <b>Willow Brook Road</b>	Operator: <b>Gray</b>
Start date/time: <b>7/9/2020 9:16 AM</b>	Direction: <b>With the flow</b>	Field-measured mainline length: <b>68.0 ft.</b>	Surveyed length: <b>49.1 ft.</b>
Upstream node: <b>CB2907</b>	Downstream node: <b>CB2909</b>	Depth US:	Weather: <b>Dry</b>
Pipe type: <b>Storm Drain (SD)</b>	Pipe shape: <b>Circular</b>	Pipe material: <b>Concrete Reinforced</b>	Pipe diameter: <b>12.0 in.</b>
Comments:			





DPC Engineering, LLC  
22 Northfield Road  
Longmeadow, MA 01106  
Phone: 413-567-6310  
Email: cctv@dpcengineering.com

## LONG-SD-CB2907-CB2909

City: <b>Longmeadow, MA</b>	Project name: <b>Longmeadow, MA</b>	Address: <b>Willow Brook Road</b>	Operator: <b>Gray</b>
Start date/time: <b>7/9/2020 9:16 AM</b>	Direction: <b>D</b>	Field-measured mainline length: <b>68.0 ft.</b>	Surveyed length: <b>49.1 ft.</b>
Upstream node: <b>CB2907</b>	Downstream node: <b>CB2909</b>	Depth US:	Weather: <b>Dry</b>
Pipe type: <b>Storm Drain (SD)</b>	Pipe shape: <b>Circular</b>	Pipe material: <b>Concrete Reinforced</b>	Pipe diameter: <b>12.0 in.</b>
Comments:			

### Observations

Distance	Dir.	Length	From/To	Code	Modifier/Severity	Rating	Comments
7.5 ft.	D	41.6 ft.	/	Joint - Separated			



18.2 ft.	D	/	Sag	Medium
----------	---	---	-----	--------





## Observations

Distance	Dir.	Length	From/To	Code	Modifier/Severity	Rating	Comments
49.1 ft.	D		/	Abandoned Survey			Slope change - too steep to continue safely

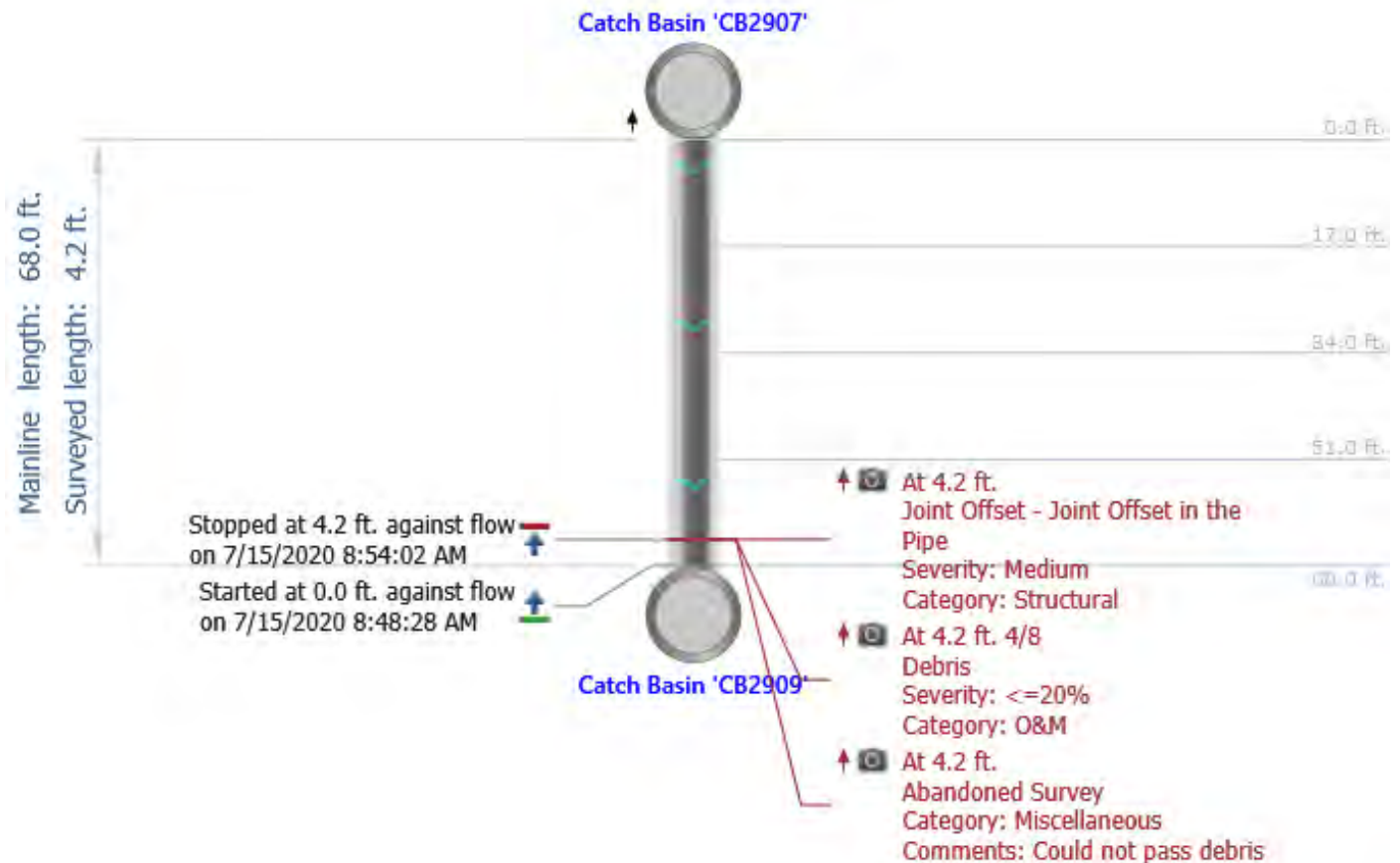




DPC Engineering, LLC  
22 Northfield Road  
Longmeadow, MA 01106  
Phone: 413-567-6310  
Email: cctv@dpcengineering.com

## LONG-SD-CB2907-CB2909

City: <b>Longmeadow, MA</b>	Project name: <b>Longmeadow, MA</b>	Address: <b>Willow Brook Road</b>	Operator: <b>Mike</b>
Start date/time: <b>7/15/2020 8:48 AM</b>	Direction: <b>Against the flow</b>	Field-measured mainline length: <b>68.0 ft.</b>	Surveyed length: <b>4.2 ft.</b>
Upstream node: <b>CB2907</b>	Downstream node: <b>CB2909</b>	Depth US:	Weather: <b>Dry</b>
Pipe type: <b>Storm Drain (SD)</b>	Pipe shape: <b>Circular</b>	Pipe material: <b>Concrete Reinforced</b>	Pipe diameter: <b>12.0 in.</b>
Comments:			





DPC Engineering, LLC  
22 Northfield Road  
Longmeadow, MA 01106  
Phone: 413-567-6310  
Email: cctv@dpcengineering.com

## LONG-SD-CB2907-CB2909

City: <b>Longmeadow, MA</b>	Project name: <b>Longmeadow, MA</b>	Address: <b>Willow Brook Road</b>	Operator: <b>Mike</b>
Start date/time: <b>7/15/2020 8:48 AM</b>	Direction: <b>U</b>	Field-measured mainline length: <b>68.0 ft.</b>	Surveyed length: <b>4.2 ft.</b>
Upstream node: <b>CB2907</b>	Downstream node: <b>CB2909</b>	Depth US:	Weather: <b>Dry</b>
Pipe type: <b>Storm Drain (SD)</b>	Pipe shape: <b>Circular</b>	Pipe material: <b>Concrete Reinforced</b>	Pipe diameter: <b>12.0 in.</b>
Comments:			

### Observations

Distance	Dir.	Length	From/To	Code	Modifier/Severity	Rating	Comments
4.2 ft.	U		/	Joint Offset	Medium		



4.2 ft.	U		4 / 8	Debris	<=20%		
---------	---	--	-------	--------	-------	--	--



## Observations

Distance	Dir.	Length	From/To	Code	Modifier/Severity	Rating	Comments
4.2 ft.	U		/	Abandoned Survey			Could not pass debris

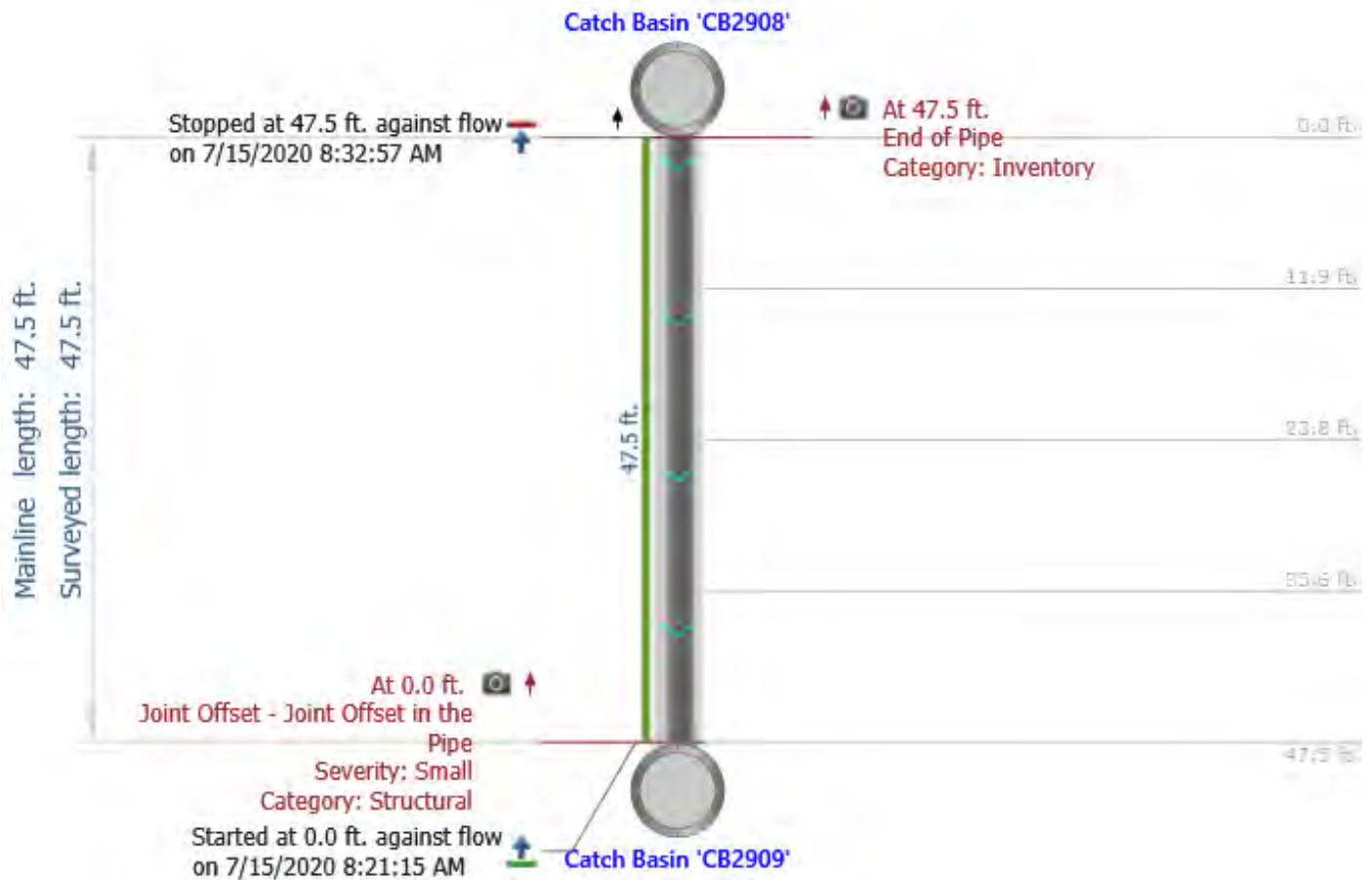




DPC Engineering, LLC  
22 Northfield Road  
Longmeadow, MA 01106  
Phone: 413-567-6310  
Email: cctv@dpcengineering.com

## LONG-SD-CB2908-CB2909

City: <b>Longmeadow, MA</b>	Project name: <b>Longmeadow, MA</b>	Address: <b>Willow Brook Road</b>	Operator: <b>Mike</b>
Start date/time: <b>7/15/2020 8:21 AM</b>	Direction: <b>Against the flow</b>	Field-measured mainline length: <b>47.5 ft.</b>	Surveyed length: <b>47.5 ft.</b>
Upstream node: <b>CB2908</b>	Downstream node: <b>CB2909</b>	Depth US:	Weather: <b>Dry</b>
Pipe type: <b>Storm Drain (SD)</b>	Pipe shape: <b>Circular</b>	Pipe material: <b>Concrete Reinforced</b>	Pipe diameter: <b>12.0 in.</b>
Comments:			







DPC Engineering, LLC  
22 Northfield Road  
Longmeadow, MA 01106  
Phone: 413-567-6310  
Email: cctv@dpcengineering.com

## LONG-SD-CB2908-CB2909

City: <b>Longmeadow, MA</b>	Project name: <b>Longmeadow, MA</b>	Address: <b>Willow Brook Road</b>	Operator: <b>Mike</b>
Start date/time: <b>7/15/2020 8:21 AM</b>	Direction: <b>U</b>	Field-measured mainline length: <b>47.5 ft.</b>	Surveyed length: <b>47.5 ft.</b>
Upstream node: <b>CB2908</b>	Downstream node: <b>CB2909</b>	Depth US: <b>12.0 in.</b>	Weather: <b>Dry</b>
Pipe type: <b>Storm Drain (SD)</b>	Pipe shape: <b>Circular</b>	Pipe material: <b>Concrete Reinforced</b>	Pipe diameter: <b>12.0 in.</b>
Comments:			

### Observations

Distance	Dir.	Length	From/To	Code	Modifier/Severity	Rating	Comments
0.0 ft.	U	47.5 ft.	/	Joint Offset	Small		



47.5 ft.	U	/	End of Pipe
----------	---	---	-------------

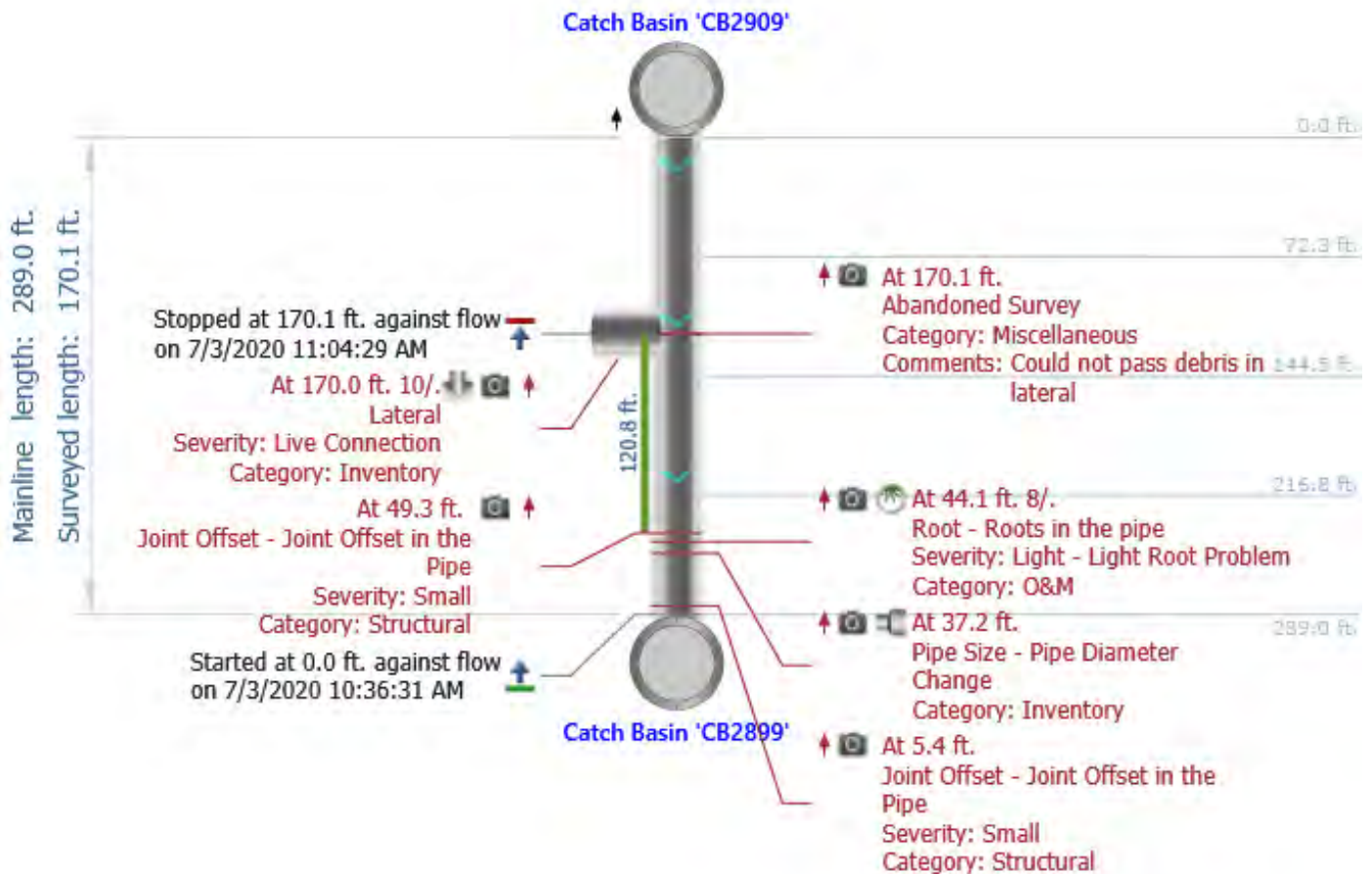




DPC Engineering, LLC  
22 Northfield Road  
Longmeadow, MA 01106  
Phone: 413-567-6310  
Email: cctv@dpcengineering.com

## LONG-SD-CB2909-CB2899

City: <b>Longmeadow, MA</b>	Project name: <b>Longmeadow, MA</b>	Address: <b>Willow Brook Road</b>	Operator: <b>Mike</b>
Start date/time: <b>7/3/2020 10:36 AM</b>	Direction: <b>Against the flow</b>	Field-measured mainline length: <b>289.0 ft.</b>	Surveyed length: <b>170.1 ft.</b>
Upstream node: <b>CB2909</b>	Downstream node: <b>CB2899</b>	Depth US:	Weather: <b>Dry</b>
Pipe type: <b>Storm Drain (SD)</b>	Pipe shape: <b>Circular</b>	Pipe material: <b>Concrete Reinforced</b>	Pipe diameter: <b>15.0 in.</b>
Comments:			





DPC Engineering, LLC  
22 Northfield Road  
Longmeadow, MA 01106  
Phone: 413-567-6310  
Email: cctv@dpcengineering.com

## LONG-SD-CB2909-CB2899

City: <b>Longmeadow, MA</b>	Project name: <b>Longmeadow, MA</b>	Address: <b>Willow Brook Road</b>	Operator: <b>Mike</b>
Start date/time: <b>7/3/2020 10:36 AM</b>	Direction: <b>U</b>	Field-measured mainline length: <b>289.0 ft.</b>	Surveyed length: <b>170.1 ft.</b>
Upstream node: <b>CB2909</b>	Downstream node: <b>CB2899</b>	Depth US:	Weather: <b>Dry</b>
Pipe type: <b>Storm Drain (SD)</b>	Pipe shape: <b>Circular</b>	Pipe material: <b>Concrete Reinforced</b>	Pipe diameter: <b>15.0 in.</b>
Comments:			

### Observations

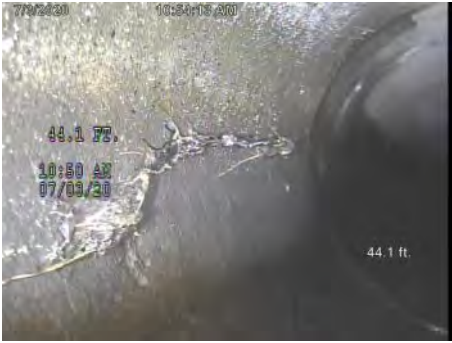





Distance	Dir.	Length	From/To	Code	Modifier/Severity	Rating	Comments
5.4 ft.	U		/	Joint Offset	Small		



37.2 ft.	U		/	Pipe Size			
----------	---	--	---	-----------	--	--	--



## Observations

Distance	Dir.	Length	From/To	Code	Modifier/Severity	Rating	Comments
44.1 ft.	U		8 /	Root	Light		
							
49.3 ft.	U	120.8 ft.	/	Joint Offset	Small		
<div style="display: flex; justify-content: space-around;">  <div style="font-size: small;">             Distance: 49.3 ft.              Joint Offset - Joint Offset in the Pipe              Small              Clock from:              Clock to:              Rating:           </div>  <div style="font-size: small;">             Distance: 49.3 ft.              Joint Offset - Joint Offset in the Pipe              Small              Clock from:              Clock to:              Rating:           </div>  </div>							
170.0 ft.	U		10 /	Lateral	Live Connection		
<div style="display: flex; justify-content: space-around;">   </div>							

## Observations

Distance	Dir.	Length	From/To	Code	Modifier/Severity	Rating	Comments
170.1 ft.	U		/	Abandoned Survey			Could not pass debris in lateral

