

TOWN OF LONGMEADOW, MASSACHUSETTS

Plan of WILLOW BROOK ROAD STORM DRAIN REHABILITATION

SELECT BOARD

THOMAS LACHIUSA, CHAIRPERSON
MARC STRANGE, VICE CHAIR
STEVEN MARANTZ, CLERK
RICHARD FOSTER, MEMBER
MARK P. GOLD, MEMBER

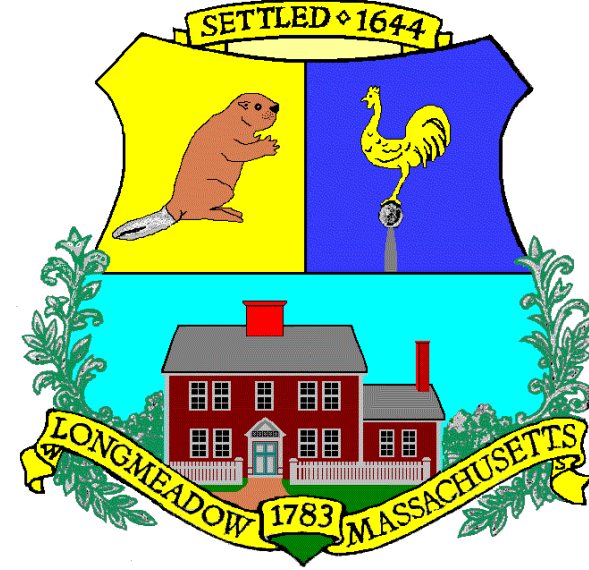
TOWN MANAGER

LYN N. SIMMONS

DEPARTMENT OF PUBLIC WORKS

MARIO MAZZA, DIRECTOR
TIMOTHY KEANE, P.E., LSP TOWN ENGINEER
PETER THURBER, ASSISTANT DIRECTOR
WATER & WASTEWATER OPERATIONS

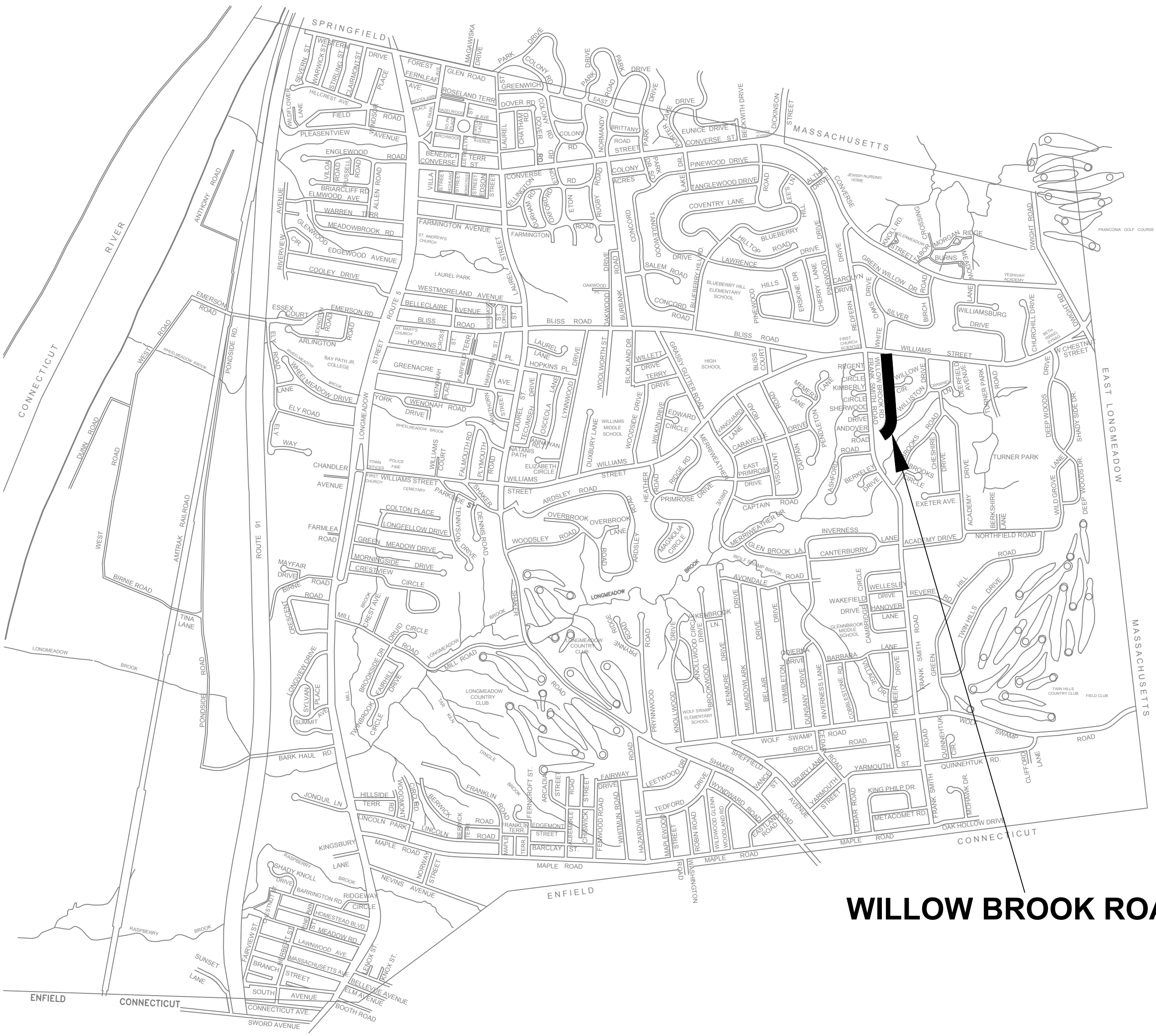
Longmeadow
Engineering
Department



COMPLETE SET 5 SHEETS

INDEX

SHEET NUMBER	DESCRIPTION
1	COVER SHEET
2	GENERAL NOTES
3-4	CONSTRUCTION PLANS & PROFILES
5	DETAILS



LOCUS MAP
Not To Scale









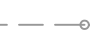
GENERAL NOTES








1. EXISTING UTILITY LOCATIONS ARE BASED ON AVAILABLE INFORMATION. THE CONTRACTOR SHALL DETERMINE THE EXACT LOCATION OF UTILITIES BY TEST PIT OR OTHER METHOD WHERE REQUIRED. SECTIONS OF PROPOSED DRAIN MAY NEED TO BE ADJUSTED BASED ON LOCATION AND DEPTH OF EXISTING UTILITIES. THE LOCATION OF UNDERGROUND UTILITIES IS APPROXIMATE AND NOT GUARANTEED TO BE COMPLETE OR ACCURATE. THE CONTRACTOR IS RESPONSIBLE FOR VERIFYING THE LOCATIONS AND ELEVATION OF EXISTING UTILITY LINES AND STRUCTURE PRIOR TO STARTING WORK.
2. THE CONTRACTOR SHALL REMOVE AND REPLACE FENCES, MAILBOXES, CURBING, ETC. AS NECESSARY, AND WITH THE ENGINEER'S APPROVAL. CONDITION OF REPLACED ITEMS SHALL BE EQUAL OR BETTER THAN ORIGINAL CONDITION PRIOR TO REMOVAL.
3. BORING LOCATIONS SHOWN ARE APPROXIMATE ONLY AND BORINGS ARE NOT WARRANTED OR GUARANTEED IN ANY WAY TO REPRESENT THE EXISTING CONDITIONS. BORING LOGS ARE INCLUDED IN THE SPECIFICATIONS.
4. THE CONTRACTOR SHALL TAKE NECESSARY PRECAUTIONS TO MAINTAIN EXISTING WATER, SEWER, DRAIN, AND GAS, SERVICES TO RESIDENTS ALONG THE PROJECT ROUTE. DAMAGED SERVICES SHALL BE REPAIRED IMMEDIATELY AT NO ADDITIONAL COST TO THE OWNER.
5. LOCATION OF PROPOSED SERVICES IS APPROXIMATE ONLY, AND MAY BE ADJUSTED. THE CONTRACTOR SHALL ASSIST ENGINEER WITH LOCATING THE EXISTING UTILITIES.
6. WHEREVER POSSIBLE, THE SANITARY SEWERS SHALL BE LAID AT LEAST 10 FEET HORIZONTALLY AND 18 INCHES VERTICALLY FROM ANY EXISTING OR PROPOSED WATER MAIN.
7. STORM AND SANITARY BY-PASS PUMPING, IF REQUIRED, SHALL BE PROVIDED BY THE CONTRACTOR, AND INCLUDED IN APPROPRIATE BID ITEMS.
8. ALL TEST PIT WORK MUST BE COMPLETED PRIOR TO COMMENCING DRAIN MAIN CONSTRUCTION WORK BY THE CONTRACTOR. THE ENGINEER SHALL USE TEST PIT INFORMATION FOR DIRECTING THE CONTRACTOR, IN THE EVENT OF A PROPOSED CONFLICT WITH THE ACTUAL EXISTING UTILITY LOCATIONS AND/OR ELEVATIONS.
9. WATER MAIN CROSSINGS AREA CRITICAL FACTOR FOR ESTABLISHED PROPOSED DRAIN LAYOUT AND ELEVATIONS.
10. IN THE EVENT ADDITIONAL EXCAVATION IS REQUIRED FOR THE PROPOSED DRAIN TO CROSS EXISTING UTILITIES, THE ACTUAL EXCAVATION DEPTH WILL BE USED FOR PAYMENT OF THE DRAIN TRENCH EXCAVATION BID ITEMS.
11. ADJUSTMENTS TO THE PROPOSED DRAIN LAYOUT AND ELEVATIONS SHALL NOT BE CONSIDERED AS CAUSE FOR ADDITIONAL PAYMENTS. THE CONTRACTOR SHALL NOT MAKE PROPOSED DRAIN LAYOUT AND ELEVATION ADJUSTMENTS WITHOUT THE WRITTEN APPROVAL FROM THE ENGINEER.
12. DIVERSION AND CONTROL OF SANITARY AND STORM FLOWS IN THE EXISTING SEWER AND DRAIN ARE THE RESPONSIBILITY OF THE CONTRACTOR AND INCLUDED IN APPROPRIATE BID ITEMS. THE CONTRACTOR'S INTENDED METHODS FOR DIVERSION AND CONTROL SHALL BE SUBMITTED TO THE TOWN ENGINEER FOR REVIEW.
13. THE CONTRACTOR SHALL FIELD VERIFY DIRECTION OF GRAVITY INLET AND LOW PRESSURE OUTLET ORIENTATION PRIOR TO ORDERING GRINDER PUMPS.
14. MINIMUM PITCH FOR HOUSE SERVICE PIPES SHALL BE 1/4" PER FOOT, UNLESS OTHERWISE APPROVED BY THE ENGINEER.
15. MANHOLES 48"Ø UNLESS NOTED OTHERWISE.
15. DE-WATERING OF THE TRENCH FOR PROPOSED STORM DRAIN, SANITARY SEWER, AND WATER SYSTEM, IF REQUIRED, SHALL BE PROVIDED BY THE CONTRACTOR, AND INCLUDED IN THE APPROPRIATE BID ITEMS.

ABBREVIATIONS

ASBESTOS CEMENT	AC	MAIL BOX	MB
BITUMINOUS CONCRETE	BIT CONC	MANHOLE	MH
BOTTOM OF EXPLORATION	BOE	MECHANICAL JOINT	MJ
CAST IRON	CI	NOT IN THIS CONTRACT	NITC
CATCH BASIN	CB	NOT TO SCALE	NTS
CHAIN LINK FENCE	C/L FEN	PAVED WALK	PW
CHIMNEY	CHIM	POLYETHYLENE PIPE	PE
CLASS OF PIPE	CL	POLY-VINYL CHLORIDE	PVC
CLEANOUT	CO	PROPERTY LINE	PL
CONCRETE	CONC	PUMP STATION	P.S.
CONCRETE WALK	C	REINFORCED CONCRETE PIPE	RCP
COPPER	CU	RIGHT OF WAY	R.O.W.
CORRUGATED METAL PIPE	CMP	ROCK PILE	RP
CUT SPIKE	CS	SANITARY MANHOLE	SMH
DEBRIS	DB	STANDARD DIMENSION RATIO	SDR
DIRT PILE	DP	STATION	STA
DRAIN MANHOLE	DMH	STONE BOUND	SB
DUCTILE IRON	DI	STREET LINE	SL
EASEMENT LINE ELEVATION	EL	TEMPORARY BENCH MARK	TBM
EROSION CONTROL	EC	TELEPHONE POLE	TP
GAS GATE	GG	TRAFFIC CONTROL	TC
GATE VALVE	GV	UNDER CONSTRUCTION	UC
GEOGRAPHICAL INFORMATION SYSTEMS	GIS	UTILITY POLE	U.P.
GRANITE CURB	GR CURB	UTILITY STRUCTURE	UT
GUY WIRE	GY	UNDELINEATED WETLAND AREA	UWA
GUY POLE	GP	VITRIFIED CLAY PIPE	VC
HOUSE	HSE	WATER GATE	WG
HYDRANT	HYD	WATER SERVICE	WS
INVERT	INV	WATER TIGHT COVER	WTC
IRON PIPE	IP		

LEGEND

PROPOSED DRAIN STRUCTURE	
EXISTING DRAIN STRUCTURE	
EXISTING SANITARY MANHOLE	
EXISTING WATER VALVE	
EXISTING HYDRANT	
UTILITY POLE	
TREE	
BORING LOCATION	
POLE ANCHOR	

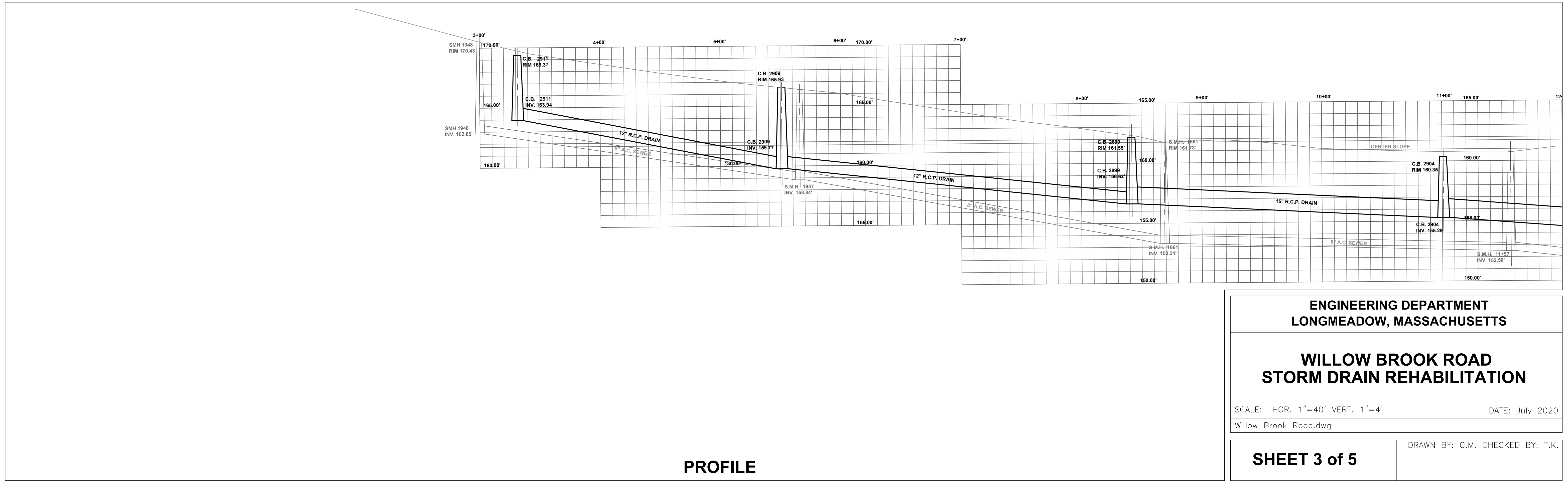
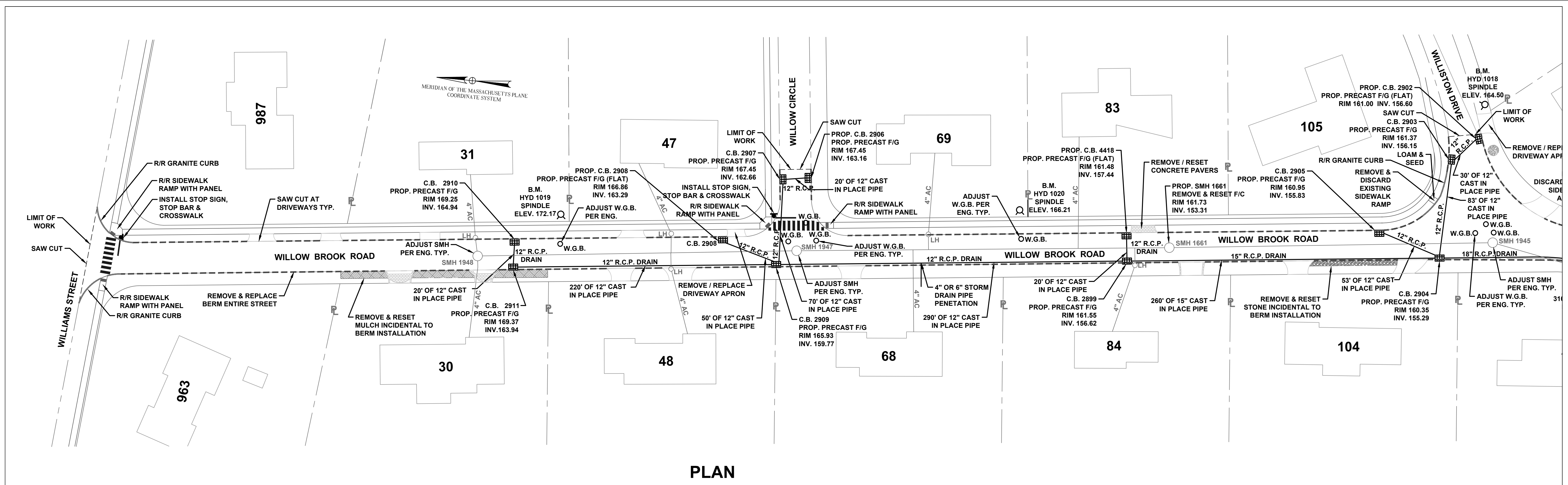
PROPOSED DRAIN LINE	
EXISTING SEWER LINE	
EXISTING WATER LINE	
EXISTING DRAIN LINE	
DRAIN LINE TO ABANDON	
EXISTING GAS LINE	
OVERHEAD & UNDERGROUND ELEC.	

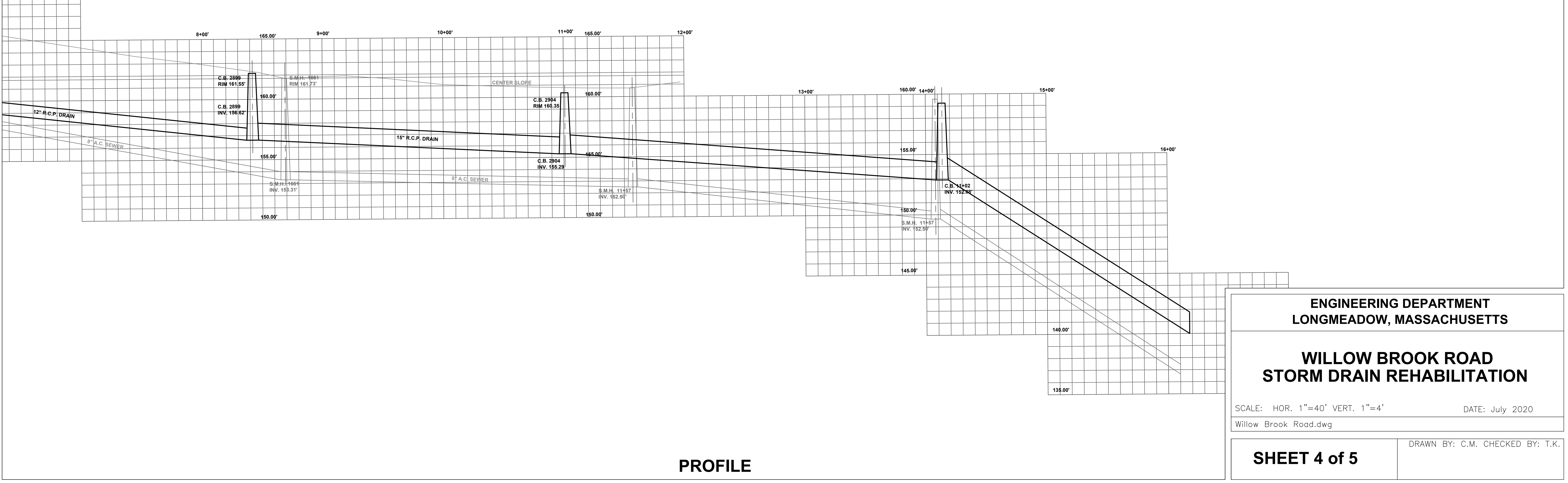
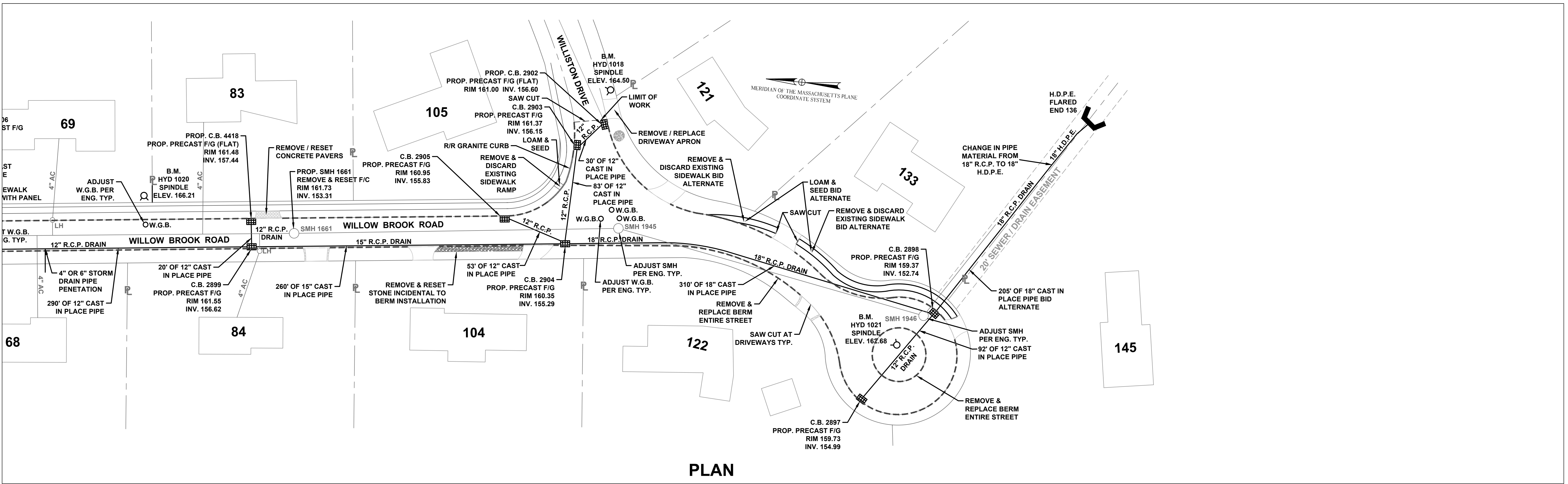
ENGINEERING DEPARTMENT
LONGMEADOW, MASSACHUSETTS

LEGEND, ABBREVIATION
& GENERAL NOTES

SCALE: HOR. 1"=40' VERT. 1"=4' DATE: July 2020

Willow Brook Road.dwg





ENGINEERING DEPARTMENT
LONGMEADOW, MASSACHUSETTS


**WILLOW BROOK ROAD
STORM DRAIN REHABILITATION**

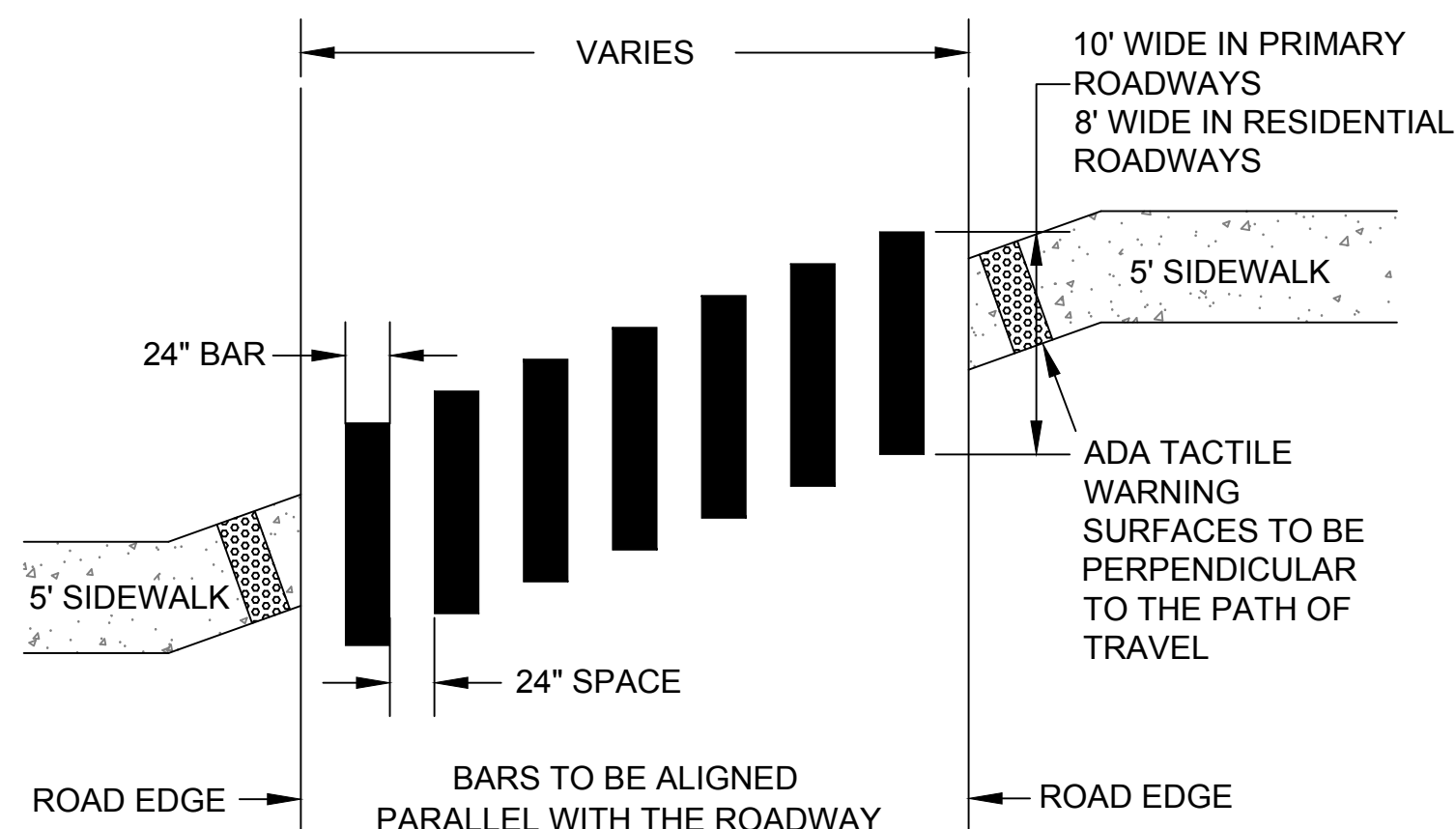
SCALE: HOR. 1"=40' VERT. 1"=4' DATE: July 2020
Willow Brook Road.dwg

SHEET 4 of 5

DRAWN BY: C.M. CHECKED BY: T.K.



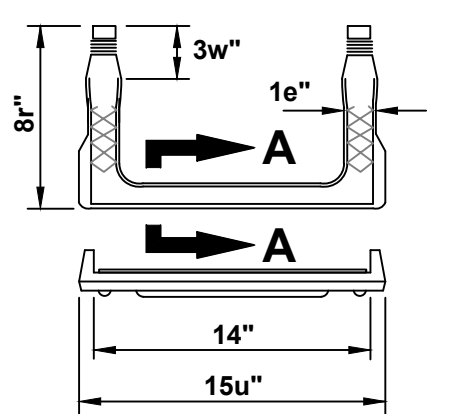
IDENTIFICATION NUMBER	SIZE OF SIGN		TEXT
	WIDTH (IN)	HEIGHT (IN)	
R1-1	30	30	



CROSSWALKS

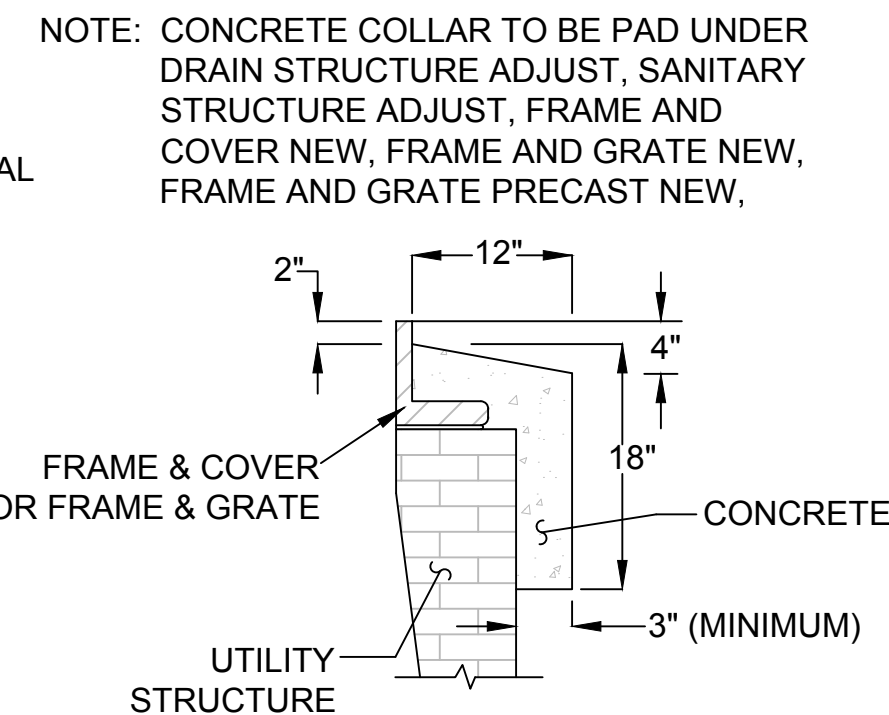


48" PRECAST SANITARY SEWER MANHOLE
NOT TO SCALE

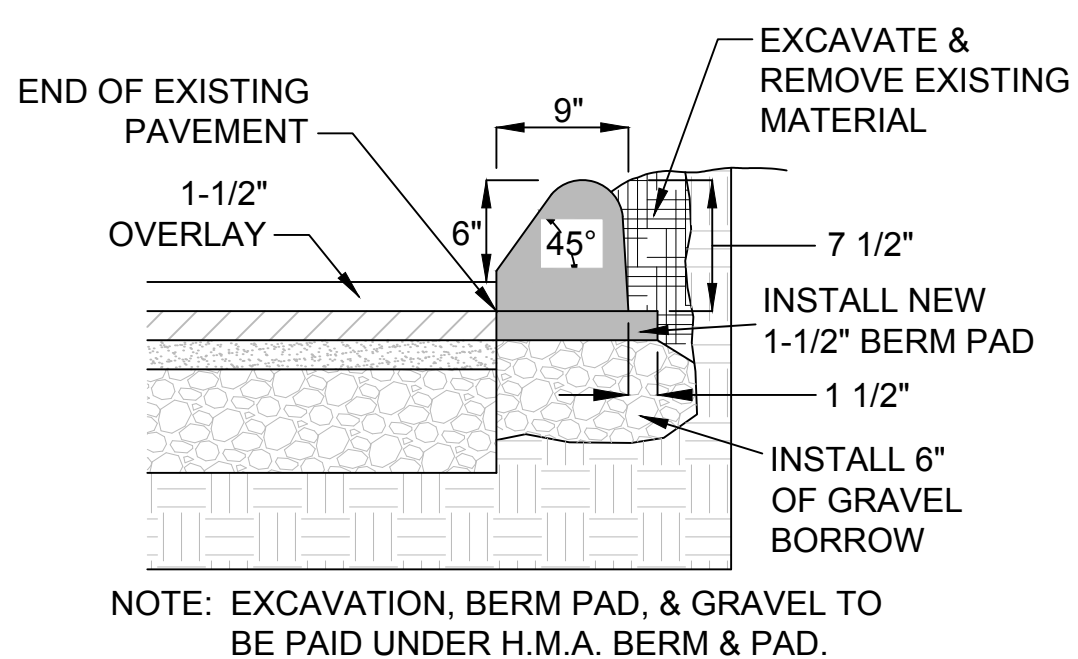


SECTION A-A

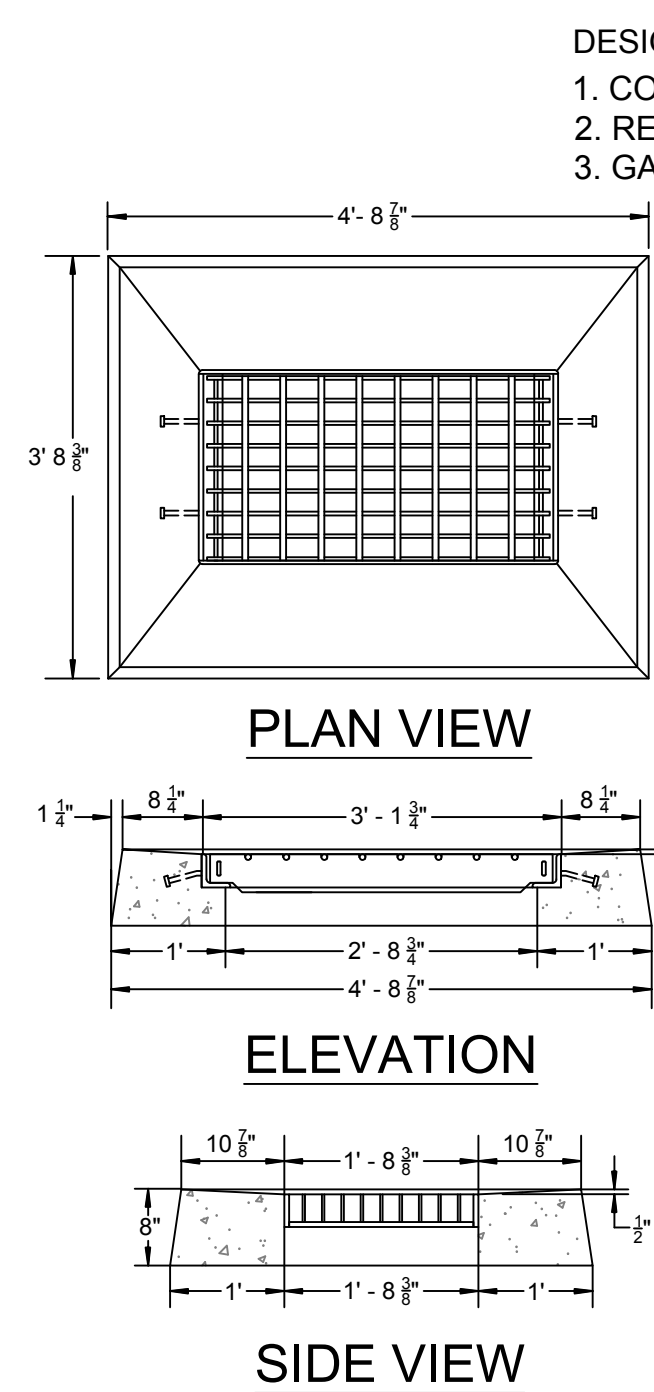
STANDARD MANHOLE RUNG



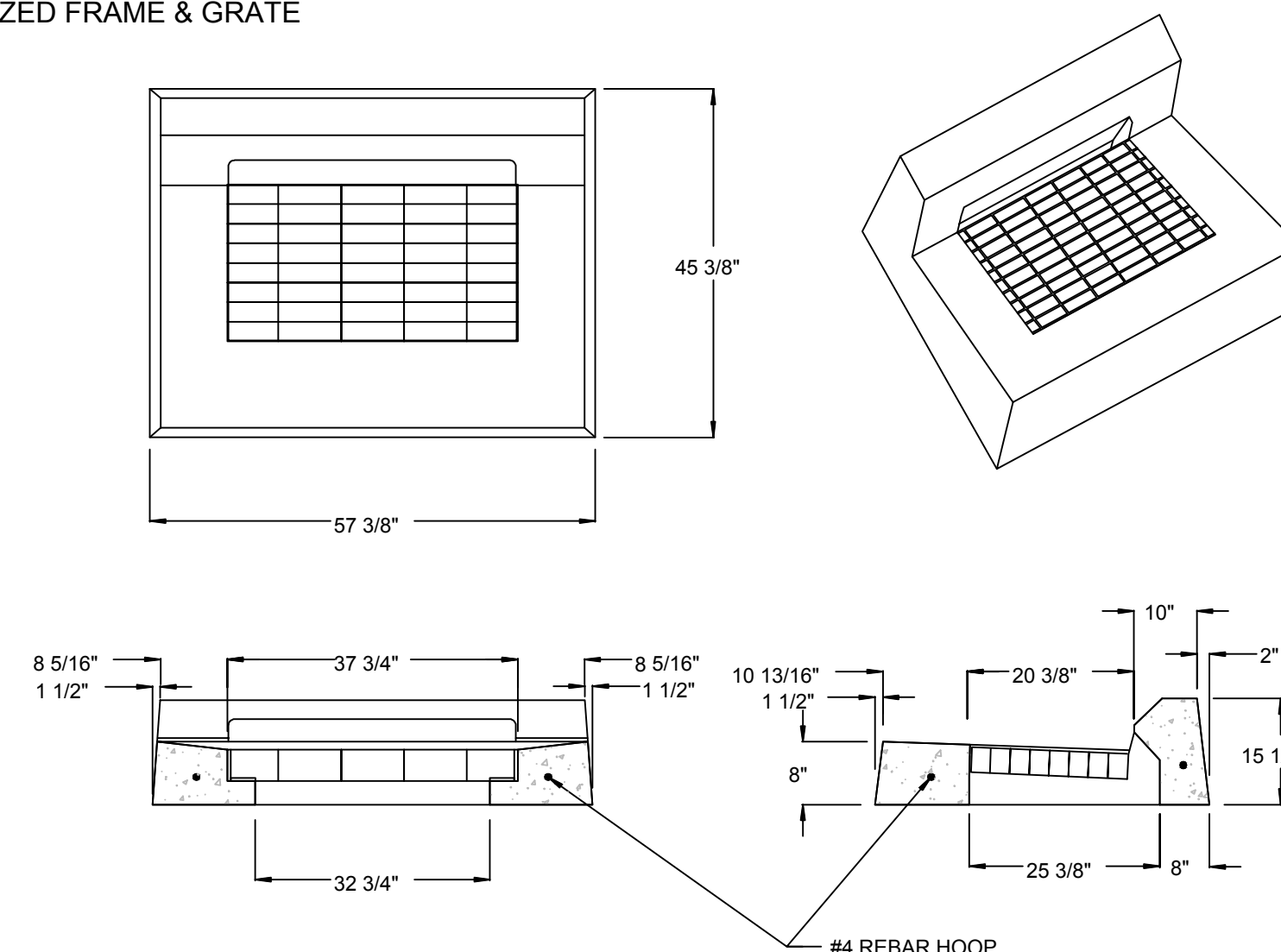
CONCRETE COLLAR
N.T.S.



H.M.A. BERM & PAD,
TYPE 2
N.T.S.

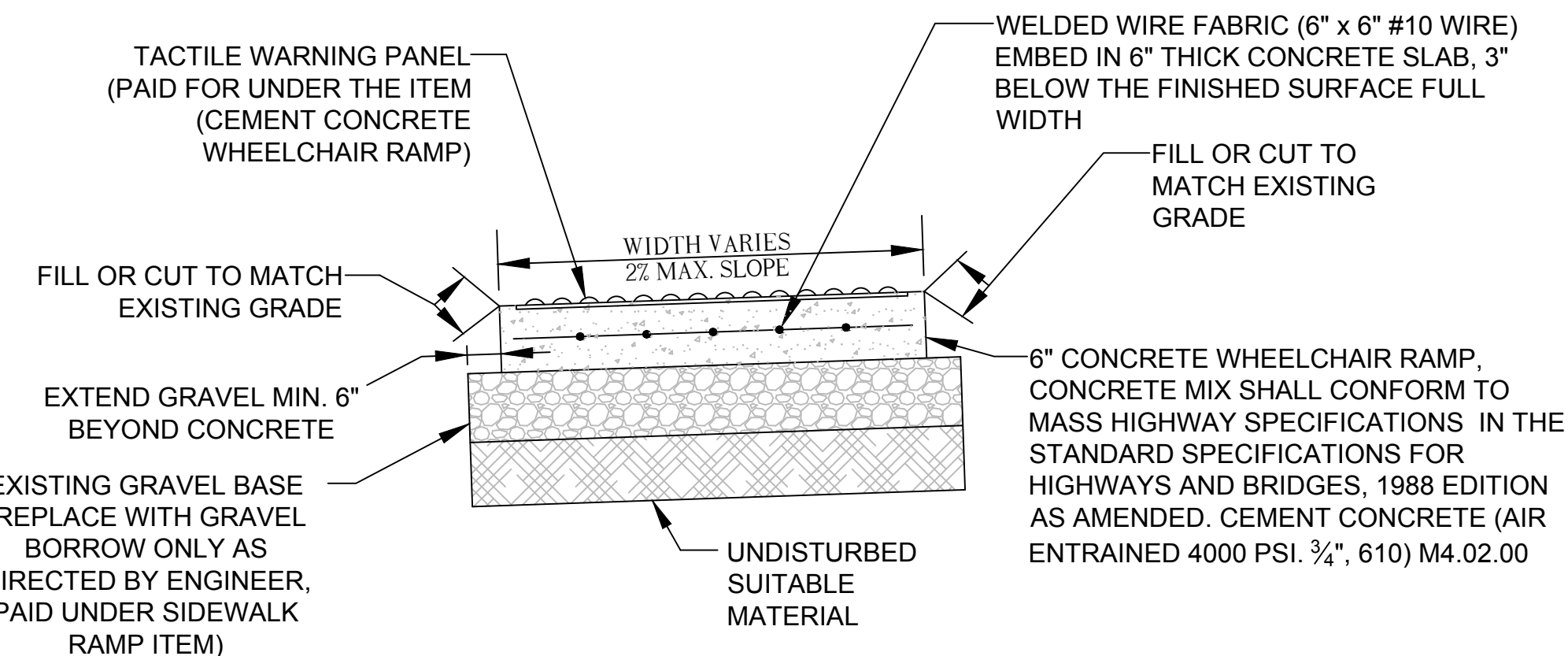


TYPE "C-L" CATCH BASIN
TOP (ITEM 222.2)



TYPE "C" TOP SPECIAL (ITEM 222.1)
N.T.S.

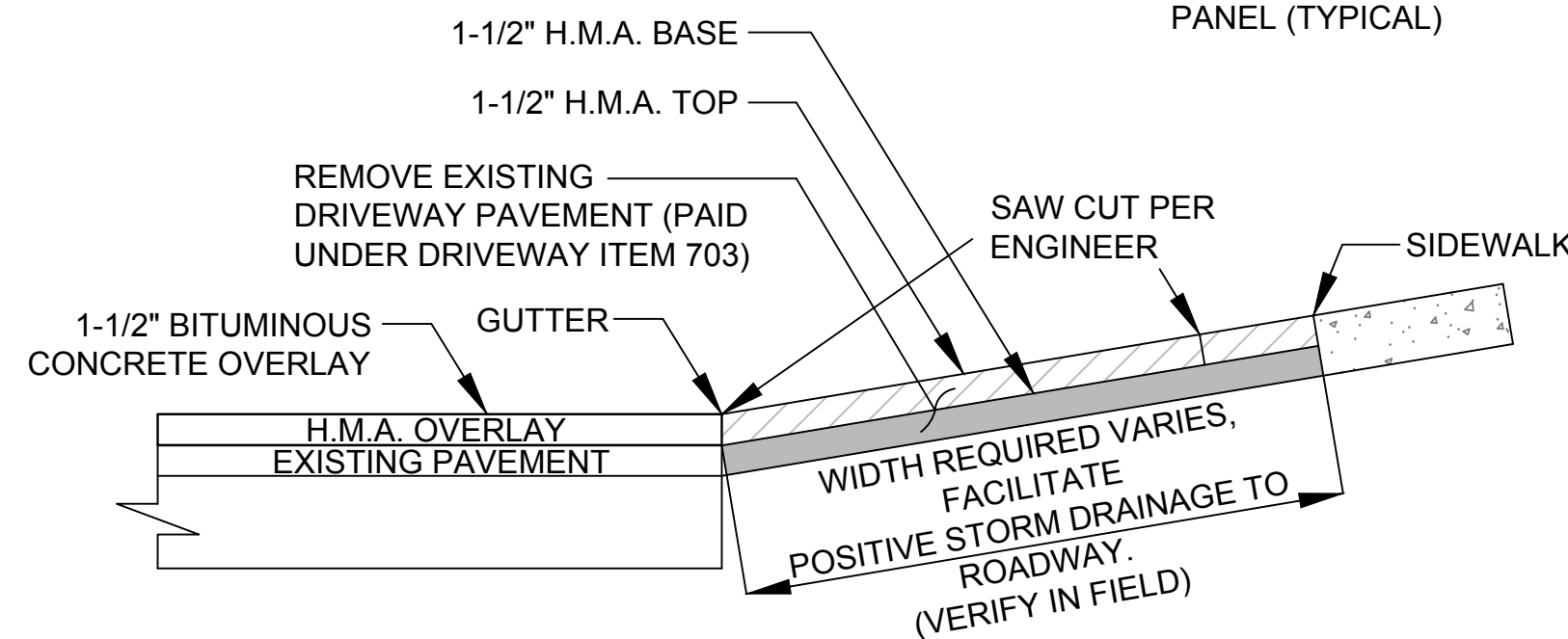
NOTE: ADJUSTMENT OF STRUCTURES TO LINE OR GRADE OR BOTH LINE AND GRADE WHEN THE CHANGE IS 6 INCHES OR LESS, WILL BE MEASURED IN PLACE BY THE UNIT EACH, COMPLETE AND APPROVED. NO ADDITIONAL COMPENSATION FOR ADJUSTMENT.



SIDEWALK RAMP
N.T.S.

NOTE:

SIDEWALK RAMPS TO HAVE 5'X5' MINIMUM LEVEL LANDING WITH 2% MAXIMUM CROSS SLOPE (ALL DIRECTIONS) WITH 2' X 4' YELLOW R304 TACTILE WARNING PANEL (TYPICAL)



BITUMINOUS CONCRETE DRIVEWAY
N.T.S.

**ENGINEERING DEPARTMENT
LONGMEADOW, MASSACHUSETTS**

WILLOW BROOK ROAD STORM DRAIN REHABILITATION DETAILS

SCALE: HOR. 1"=40' VERT. 1"=4'

DATE: July 2020

Willow Brook Road.dwg

DRAWN BY: C.M. CHECKED BY: T.K