

TOWN OF LONGMEADOW, MASSACHUSETTS

Plan of

2021 CONVERSE STREET SEWER REPLACEMENT PROJECT

SELECT BOARD

THOMAS LACHIUSA, CHAIR
MARC STRANGE, VICE CHAIR
STEVEN M. MARANTZ, CLERK
MARK P. GOLD, MEMBER
RICHARD FOSTER, MEMBER

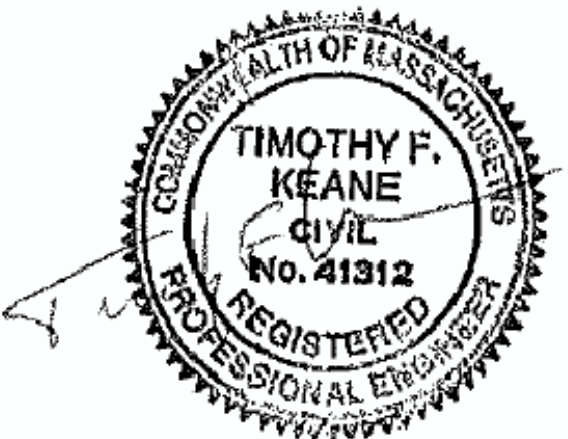
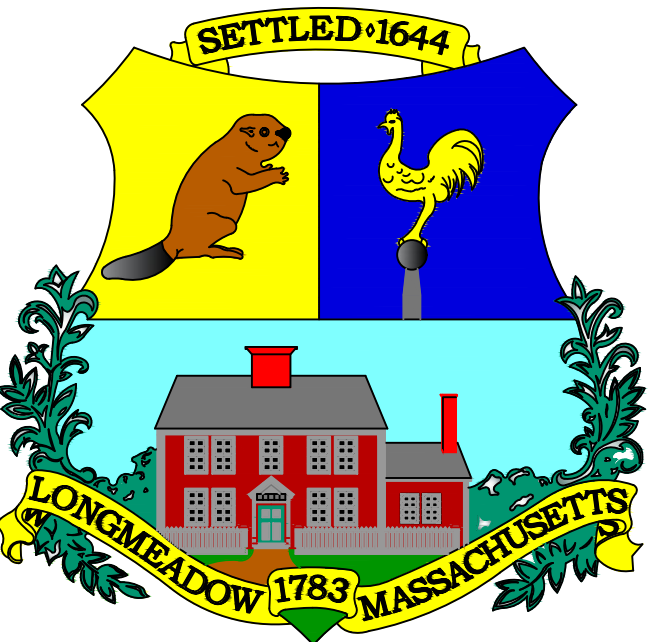
TOWN MANAGER

LYN N. SIMMONS

DEPARTMENT OF PUBLIC WORKS

JAY MOYNIHAN, INTERIM DIRECTOR
TIMOTHY KEANE, P.E., TOWN ENGINEER
CRAIG MARKHAM, ASSISTANT TOWN ENGINEER
PETER THURBER, DIRECTOR
WATER & WASTEWATER OPERATIONS

**Longmeadow
Engineering
Department**



LOCUS MAP
Not To Scale



INDEX

SHEET NUMBER	DESCRIPTION
1	COVER SHEET
2	GENERAL NOTES
3	CONSTRUCTION PLANS
4	DETAILS & SECTIONS SEWER
5	TRAFFIC CONTROL PLAN
6	TRAFFIC SIGNS & SIGN STANDS SCHEDULE

COMPLETE SET 6 SHEETS

GENERAL NOTES

1. EXISTING UTILITY LOCATIONS ARE BASED ON AVAILABLE INFORMATION. THE CONTRACTOR SHALL DETERMINE THE EXACT LOCATION OF UTILITIES BY TEST PIT OR OTHER METHOD WHERE REQUIRED. SECTIONS OF PROPOSED SEWER MAY NEED TO BE ADJUSTED BASED ON LOCATION AND DEPTH OF EXISTING UTILITIES.
2. THE CONTRACTOR SHALL REMOVE AND REPLACE FENCES, MAILBOXES, CURBING, ETC. AS NECESSARY, AND WITH THE ENGINEER’S APPROVAL. CONDITION OF REPLACED ITEMS SHALL BE EQUAL OR BETTER THAN ORIGINAL CONDITION PRIOR TO REMOVAL.
3. THE CONTRACTOR SHALL TAKE NECESSARY PRECAUTIONS TO MAINTAIN EXISTING WATER, SEWER, AND GAS SERVICES TO RESIDENTS ALONG THE PROJECT ROUTE. DAMAGED SERVICES SHALL BE REPAIRED IMMEDIATELY AT NO ADDITIONAL COST TO THE OWNER.
4. STORM AND SANITARY BY-PASS PUMPING, IF REQUIRED, SHALL BE PROVIDED BY THE CONTRACTOR, AND INCLUDED IN APPROPRIATE BID ITEMS.
5. ALL TEST PIT WORK MUST BE COMPLETED PRIOR TO COMMENCING SEWER CONSTRUCTION WORK BY THE CONTRACTOR. THE ENGINEER SHALL USE TEST PIT INFORMATION FOR DIRECTING THE CONTRACTOR, IN THE EVENT OF A PROPOSED CONFLICT WITH THE ACTUAL EXISTING UTILITY LOCATIONS AND/OR ELEVATIONS.
6. ADJUSTMENTS TO THE PROPOSED SEWER LAYOUT AND ELEVATIONS SHALL NOT BE CONSIDERED AS CAUSE FOR ADDITIONAL PAYMENTS. THE CONTRACTOR SHALL NOT MAKE PROPOSED SEWER LAYOUT AND ELEVATION ADJUSTMENTS WITHOUT THE WRITTEN APPROVAL FROM THE ENGINEER.
7. DIVERSION AND CONTROL OF SANITARY AND STORM FLOWS IN THE EXISTING SEWER AND DRAINS ARE THE RESPONSIBILITY OF THE CONTRACTOR. THE CONTRACTOR’S INTENDED METHODS FOR DIVERSION AND CONTROL DEWATERING SHALL BE SUBMITTED TO THE ENGINEER FOR REVIEW.
8. ASBESTOS CEMENT PIPE TO BE REMOVED AS A RESULT OF THIS PROJECT SHALL BE HANDLED, TRANSPORTED AND DISPOSED OF IN ACCORDANCE WITH APPLICABLE ASBESTOS ABATEMENT PROCEDURES AND MASSACHUSETTS REGULATIONS. COST SHALL BE INCLUDED IN APPROPRIATE BID ITEMS.
9. PROVIDE TEMPORARY WATER & SEWER SERVICES AS NEEDED TO MAINTAIN WATER & SEWER SERVICE TO HOMES IN WORK AREA DURING CONSTRUCTION.
10. PLANIMETRIC AND TOPOGRAPHIC FEATURES SHOWN ON THESE PLANS ARE BASED ON AVAILABLE MAPPING, MASSGIS, GOOGLE EARTH, UTILITY CONNECTION CARDS, LAND SURVEY, AND FIELD MEASUREMENTS, AND ARE INTENDED TO BE FOR REFERENCE ONLY.
11. THE PROPERTY AND STREET LINES DEPICTED HAVE BEEN COMPILED FROM VARIOUS SOURCES AND ARE NOT TO BE CONSTRUED AS BEING OBTAINED AS A RESULT OF A FIELD SURVEY, NOR DO THEY REPRESENT A PROPERTY/BOUNDARY OPINION.
12. ELEVATIONS ARE BASED ON THE BENCHMARK SHOWN ON THE PLANS AND THE VERTICAL DATUM IS ASSUMED.
13. THE CONTRACTOR SHALL DETERMINE, PRIOR TO BIDDING, THE LOCATION AND ELEVATIONS OF ALL UTILITIES THAT MAY AFFECT THE CONSTRUCTION OPERATIONS. THE CONTRACTOR SHALL ADEQUATELY SUPPORT AND PROTECT ALL UTILITIES AND BE RESPONSIBLE FOR ALL DAMAGE. CALL DIGSAFE AT LEAST 72 HOURS PRIOR TO STARTING CONSTRUCTION AND COMPLY WITH 22 CMR 99.00.
14. CONTRACTOR SHALL COORDINATE ACTIVITIES WITH INDIVIDUAL UTILITY COMPANIES.
15. THE CONTRACTOR SHALL NOTIFY THE ENGINEER SHOULD THERE BE ANY POTENTIAL CONFLICTS BETWEEN EXISTING UTILITIES AND PROPOSED CONSTRUCTION PRIOR TO CONSTRUCTION.
16. ALL DIMENSIONS, ELEVATIONS AND EXISTING CONDITIONS SHALL BE FIELD VERIFIED BY THE CONTRACTOR PRIOR TO CONSTRUCTION ANY DISCREPANCIES SHALL BE REPORTED TO THE ENGINEER.
17. CONTRACTOR IS RESPONSIBLE TO ENSURE THAT PROPER STORM DRAINAGE AND SANITARY SEWER FLOW IS MAINTAINED THROUGHOUT CONSTRUCTION.
18. WITHIN THE PROJECT LIMITS, ALL AREAS AND FACILITIES DISTURBED DURING PROJECT CONSTRUCTION, INCLUDING, BUT NOT LIMITED TO, ALL SHRUBS, TREES, MAIL BOXES, LIGHT POLES, FENCES, WALLS, PAINTED STEEL HANDRAIL PIPE, ALL SIGNS WHICH WERE REMOVED, OR ANY AND ALL OTHER PROPERTY REMOVED OR HARMED IN ANY WAY BY WORK DONE UNDER THIS CONTRACT, SHALL BE RESTORED TO A CONDITION EQUAL TO OR BETTER THAN ORIGINAL.
19. ON PUBLIC OR PRIVATE PROPERTIES, BEYOND THE PROJECT LIMITS, ITEMS SUCH AS MAIL BOXES, LIGHT POLES, SIDEWALKS, SHRUBS, FENCES, SIGNS, ETC. DAMAGED OR DISTURBED BY THE CONTRACTOR SHALL BE REPAIRED OR REPLACED AT THE CONTRACTOR’S EXPENSE, AS DIRECTED BY THE ENGINEER.
20. THE CONTRACTOR SHALL REPLACE ALL BOUNDS (STREET LINE MONUMENTS AND PROPERTY MARKERS) DISTURBED AS A RESULT OF HIS OPERATIONS AND AT HIS OWN EXPENSE. SAID BOUNDS SHALL AGAIN BE ESTABLISHED BY A LAND SURVEYOR LICENSED IN THE STATE OF MASSACHUSETTS. VERIFICATION SHALL BE PROVIDED TO THE ENGINEER.
21. ALL EROSION CONTROL MEASURES SHALL BE IN PLACE PRIOR TO COMMENCING ANY CONSTRUCTION AND SHALL BE MAINTAINED IN PROPER WORKING ORDER UNTIL ALL DISTURBED AREAS ARE STABILIZED AND GROUND COVER IS ESTABLISHED.
22. WATER GATE VALVES, HYDRANTS, MANHOLES, AND CATCH BASINS WITHIN THE PROJECT LIMITS THAT NEED TO BE RESET DUE TO THE PROPOSED CONSTRUCTION SHALL BE RESET BY THE CONTRACTOR TO BE FLUSH WITH THE PROPOSED GRADE. GAS GATE VALVES, UTILITY MANHOLES AND UTILITY POLES SHALL BE RESET BY THE OWNER OF THAT UTILITY. AS COORDINATED BY THE CONTRACTOR.
23. ANY DAMAGES TO STORM DRAIN LINES WILL BE REPAIRED BY THE CONTRACTOR AT THE CONTRACTORS EXPENSE.
24. CONTRACTOR SHALL OBTAIN ALL NECESSARY PERMITS, APPROVALS AND AUTHORIZATIONS TO COMPLETE THE WORK INCLUDING, BUT NOT LIMITED TO, ROAD OPENING AND TRENCH PERMIT FROM THE TOWN OF LONGMEADOW DEPARTMENT OF PUBLIC WORKS.

ABBREVIATIONS

ASBESTOS CEMENT
BITUMINOUS CONCRETE
BOTTOM OF EXPLORATION
CAST IRON
CATCH BASIN
CHAIN LINK FENCE
CHIMNEY
CEMENT LINED STEEL
CLEANOUT
CONCRETE
CONCRETE WALK
COPPER
CORRUGATED METAL PIPE
CUT SPIKE
DEBRIS
DIRT PILE
DRAIN MANHOLE
DUCTILE IRON
EASEMENT LINE ELEVATION
EDGE OF PAVEMENT
EROSION CONTROL
GAS GATE
GATE VALVE
GEOGRAPHICAL INFORMATION SYSTEMS
GRANITE CURB
GUY WIRE
GUY POLE
HOUSE
HYDRANT
INVERT
IRON PIPE
LIGHT HOLE (SEWER SERVICE 'T')
MAIL BOX
MANHOLE
MECHANICAL JOINT
NOT IN THIS CONTRACT
NOT TO SCALE
PAVED WALK
POLYETHYLENE PIPE
POLY-VINYL CHLORIDE
PROPERTY LINE

AC
BIT CONC
BOE
CI
CB
C/L FEN
CHIM
CL
CO
CONC
C
CU
CMP
CS
DB
DP
DMH
DI
EL
EOP
EC
GG
GV
GIS
GR CURB
GY
GP
HSE
HYD
INV
IP
L.H.
MB
MH
MJ
NITC
NTS
PW
PE
PVC
PL

PUMP STATION
REINFORCED CONCRETE PIPE
RIGHT OF WAY
ROCK PILE
SANITARY MANHOLE
STANDARD DIMENSION RATIO
STATION
STONE BOUND
STREET LINE
SHUT OFF CURB STOP
TEMPORARY BENCH MARK
TELEPHONE POLE
TRAFFIC CONTROL
UNDER CONSTRUCTION
UTILITY POLE
UTILITY STRUCTURE
UNDELINEATED WETLAND AREA
VITRIFIED CLAY PIPE
WATER GATE
WATER SERVICE
WATER TIGHT COVER

P.S.
RCP
R.O.W.
RP
SMH
SDR
STA
SB
SL
SO
TBM
TP
TC
UC
U.P.
UT
UWA
VC
WG
WS
WTC

BORING B-6

Client: Town of Longmeadow, MA			SEABOARD DRILLING, INC.			Test Boring/ Monitor Well ID: B-6		
Location: Corner Laurel / Converse			P.O. BOX 3026 SPFLD, MA 01101					
Project: Longmeadow, MA			DRILLING/SOIL LOG			Sheet No. 1 of 1		
Contractor: Seaboard Drilling, Inc.			Hammer (Weight-lb./fall-30")			Start: 3/30/2013		
Type	Casing	SS	N/A	140/30 300/24		Finish: 3/30/2013		
O.D. Inch	8-1/2"			Rig Type: B-53		Driller: Jeff Nitsch		
I.D. Inch	4-1/4"							
Depth (ft.) Range	Blows	Sample No.	Recovery	FIELD CLASSIFICATIONS AND REMARKS				
1-3'	10-12-13-10	S-1	16"	Dry Brown Fine SAND, Little Coarse SAND.				
5-7'	3-3-3-3	S-2	18"	Dry Brown Fine SAND, Little Coarse SAND.				
10-12'	3-3-5-7	S-3	22"	Water Table @ 9.0'. Wet Brown Fine SAND, Trace Medium SAND.				
				END OF BORING @ 12.0'.				

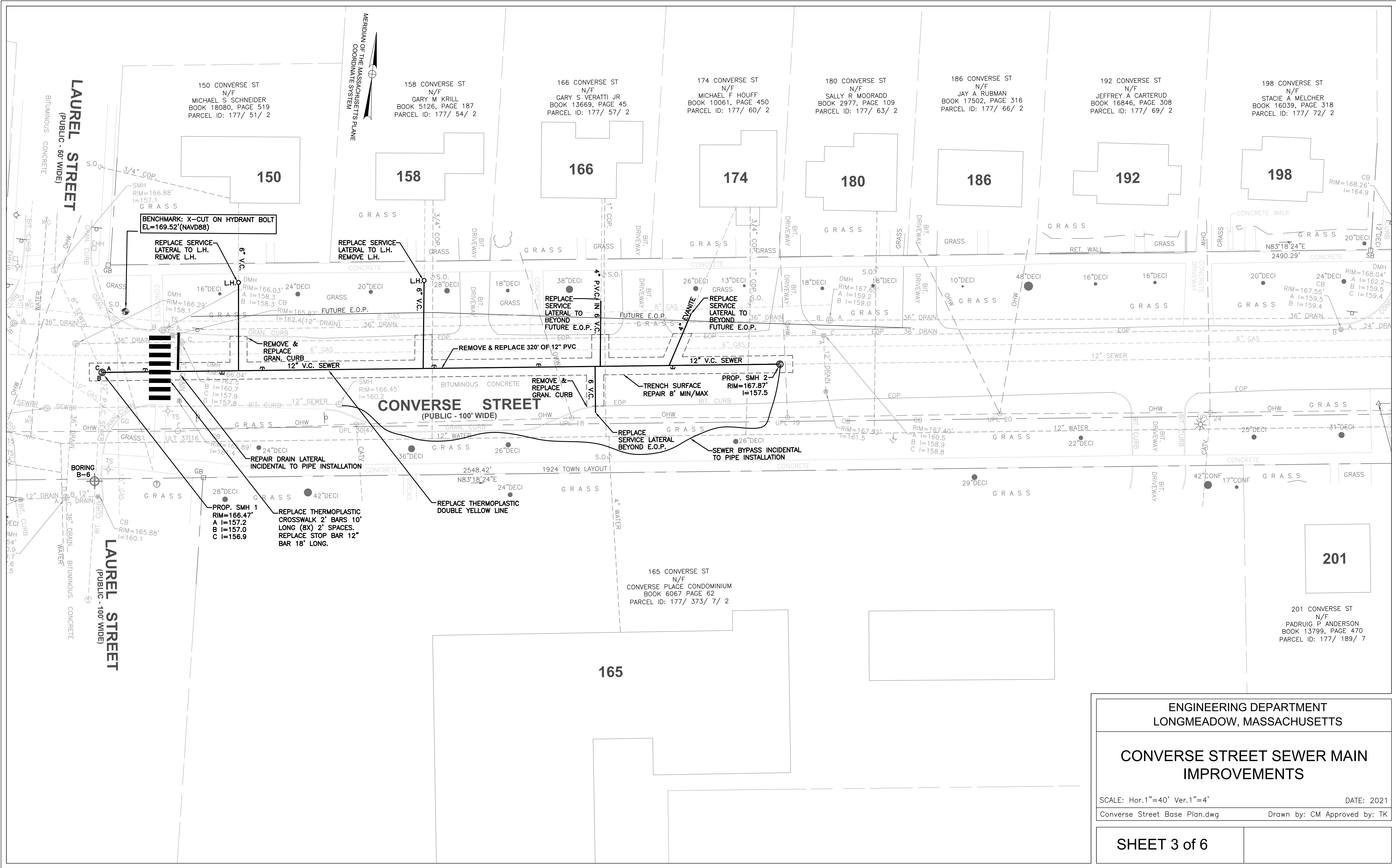
ENGINEERING DEPARTMENT
LONGMEADOW, MASSACHUSETTS

GENERAL NOTES
CONVERSE STREET SEWER MAIN
IMPROVEMENTS

SCALE: N.T.S. DATE: 2021
Converse Street Base Plan.dwg

SHEET 2 of 6

DRAWN BY: C.M. CHECKED BY: T.K.



ENGINEERING DEPARTMENT
LONGMEADOW, MASSACHUSETTS

CONVERSE STREET SEWER MAIN
IMPROVEMENTS

SCALE: Hor.1"=40' Ver.1"=4'
Converse Street Base Plan.dwg

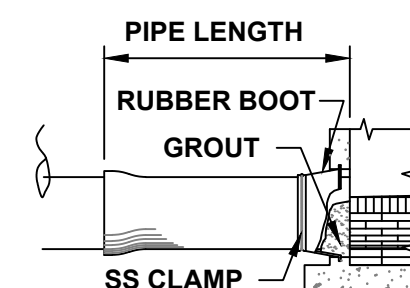
DATE: 2021
Drawn by: CM Approved by: TK



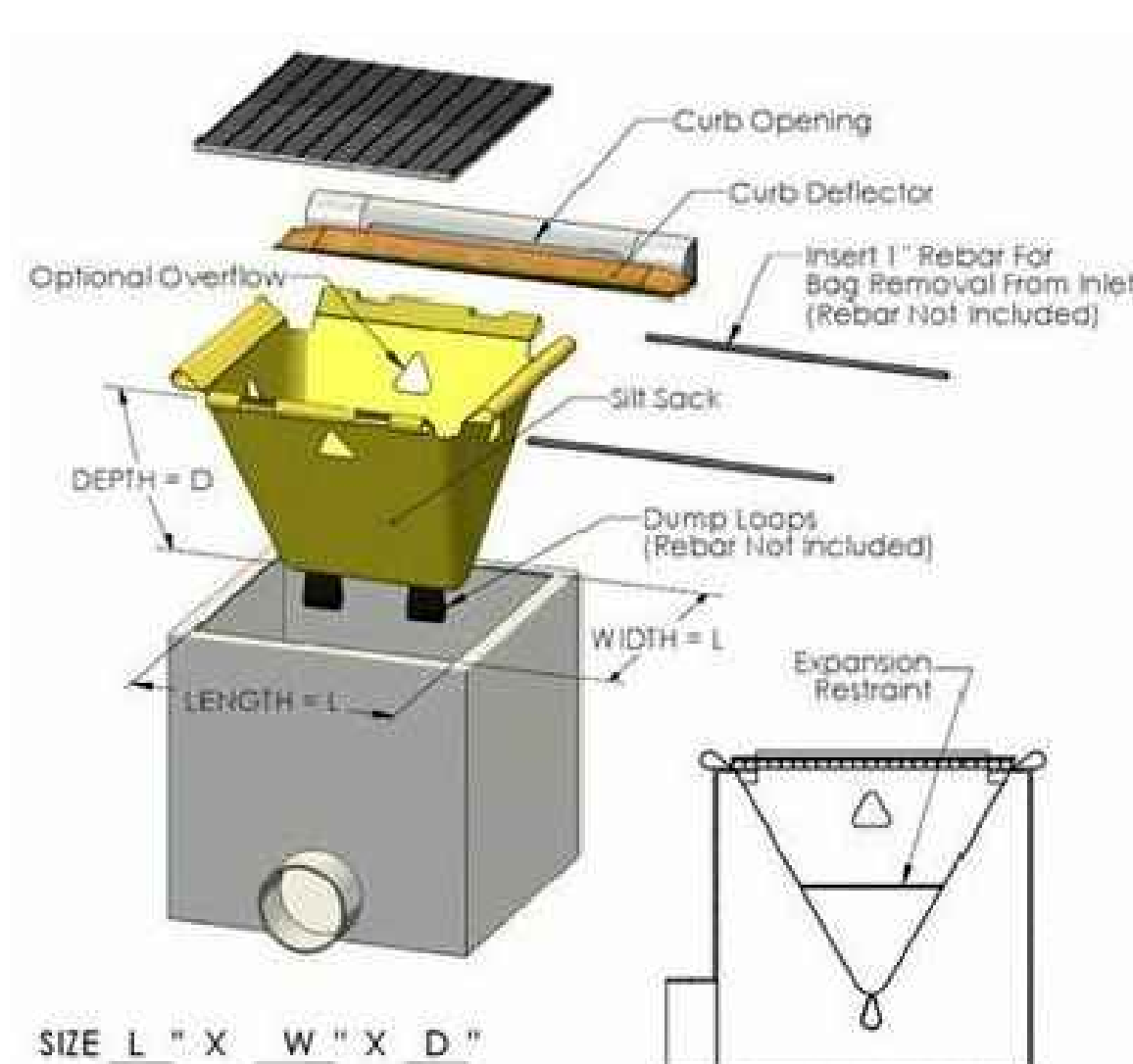
NOTES:

1. INCLUDES TEMPORARY PAVEMENT PATCHES FOR SIDEWALKS AND DRIVEWAYS.
2. INCLUDES PERMANENT REPAIRS FOR DRIVEWAYS, SIDEWALKS, LAWN AREAS (LOAM & SEED), BERM, AND CURBS.
3. THE PAYLINE DIMENSIONS SHOWN REPRESENT THE MINIMUM & MAXIMUM PAYLINE LIMITS TO BE PAID. WHEN THE ACTUAL SURFACE REPAIR OR TRENCH WIDTH IS MORE, THE 8' WIDTH SHALL BE PAID FOR AT THE APPLICABLE UNIT PRICE.

TRENCH EXCAVATION AND SURFACE REPAIR PAYLINES



48" PRECAST SANITARY SEWER MANHOLE
NOT TO SCALE

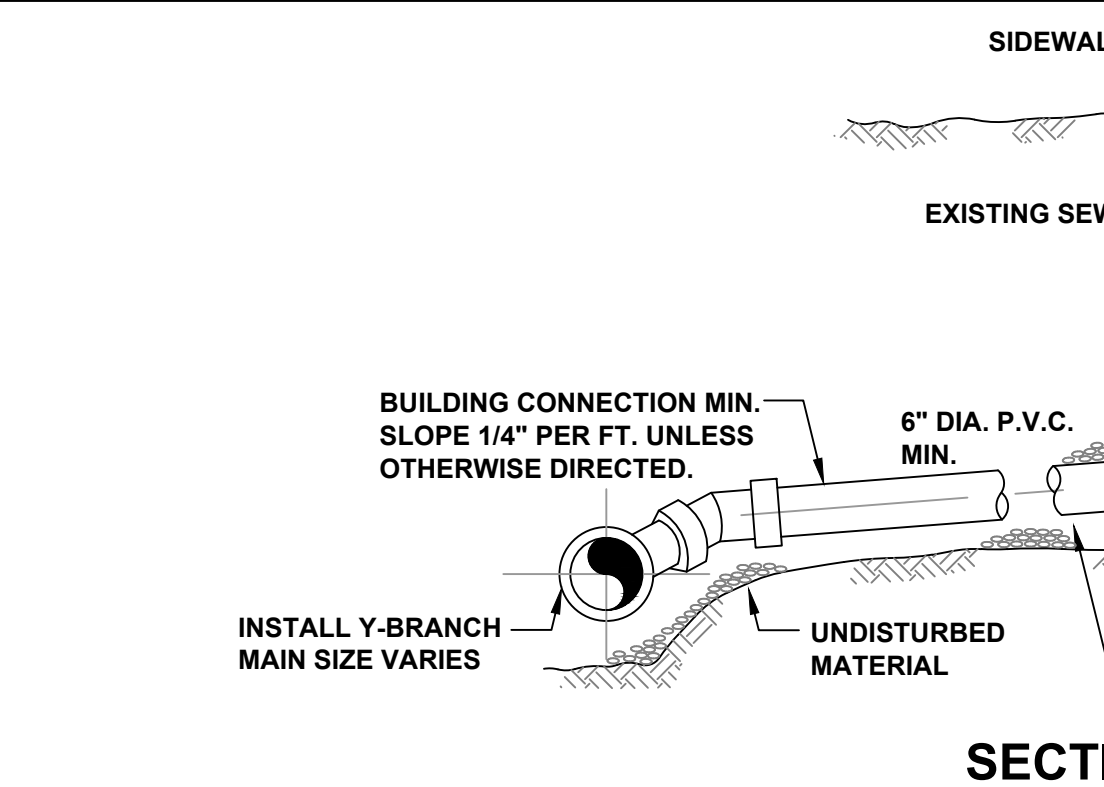


CATCH BASIN SILT SACK DETAIL
NOT TO SCALE

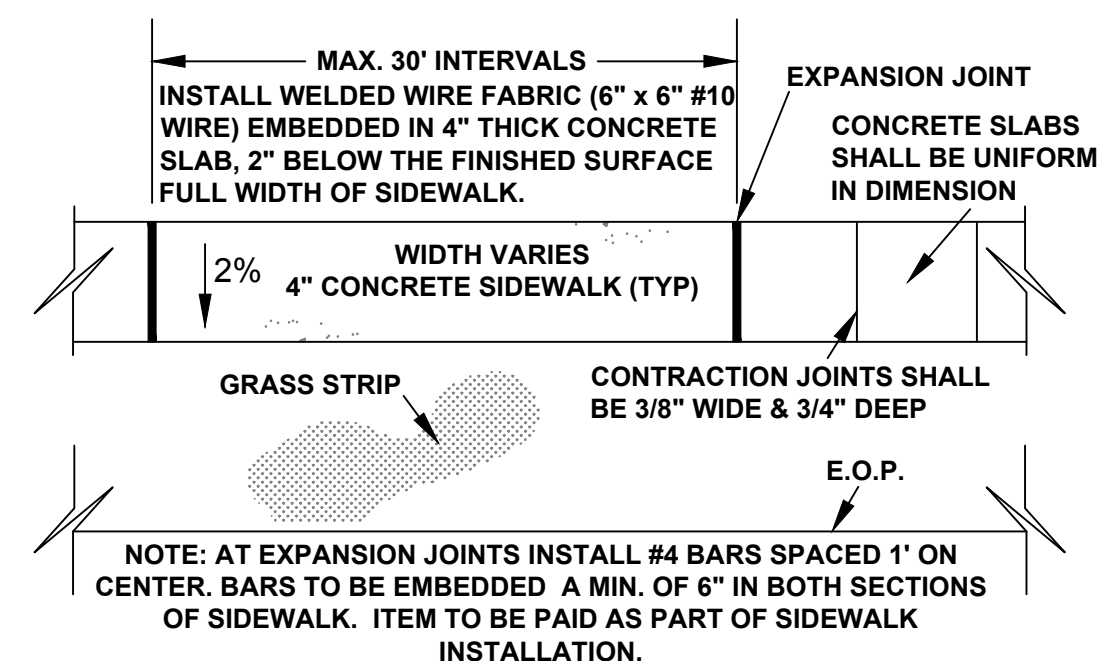


NOTES:

1. FRAME AND COVER SHALL BE PROVIDED FROM THE SAME MANUFACTURER.
2. LETTERING SHALL BE CAST INTO COVERS AS SPECIFIED.



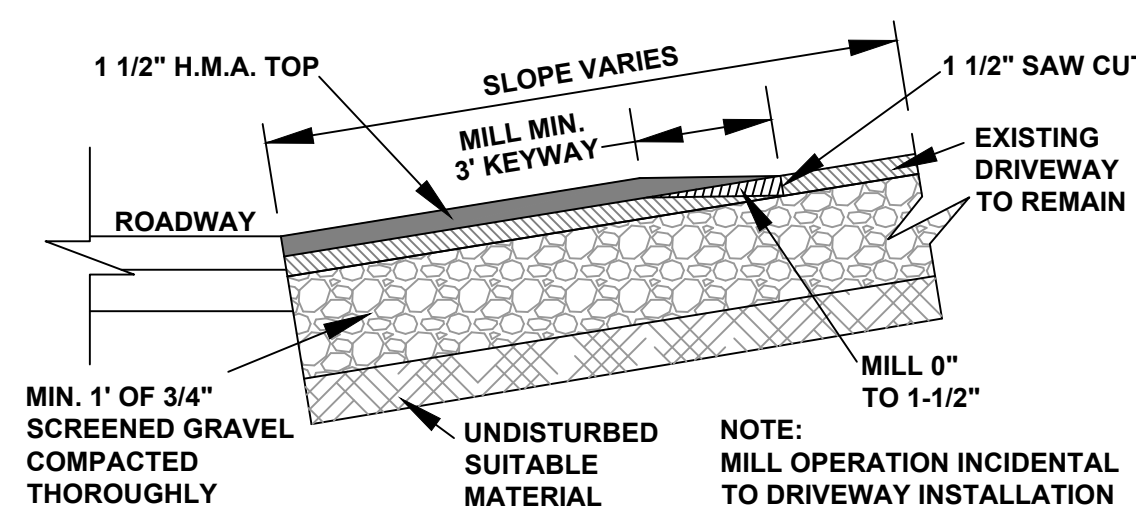
SECTION



4" MIN CONCRETE SIDEWALK, THE CONCRETE MIX IS TO CONFORM TO THE FOLLOWING SPECIFICATIONS AS SET FORTH BY THE MASSACHUSETTS DEPARTMENT OF PUBLIC WORKS IN THEIR STANDARD SPECIFICATIONS FOR HIGHWAYS AND BRIDGES, 1988 EDITION AS AMENDED. CEMENT CONCRETE (AIR ENTRAINED 4000 PSI. ¾", 610) M4.02.00

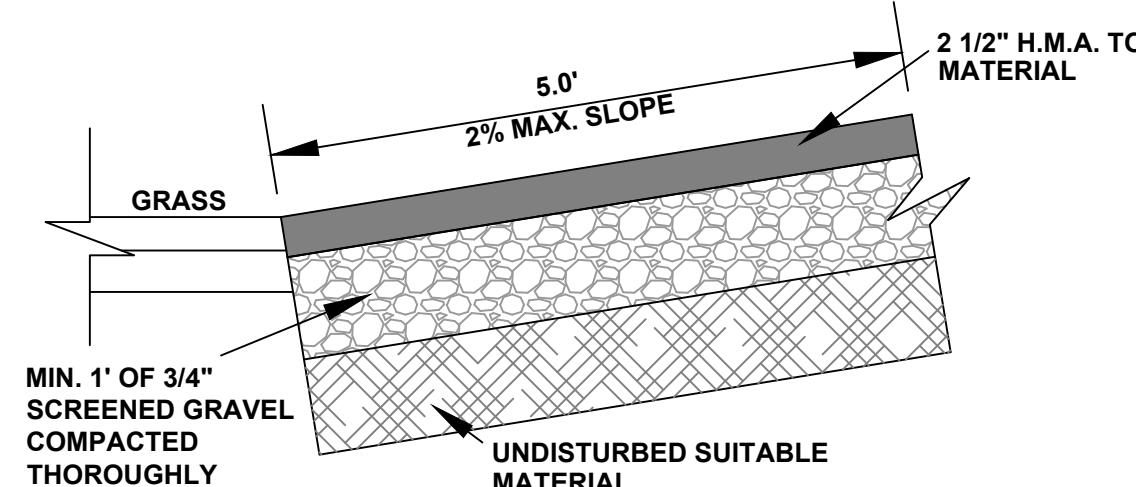
CONCRETE SIDEWALK DETAIL PLAN VIEW

(SCALE: N.T.S.)

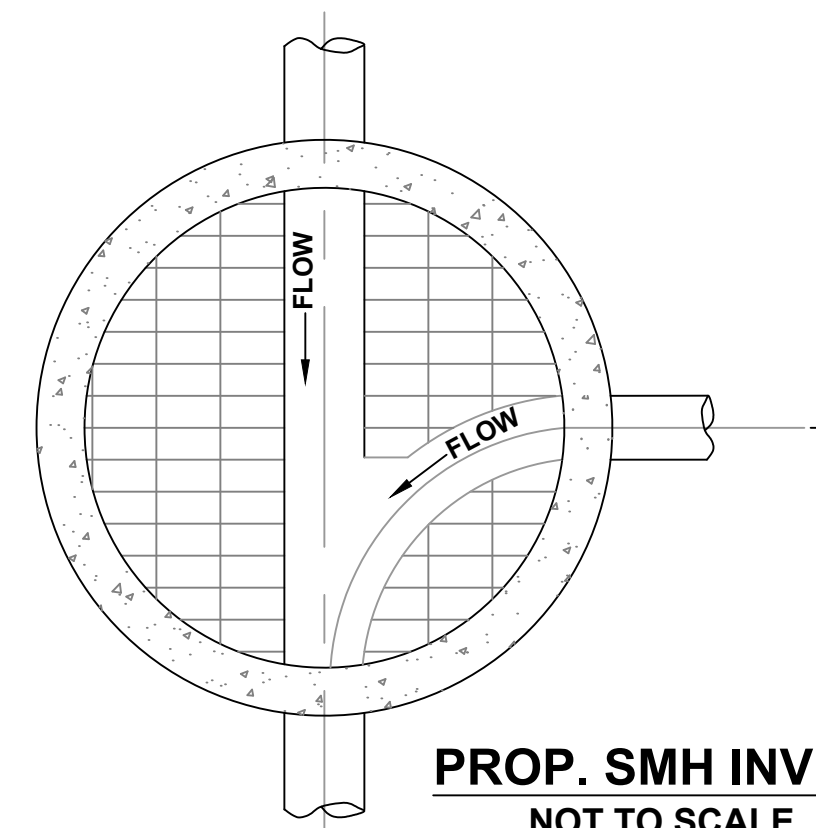


HOT MIX ASPHALT DRIVEWAY DETAIL

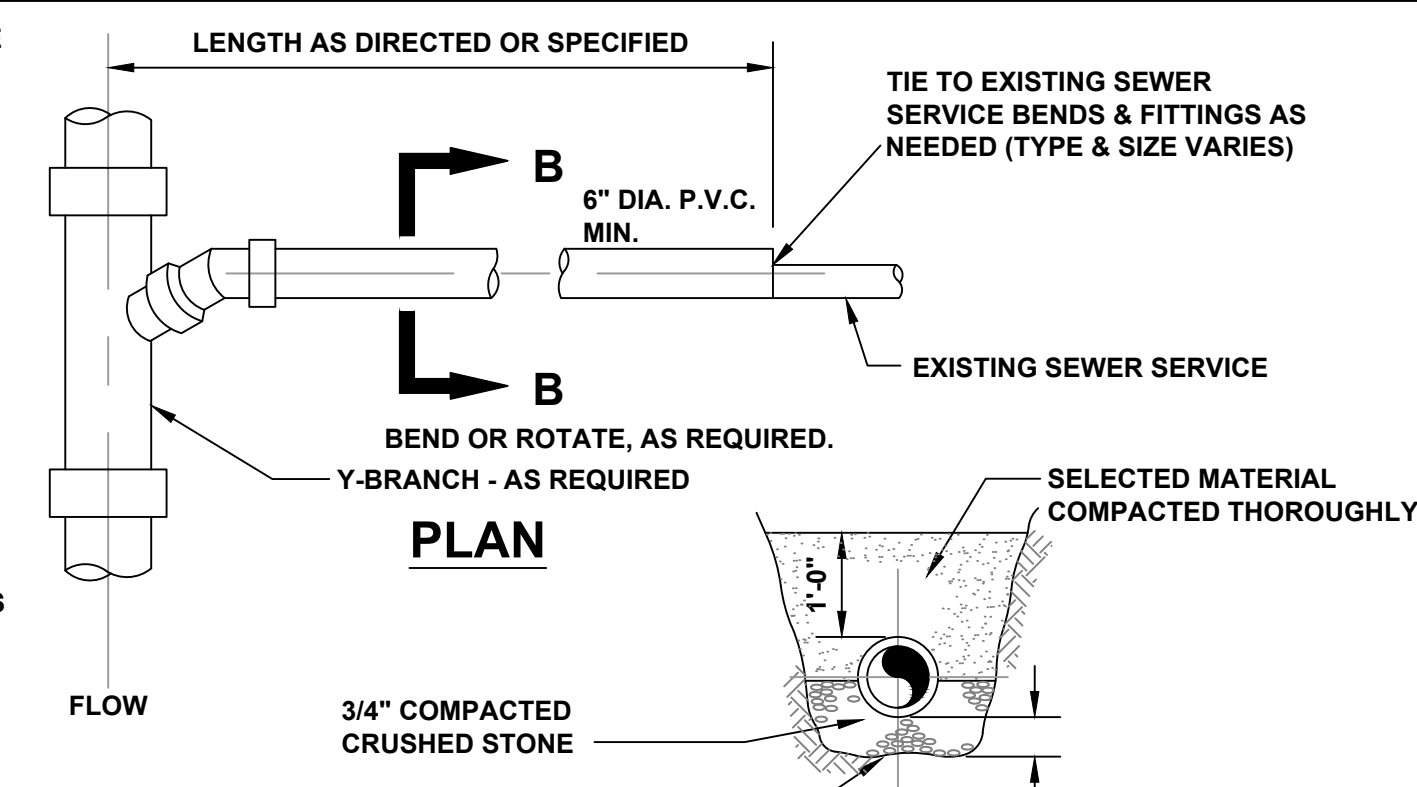
NOT TO SCALE



HOT MIX ASPHALT SIDEWALK DETAIL
NOT TO SCALE



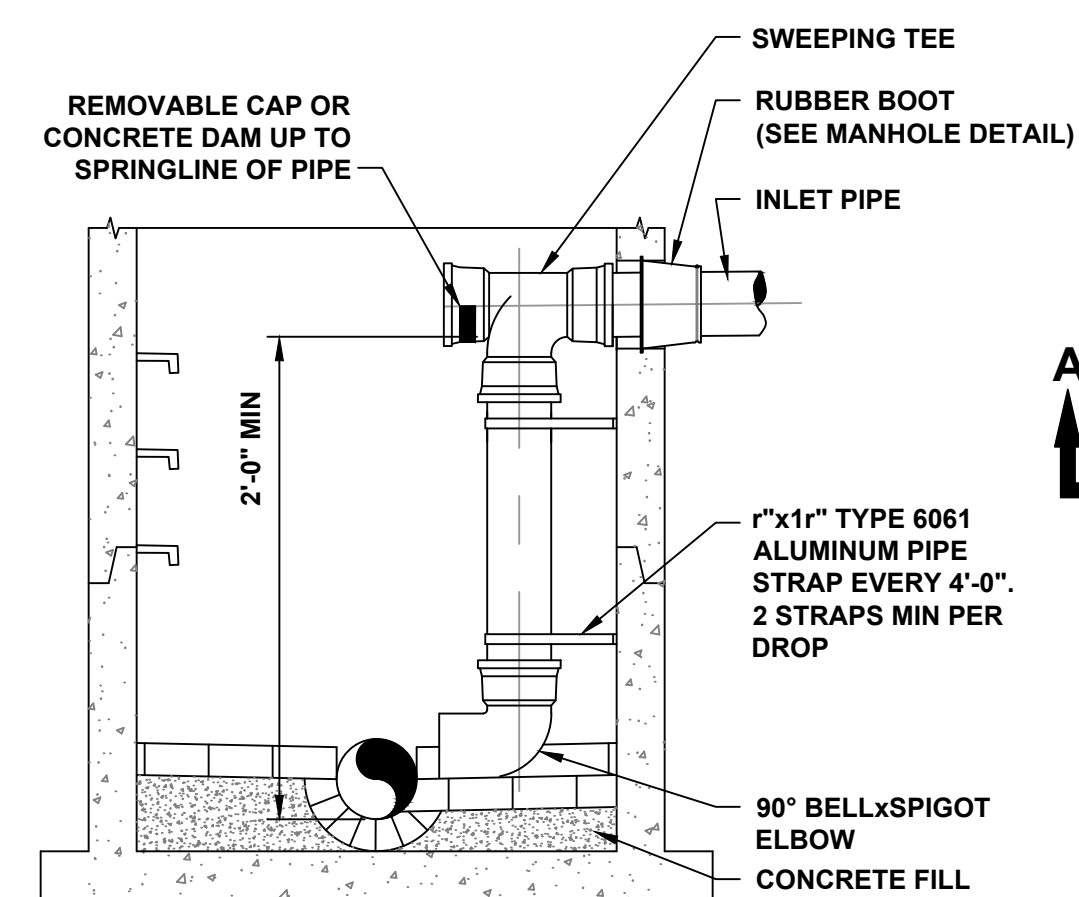
PROP. SMH INVERT
NOT TO SCALE



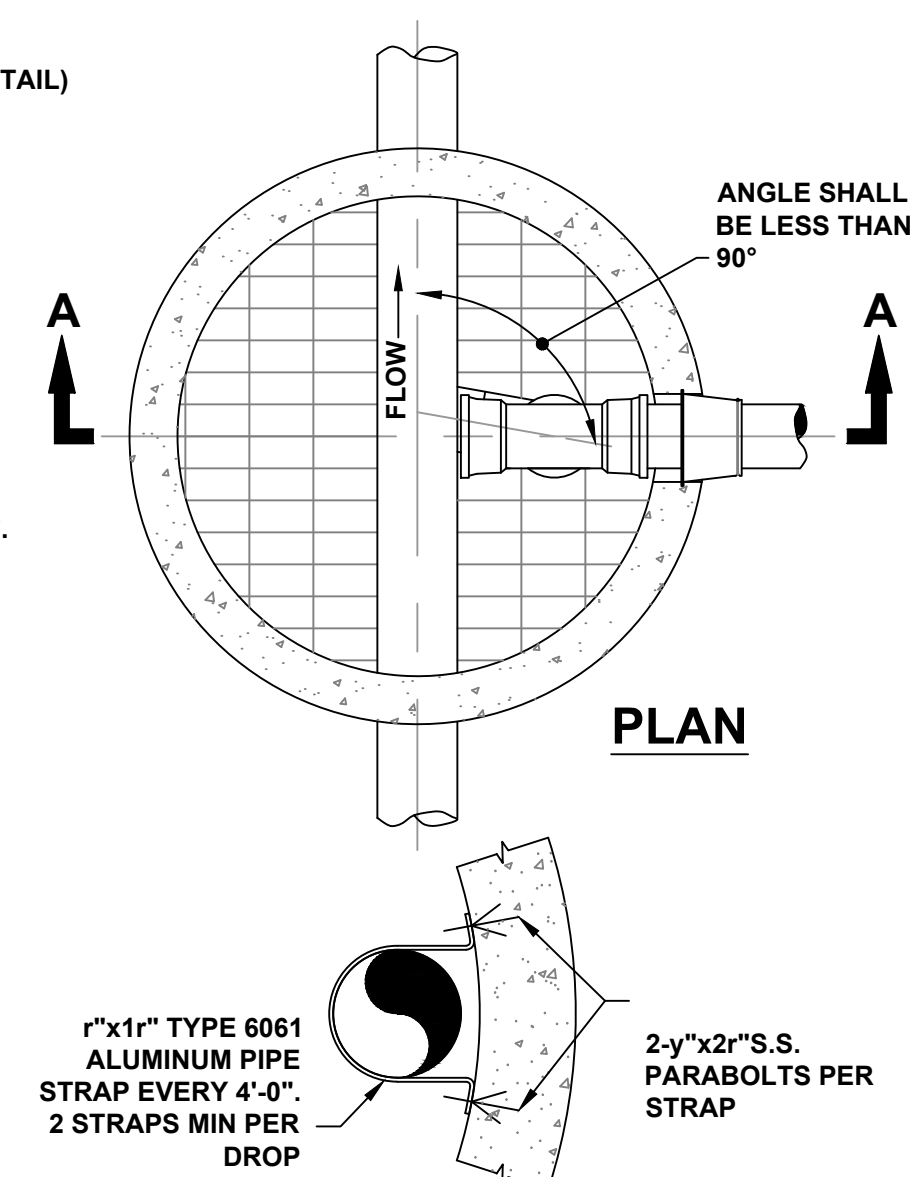
SECTION B-B



NOT TO SCALE



SECTION A-A



PLAN

PIPE STRAP DETAIL

- NOTES:**
- 1. RISER PIPE AND FITTINGS SHALL BE THE SAME DIAMETER AS THE INLET PIPE AND SHALL BE CONSTRUCTED OF SDR35 PVC PIPE**
 - 2. INTERIOR MANHOLE CHIMNEYS SHALL ONLY BE INSTALLED IN 60" DIAMETER OR LARGER MANHOLE. SEE MANHOLE DETAIL FOR FURTHER INFORMATION.**
 - 3. INTERIOR CHIMNEY TO BE USED FOR PIPES LESS THAN 12" IN DIAMETER.**

INTERIOR MANHOLE CHIMNEY
NOT TO SCALE

ENGINEERING DEPARTMENT
LONGMEADOW, MASSACHUSETTS

MISCELLANEOUS SEWER DETAILS

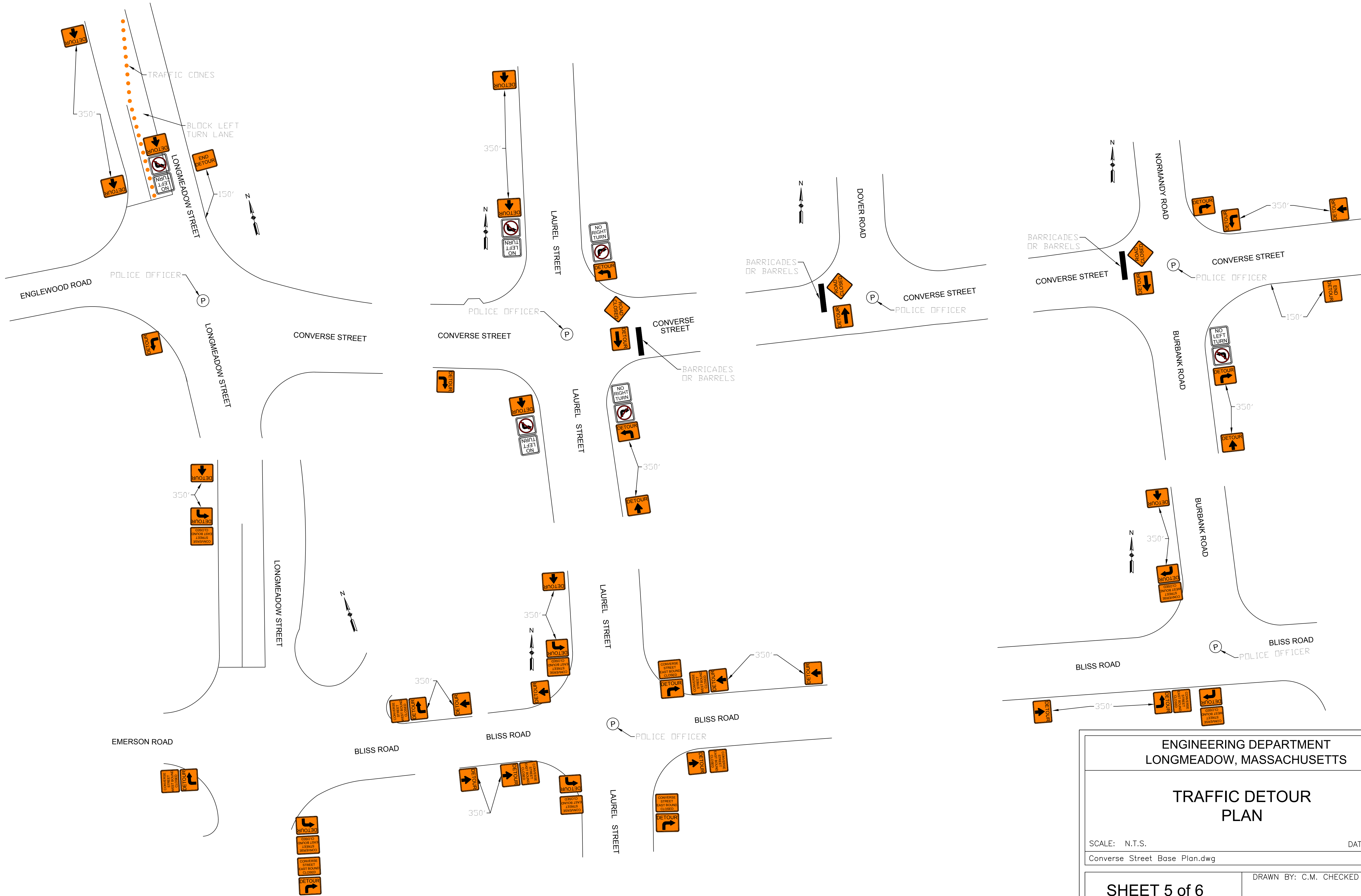
SCALE: N.T.S.

DATE: 2021

Converse Street Base Plan.dwg














DRAWN BY: C.M. CHECKED BY: T.K.

SHEET 4 of 6

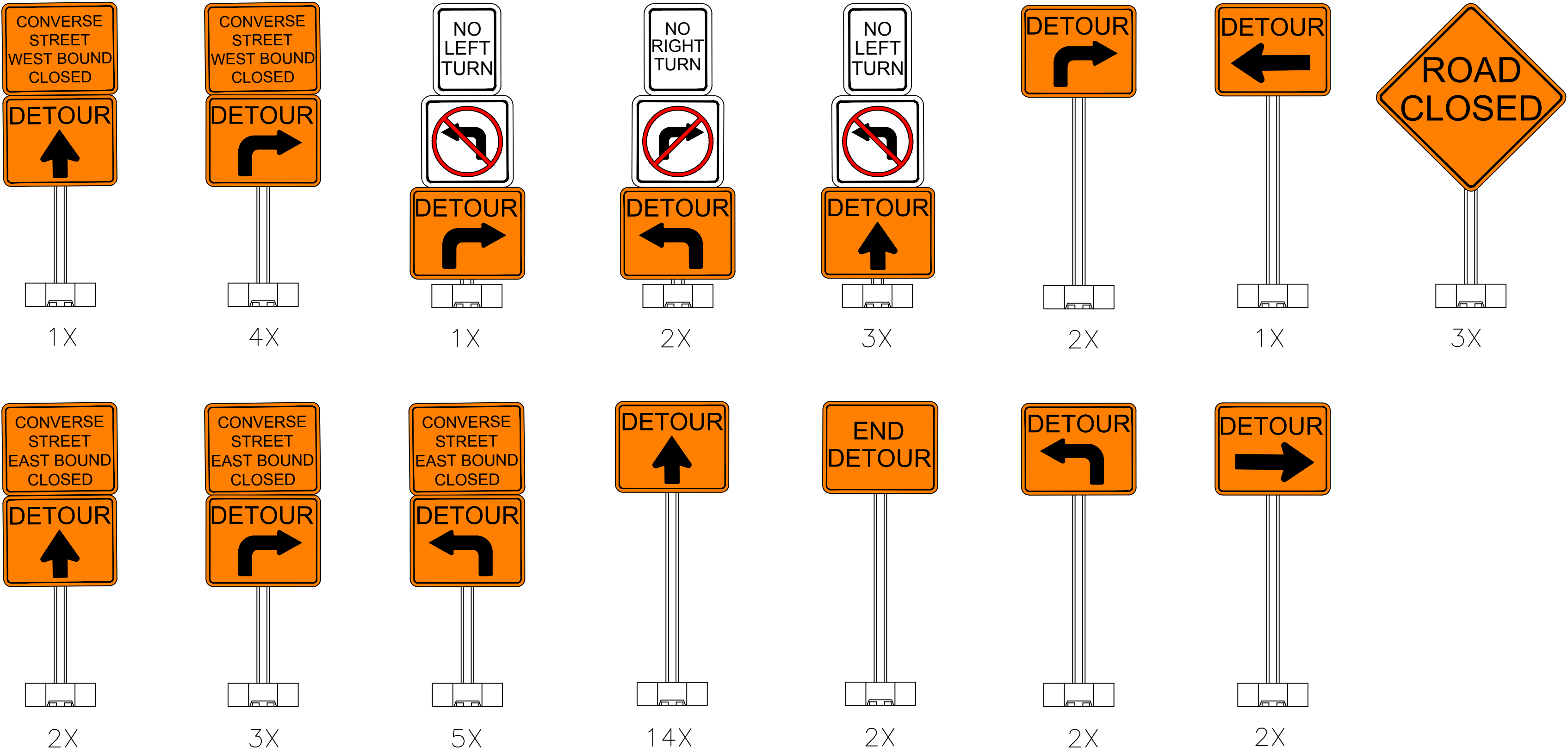


ENGINEERING DEPARTMENT LONGMEADOW, MASSACHUSETTS	
TRAFFIC DETOUR PLAN	
SCALE: N.T.S.	DATE: 2021
Converse Street Base Plan.dwg	
SHEET 5 of 6	DRAWN BY: C.M. CHECKED BY: T.K.

SIGN SCHEDULE (TOTAL SIGNS REQUIRED 74)

IDENTIFI- CATION NUMBER	SIZE OF SIGN		TEXT	QUANTITY	MATERIAL
	WIDTH (IN)	HEIGHT (IN)			
X-M4-9L	30	24		1	.080" Fluorescent Diamond Grade Work Zone Reflective Aluminum
X-M4-9R	30	24		2	.080" Fluorescent Diamond Grade Work Zone Reflective Aluminum
DETOUR RIGHT TURN SIGN	30	24		10	.080" Fluorescent Diamond Grade Work Zone Reflective Aluminum
DETOUR LEFT TURN SIGN	30	24		9	.080" Fluorescent Diamond Grade Work Zone Reflective Aluminum
DETOUR SIGN UP ARROW	30	24		20	.080" Fluorescent Diamond Grade Work Zone Reflective Aluminum
M4-8a	30	24		2	.080" Fluorescent Diamond Grade Work Zone Reflective Aluminum
CUSTOM 1	30	24		10	.080" Fluorescent Diamond Grade Work Zone Reflective Aluminum
CUSTOM 2	30	24		5	.080" Fluorescent Diamond Grade Work Zone Reflective Aluminum
K2-1581	36	36		3	.080" Fluorescent Diamond Grade Work Zone Reflective Aluminum
R3-1	24	24		2	.080" Engineering Grade Reflective Aluminum
R3-2	24	24		4	.080" Engineering Grade Reflective Aluminum
NO RIGHT TURN	18	24		2	.080" Engineering Grade Reflective Aluminum
NO LEFT TURN	18	24		4	.080" Engineering Grade Reflective Aluminum

SIGN STAND SCHEDULE (TOTAL SIGNS STANDS REQUIRED 47)



- NOTES:
1. PORTABLE SIGN STANDS TO BE 60LB RECYCLED RUBBER OCTAGON BASE WITH WHEELS & 6' GREEN U-CHANNEL POSTS. BASE SIZE 6"x18"x18" (TOTAL NUMBER OF SIGN STANDS REQUIRED 47)
 2. SIGN & SIGN STANDS TO BE MOVED OR TURNED TO INDICATE WHEN DETOUR IS IN PLACE EACH DAY OF CONSTRUCTION. AT THE END OF EACH DAY OF CONSTRUCTION ALL STANDS TO BE MOVED OR TURNED SO SIGNS ARE NOT VISIBLE TO TRAFFIC.
 3. ALL SIGNS AND SIGN STANDS TO BECOME PROPERTY OF THE TOWN OF LONGMEADOW AT THE END OF CONSTRUCTION & DELIVERED TO THE TOWN OF LONGMEADOW DEPARTMENT OF PUBLIC WORKS YARD. SIGNS OR SIGN STANDS DAMAGED DURING CONSTRUCTION TO BE REPLACED AT CONTRACTORS EXPENSE.
 4. SIGN & SIGN STANDS DELIVERED TO THE TOWN OF LONGMEADOW & ALL MOVEMENT OF SIGNS & SIGN STANDS DURING CONSTRUCTION SHALL BE PAID FOR UNDER THE LUMP SUM UNIT PRICE TRAFFIC CONTROL (ITEM #852)

ENGINEERING DEPARTMENT
LONGMEADOW, MASSACHUSETTS

TRAFFIC SIGNS & SIGN
STANDS SCHEDULE

SCALE: N.T.S. DATE: 2021
Converse Street Base Plan.dwg