

TOWN OF LONGMEADOW, MASSACHUSETTS

Plan of

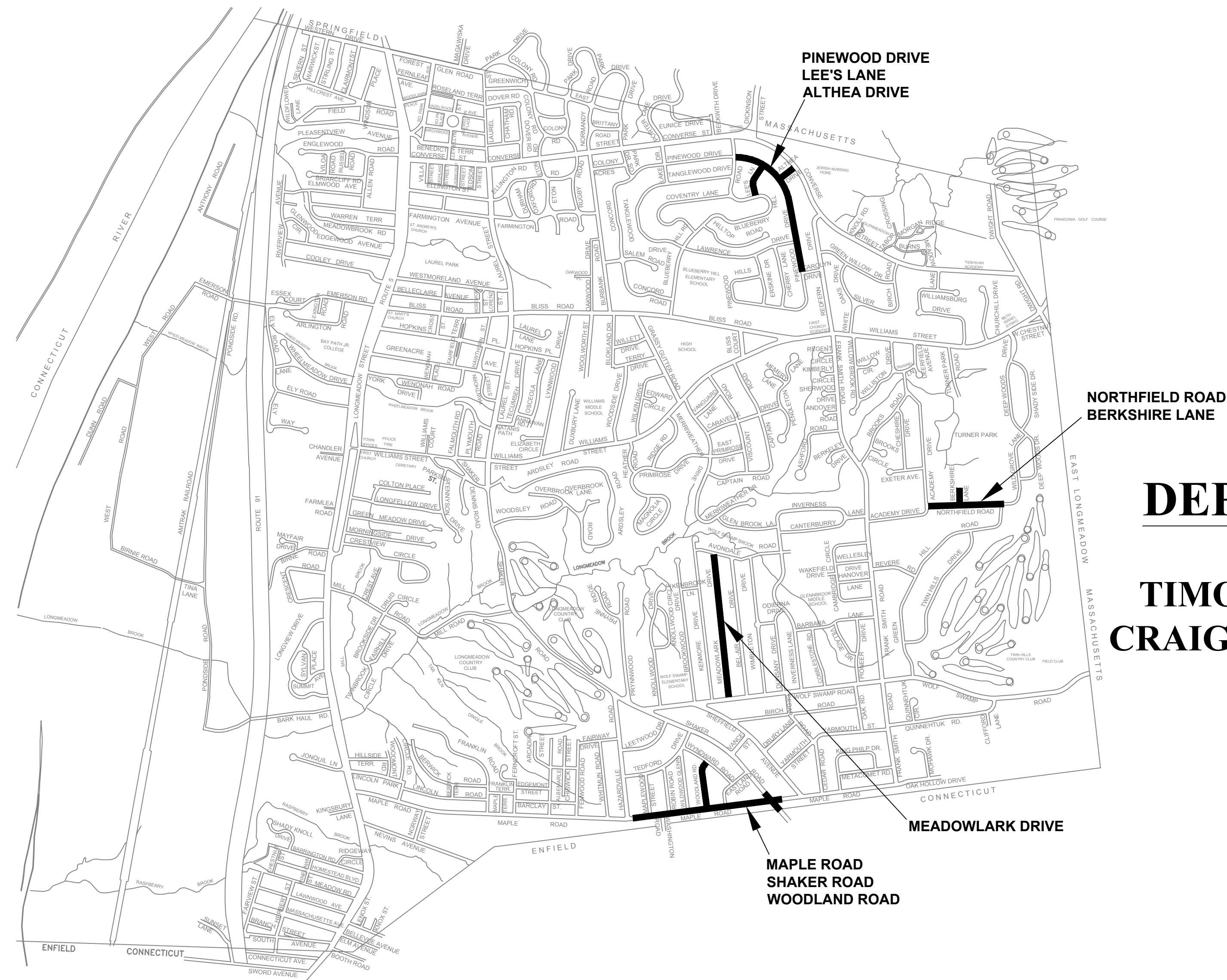
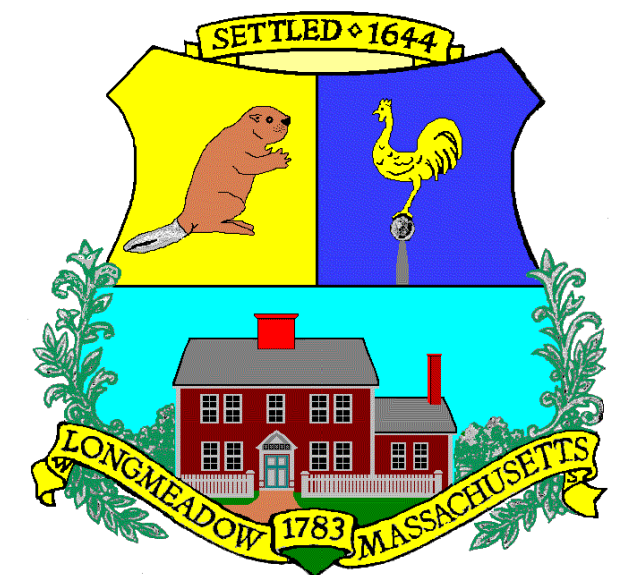
CALENDAR YEAR 2021 ROAD RESURFACING PROJECT

SELECT BOARD
THOMAS LACHIUSA, CHAIRPERSON
MARC STRANGE, VICE CHAIR
STEVEN MARANTZ, CLERK
RICHARD FOSTER, MEMBER
MARK P. GOLD, MEMBER

TOWN MANAGER
LYN N. SIMMONS

DEPARTMENT OF PUBLIC WORKS
GEOFF MCALMOND, DIRECTOR
TIMOTHY KEANE, P.E., LSP TOWN ENGINEER
CRAIG MARKHAM, ASSISTANT TOWN ENGINEER

Longmeadow
Engineering
Department

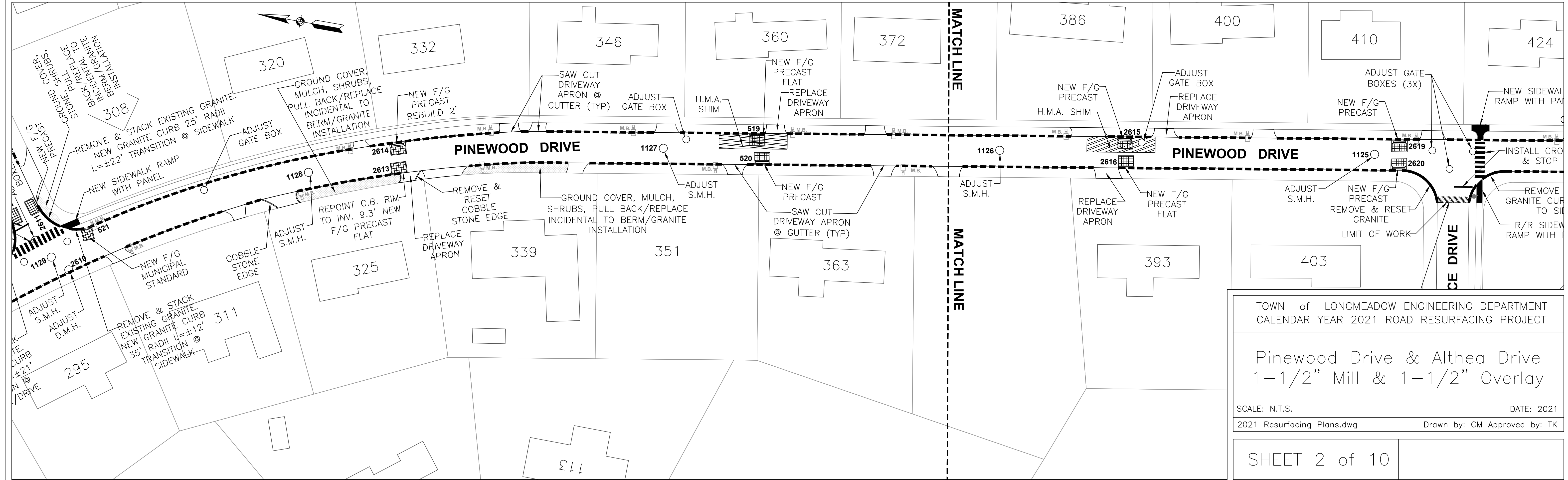
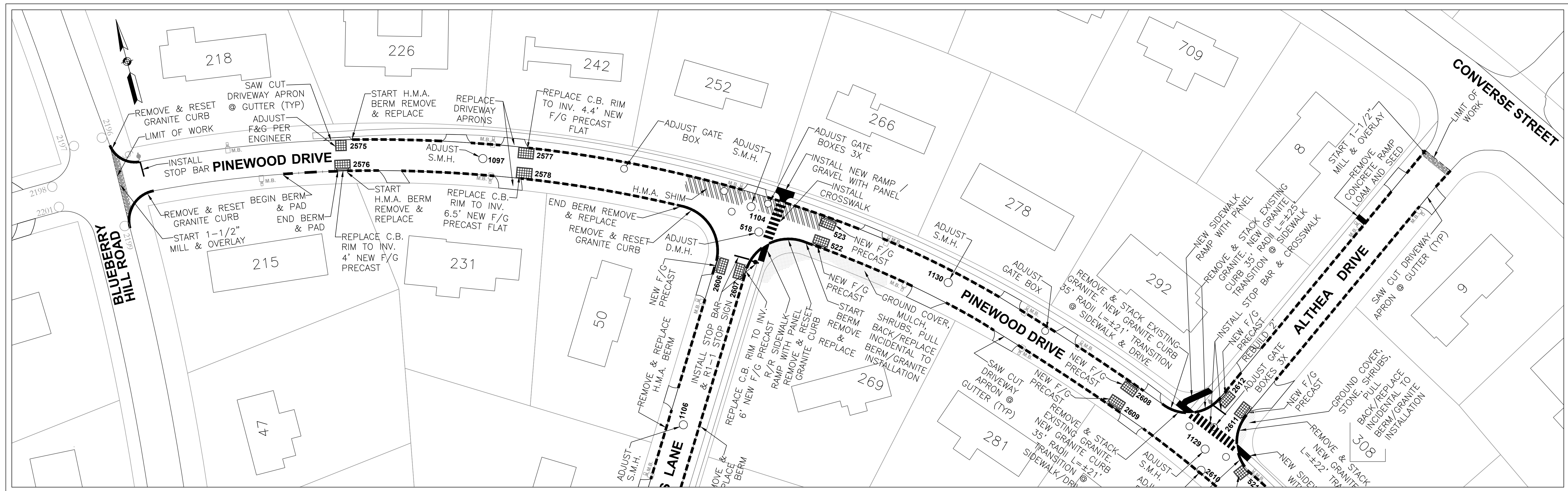


LOCUS MAP
 Not To Scale

INDEX

SHEET NUMBER	DESCRIPTION
1	COVER SHEET
2-3	PINEWOOD DRIVE & ALTHEA DRIVE & LEE'S LANE
4	NORTHFIELD ROAD & BERKSHIRE LANE
5-6	MEADOWLARK DRIVE
7-8	MAPLE ROAD WOODLAND ROAD
9-10	DETAILS

COMPLETE SET 10 SHEETS

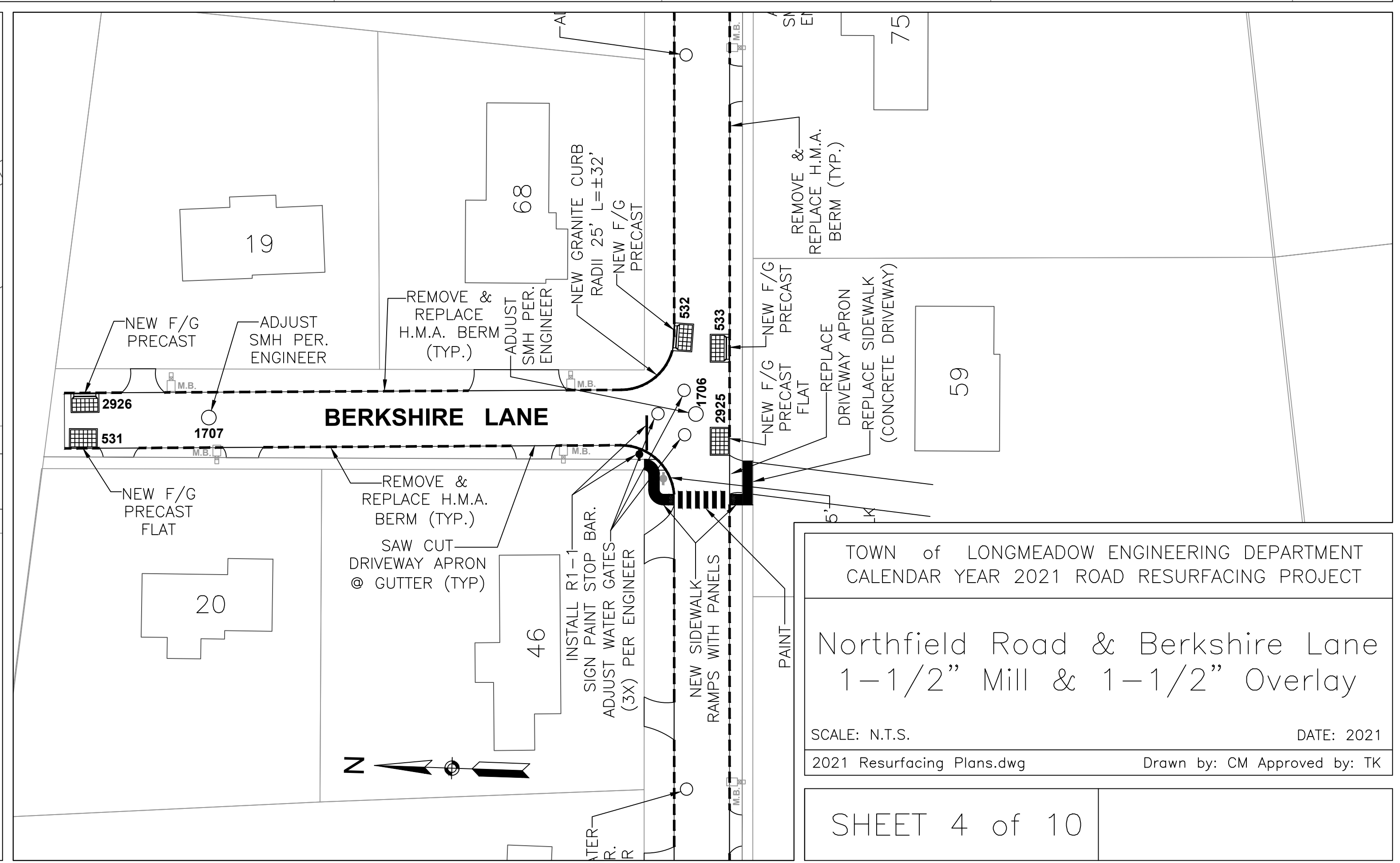
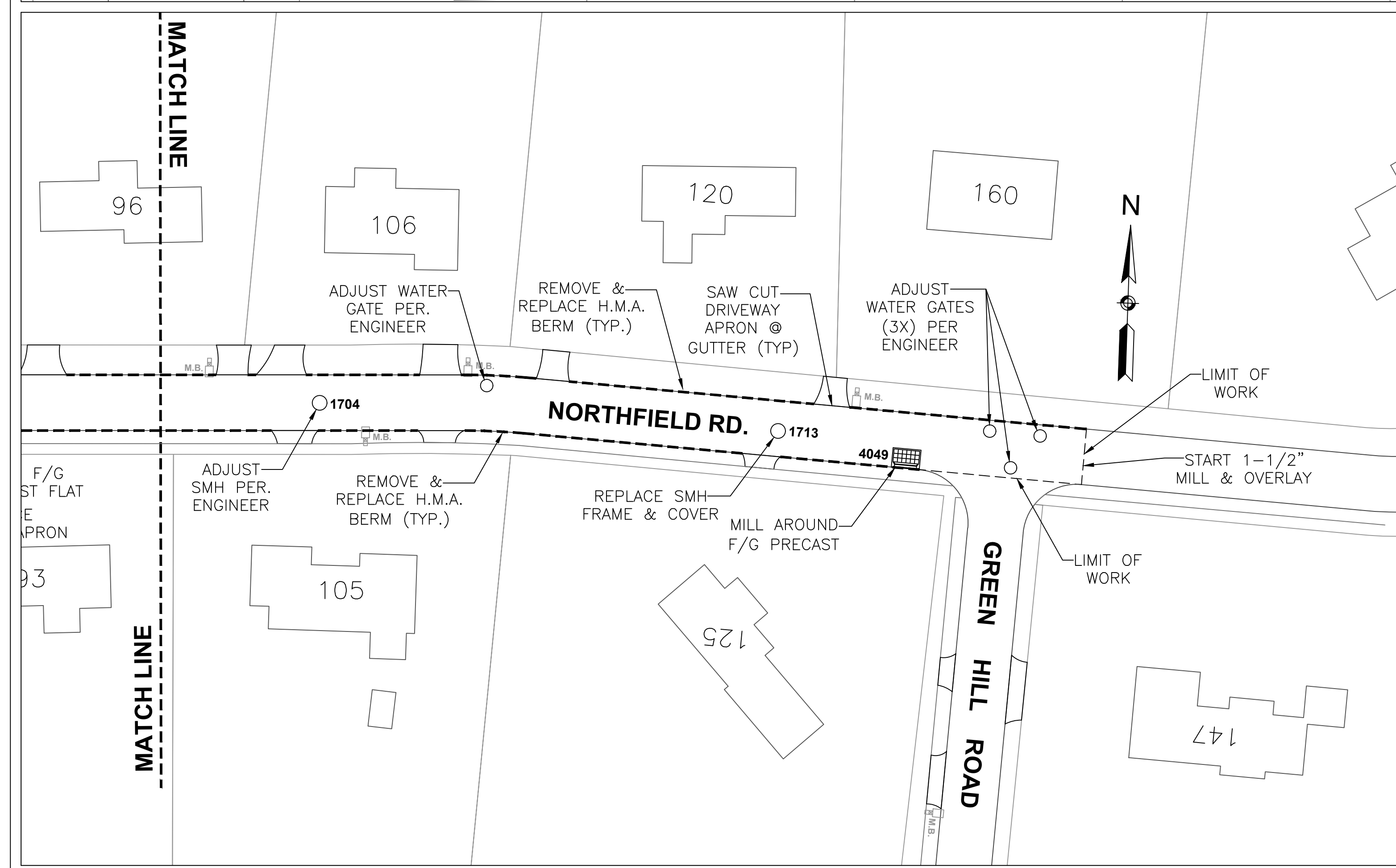
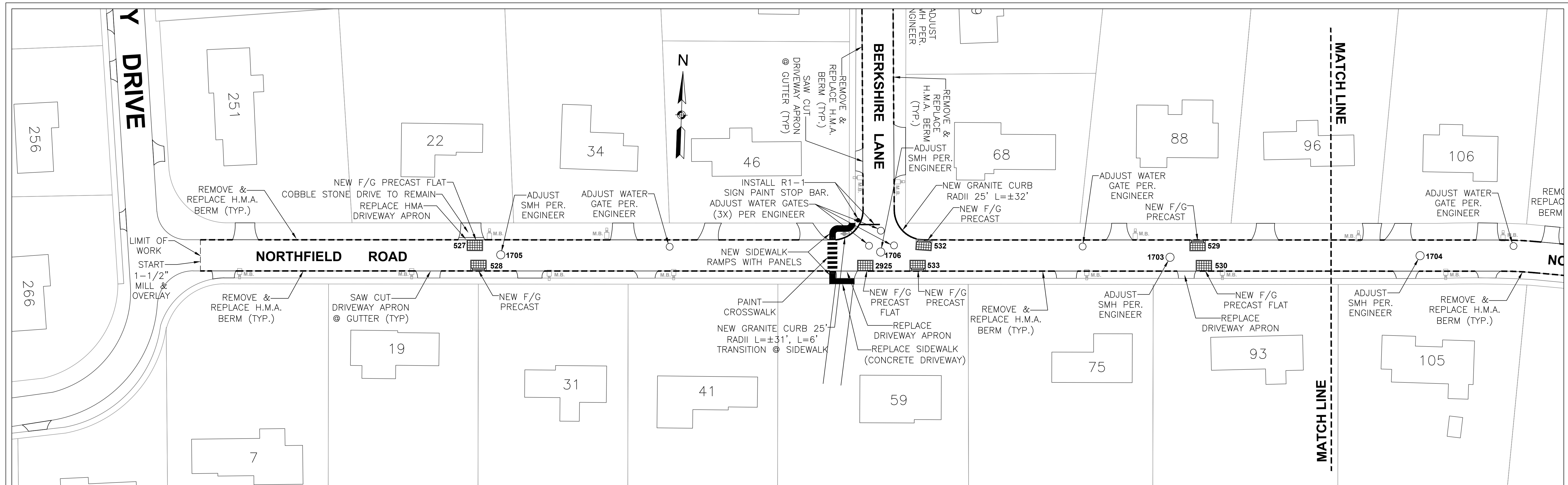


TOWN of LONGMEADOW ENGINEERING DEPARTMENT
 CALENDAR YEAR 2021 ROAD RESURFACING PROJECT

 Pinewood Drive & Althea Drive
 1-1/2" Mill & 1-1/2" Overlay

 SCALE: N.T.S. DATE: 2021
 2021 Resurfacing Plans.dwg Drawn by: CM Approved by: TK

 SHEET 2 of 10

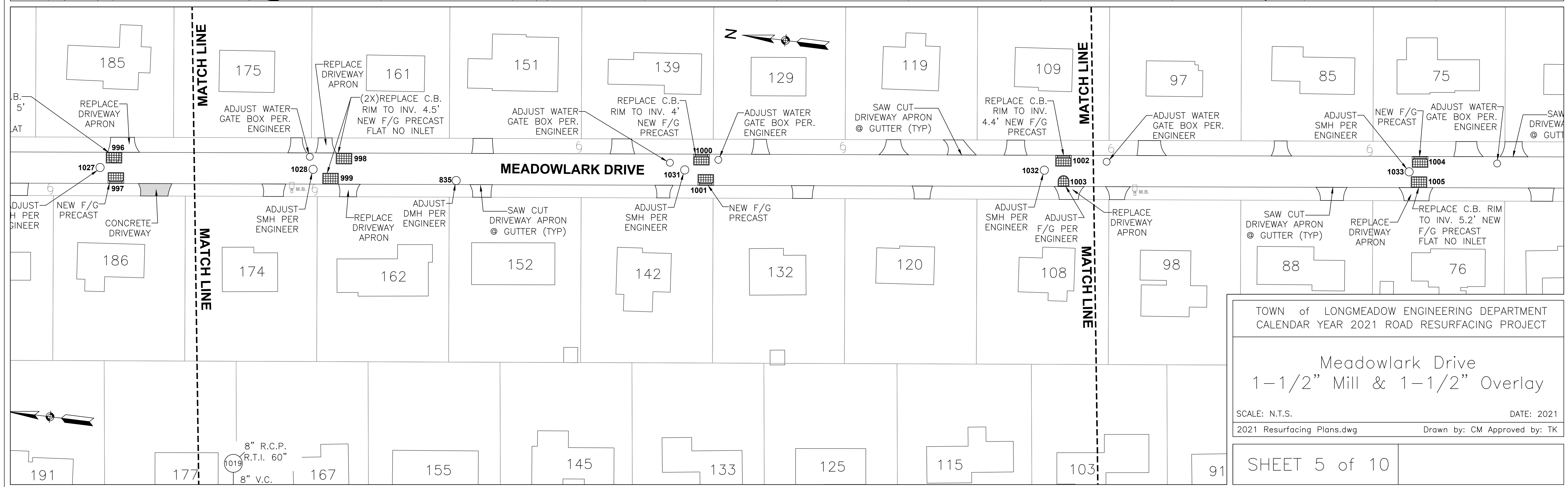
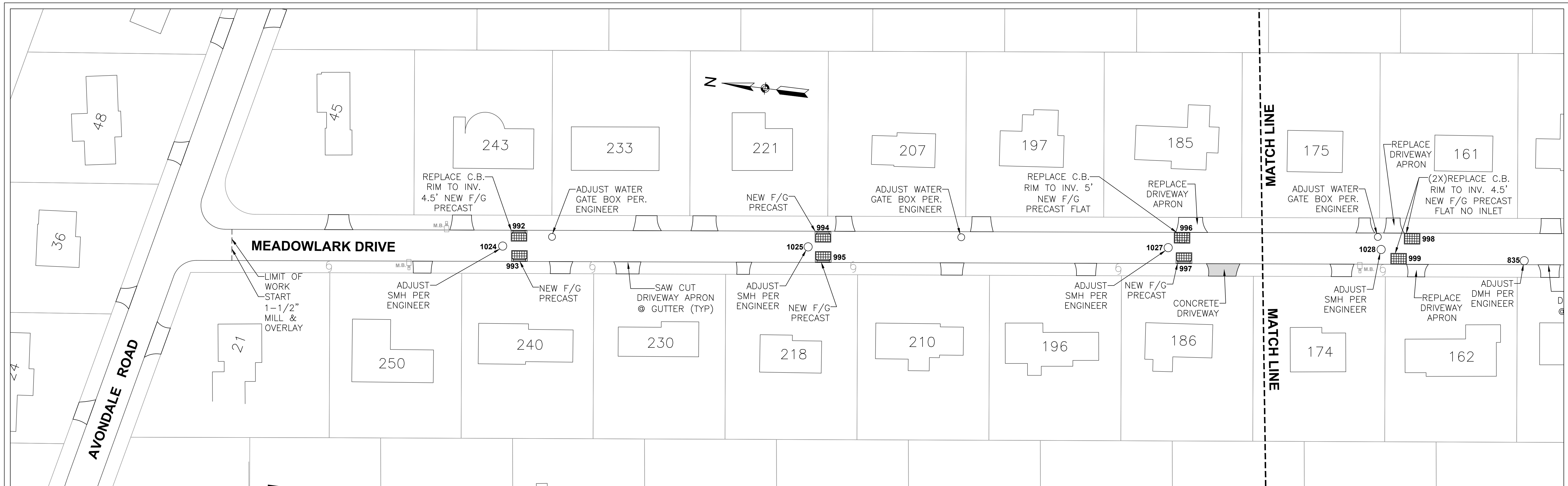


TOWN of LONGMEADOW ENGINEERING DEPARTMENT
 CALENDAR YEAR 2021 ROAD RESURFACING PROJECT

Northfield Road & Berkshire Lane
 1-1/2" Mill & 1-1/2" Overlay

SCALE: N.T.S. DATE: 2021
 2021 Resurfacing Plans.dwg Drawn by: CM Approved by: TK

SHEET 4 of 10

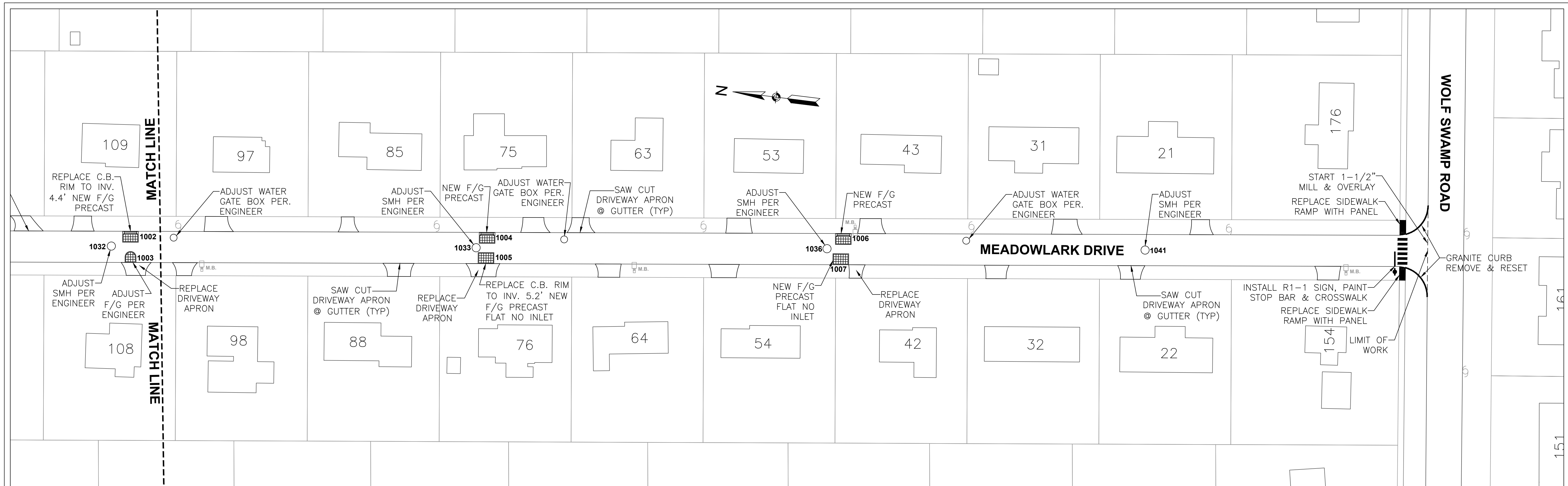


TOWN of LONGMEADOW ENGINEERING DEPARTMENT
 CALENDAR YEAR 2021 ROAD RESURFACING PROJECT

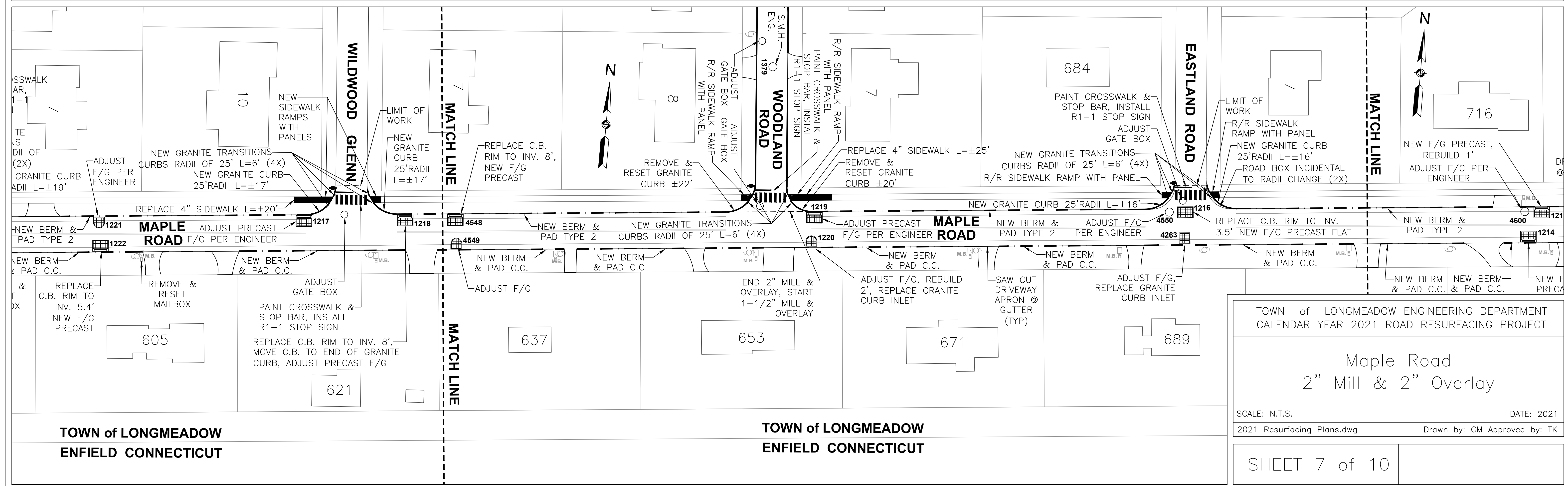
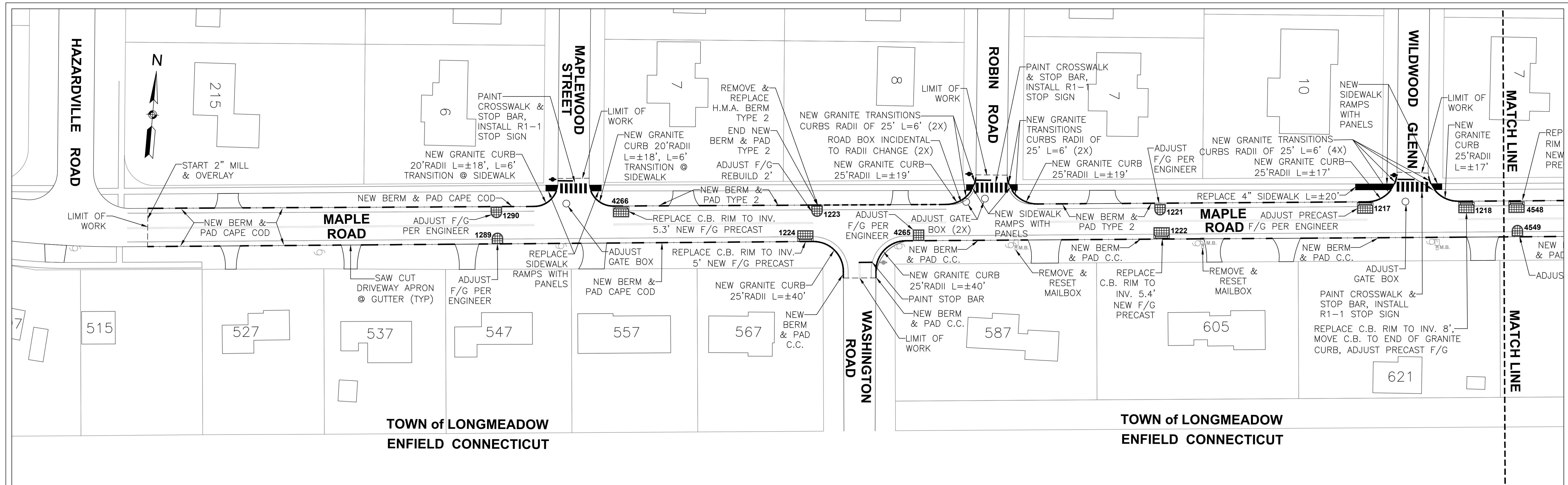
Meadowlark Drive
 1-1/2" Mill & 1-1/2" Overlay

SCALE: N.T.S. DATE: 2021
 2021 Resurfacing Plans.dwg Drawn by: CM Approved by: TK

SHEET 5 of 10



TOWN of LONGMEADOW ENGINEERING DEPARTMENT CALENDAR YEAR 2021 ROAD RESURFACING PROJECT	
Meadowlark Drive 1-1/2" Mill, 1-1/2" Top	
SCALE: N.T.S.	DATE: 2020
2021 Resurfacing Plans.dwg	Drawn by: CM Approved by: TK
SHEET 6 of 10	



TOWN of LONGMEADOW ENGINEERING DEPARTMENT
CALENDAR YEAR 2021 ROAD RESURFACING PROJECT

Maple Road
2" Mill & 2" Overlay

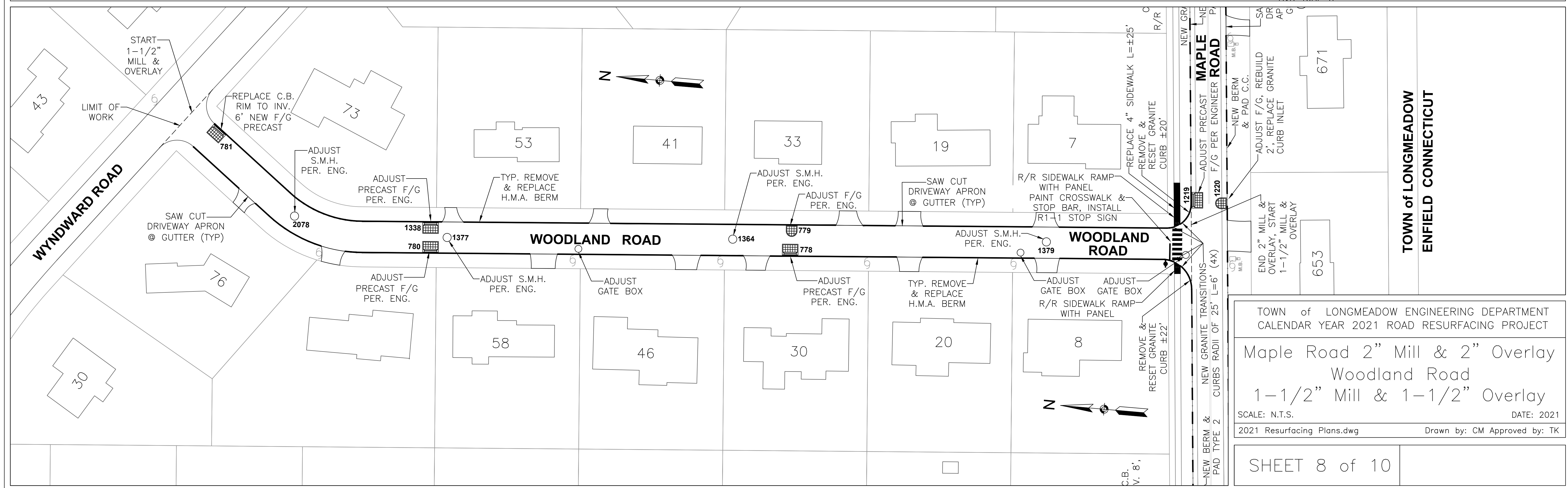
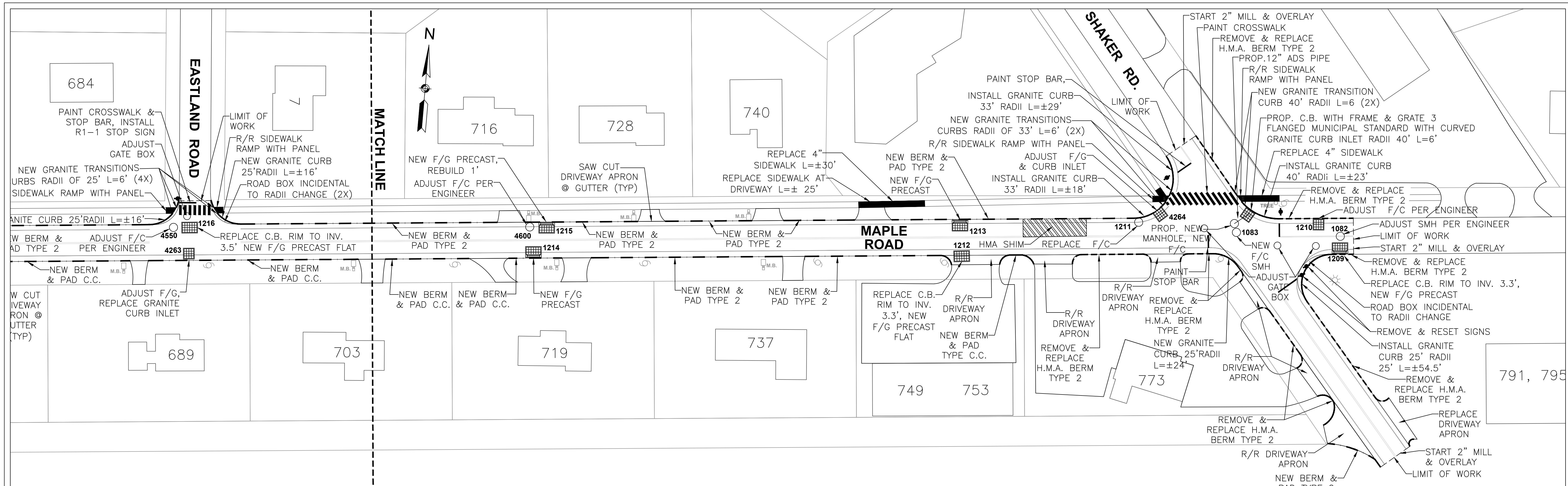
SCALE: N.T.S. DATE: 2021

2021 Resurfacing Plans.dwg Drawn by: CM Approved by: TK

SHEET 7 of 10

TOWN of LONGMEADOW
ENFIELD CONNECTICUT

TOWN of LONGMEADOW
ENFIELD CONNECTICUT



TOWN of LONGMEADOW ENGINEERING DEPARTMENT
 CALENDAR YEAR 2021 ROAD RESURFACING PROJECT

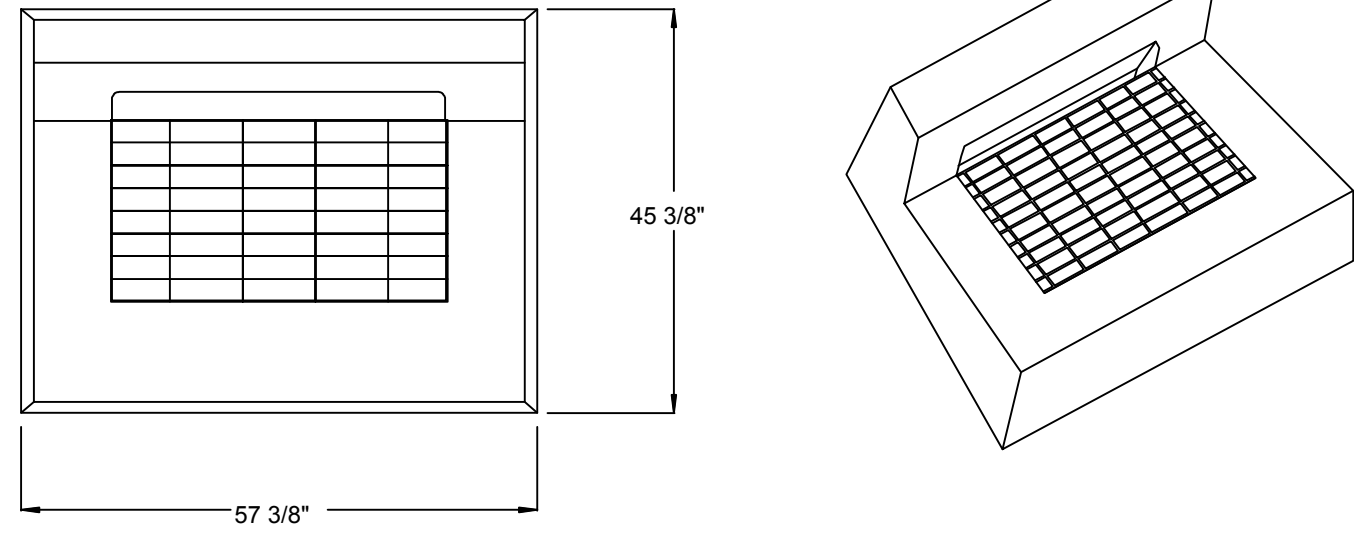
Maple Road 2" Mill & 2" Overlay
 Woodland Road
 1-1/2" Mill & 1-1/2" Overlay

SCALE: N.T.S. DATE: 2021
 2021 Resurfacing Plans.dwg Drawn by: CM Approved by: TK

SHEET 8 of 10

DESIGN NOTES

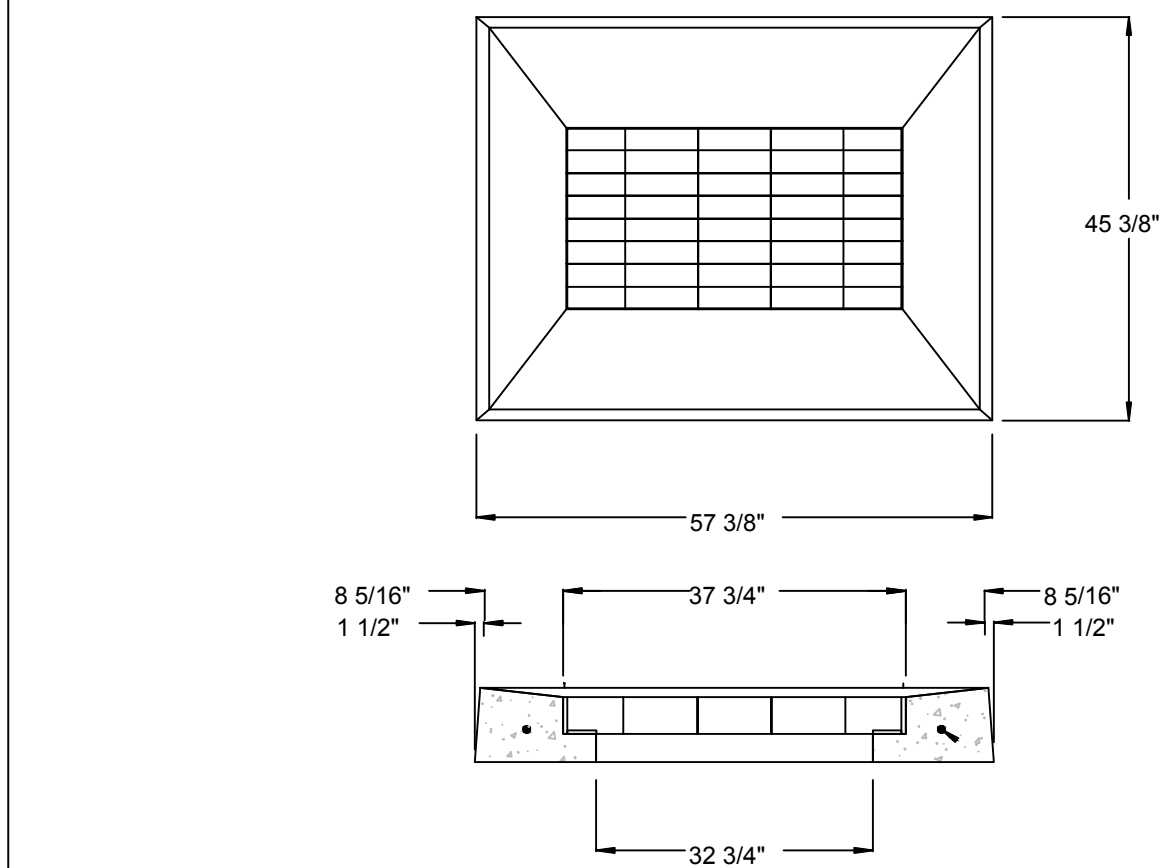
1. CONCRETE -5000 PSI, 28 DAYS
2. REINFORCEMENT - ASTM A-615, GRADE 60
3. GALVANIZED FRAME & GRATE



TYPE "C" TOP SPECIAL (ITEM 222.1)

N.T.S.

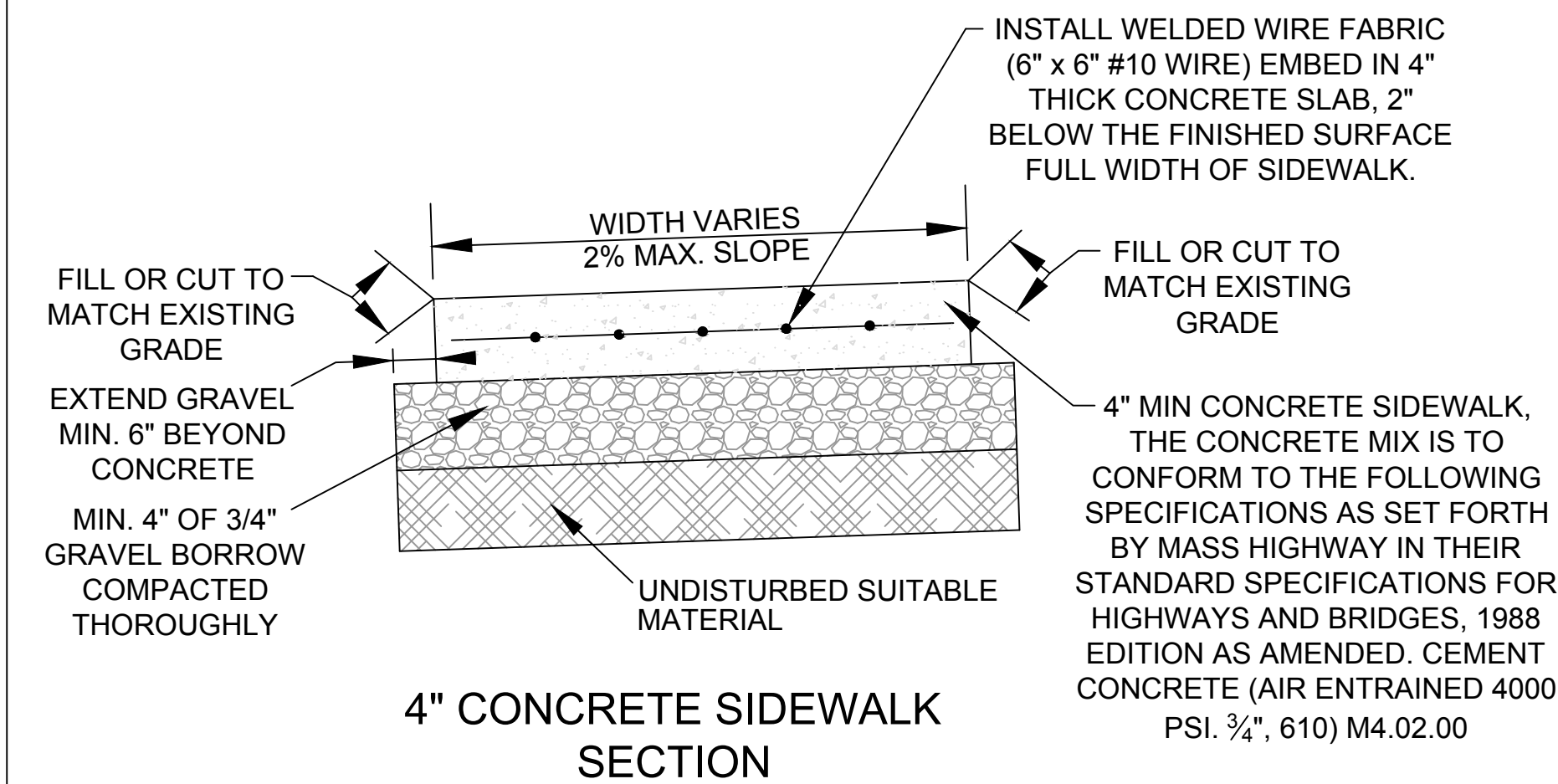
NOTE: ADJUSTMENT OF STRUCTURES TO LINE OR GRADE OR BOTH LINE AND GRADE WHEN THE CHANGE IS 6 INCHES OR LESS, WILL BE MEASURED IN PLACE BY THE UNIT EACH, COMPLETE AND APPROVED. NO ADDITIONAL COMPENSATION FOR ADJUSTMENT.



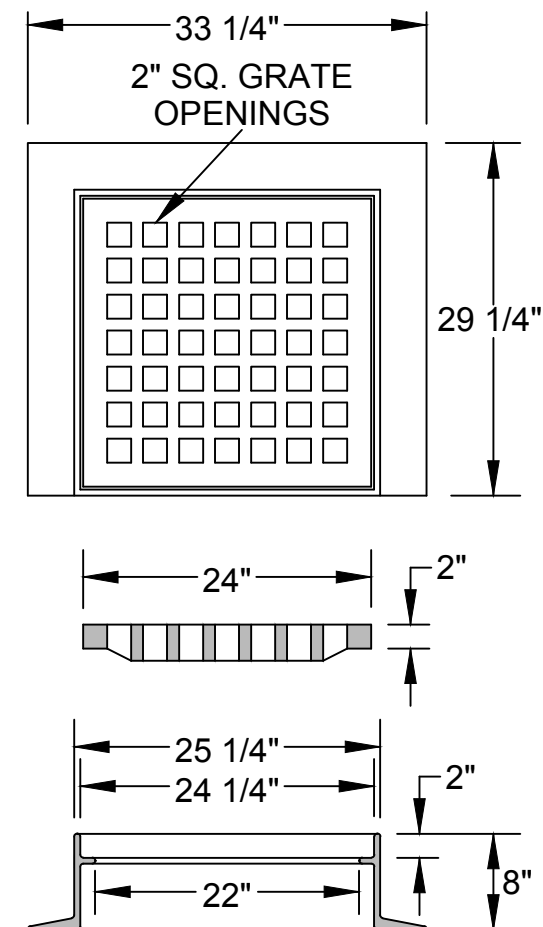
TYPE "CL" TOP FLAT (ITEM 222.2)

N.T.S.

NOTE: ADJUSTMENT OF STRUCTURES TO LINE OR GRADE OR BOTH LINE AND GRADE WHEN THE CHANGE IS 6 INCHES OR LESS, WILL BE MEASURED IN PLACE BY THE UNIT EACH, COMPLETE AND APPROVED. NO ADDITIONAL COMPENSATION FOR ADJUSTMENT.



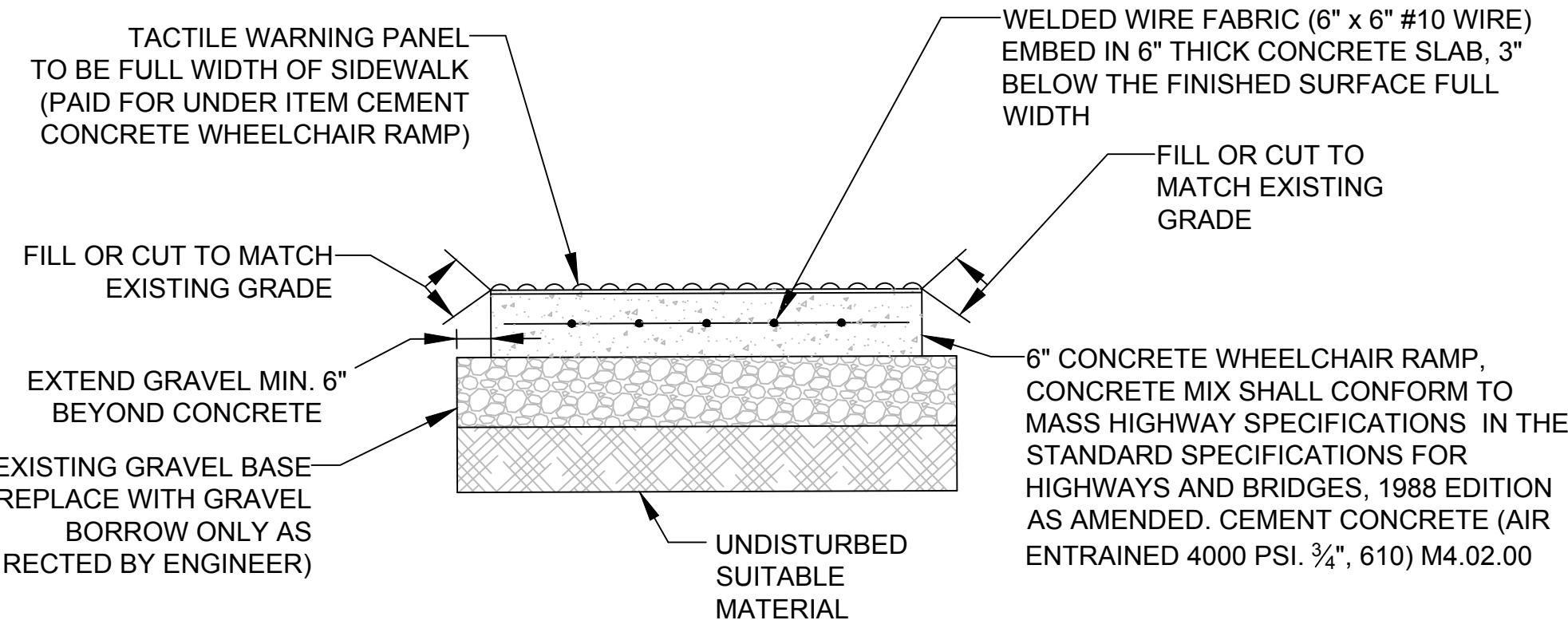
4" CONCRETE SIDEWALK SECTION



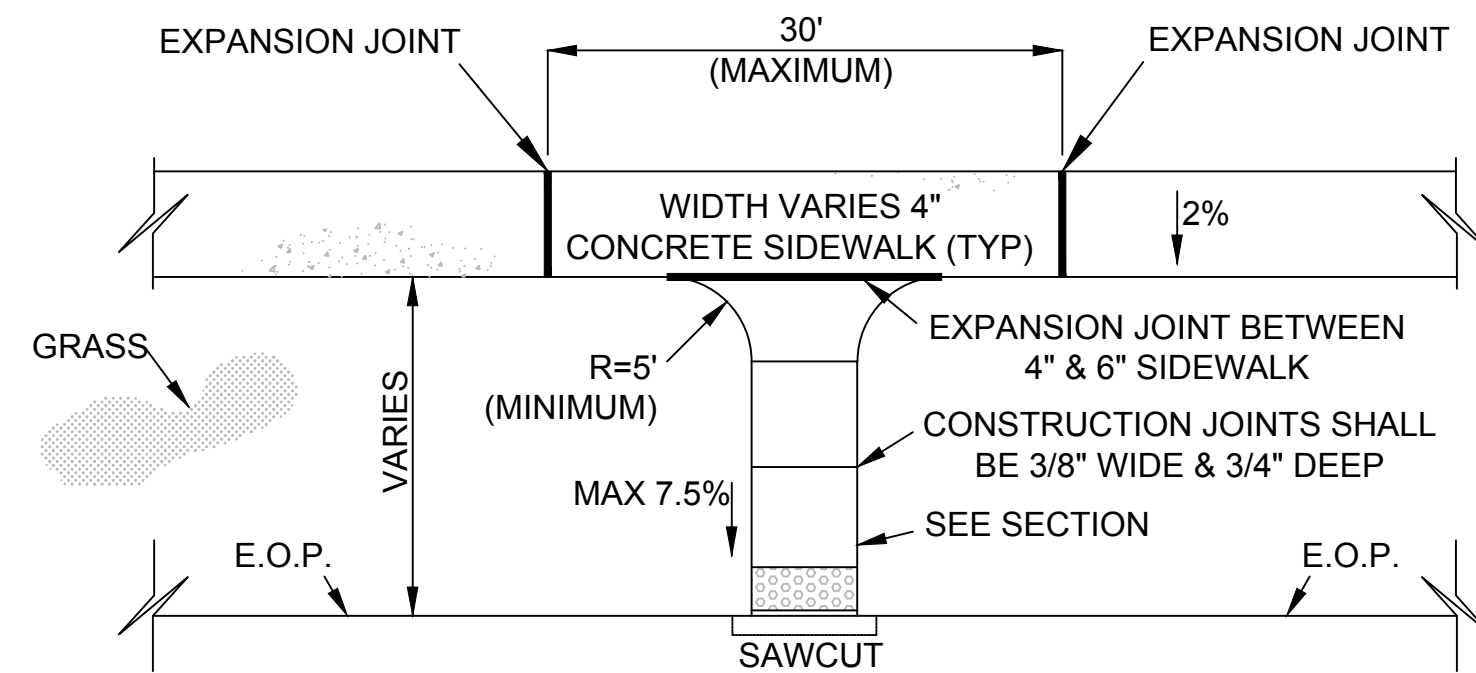
MUNICIPAL STANDARD HEAVY DUTY CATCH BASIN FRAME & COVER DETAIL. 24"X24", 8" FRAME, 3 FLANGE or 4 FLANGE (ITEM 222)

N.T.S.

NOTE: ADJUSTMENT OF STRUCTURES TO LINE OR GRADE OR BOTH LINE AND GRADE WHEN THE CHANGE IS 6 INCHES OR LESS, WILL BE MEASURED IN PLACE BY THE UNIT EACH, COMPLETE AND APPROVED. NO ADDITIONAL COMPENSATION FOR ADJUSTMENT.

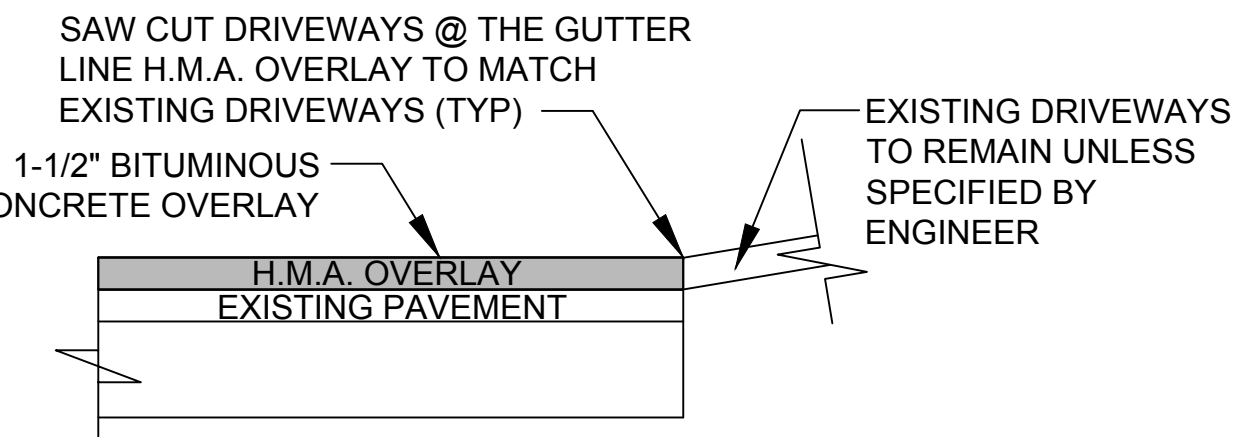


SECTION N.T.S.



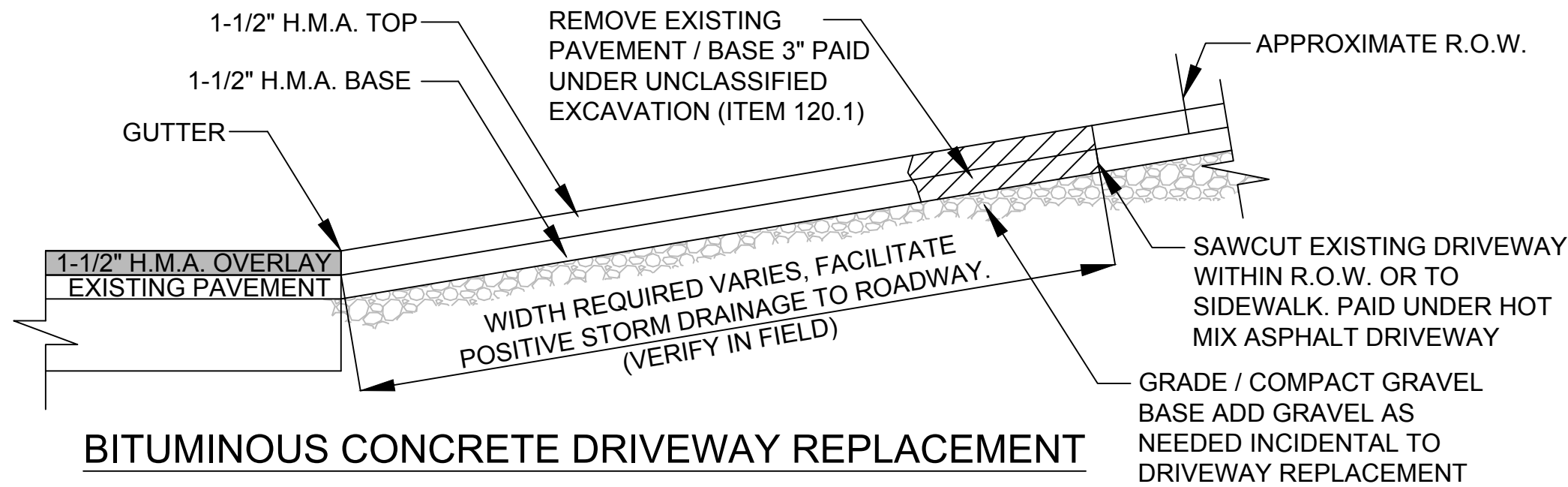
NOTE: SIDEWALK RAMPS TO HAVE 5'X5' MINIMUM LEVEL LANDING WITH 1.5% MAXIMUM CROSS SLOPE (ALL DIRECTIONS) WITH 2' X 4' YELLOW R304 TACTILE WARNING PANEL (TYPICAL)

CONCRETE SIDEWALK WHEELCHAIR RAMP N.T.S.



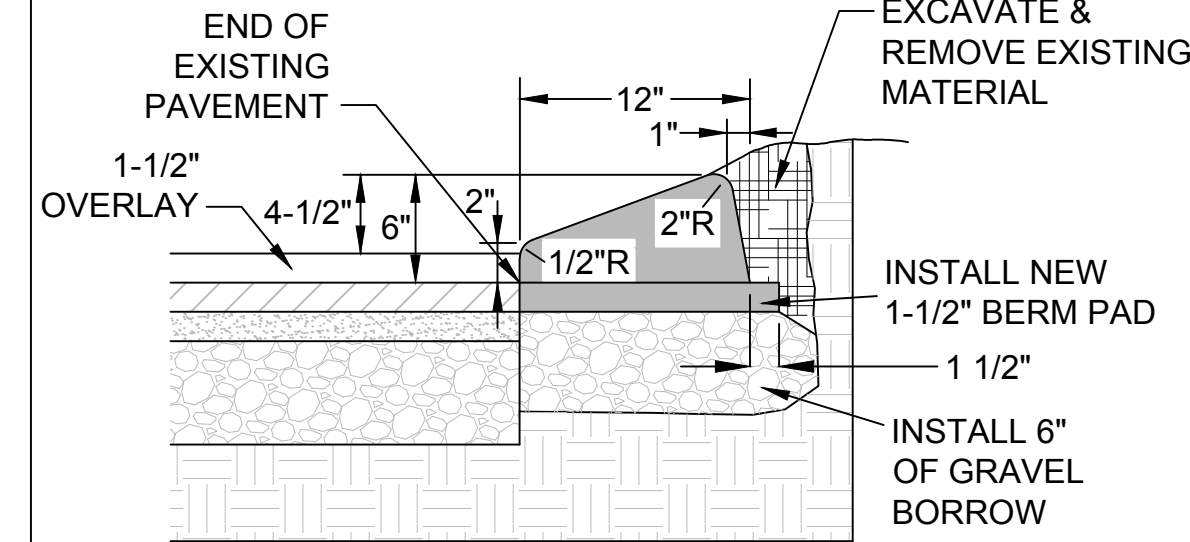
BITUMINOUS CONCRETE DRIVEWAY TO REMAIN

N.T.S.



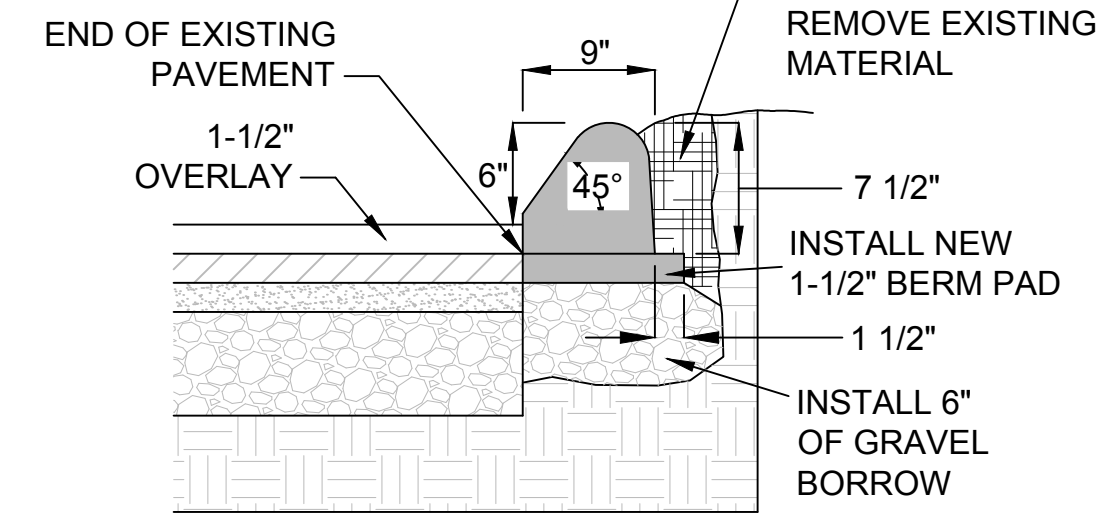
BITUMINOUS CONCRETE DRIVEWAY REPLACEMENT

N.T.S.



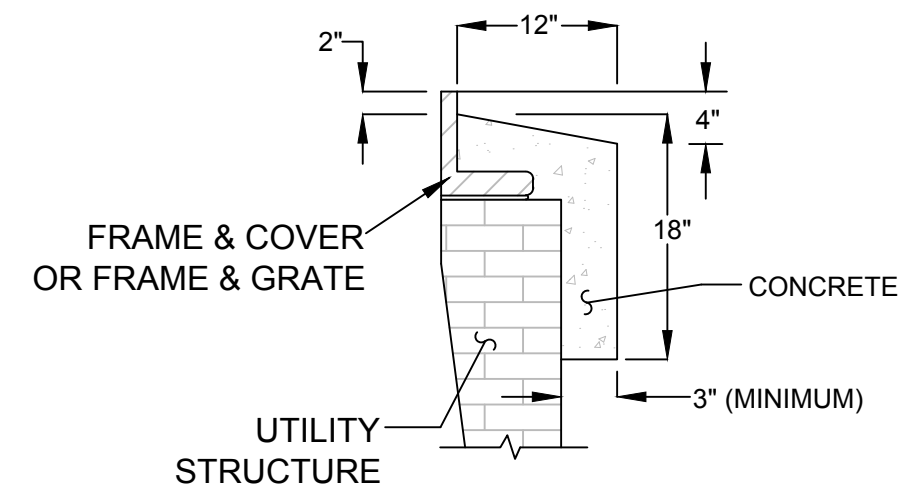
H.M.A. BERM & PAD TYPE CAPE COD N.T.S.

NOTE: EXCAVATION, BERM PAD, & GRAVEL TO BE PAID UNDER H.M.A. BERM & PAD.

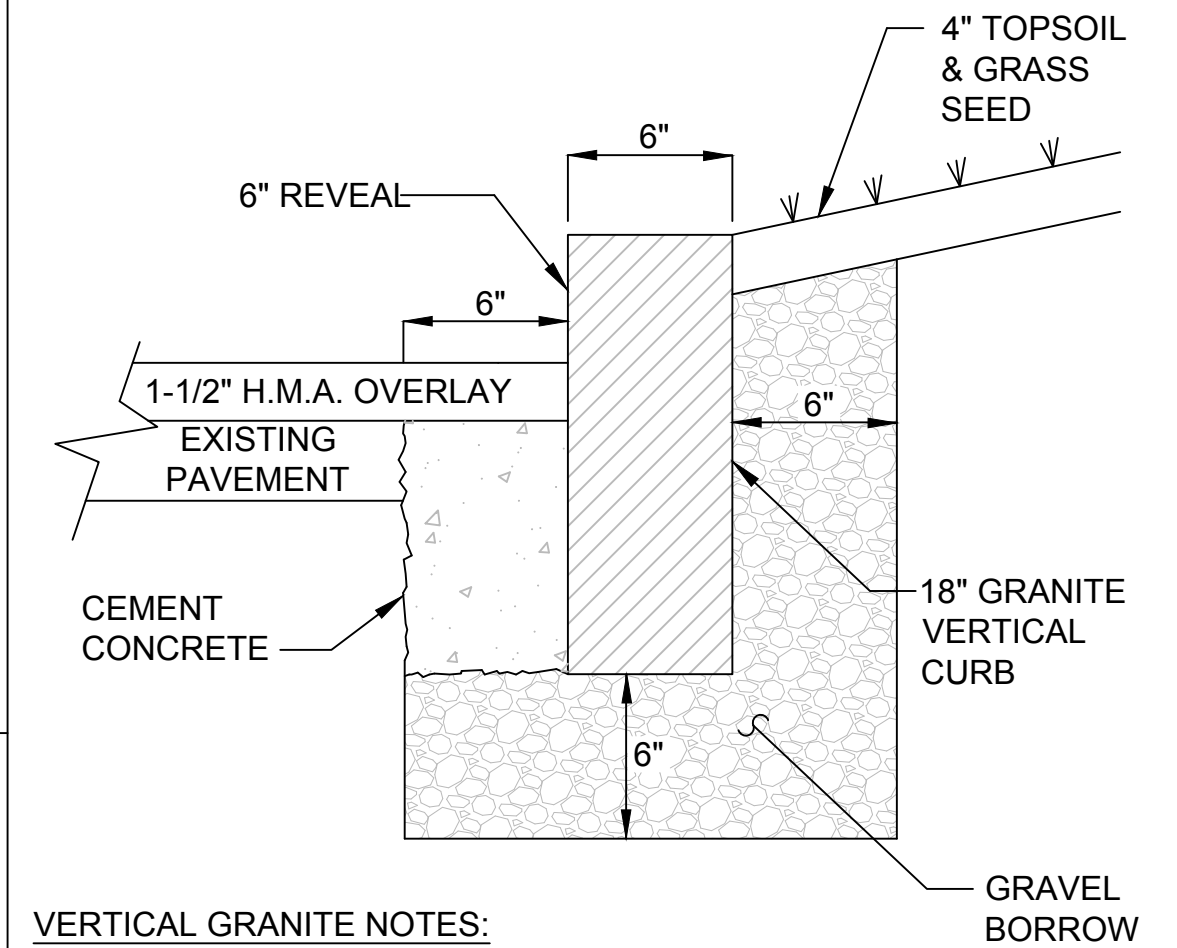


H.M.A. BERM & PAD TYPE 2 N.T.S.

NOTE: CONCRETE COLLAR TO BE PAD UNDER DRAIN STRUCTURE ADJUST, SANITARY STRUCTURE ADJUST, FRAME AND COVER NEW, FRAME AND GRATE NEW, FRAME AND GRATE PRECAST NEW,



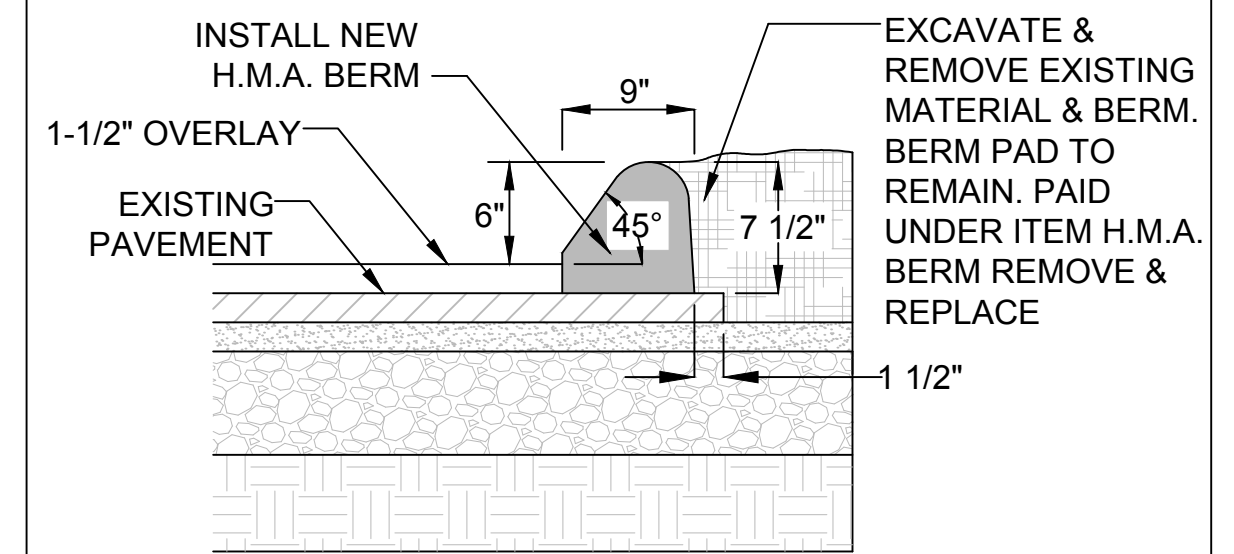
CONCRETE COLLAR N.T.S.



VERTICAL GRANITE NOTES:

1. CUT NEAT LINE 6" FROM CURB LINE AND REMOVE BINDER, BASE AND STONE REPLACE WITH CEMENT CONCRETE
2. PAYMENT FOR CEMENT CONCRETE WILL BE INCLUDED IN THE PRICE PER LINEAR FOOT OF CURBING.

VERTICAL GRANITE EDGING TYPE VA4 N.T.S.

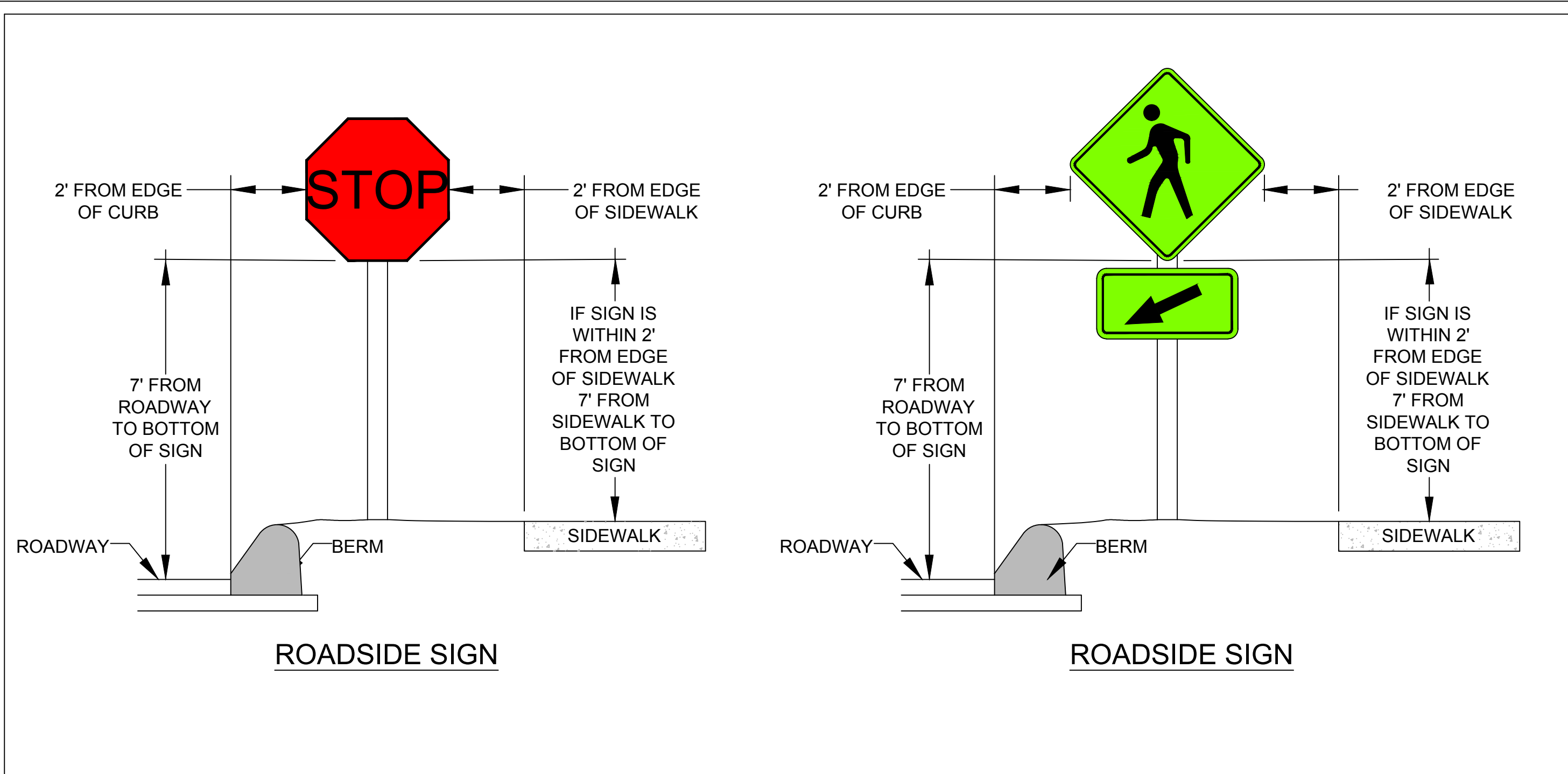


H.M.A. BERM REMOVE & REPLACE, TYPE 2 N.T.S.

TOWN of LONGMEADOW ENGINEERING DEPARTMENT
CALENDAR YEAR 2021 ROAD RESURFACING PROJECT

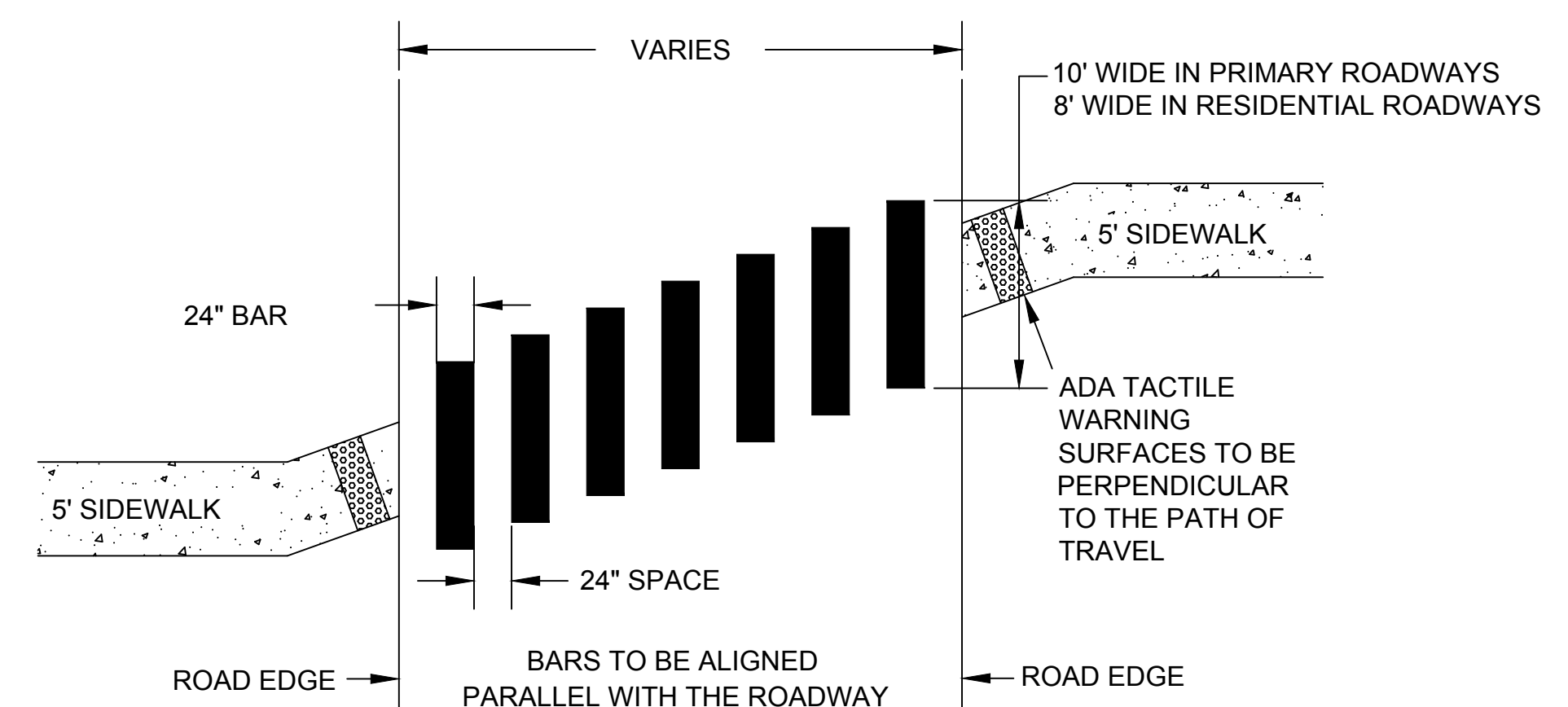
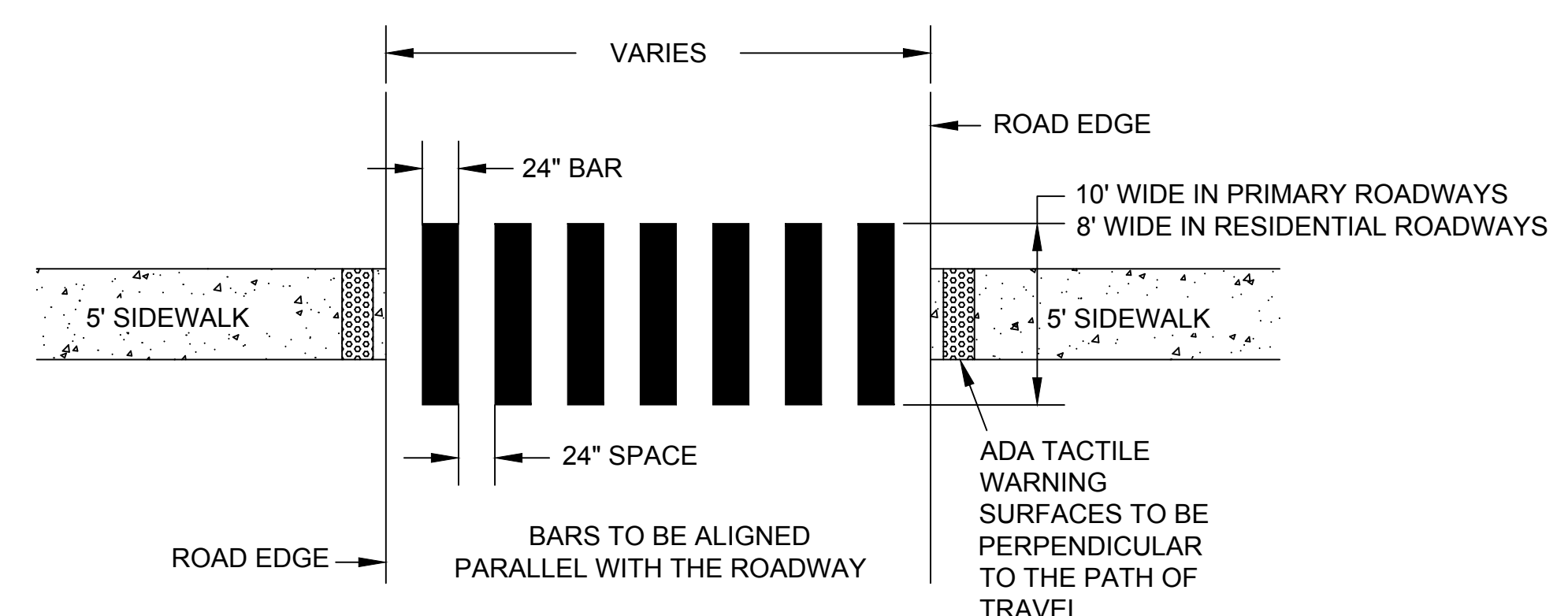
Longmeadow Paving Details 1

SCALE: N.T.S. DATE: 2021
2021 Resurfacing Plans.dwg Drawn by: CM Approved by: TK

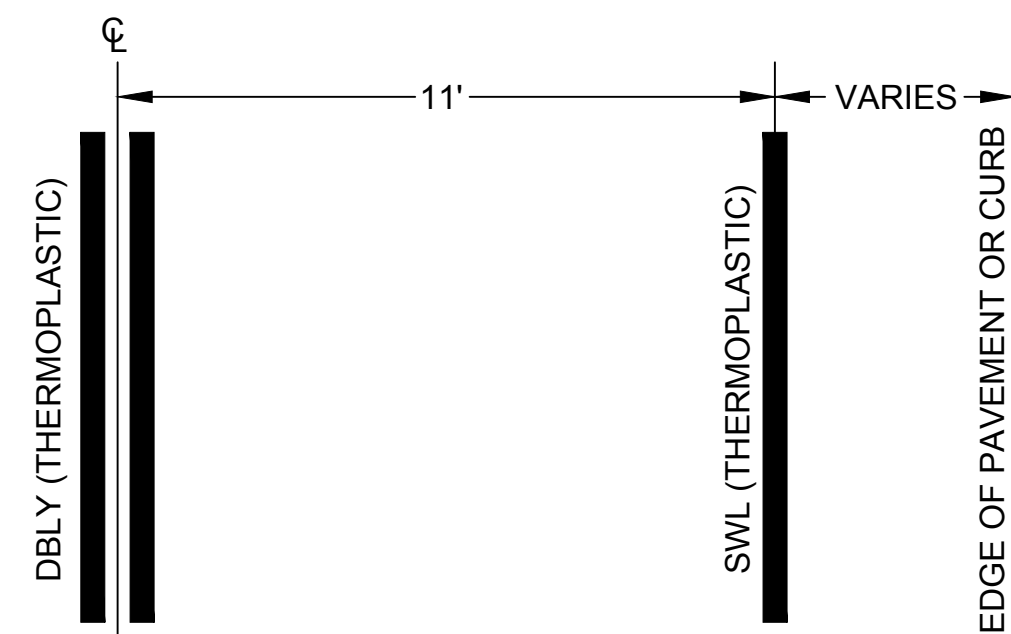


22.5" WIDE X 13.7" HIGH (3" HIGH LETTERS) - 18" X 30" STENCIL SHEET
FIELD STENCIL
 N.T.S.

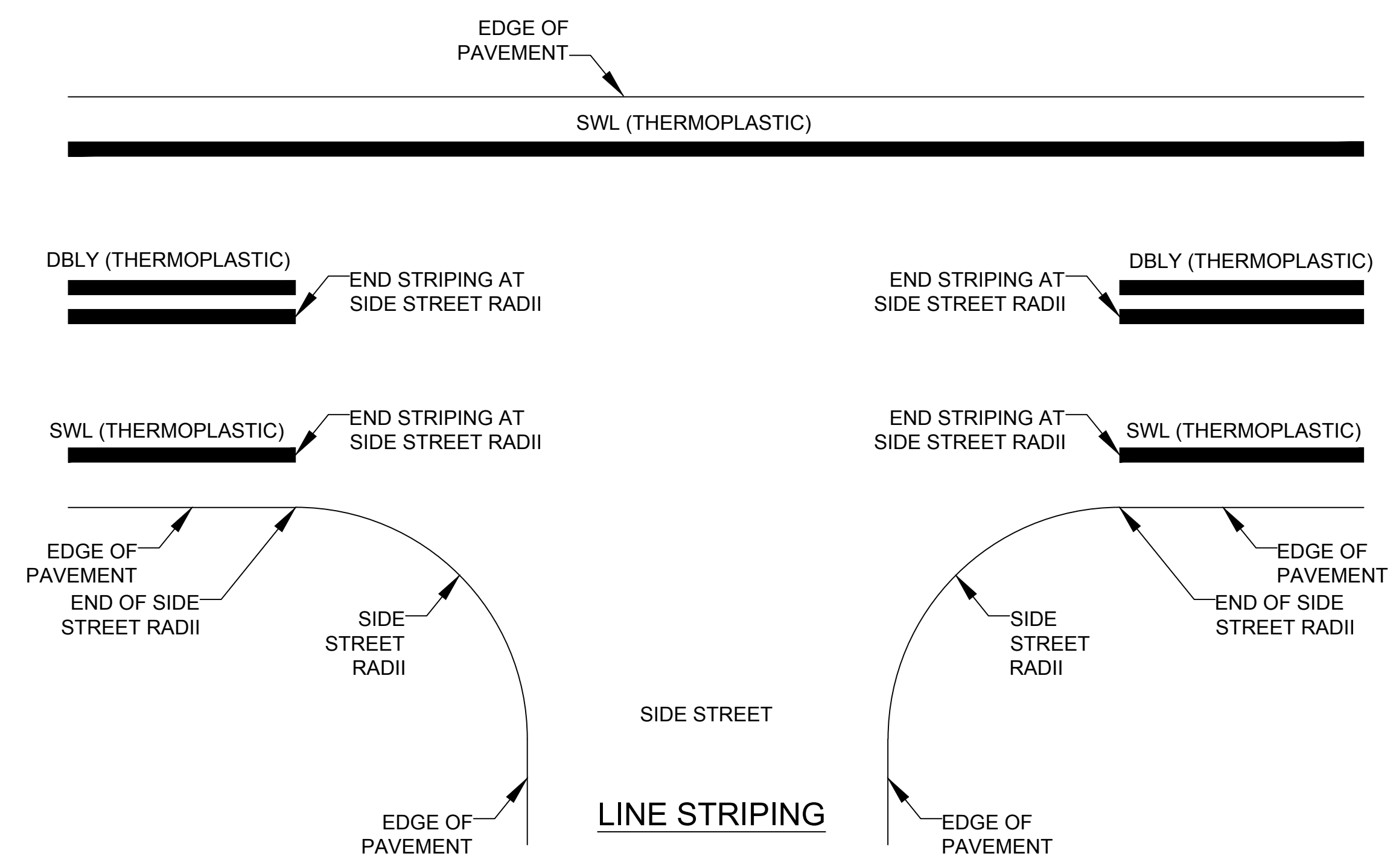
IDENTIFICATION NUMBER	SIZE OF SIGN		TEXT
	WIDTH (IN)	HEIGHT (IN)	
R1-1	30	30	
WW11-2L	30	30	
WW11-2R	30	30	
W16-7p(L)	24	12	
W16-7p(R)	24	12	
W16-9p	24	12	



CROSSWALKS



LINE STRIPING



TOWN of LONGMEADOW ENGINEERING DEPARTMENT
 CALENDAR YEAR 2021 ROAD RESURFACING PROJECT

Longmeadow Paving Details 2

SCALE: N.T.S. DATE: 2021
 2021 Resurfacing Plans.dwg Drawn by: CM Approved by: TK