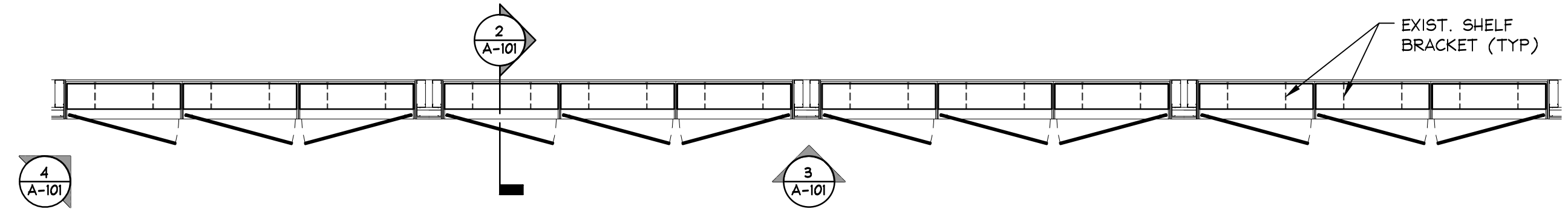
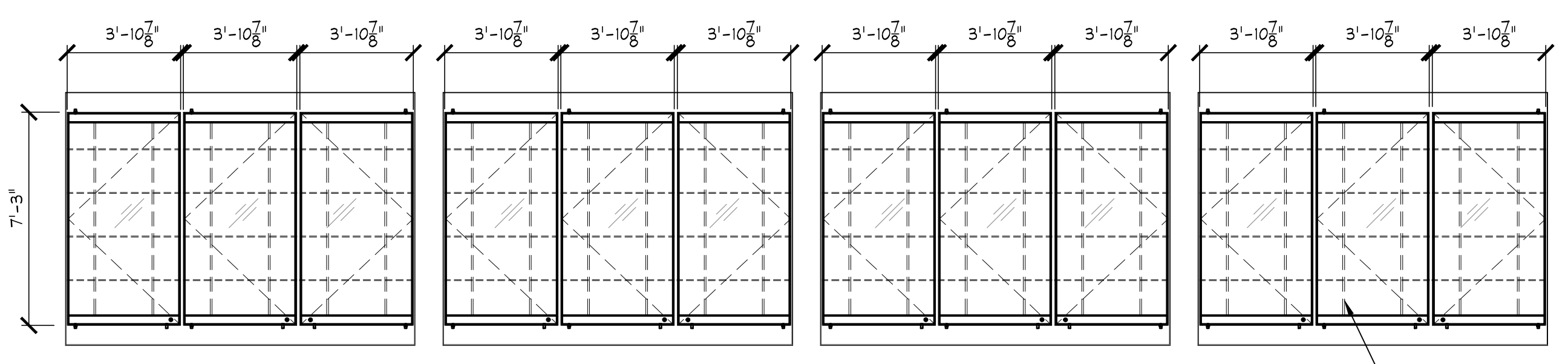
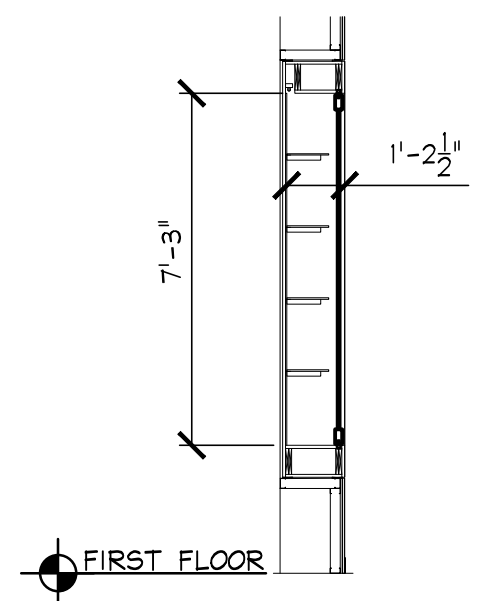


PRELIMINARY

NOT TO BE
USED FOR
CONSTRUCTION



1
DISPLAY CASE #1 PLAN
A-101 1/4" = 1'-0" 0 2' 4' 8'



NOTES: 1. DIMENSIONS REPRESENT EXISTING ROUGH OPENING OF CABINETS.
2. SEE DRAWING A-501 FOR DETAILS.

2
SECTION
A-101 1/4" = 1'-0" 0 2' 4' 8'

3
ELEVATION
A-101 1/4" = 1'-0" 0 2' 4' 8'



4
PHOTOGRAPH
A-101 NTS

REV.	DESCRIPTION	DATE
A	ISSUED FOR CLIENT REVIEW	06/15/21
B	ISSUED FOR BIDDING	09/12/21

TOWN OF LONGMEADOW
LONGMEADOW HIGH SCHOOL
98 GRASSY GUTTER ROAD LONGMEADOW, MA 01106

PROJECT DESCRIPTION

DISPLAY CASE GLASS REPLACEMENT

DRAWING TITLE

DISPLAY CASE #1 PLAN, SECTION AND ELEVATION

DRAWN BY: MTK
DATE DRAWN: 06/09/21
SCALE: AS NOTED
APV'D BY:

CAD CODE: TOL-18-009-A-101.dwg

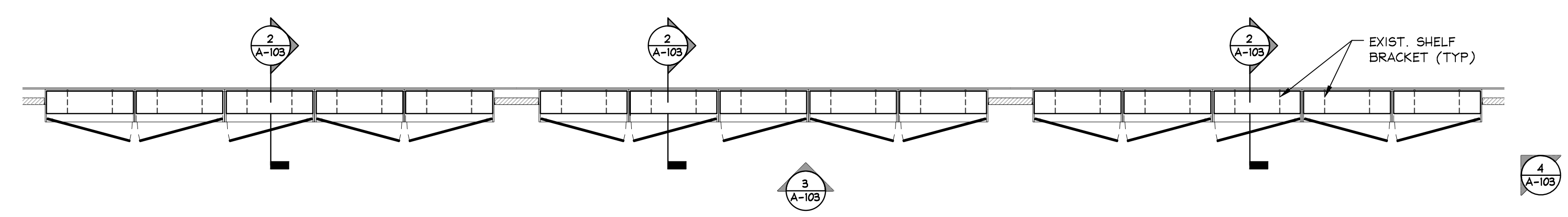
GRAPHIC SCALE:

PROJECT NUMBER: TOL-18-009

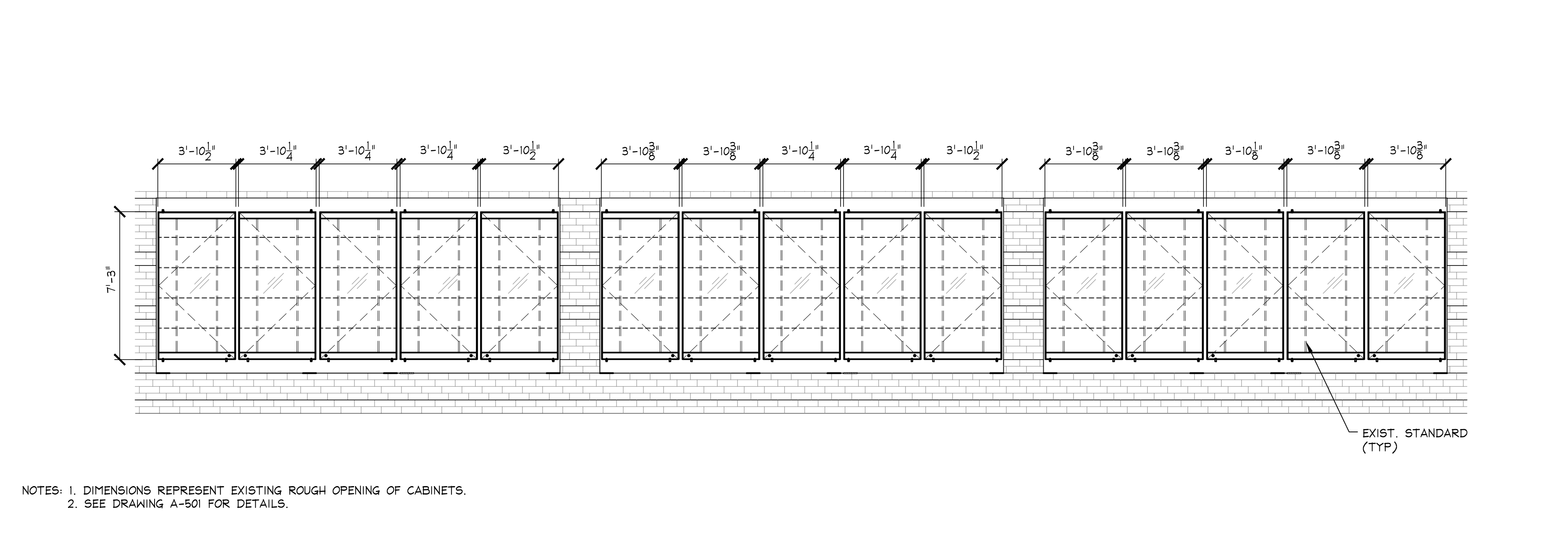
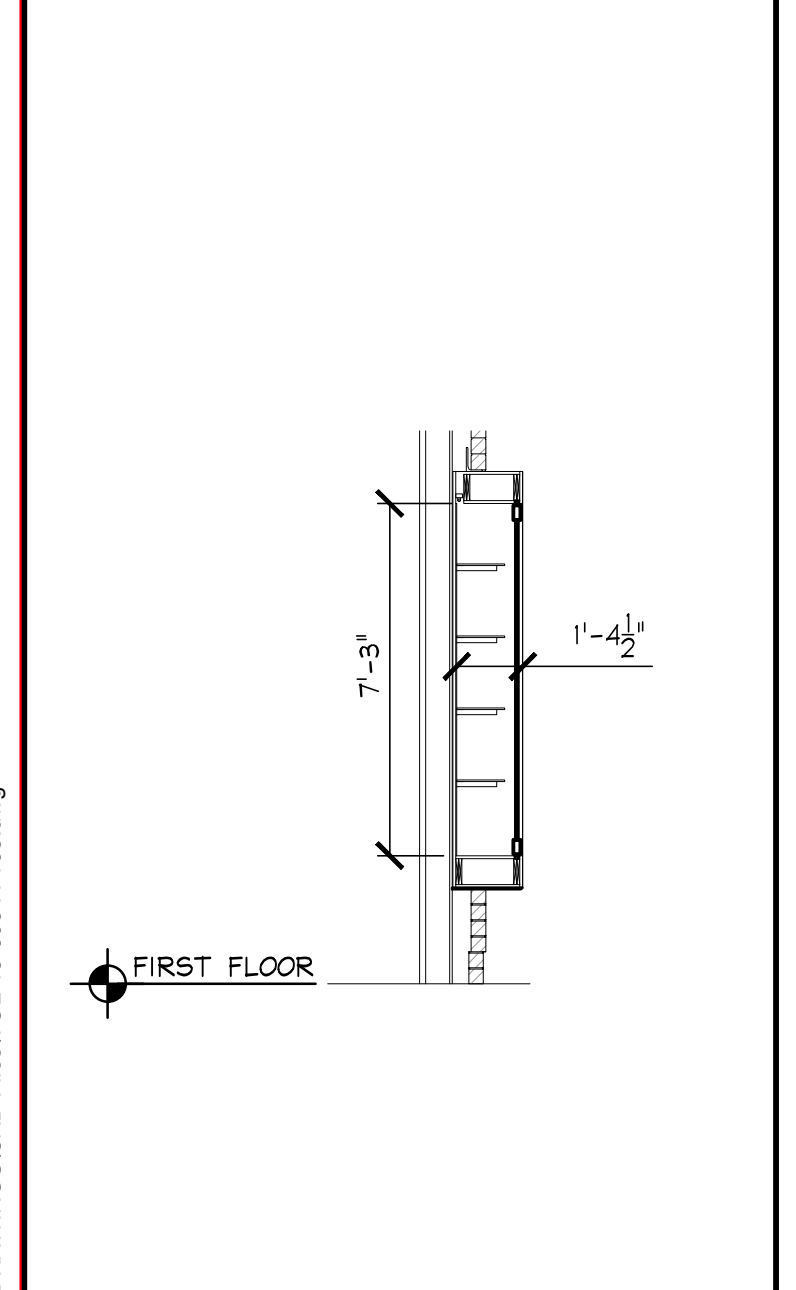
DRAWING NUMBER	REV.
A-101	B

PRELIMINARY

NOT TO BE
USED FOR
CONSTRUCTION



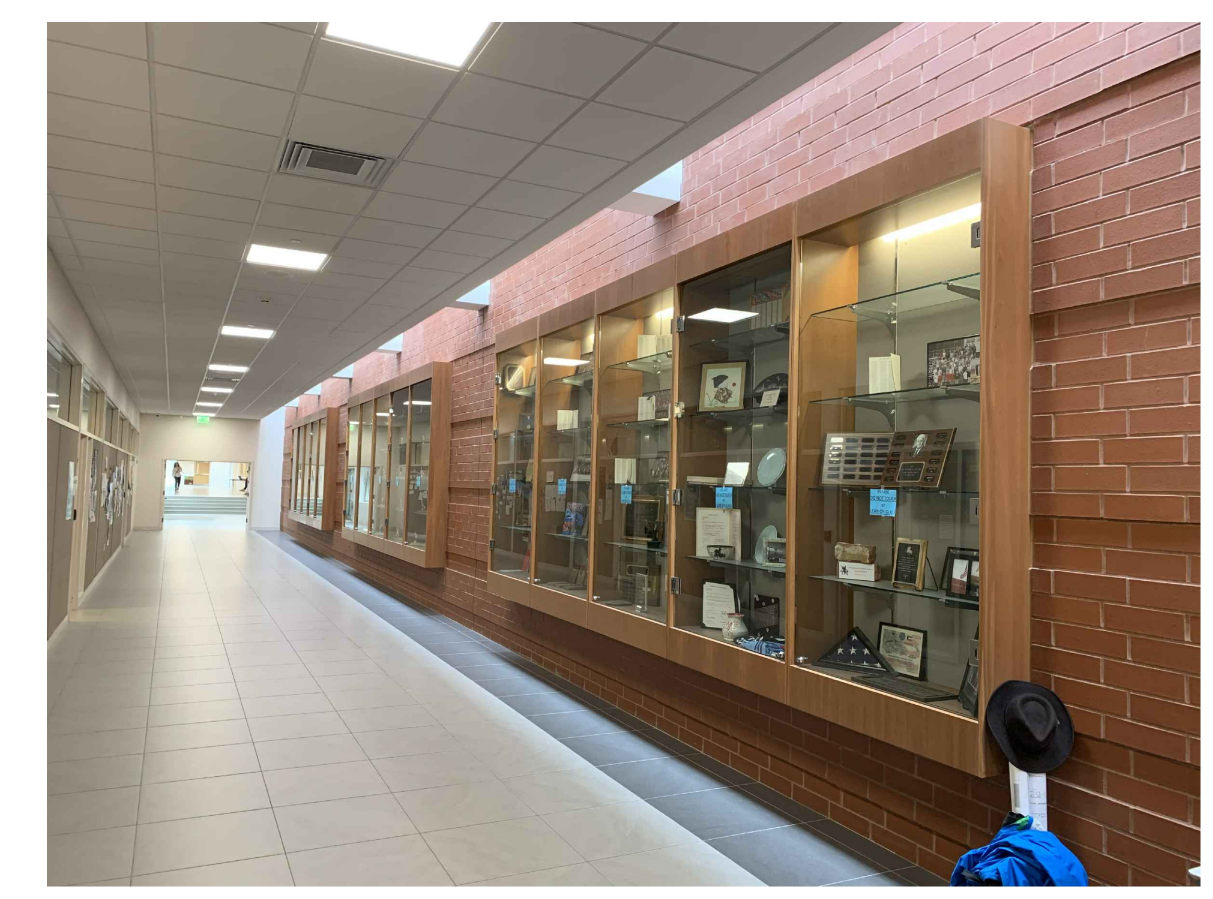
1
DISPLAY CASE #3 PLAN
A-103 1/4" = 1'-0" 0 2' 4' 8"



NOTES: 1. DIMENSIONS REPRESENT EXISTING ROUGH OPENING OF CABINETS.
2. SEE DRAWING A-501 FOR DETAILS.

2
SECTION
A-103 1/4" = 1'-0" 0 2' 4' 8"

3
ELEVATION
A-103 1/4" = 1'-0" 0 2' 4' 8"



4
PHOTOGRAPH
A-103 NTS

REV.	DESCRIPTION	DATE
A	ISSUED FOR CLIENT REVIEW	06/15/21
B	ISSUED FOR BIDDING	09/12/21

TOWN OF LONGMEADOW
LONGMEADOW HIGH SCHOOL
98 GRASSY GUTTER ROAD LONGMEADOW, MA 01106

PROJECT DESCRIPTION
DISPLAY CASE GLASS REPLACEMENT

DRAWING TITLE
DISPLAY CASE #3 PLAN, SECTION AND ELEVATION

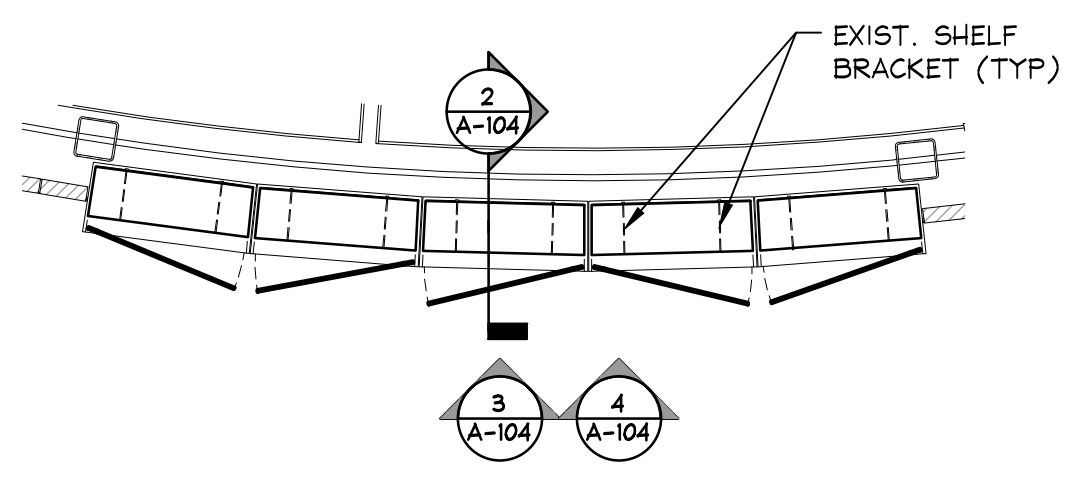
DRAWN BY: MTK
DATE DRAWN: 06/09/21
SCALE: AS NOTED
APV'D BY:

CAD CODE:
TOL-18-009-A-103.dwg
GRAPHIC SCALE:

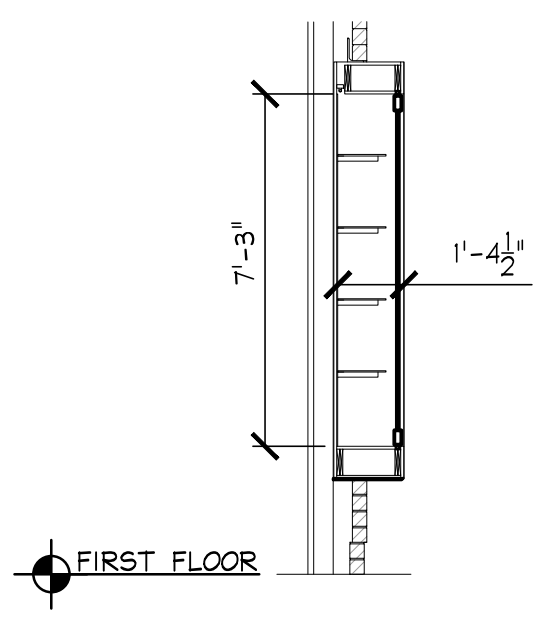
PROJECT NUMBER:
TOL-18-009

DRAWING NUMBER	REV.
A-103	B

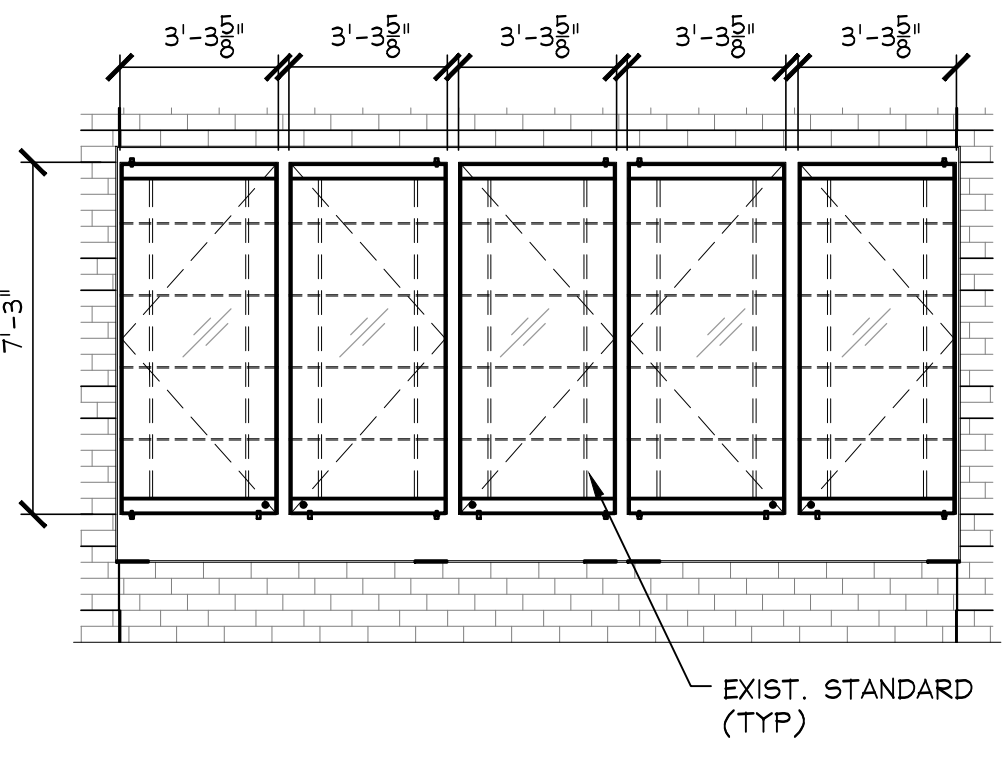
PLOT DATE=01/17/2021 1:40:47 PM USER=MARIANNE KOLODZIEJ FILENAME=S:\CAD\CURRENT\TOL-18-009 LHS display cases\SETUP\DRAWINGS\CAD Files\TOL-18-009-A-104.dwg



1 DISPLAY CASE #4 - PLAN
A-104 1/4" = 1'-0" 0 2' 4' 8'



2 SECTION
A-104 1/4" = 1'-0" 0 2' 4' 8'



NOTES: 1. DIMENSIONS REPRESENT EXISTING ROUGH OPENING OF CABINETS.
2. SEE DRAWING A-502 FOR DETAILS.

3 ELEVATION
A-104 1/4" = 1'-0" 0 2' 4' 8'



4 PHOTOGRAPH
A-104 NTS

Hill
engineers
architects
planners
50 Depot Street
Dalton, MA 01226
(413) 684-0925
44 Spring Street
Adams, MA 01220
(413) 743-0013
www.hillengineers.com

PRELIMINARY
NOT TO BE
USED FOR
CONSTRUCTION

REV.	DESCRIPTION	DRN CK'D	DATE
A	ISSUED FOR CLIENT REVIEW	MTK	06/15/21
B	ISSUED FOR BIDDING	MTK	08/12/21

A COPY OF THE DATA IN THIS DRAWING FILE IS MAINTAINED AT THE OFFICES OF HILL ENGINEERS ARCHITECTS, PLANNERS, INC. THE INTERPRETATION, APPLICATION AND REVISION OF THIS DATA IS THE SOLE RESPONSIBILITY OF THE USER.

TOWN OF LONGMEADOW
LONGMEADOW HIGH SCHOOL
95 GRASSY GUTTER ROAD LONGMEADOW, MA 01106
PROJECT DESCRIPTION
DRAWING TITLE
DISPLAY CASE #4
PLAN, SECTION
AND ELEVATION
DISPLAY CASE GLASS
REPLACEMENT

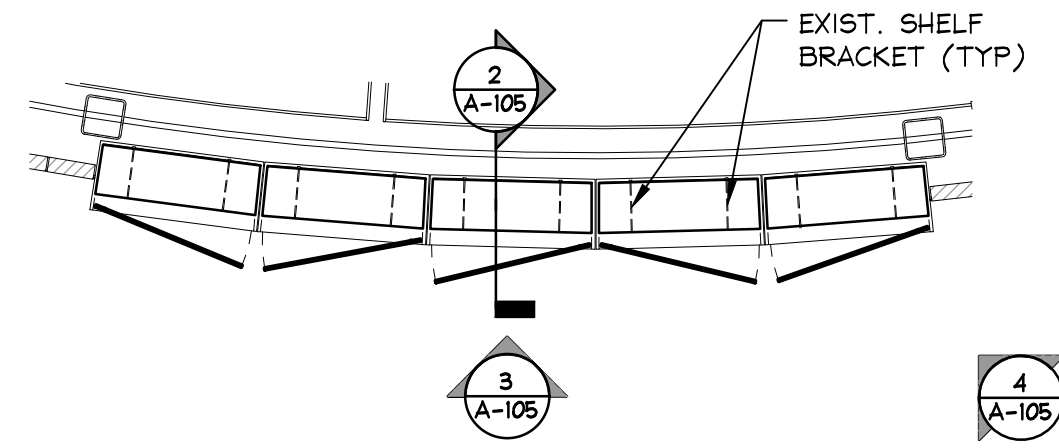
DRAWN BY: MTK
DATE DRAWN: 06/09/21
SCALE: AS NOTED
APV'D BY:

CAD CODE:
TOL-18-009-A-104.dwg
GRAPHIC SCALE:

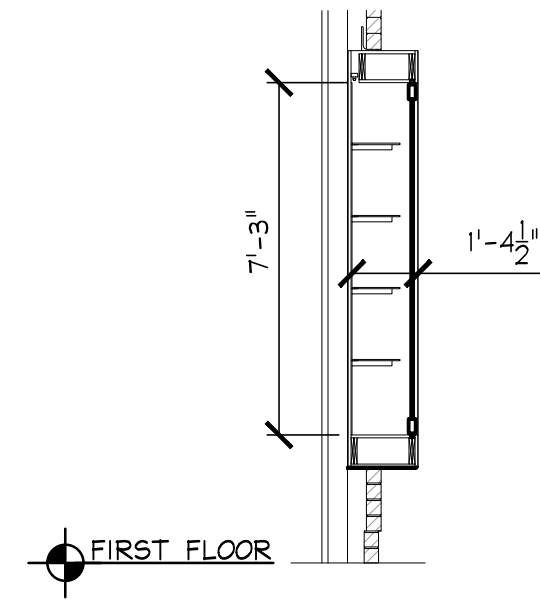
PROJECT NUMBER:
TOL-18-009

DRAWING NUMBER	REV.
A-104	B

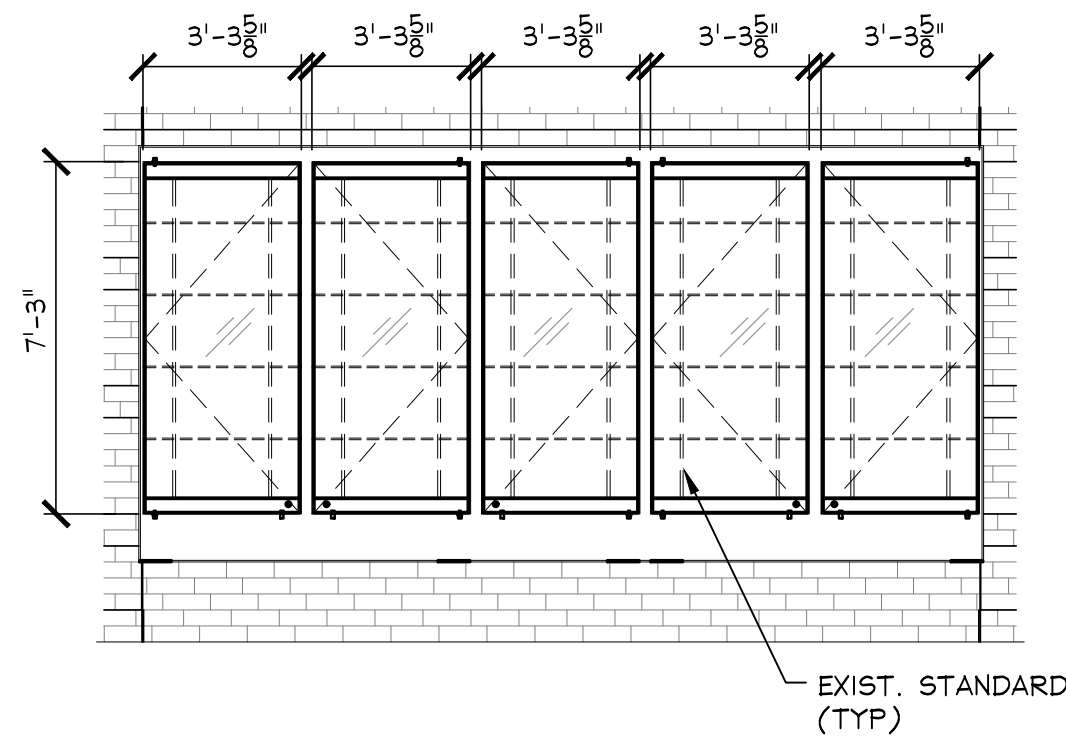
PLOT DATE=08/17/2021 1:41:57 PM USER=MARIANNE KOLODZIEJ FILENAME=S:\CAD\Current\TOL-18-009 LHS display cases\SETUP\DRAWINGS\CAD Files\TOL-18-009-A-105.dwg



1 DISPLAY CASE #5 - PLAN
A-105 1/4" = 1'-0" 0 2' 4' 8'



2 SECTION
A-105 1/4" = 1'-0" 0 2' 4' 8'



NOTES: 1. DIMENSIONS REPRESENT EXISTING ROUGH OPENING OF CABINETS.
2. SEE DRAWING A-502 FOR DETAILS.

3 ELEVATION
A-105 1/4" = 1'-0" 0 2' 4' 8'



4 PHOTOGRAPH
A-105 NTS

Hill
engineers
architects
planners
50 Depot Street
Dalton, MA 01226
(413) 684-0925
44 Spring Street
Adams, MA 01220
(413) 743-0013
www.hillengineers.com

PRELIMINARY

NOT TO BE
USED FOR
CONSTRUCTION

REV.	DESCRIPTION	DRN CK'D:	DATE
A	ISSUED FOR CLIENT REVIEW	MTK	06/15/21
B	ISSUED FOR BIDDING	MTK	08/12/21

A COPY OF THE DATA IN THIS DRAWING FILE IS MAINTAINED AT THE OFFICES OF HILL ENGINEERS ARCHITECTS, PLANNERS, INC. THE INTERPRETATION, APPLICATION AND REVISION OF THIS DATA IS THE SOLE RESPONSIBILITY OF THE USER.

TOWN OF LONGMEADOW
LONGMEADOW HIGH SCHOOL
98 GRASSY GUTTER ROAD LONGMEADOW, MA 01106

PROJECT DESCRIPTION

DISPLAY CASE GLASS REPLACEMENT

DISPLAY CASE #5 PLAN, SECTION AND ELEVATION

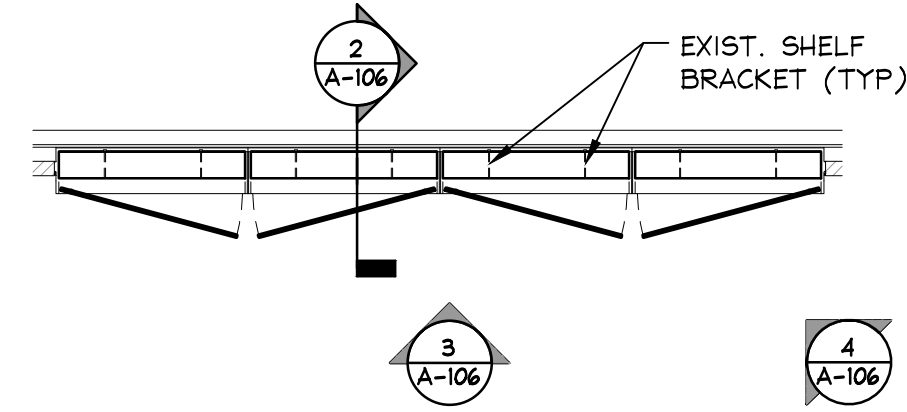
DRAWN BY: MTK
DATE DRAWN: 06/09/21
SCALE: AS NOTED
APV'D BY:

CAD CODE:
TOL-18-009-A-105.dwg
GRAPHIC SCALE:

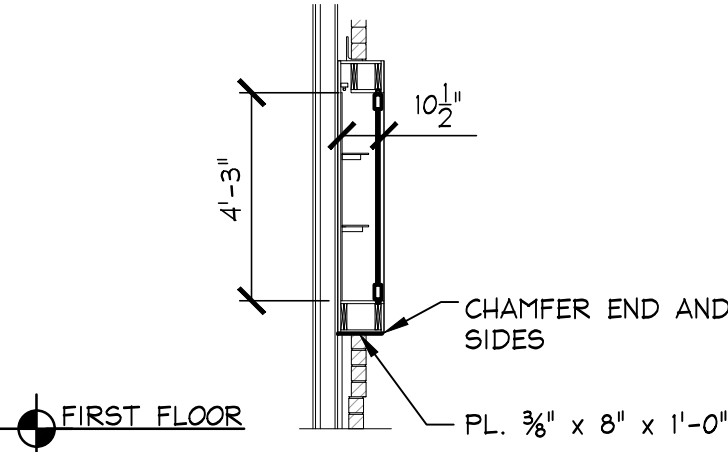
PROJECT NUMBER:
TOL-18-009

DRAWING NUMBER	REV.
A-105	B

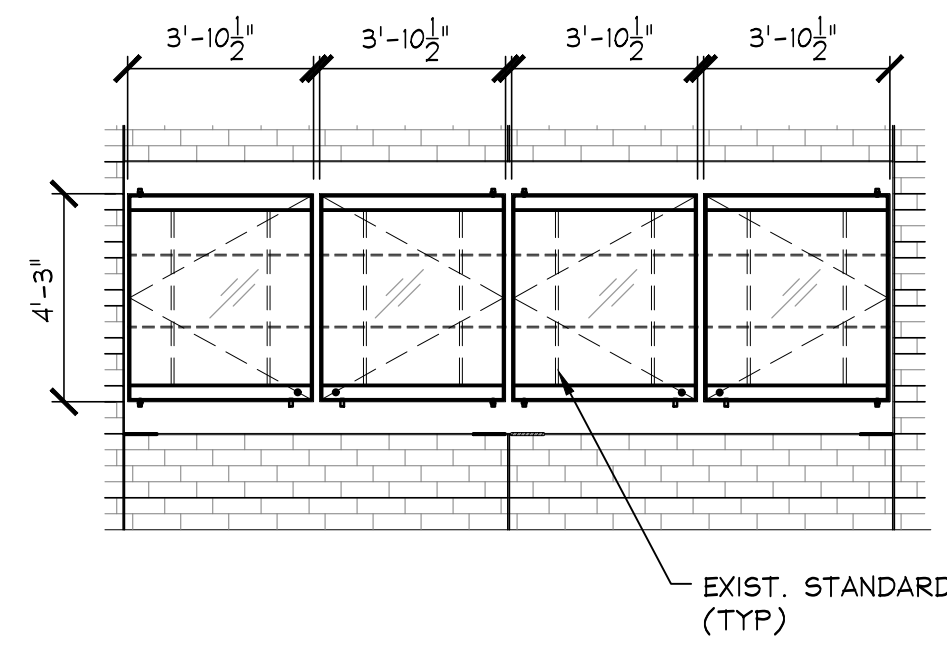
PLOT DATE=08/17/2021 1:48:30 PM USER=MARIANNE KOLODZIEJ FILENAME=S:\CAD\Current\TOL-18-009 LHS display cases\SETUP\DRAWINGS\CAD Files\TOL-18-009-A-106.dwg



1 DISPLAY CASE #6 - PLAN
A-106 1/4" = 1'-0" 0 2' 4' 8'



2 SECTION
A-106 1/4" = 1'-0" 0 2' 4' 8'

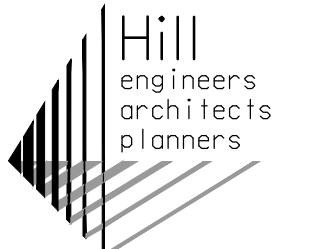


NOTES: 1. DIMENSIONS REPRESENT EXISTING ROUGH OPENING OF CABINETS.
2. SEE DRAWING A-502 FOR DETAILS.

3 ELEVATION
A-106 1/4" = 1'-0" 0 2' 4' 8'



4 PHOTOGRAPH
A-106 NTS



50 Depot Street
Dalton, MA 01226
(413) 684-0925

44 Spring Street
Adams, MA 01220
(413) 743-0013
www.hillengineers.com

PRELIMINARY

NOT TO BE
USED FOR
CONSTRUCTION

REV.	DESCRIPTION	DRN CK'D:	DATE
A	ISSUED FOR CLIENT REVIEW	MTK	06/15/21
B	ISSUED FOR BIDDING	MTK	06/30/21

A COPY OF THE DATA IN THIS DRAWING FILE IS MAINTAINED AT THE OFFICES OF HILL ENGINEERS ARCHITECTS, PLANNERS, INC. THE INTERPRETATION, APPLICATION AND REVISION OF THIS DATA IS THE SOLE RESPONSIBILITY OF THE USER.

TOWN OF LONGMEADOW
LONGMEADOW HIGH SCHOOL
98 GRASSY GUTTER ROAD LONGMEADOW, MA 01106

PROJECT DESCRIPTION

DISPLAY CASE GLASS
REPLACEMENT

DISPLAY CASE #6
PLAN, SECTION
AND ELEVATION

DRAWN BY: MTK
DATE DRAWN: 06/09/21
SCALE: AS NOTED
APV'D BY:

CAD CODE:
TOL-18-009-A-106.dwg
GRAPHIC SCALE:

PROJECT NUMBER:
TOL-18-009

DRAWING NUMBER	REV.
A-106	B

PLOT DATE=08/17/2021 3:43:24 PM USER=MARIANNE KOLODZIEJ FILENAME=S:\CAD\Current\TOL-18-009 LHS display cases\SETUP\DRAWINGS\CAD Files\TOL-18-009-A-501.dwg

PRELIMINARY

NOT TO BE
USED FOR
CONSTRUCTION

REV.	DESCRIPTION	DATE
A	ISSUED FOR CLIENT REVIEW	06/15/21
B	ISSUED FOR BIDDING	08/12/21

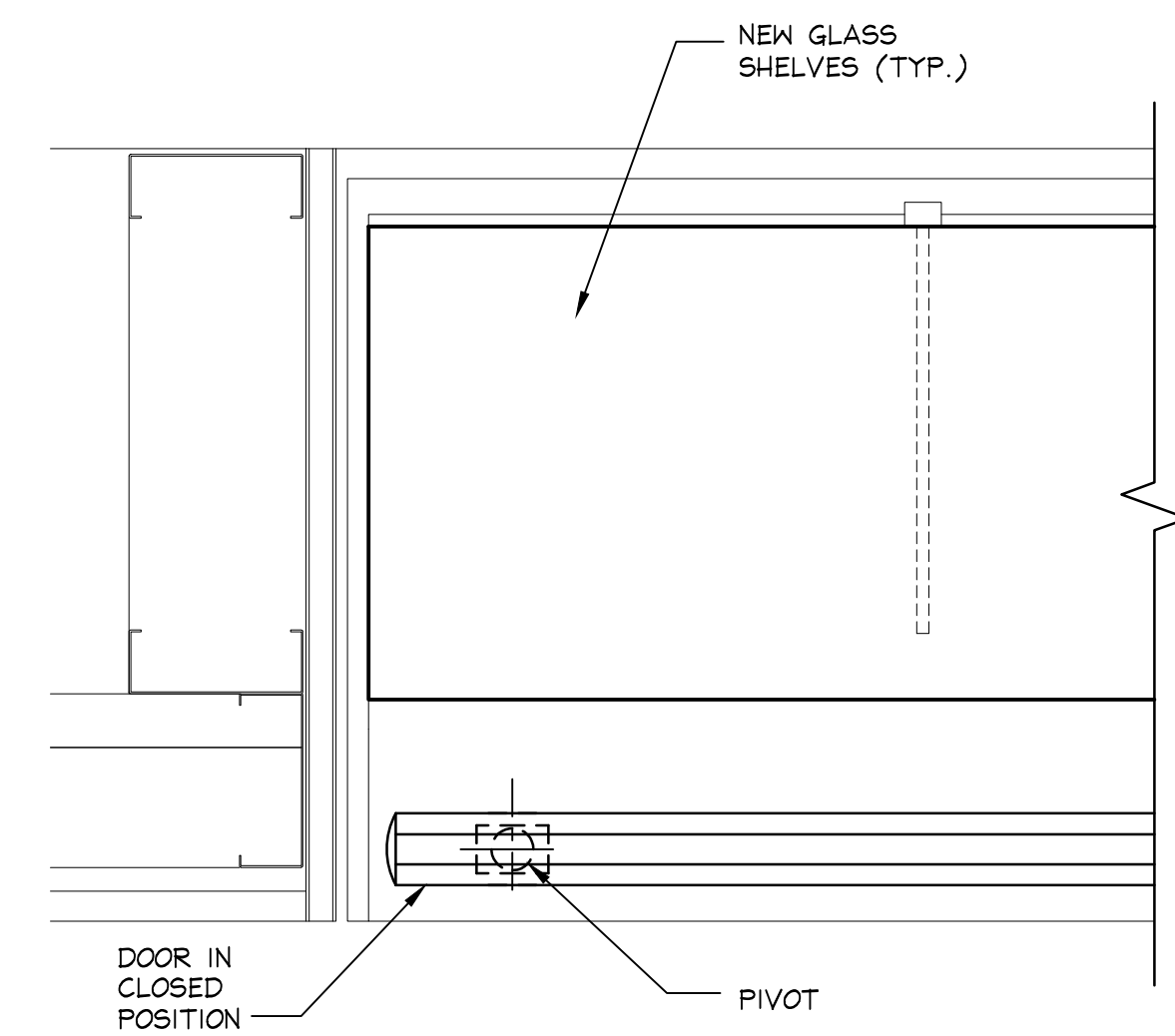
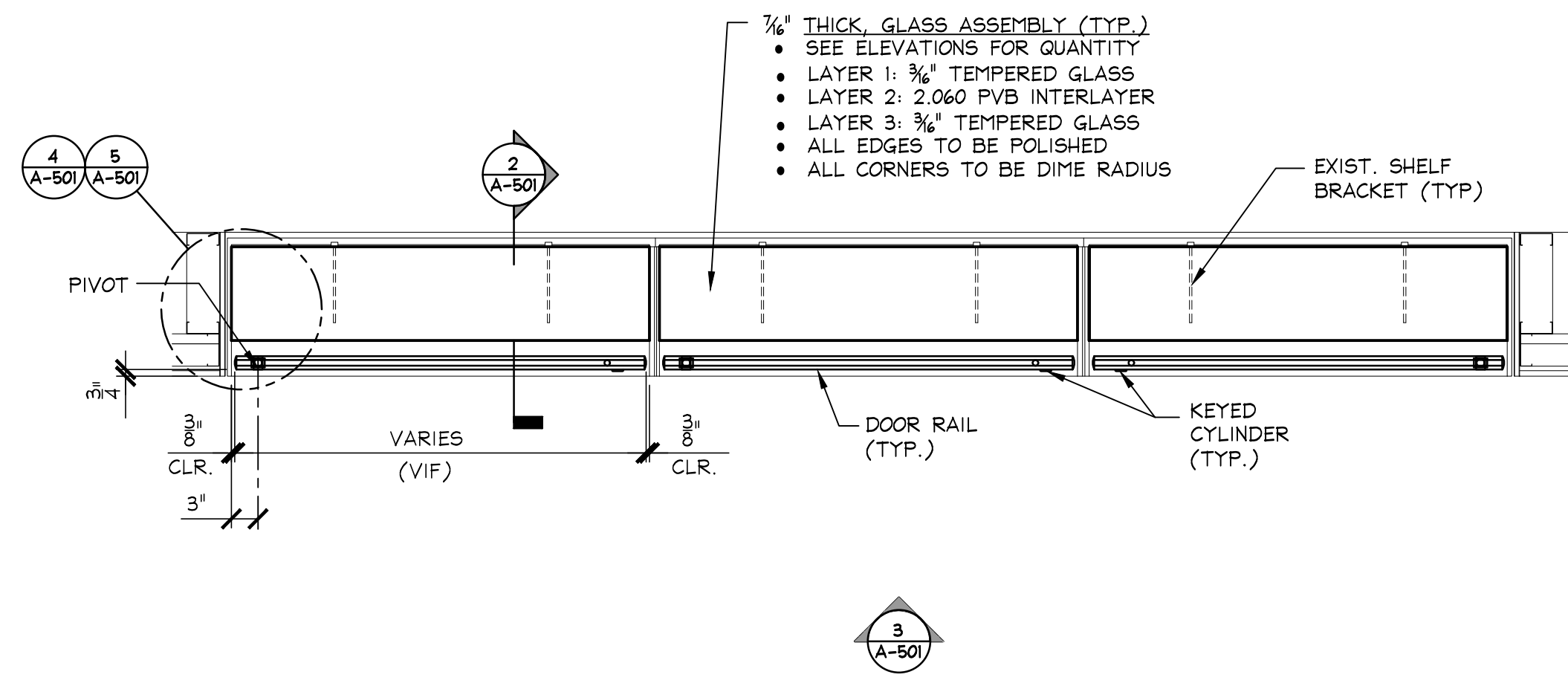
TOWN OF LONGMEADOW
LONGMEADOW HIGH SCHOOL
98 GRASSY GUTTER ROAD LONGMEADOW, MA 01106
PROJECT DESCRIPTION
DISPLAY CASE GLASS REPLACEMENT
DRAWING TITLE
DISPLAY CASE GLASS DOOR DETAILS

DRAWN BY: MTK
DATE DRAWN: 06/09/21
SCALE: AS NOTED
APV'D BY:

CAD CODE:
TOL-18-009-A-501.dwg
GRAPHIC SCALE:

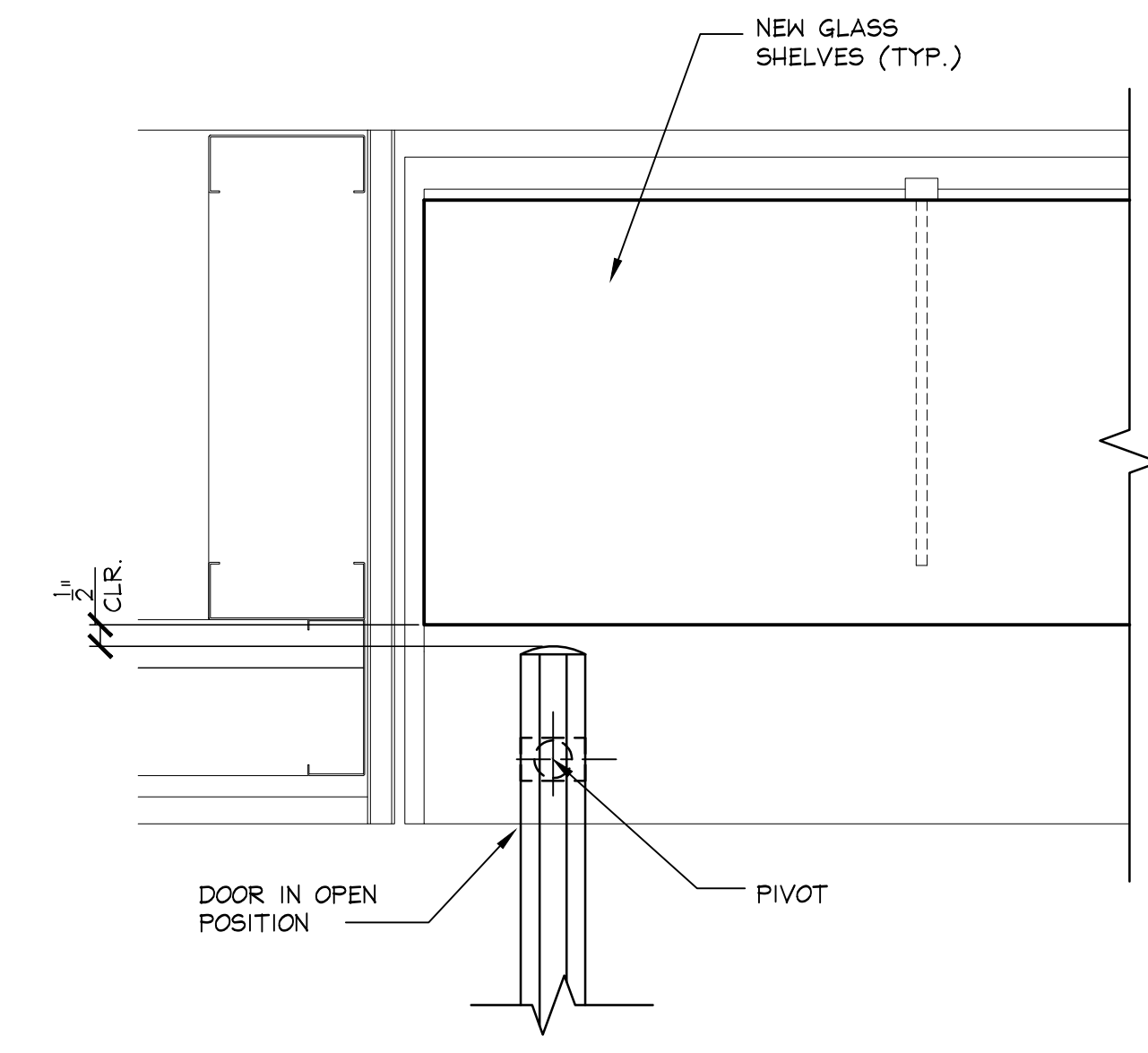
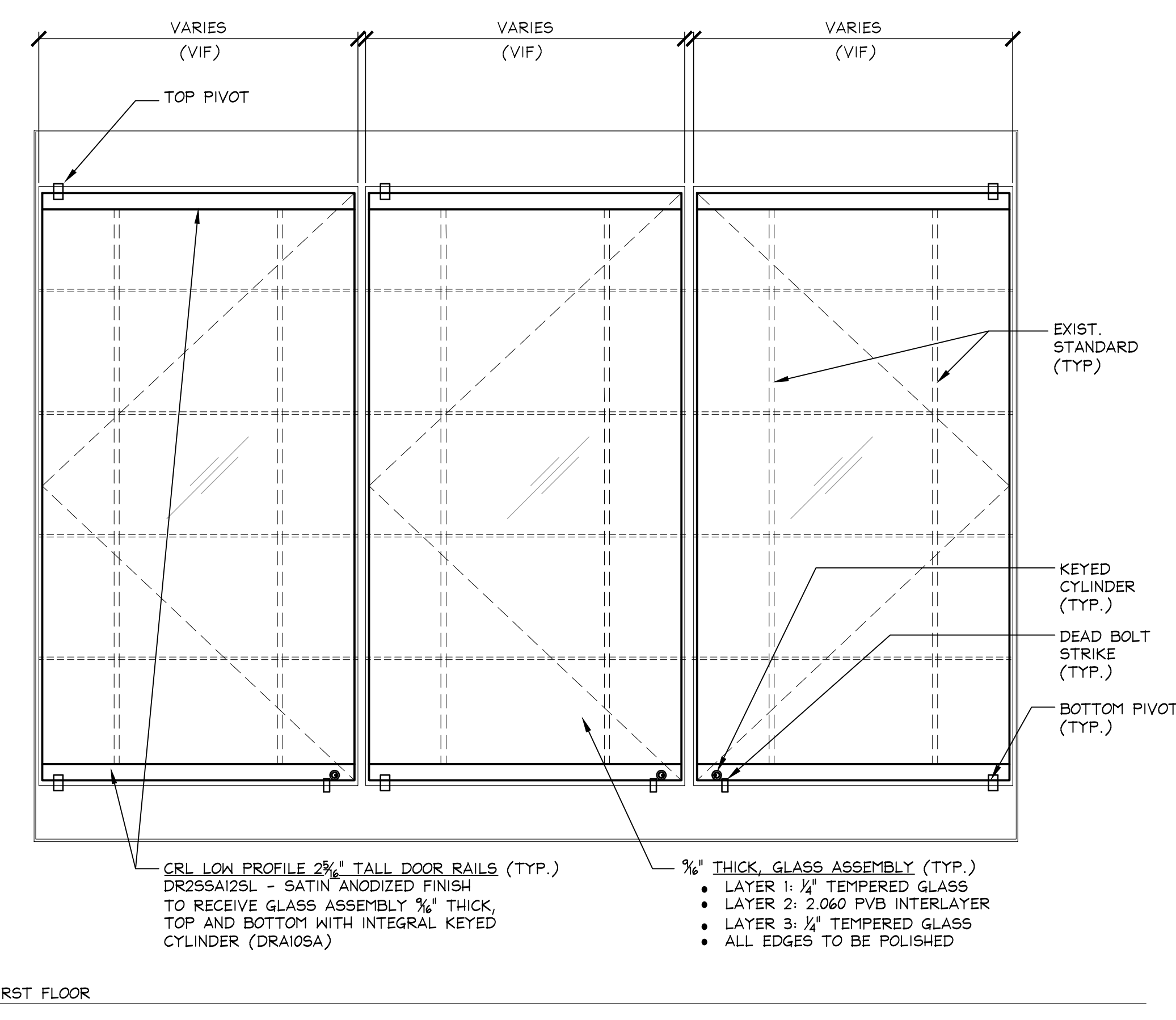
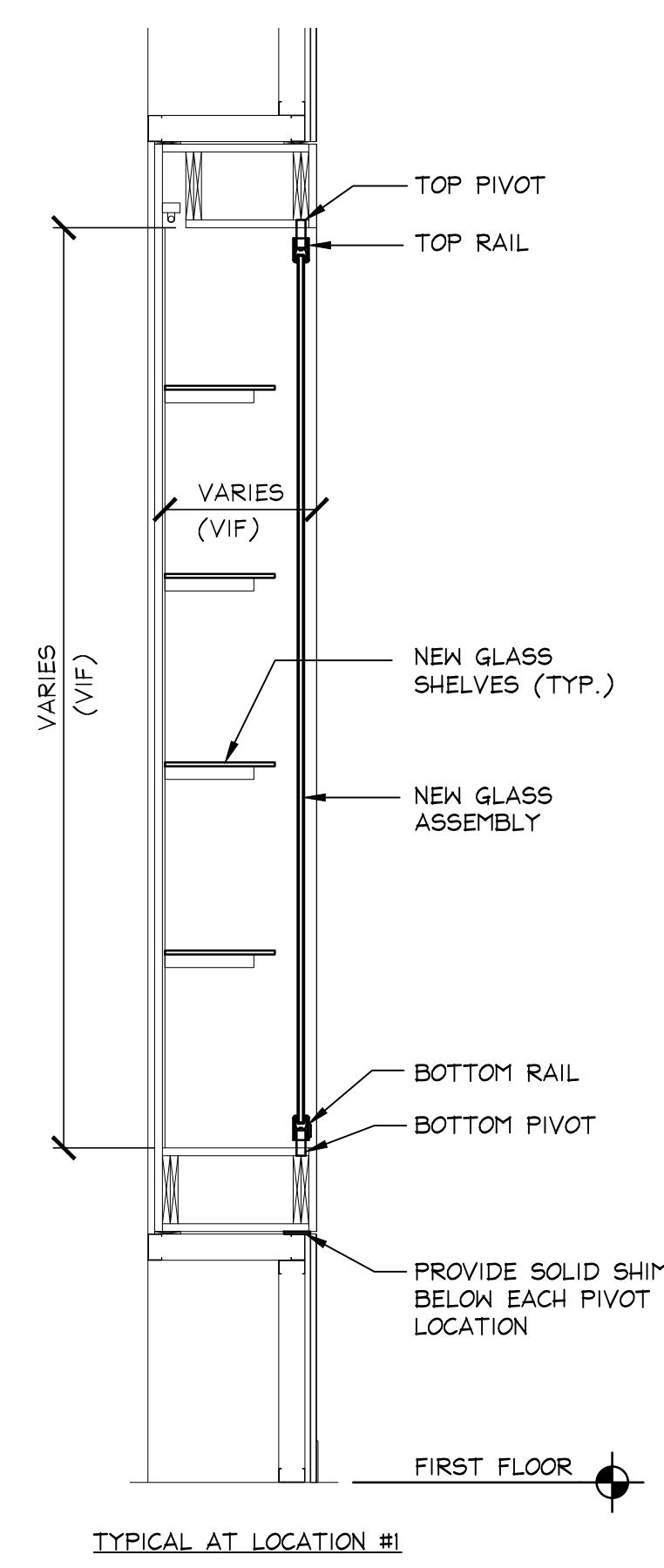
PROJECT NUMBER:
TOL-18-009

DRAWING NUMBER	REV.
A-501	B



1 DISPLAY CASE PLAN
A-501 3/4" = 1'-0" 0 1' 2' 3'

4 ENLARGED PLAN - DOOR IN CLOSED POSITION
A-501 3/4" = 1'-0" 0 3' 6' 9' 12'



2 SECTION
A-501 3/4" = 1'-0" 0 1' 2' 3'

3 ELEVATION
A-501 3/4" = 1'-0" 0 1' 2' 3'

5 ENLARGED PLAN - DOOR IN OPEN POSITION
A-501 3/4" = 1'-0" 0 3' 6' 9' 12'

NOTE: EXISTING CONSTRUCTION OBTAINED FROM ORIGINAL BUILDING DRAWINGS.

NOTES: 1. UPON REMOVAL OF EXISTING DOORS AND HARDWARE PATCH ALL REMAINING HOLES IN THE WOODEN DISPLAY CASE BOXES.
2. THE REPAIRS TO THE DISPLAY CASE BOXES SHALL BE PERFORMED BY EXPERIENCED FURNITURE REPAIR PERSON TO MATCH COLOR/FINISH OF THE EXISTING BOXES.

PRELIMINARY

NOT TO BE
USED FOR
CONSTRUCTION

REV.	DESCRIPTION	DATE
A	ISSUED FOR BIDDING	08/12/21
MTK		

TOWN OF LONGMEADOW
LONGMEADOW HIGH SCHOOL
98 GRASSY GUTTER ROAD LONGMEADOW, MA 01106

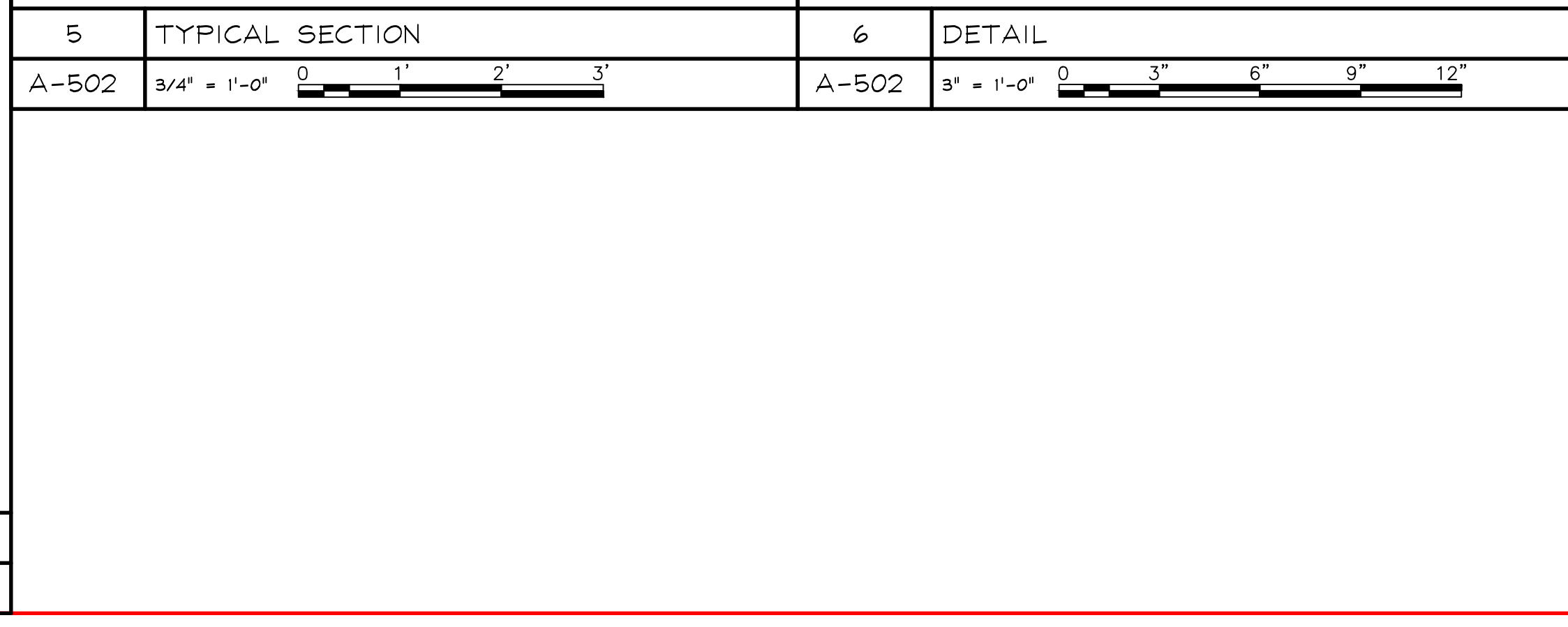
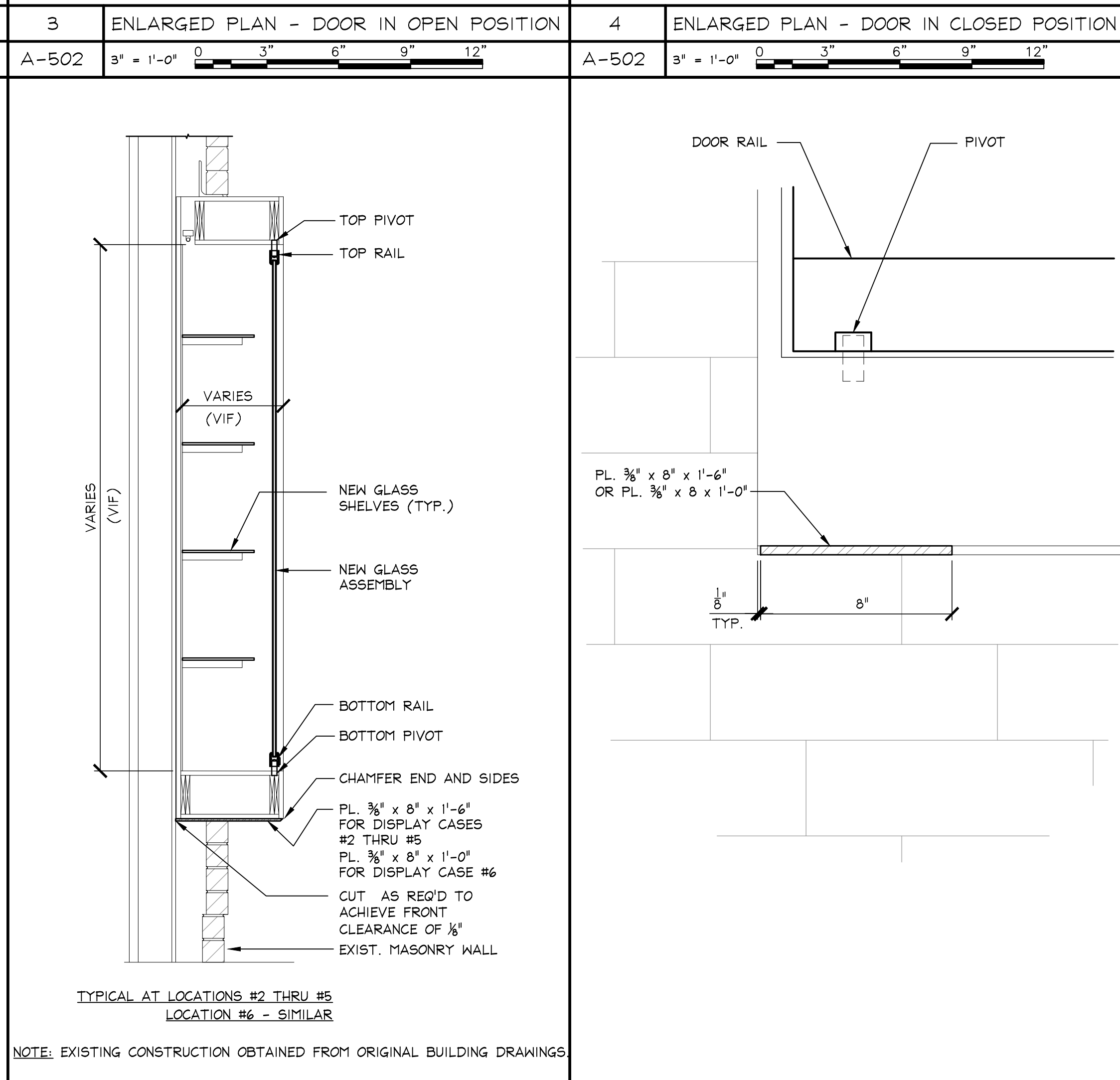
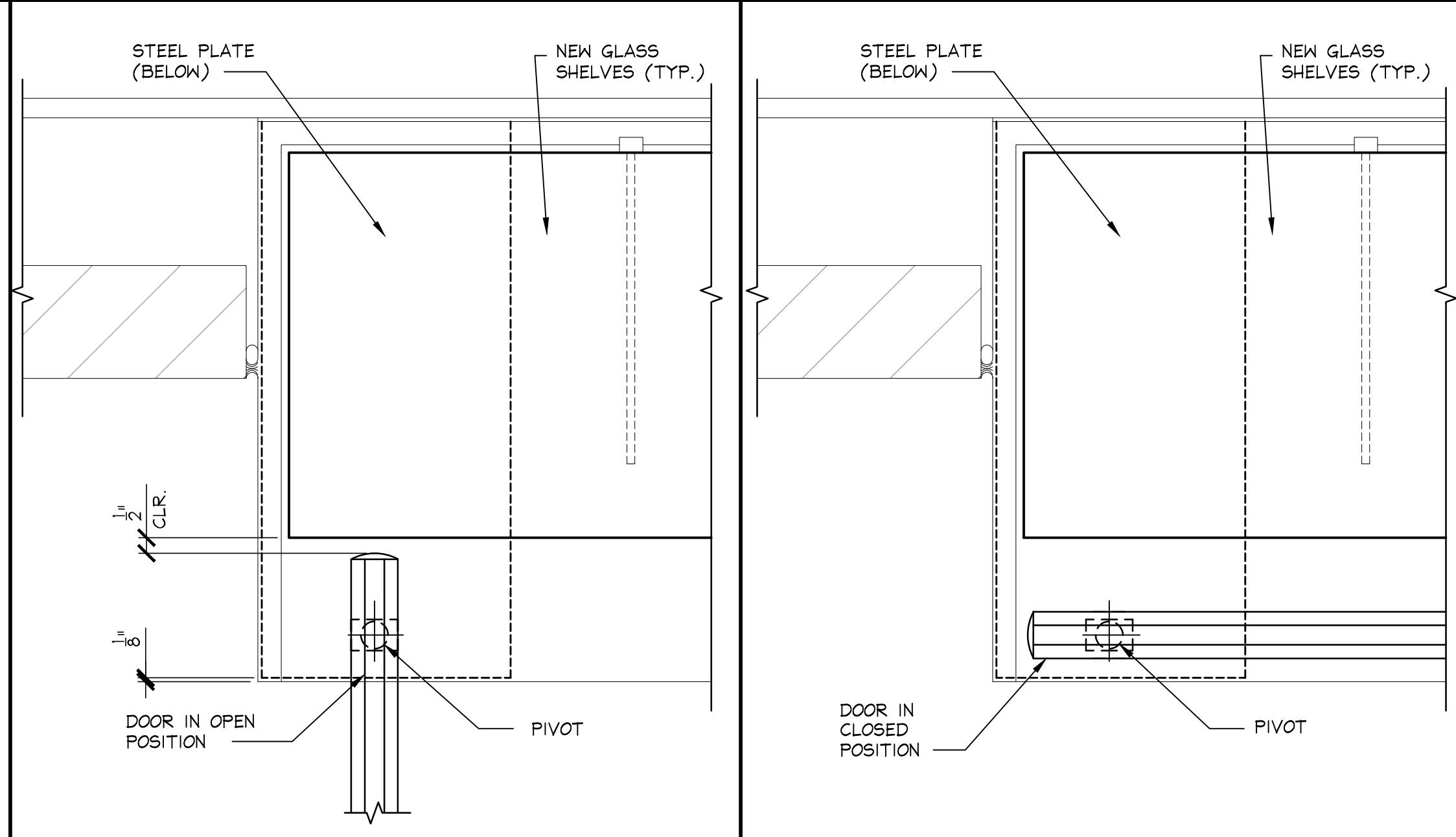
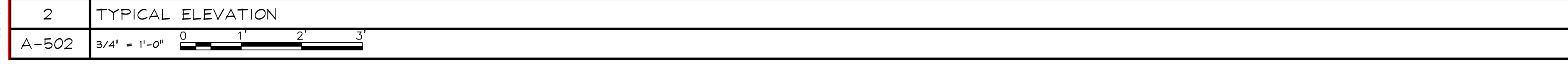
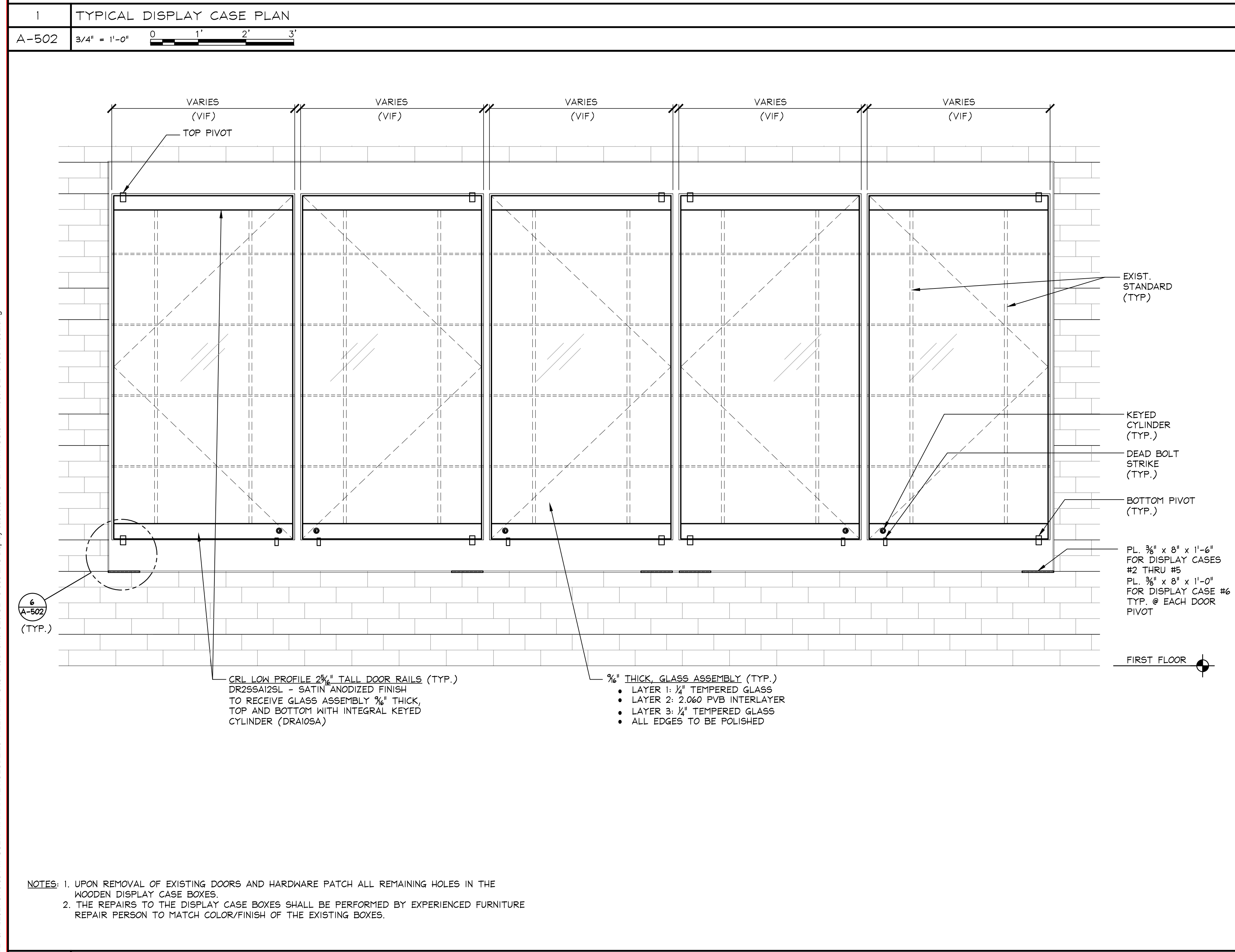
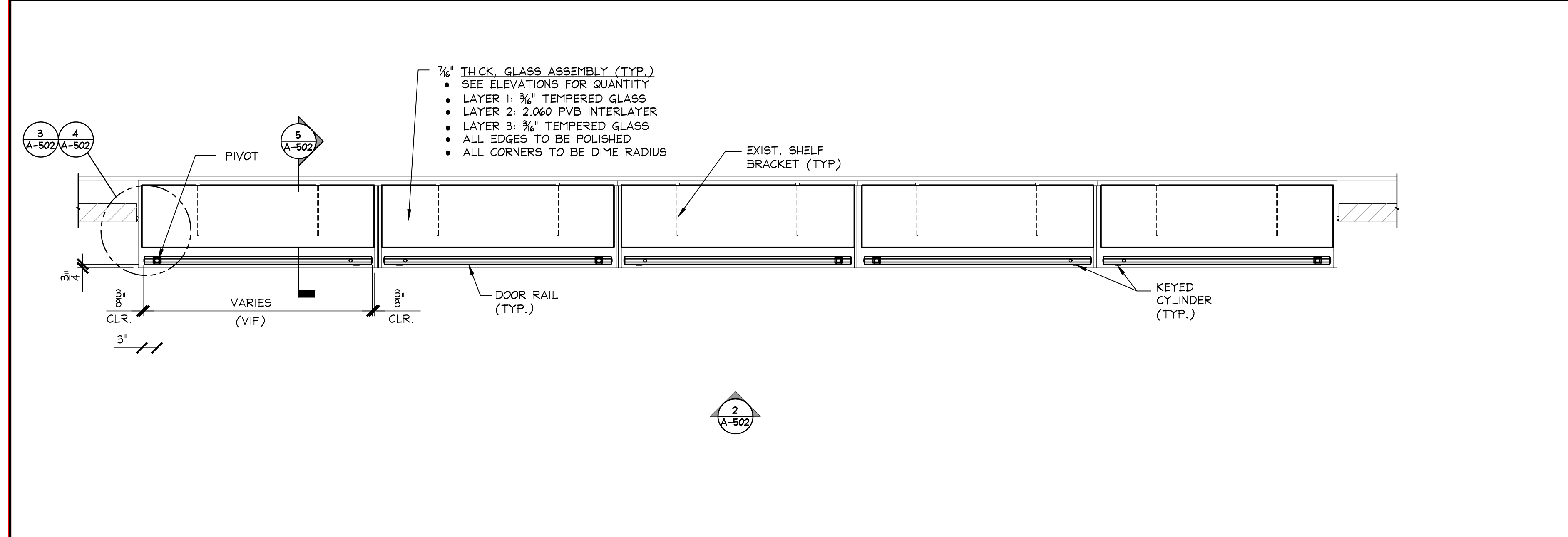
PROJECT DESCRIPTION
DRAWING TITLE
DISPLAY CASE GLASS DOOR DETAILS

PROJECT NUMBER:
TOL-18-009

DRAWN BY: **MTK**
DATE DRAWN: **06/09/21**
SCALE: **AS NOTED**
APV'D BY:

CAD CODE:
TOL-18-009-A-502.dwg

DRAWING NUMBER	REV.
A-502	A



PLOT DATE=01/12/2021 3:45:35 PM USER=MARIANNE KOLODZIEJ FILENAME=S:\CAD\Current\TOL-18-009_LHS display cases\SETUP\DRAWINGS\CAD Files\TOL-18-009-A-502.dwg